

15 | RC F



RC F

It's not just the next expression of Lexus performance. It's an unprecedented feat of performance engineering that was forged from the asphalt up. Developed to satisfy the most demanding driving enthusiasts, the RC F has a 5.0-liter V8 delivering 467 horsepower¹; an eight-speed Sport Direct-Shift transmission that can, in Manual mode, lock up the torque converter in gears two through eight for optimal responsiveness; an available Lexus-first Torque Vectoring Differential; a speed-activated rear wing; and intuitive technology like an available Remote Touchpad.²



INTRODUCING
THE FIRST-EVER 2015 RC F



HIGH-BACK SPORT SEATS

Feel confidence through every curve. Embracing you from hip to shoulder, these exclusive sport seats feature a unique foam construction that's designed to disperse body pressure, increasing support and helping to keep you firmly planted through turns. And, while the embossed F on the headrests is a striking design element, the stitching patterns on the available leather-trimmed seats were created to grab more than just your attention. Inspired by specially crafted athletic sportswear, the pattern's shape and position were carefully calculated to provide greater muscular support and grip in high-G situations.

PURE EXHILARATION FROM THE ASPHALT UP.



NATURALLY ASPIRATED 5.0-LITER V8

The potent 467 horsepower¹ delivered by the 5.0-liter V8 is all the more impressive when you consider that it's also engineered to deliver efficiency. Among its innovative components, lightweight titanium valves and high-strength, forged connecting rods. And, making our most powerful V8 also our most stirring, it emits a throaty, specially tuned engine sound throughout its impressive 7,300-rpm range.



PERFORMANCE COCKPIT

The RC F was designed to forge a connection with the driver like never before. Low-set sport seats help place your hip point as close as possible to the vehicle's center of gravity for a more dynamic driving experience. For greater control, a uniquely shaped, thick-grip steering wheel feels as if it were molded to your hands. Large paddle shifters are positioned for faster gear changes. And the distinctive pattern on the racing pedals? The size and position of the rubber pads are specifically designed to help grip your foot, lap after exhilarating lap.



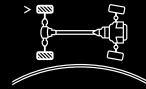
TRACK-PROVEN CHASSIS

At its core, the RC F is engineered to perform. Its highly rigid chassis is a product of specialized manufacturing techniques including high-strength adhesive bonding, laser brazing, and laser-screw and multi-spot welding. And, to help ensure you get the most out of every G, reinforced rockers and stiff front and rear bracing combine with a wide wheel and tire assembly for optimal grip while cornering.



SPEED-ACTIVATED REAR WING

The speed-activated rear wing on the RC F is as aesthetically arresting as it is functional. Available in carbon fiber,* this wing responds to high-speed demands for greater traction by increasing downforce to help keep you firmly planted on the road. And taking the sleek appeal of the coupe even further, the rear wing seamlessly integrates into the trunk lid when not in use.



TORQUE VECTORING DIFFERENTIAL

Putting added control into the hands of the driver, the RC F features an available Lexus-first Torque Vectoring Differential. With three unique modes—Slalom, Track and Standard—this system can direct power to the outside rear wheel when cornering, putting power to the ground more effectively while also helping to power the vehicle into and out of the sharpest of turns.



INNOVATIVE TECHNOLOGY

Equal parts functionality and form, the available Remote Touchpad² is an intuitive way to stay in command of your navigation-equipped RC F. Featuring pulsation feedback and intuitive operation via pinch, swipe and flick gestures just like your smartphone, it can be used to order movie tickets, make dinner reservations and more via the subscription-free Lexus Enform App Suite.⁴ Or, access the available 17-speaker Mark Levinson[®] Premium Surround Sound System⁵ and enjoy three-dimensional sound that rivals that of most concert halls.



STOPPING POWER

Reining back such a high-performance machine lap after lap requires serious stopping power. Get the control you crave, thanks to the huge 14.9-inch front brake rotors clamped by massive six-piston aluminum monoblock Brembo[®] calipers.³ Featuring a fast-cooling, slotted rotor design and high-friction pads³ for reduced brake fade, the RC F makes stopping almost as exciting as going. Almost.



CUSTOMIZABLE GAUGE DISPLAY

Keeping up with the rapid revs is no small feat. That's why a digital tachometer was implemented in this race-ready gauge cluster. The easy-to-read, full-color LCD display allows you to quickly organize the data you need to achieve optimum control. Readouts include performance data such as drive mode, gear position, G-force, lap times and customizable displays. Additionally, this in-dash display offers multimedia linkage so that you can view incoming calls, current song titles and more.



THE LEXUS RC F IS FASTER THAN THE BMW M4 AND AUDI RS 5 ON A CLOSED TRACK.*



PERFORMANCE PACKAGE

Once you experience the added exhilaration of the RC F Performance Package,* there's no going back. It features track-ready upgrades like a Torque Vectoring Differential and exclusive carbon fiber components fabricated at the same workshop used to develop those on the world-renowned LFA supercar. Offering distinctive style and the same structural rigidity as the standard steel components, the carbon fiber active rear wing and roof both help to reduce weight, lowering the RC F's center of gravity for more responsive handling.



A. Available 19-inch split-10-spoke forged alloy wheels⁶ and brake-cooling aerodynamic wheel vents **B.** Perforated leather-trimmed steering wheel and shift knob with contrast stitching **C.** Available Remote Touchpad² **D.** High-back bolstered sport seats with embossed F-logo emblem **E.** Available Premium Triple-Beam LED headlamps **F.** Dynamic tachometer with customizable digital display **G.** 19-inch split-five-spoke forged alloy wheels⁶

THE RC F GT3

Representing the introduction of Lexus into the international GT3 race circuit, this FIA-certified concept made its world premiere at the 2014 Geneva Motor Show. Poised to be unleashed in the world's most legendary races in 2015, it weighs a mere 2,756 pounds and boasts a modified version of the RC F's powerful V8 engine, producing more than 540 horsepower.¹ Of course, the GT3 circuit isn't the only motorsport where the RC F is leaving an impression. Transforming the RC F into a Super GT force, Lexus has already entered the RC F GT500 in the prestigious Okayama GT 300km in Japan. The result? Not only did it secure pole position, breaking a track record along the way, it won the race.



KEY STANDARD FEATURES

SmartAccess^{7,8} with push-button Start/Stop // LFA-inspired instrumentation including G-meter and lap timer // LED headlamps and daytime running lights // Frameless electrochromic (auto-dimming) rearview mirror with HomeLink[®] universal transceiver // Rear-seat armrest with trunk pass-through // NuLuxe interior trim // 10-way power driver and 8-way front passenger sport seats // Drive Mode Select // Paddle shifters // Speed-activated rear wing // Lexus Display Audio with backup camera⁹ // 10-speaker audio system // Bluetooth[®] phone¹⁰ and audio¹¹ connectivity // Eight airbags¹² // Multi-information display // Siri[®] Eyes Free mode¹³ // Traffic and weather updates¹⁴ via HD Radio^{TM14} // Lexus Enform Remote¹⁵ with one-year trial subscription // Lexus Enform Safety Connect.¹⁶ Subscription required. One-year subscription included

INDIVIDUAL OPTIONS

Premium Triple-Beam LED headlamps // Leather interior trim // Intuitive Parking Assist¹⁷ // Pre-Collision System¹⁸ with Dynamic Radar Cruise Control¹⁹ // Power tilt-and-slide moonroof with sliding sunshade // Torque Vectoring Differential (limited time)

PACKAGES

PREMIUM PACKAGE

Dark Carbon Fiber interior trim // Heated and ventilated front seats // Lexus Memory System for driver's seat, outside mirrors and steering wheel // Blind Spot Monitor²⁰ with Rear Cross-Traffic Alert²¹ // Electrochromic (auto-dimming) outside mirrors with auto tilt-down in reverse // Premium Triple-Beam LED headlamps // Intuitive Parking Assist¹⁷ // Rain-sensing wipers

PERFORMANCE PACKAGE (Available Winter 2015)

(Includes Premium Package) + Carbon fiber roof // Carbon fiber speed-activated rear wing // Torque Vectoring Differential (TVD)

NAVIGATION PACKAGE

Navigation System with color multimedia display // Remote Touchpad² // Voice command // Enhanced Bluetooth technology¹⁰ // Lexus Enform App Suite⁴ with Bing!TM iHeartRadio, OpenTable,[®] MovieTickets.com, Pandora,^{®22} Yelp,[®] Slacker and Facebook Places // Lexus Enform Destinations with Destination Assist and eDestination. Subscription required. One-year trial subscription included

MARK LEVINSON AUDIO PACKAGE

(Includes Navigation Package) + Mark Levinson Premium Surround Sound Audio System⁵ // 17 GreenEdgeTM high-efficiency speakers // 835-watt Class-D amplifier // Machined-aluminum control knobs // Clari-FiTM audio processing

ALL-WEATHER PACKAGE

Windshield-wiper deicer // Headlamp washers // Heated steering wheel

WHEELS



19-in split-five-spoke forged alloy wheels⁶
Standard



19-in split-10-spoke forged alloy wheels⁶
Available



19-in hand-polished 20-spoke forged alloy wheels⁶
Available

KEY SPECS

5.0L V8

ENGINE

467^{HP1}

HORSEPOWER

389^{LB-FT1}

TORQUE

8-SPEED

EIGHT-SPEED SPORT DIRECT-SHIFT SEQUENTIAL TRANSMISSION WITH PADDLE SHIFTERS

RWD

STANDARD

DRIVETRAIN

DOUBLE-WISHBONE

FRONT

SUSPENSION WITH FORGED ALUMINUM COMPONENTS

MULTILINK

REAR

16 / 25 / 19²³ EST MPG

FUEL ECONOMY, EPA-ESTIMATED RATINGS (CITY/HIGHWAY/COMBINED)

0-60 IN²⁴ 4.4^S 168 MPH^{1,24} TOP SPEED

PERFORMANCE

BREMBO³

BRAKES WITH SIX-PISTON FRONT CALIPERS

3,958^{LB}

CURB WEIGHT

54.6%^{FRONT} 45.4%^{REAR}

WEIGHT DISTRIBUTION



WIDTH 81.5 IN

HEIGHT 54.7 IN



OVERALL LENGTH 185.2 IN

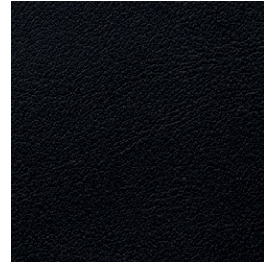
WHEELBASE 107.5 IN

RCF shown in Ultrasonic Blue Mica 2.0 // Options shown.

LEXUS ENFORM What is Lexus Enform? Lexus Enform is Lexus-branded connected services and currently consists of the following products: Lexus Enform Safety Connect, Lexus Enform Destinations, Lexus Enform Remote and Lexus Enform App Suite. To learn more visit lexus.com/enform.

For a complete list of features and to view configurations available in your area, please visit lexus.com/RCFbuild.

INTERIOR



BLACK
LEATHER or NULUXE

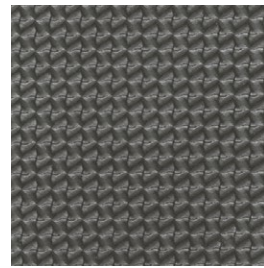


STRATUS GRAY
LEATHER

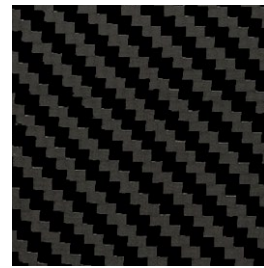


CIRCUIT RED
LEATHER

TRIM

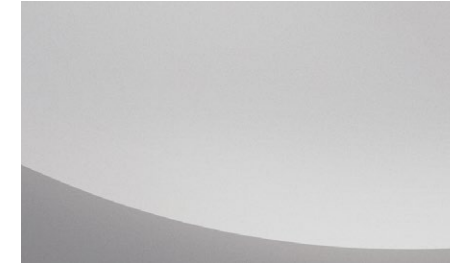


SILVER
PERFORMANCE



BLACK CARBON
FIBER

EXTERIOR



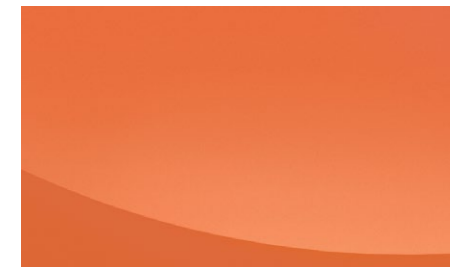
LIQUID PLATINUM



NEBULA GRAY PEARL



OBSIDIAN



MOLTEN PEARL



ULTRA WHITE



INFRARED*



ULTRASONIC BLUE MICA 2.0*

| LEATHER or NULUXE INTERIOR | EXTERIOR | Liquid Platinum | Nebula Gray Pearl | Obsidian | Molten Pearl | Ultra White | Infrared* | Ultrasonic Blue Mica 2.0* |
|---|----------|-----------------|-------------------|----------|--------------|-------------|-----------|---------------------------|
| Black NuLuxe with Silver Performance Trim | | ■ | ■ | ■ | | | ■ | |
| Black NuLuxe with Black Carbon Fiber Trim | | ● | ● | ● | ● | ● | ● | ● |
| Black Leather with Black Carbon Fiber Trim | | ● | ● | ● | ● | ● | ● | ● |
| Stratus Gray Leather with Black Carbon Fiber Trim | | ● | ● | ● | ● | ● | ● | ● |
| Circuit Red Leather with Black Carbon Fiber Trim | | ● | ● | ● | ● | ● | | ● |

■ Standard

● Available

* Additional charge

SERVICES AS INNOVATIVE AS THE RCF ITSELF.

THE LEXUS DELIVERY AND TECHNOLOGY SPECIALISTS. To assist you in getting the most out of your RCF, the Lexus Delivery Specialist will conduct a personalized delivery focused on every feature, setting and function you desire. To answer questions that arise after delivery, the Lexus Technology Specialist can offer expert guidance in person or without you ever leaving the driveway, via camera-enabled iPad®²⁵ apps like FaceTime®.²⁶ Learn more about our Lexus Delivery and Technology Specialist services at lexus.com/specialists.

WARRANTY Four-year/50,000-mile Lexus Limited Warranty. Six-year/70,000-mile Powertrain Warranty. Six-year/unlimited-mileage Corrosion Perforation Warranty. All warranties with zero deductible. See the *RCF Warranty and Services Guide* at your Lexus dealer for details. **DISCLOSURES** **1.** Ratings achieved using the required premium unleaded gasoline with an octane rating of 91 or higher. If premium fuel is not used, performance will decrease. **2.** Be sure to obey traffic regulations and maintain awareness of road and traffic conditions. **3.** High-friction brakes require periodic inspection and measurement as outlined in the *Warranty and Services Guide*. The pads and rotors are expected to experience greater wear than conventional brakes. Pad life may be less than 20,000 miles, and brake rotor life may be less than 50,000 miles depending on driving conditions. F SPORT models may feature Brembo® brakes. It is an inherent characteristic of materials and design of brake pads used in this high-performance brake system that brake noise/squeal may result. **4.** Apps/services vary by phone/carrier; functionality depends on many factors. Select apps use large amounts of data; you are responsible for charges. Apps & services subject to change. See lexus.com/enform for details. **5.** Mark Levinson® is a registered trademark of Harman International Industries, Inc. **6.** 19-in performance tires are expected to experience greater tire wear than conventional tires. Tire life may be substantially less than 15,000 miles, depending upon driving conditions. **7.** The SmartAccess system may interfere with some pacemakers or cardiac defibrillators. If you have one of these medical devices, please talk to your doctor to see if you should deactivate this system. **8.** The engine immobilizer is a state-of-the-art anti-theft system. When you insert your key into the ignition switch or bring a SmartAccess fob into the vehicle, the key transmits an electronic code to the vehicle. The engine will only start if the code in the transponder chip inside the key/fob matches the code in the vehicle's immobilizer. Because the transponder chip is embedded in the key/fob, it can be costly to replace. If you lose a key or fob, your Lexus dealer can help. Alternatively, you can find a qualified independent locksmith to perform high-security key services by consulting your local *Yellow Pages* or by contacting www.aloa.org. **9.** The backup camera does not provide a comprehensive view of the rear area of the vehicle. You should also look around outside your vehicle and use your mirrors to confirm rearward clearance. Cold weather may limit effectiveness and view may become cloudy. **10.** The Bluetooth® word mark and logos are registered trademarks owned by Bluetooth SIG, Inc. and any use of such marks by Lexus is under license. A compatible Bluetooth-enabled phone must first be paired. Phone performance depends on software, coverage & carrier. **11.** Bluetooth® audio device must be enabled with A2DP and AVRCP. **12.** All the airbag (AB) systems are Supplemental Restraint Systems. All ABs are designed to inflate only under certain conditions and in certain types of severe collisions: frontal and knee ABs typically inflate in frontal collisions; side and side curtain ABs in side collisions; Roll-Sensing Curtain ABs at a severe tilt degree, roll or lateral G-force. In all other accidents, the ABs will not inflate. To decrease the risk of injury from an inflating AB, always wear seatbelts, sit upright in the middle of the seat as far back as possible and do not lean against the door. Do not put objects in front of an AB or around the seatback. Do not use a rearward-facing child seat in any front passenger seat. The force of an inflating AB may cause serious injury or death. See *Owner's Manual* for further information/warnings. **13.** Always drive safely, obey traffic laws & focus on the road while driving. Siri® is available in Beta only on iPhone® 4S, iPhone® 5, iPad® with Retina® display, iPad® mini, & iPod® touch, 5th gen. & requires Internet access. Siri® is not available in all languages or all areas & features vary by area. Data charges may apply. See Apple.com & phone carrier for details. **14.** HD Radio™ Technology manufactured under license from iBiquity Digital Corporation U.S. and Foreign Patents. HD Radio™ and the HD, HD Radio, and "Arc" logos are proprietary trademarks of iBiquity Digital Corp. **15.** Use only if aware of circumstances surrounding the vehicle, and it is legal & safe to do so (e.g., car uncovered in open area, no people or pets in or nearby). If vehicle has not been driven for over a week, services will not be available until next time vehicle is started. Functionality depends on many factors, such as vehicle and smartphone connectivity. See usage precautions, service limitations & *Owner's Manual*. Data charges may apply. Registration, app download are required. Must have active Safety Connect subscription. Annual fee required after 1-year trial. **16.** Contact with the response center may not be available in all areas. Service Agreements required. A variety of subscription terms available; charges will vary. See lexus.com for details. **17.** Do not rely exclusively on the Intuitive Parking Assist system. Always look over your shoulder and use your mirrors to confirm clearance. System effectiveness depends on many factors. See *Owner's Manual* for details. **18.** The Pre-Collision System is designed to help reduce the crash speed and damage in certain frontal collisions only. It is not a collision-avoidance system and is not a substitute for safe and attentive driving. System effectiveness depends on many factors, such as speed, driver input and road conditions. See *Owner's Manual* for further information. **19.** Dynamic Radar Cruise Control is designed to assist the driver and is not a substitute for safe and attentive driving practices. See *Owner's Manual* for details. **20.** Do not rely exclusively on the Blind Spot Monitor. Always look over your shoulder and use your turn signal. There are limitations to the function, detection, range and clarity of the monitor. For a complete list of limitations and directions regarding use of the monitor, see *Owner's Manual*. **21.** Do not rely exclusively on the Rear Cross-Traffic Alert system. Always look over your shoulder and use your mirrors to confirm rear clearance. There are limitations to the function, detection, range and clarity of the system. To learn more, see *Owner's Manual*. **22.** PANDORA®, the PANDORA® logo, and the Pandora trade dress are trademarks or registered trademarks of Pandora Media, Inc., used with permission. **23.** 2015 EPA-estimated ratings. Actual mileage will vary. **24.** Performance figures are for comparison only and were obtained with prototype vehicles by professional drivers using special safety equipment and procedures. Do not attempt. **25.** iPhone® and iPad® are registered trademarks of Apple Inc. All rights reserved. **26.** FaceTime® is a registered trademark of Apple Inc. All rights reserved.

Lexus strives to build vehicles to match customer interest, and thus they typically are built with popular options and option packages. Not all options/packages are available separately, and some may not be available in all regions of the country. See lexus.com for information about options/packages commonly available in your area. If you would prefer a vehicle without any or with different options, contact your dealer to check for current availability or the possibility of placing a special order. Specifications, features, equipment, technical data, performance figures, options, and color and trim are based upon information available at time of printing, are subject to change without notice, and are for mainland U.S.A. vehicles only. Some vehicles shown with available equipment. See your Lexus dealer for details. Lexus reminds you to wear seatbelts, secure children in rear seat, obey all traffic laws and drive responsibly. For more information, call 800-USA-LEXUS (872-5398) or visit lexus.com. To learn more about your financing options, contact your Lexus dealer or call Lexus Financial Services at 800-874-7050.

