



**Technical Service
Information Bulletin**

February 16, 2005

Title:
**M.I.L. "ON" DTC P0031, P0051, P2238,
AND/OR P2241**

Models:
'04 – '05 ES 330

**ENGINE
EG003-05**

Introduction Under certain driving conditions, some 2004 and 2005 model year ES 330 vehicles may exhibit a M.I.L. "ON" with at least one of the following DTCs:

- P0031 (Oxygen Sensor Heater Control Circuit Low [Bank 1, Sensor 1])
- P0051 (Oxygen Sensor Heater Control Circuit Low [Bank 2, Sensor 1])
- P2238 (Oxygen Sensor Pumping Current Circuit Low (for A/F Sensor) [Bank 1, Sensor 1])
- P2241 (Oxygen Sensor Pumping Current Circuit Low (for A/F Sensor) [Bank 2, Sensor 1])

The A/F sensor manufacturing process and the Engine Control Module (ECM) (SAE term: Powertrain Control Module/PCM) logic have been modified to improve these conditions.

NOTE:

- Version 12.01a or later Diagnostic Tester software is required to perform this procedure.
- Before proceeding, verify the ECM (PCM) calibration has NOT been updated by checking for the Authorized Modifications Label (shown in step 2 of the Repair Procedure).

- Applicable Vehicles**
- 2004 model year **ES 330** vehicles.
 - 2005 model year **ES 330** vehicles produced **BEFORE** the Production Change Effective VIN shown below.

Production Change Information

MODEL	PRODUCTION CHANGE EFFECTIVE VIN
2005 ES 330	JTHBA30G*55086805

Warranty Information

OP CODE	DESCRIPTION	TIME	OFF	T1	T2
EG4029	Recalibrate ECM (PCM) Engine, R & R Both A/F Sensors	1.6	89661-33A40 89661-33A41 89661-33B30	8A	99

Applicable Warranty*:

This repair is covered under the Lexus Federal Emissions Warranty. This warranty is in effect for 96 months or 80,000 miles, whichever occurs first, from the vehicle's in-service date.

* Warranty application is limited to correction of a problem based upon a customer's specific complaint.





Parts
Information

PREVIOUS PART NUMBER	CURRENT PART NUMBER	PART NAME	QTY
89467-33110	Same	Sensor, Air Fuel Ratio, Rear (Bank 1)	1
89467-33100	Same	Sensor, Air Fuel Ratio, Front (Bank 2)	1
N/A	00451-00001-LBL	Authorized Modifications Label	1

NOTE:

Authorized Modification Labels may be ordered in packages of 25 from the Materials Distribution Center (MDC) through Dealer Daily Dealer Support Materials System or by calling the MDC at 1-800-622-2033.

Required
SSTs

SPECIAL SERVICE TOOLS (SSTs)	PART NUMBER	QUANTITY
Lexus Diagnostic Tester Kit* 	01001270	1
12 Megabyte Diagnostic Tester Program Card with version 12.01a Software (or later)* 	01002593-005	1

* Essential SSTs.

NOTE:

Additional Diagnostic Tester Kits, Program Cards, or other SSTs may be ordered by calling SPX/OTC at 1-800-933-8335.

Calibration
Identification
Chart

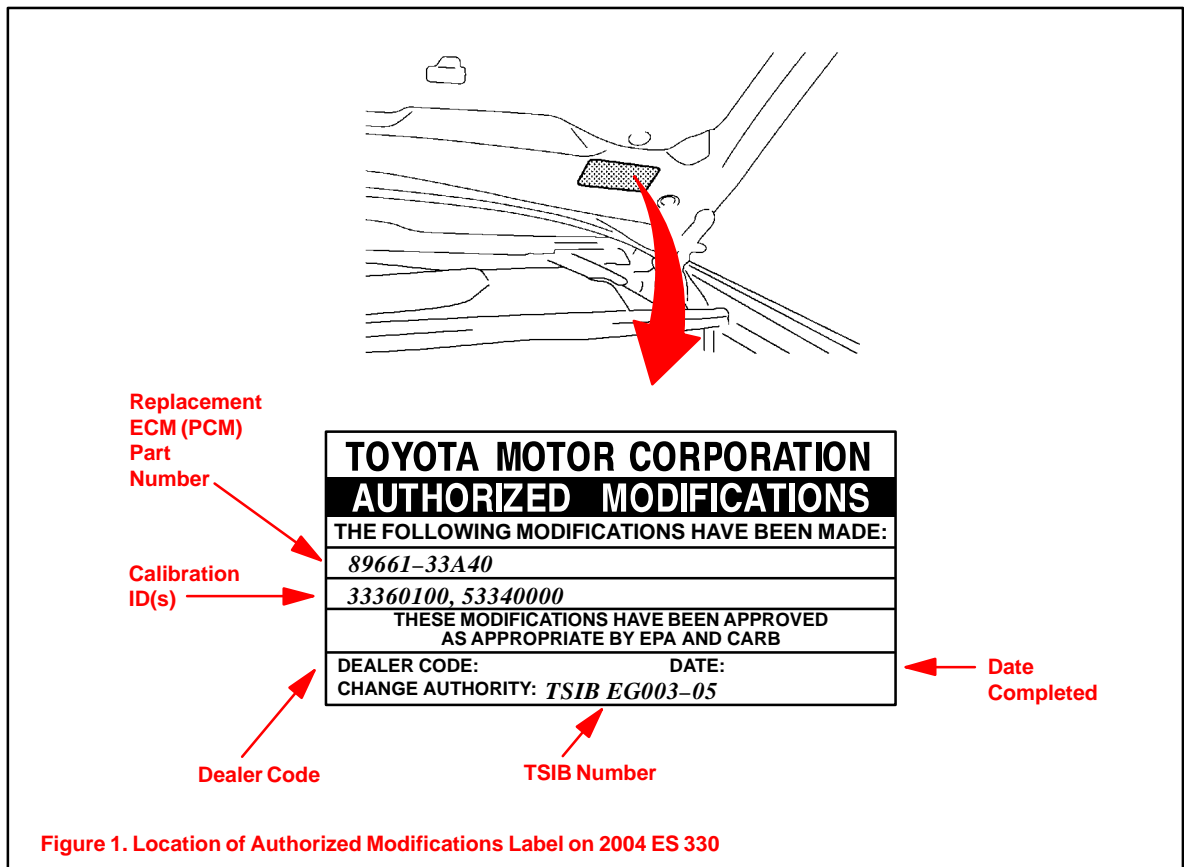
ENGINE	ECM (CPU)	PREVIOUS CALIBRATION ID	NEW CALIBRATION ID
3MZ-FE	Main	33350000 33350100 33360000	33360100
	Sub	53334000	53340000

NOTE:

- Although the calibration description in the Calibration Update Wizard and on the Diagnostic Tester reads "04 ES 330," these calibrations apply to 2004 and 2005 model year ES 330 vehicles produced before the Production Change Effective VIN shown on page 1 of this TSIB.
- 2004 model year ES 330 vehicles, which have been flash reprogrammed using the procedures in this TSIB, will contain upgraded 2005 model year OBD II logic. Refer to the 2005 model year ES 330 Repair Manual information on the Technical Information System (TIS) when checking Powertrain Diagnostic Trouble Codes (DTCs) on 2004 model year vehicles that have been reprogrammed.

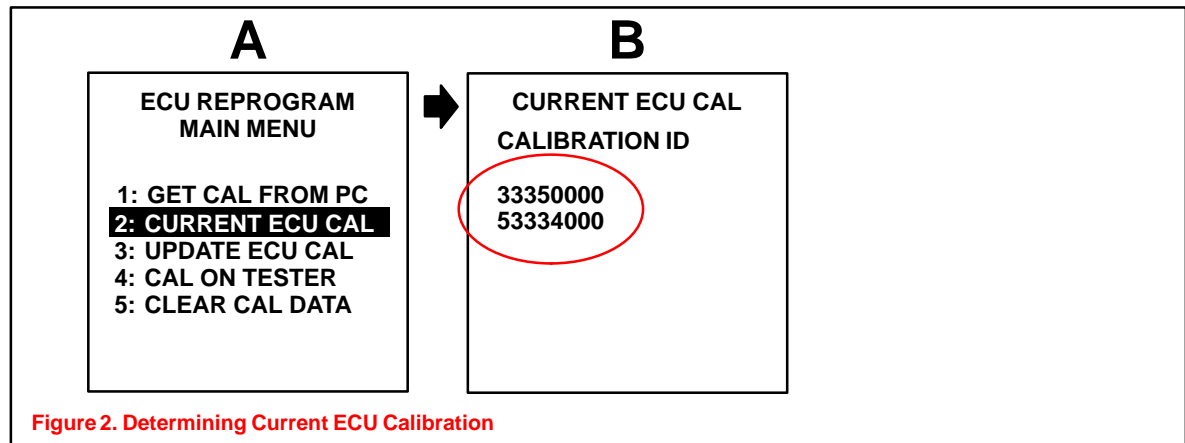
Repair Procedure

1. Replace both Bank 1, Sensor 1 and Bank 2, Sensor 1 air fuel ratio sensors.
2. Check for the Authorized Modifications Label affixed to the vehicle in the location shown in Figure 1. Confirm if ECM (PCM) calibration has been updated. If not the latest ECM (PCM) calibration — go to step 3.



Repair Procedure
(Continued)

3. Connect the Diagnostic Tester to the vehicle and select CURRENT ECU CAL from the ECU REPROGRAM MAIN MENU. Determine the vehicle's current ECU calibration (see Figure 2).
 - The sample screen prints seen below are the 12.01a software version and may differ from subsequent software versions.



NOTE:

- If Calibration ID matches "Previous Calibration ID" as shown in Calibration Identification Chart on page 2, proceed with flash reprogramming.
- If Calibration ID matches "New Calibration ID" as shown in Calibration Identification Chart, this vehicle has already been programmed. Refer to TIS for diagnostic procedures applicable to any stored DTCs.

4. If ECU calibration ID is not the same as the "New Calibration ID" listed previously, proceed to Flash Reprogram ECM (PCM).
5. **Flash Reprogram ECM (PCM)**
 - A. Follow the procedures outlined in TSIB No. SS001–01, "ECU Flash Reprogramming Process," and flash the ECM (PCM) with the new calibration file update.
 - B. Enter the required information on the Authorized Modifications Label and affix it to the vehicle at the location shown in Figure 1 (page 3). The Authorized Modifications Label is available through the MDC, P/N 00451–00001–LBL.
6. Follow the procedures outlined in TSIB No. EG012–04, "Entering VIN During ECM (PCM) Replacement and/or DTC P0630," and write the VIN to the ECM (PCM).
7. The repair is complete. Test drive vehicle to confirm normal operation.