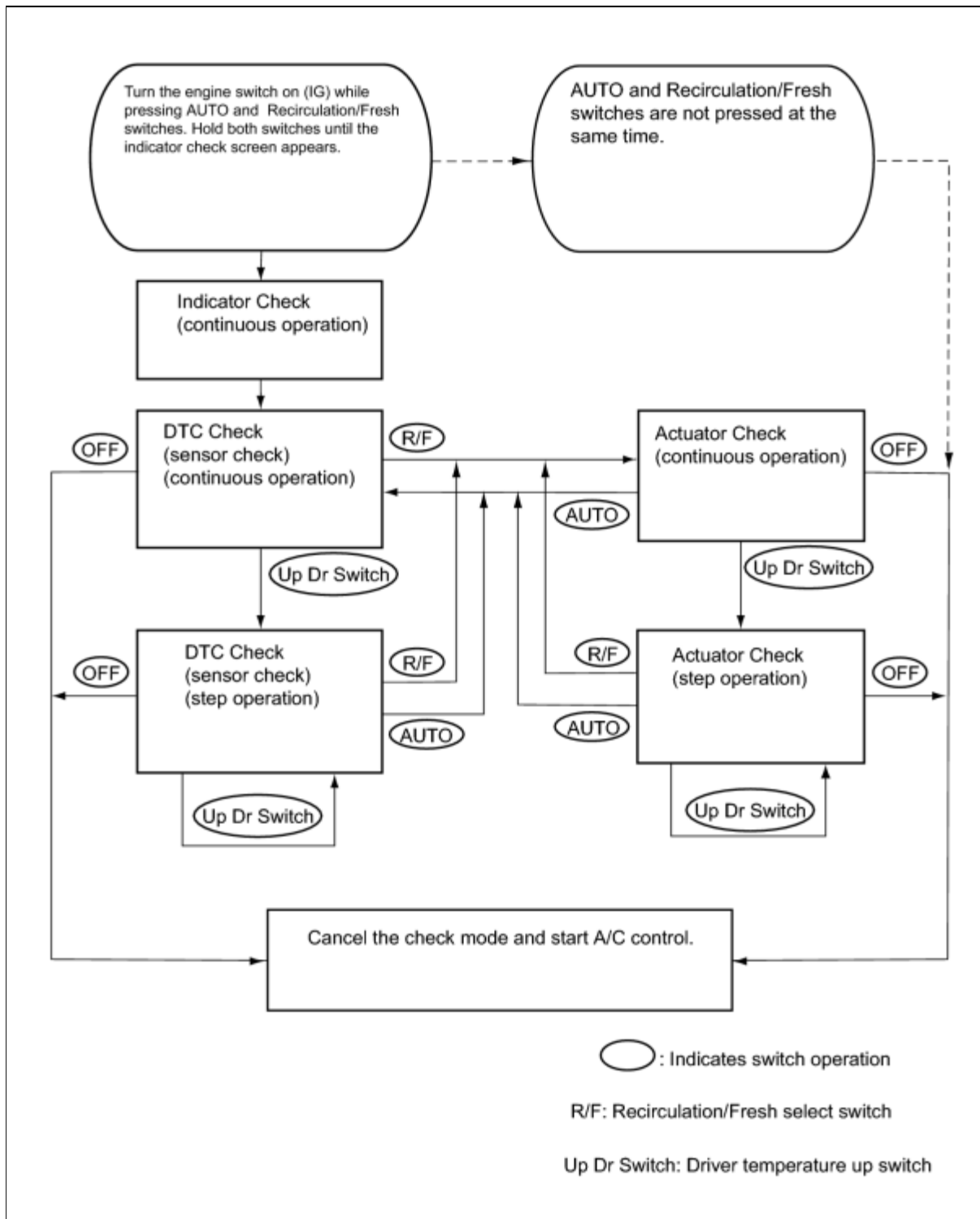


<b>Last Modified:</b> 7-13-2007		1.7 D
<b>Service Category:</b> Vehicle Interior	<b>Section:</b> Heating/Air Conditioning	
<b>Model Year:</b> 2008	<b>Model:</b> ES350	<b>Doc ID:</b> RM000000T8Q011X
<b>Title:</b> AIR CONDITIONING: AIR CONDITIONING SYSTEM: CHECK MODE PROCEDURE (2008 ES350)		

## CHECK MODE PROCEDURE

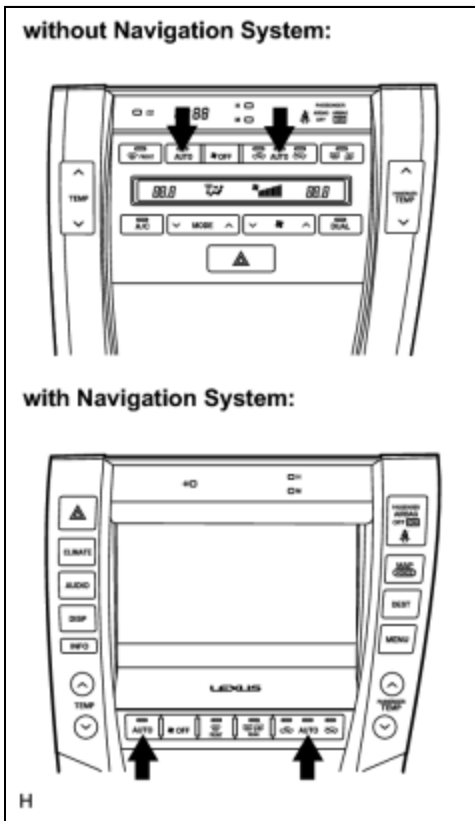
### 1. LIST OF OPERATION METHODS

- (a) By operating each of the A/C control switches as shown in the diagram below, it is possible to enter the diagnostic check mode.



## 2. INDICATOR CHECK

- (a) Turn the engine switch off.

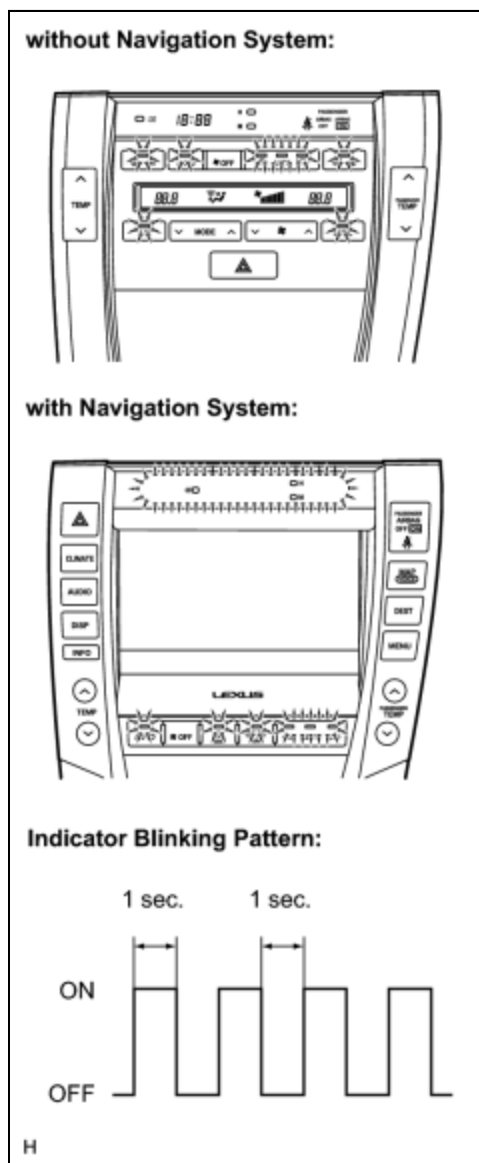


(b) Turn the engine switch on (IG) while pressing the A/C control "AUTO" switch and "R/F" switch simultaneously. Hold both switches until the indicator check screen appears.

(c) The indicator check is automatically performed when panel diagnosis is activated. Check that the indicators light up and go off at 1 second intervals 4 times in succession.

**HINT:**

- The sensor check automatically starts when the indicator check is completed.
- Press the "OFF" switch to cancel the check mode.
- If a navigation system is installed, the indicator will blink and the buzzer will sound.



### 3. DTC CHECK (SENSOR CHECK)

- (a) Start the engine and warm it up.
- (b) Perform the indicator check.

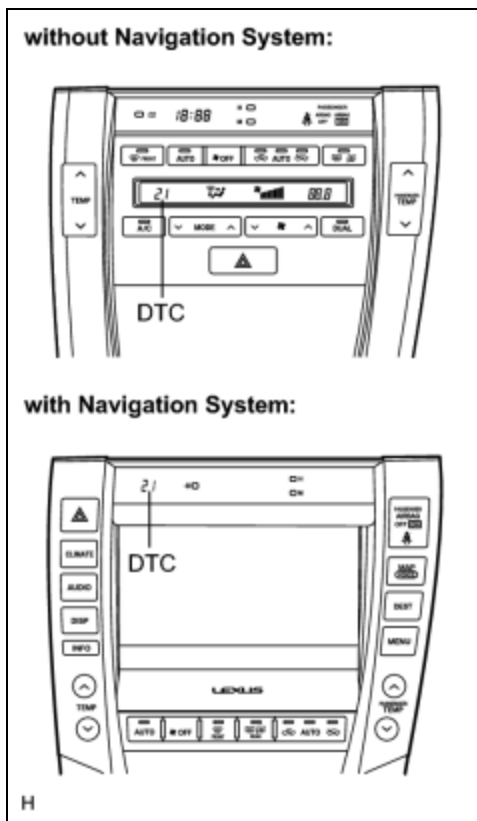
#### **HINT:**

After the indicator check is completed, the system enters the DTC check mode automatically.

- (c) Read the DTC on the panel.

#### **NOTICE:**

- In the sensor check mode, which is automatically transferred from the indicator check mode, troubleshooting may be partially performed. Be sure



to perform the actuator check, and then the sensor check again.

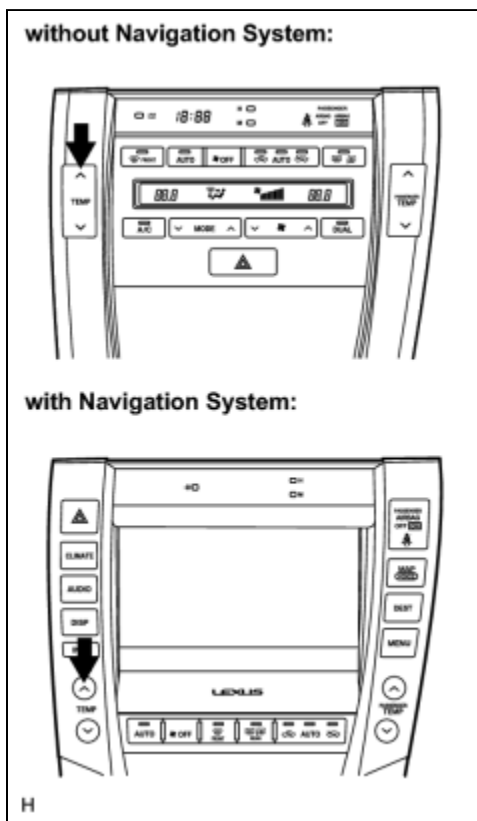
- If the check is performed in a dark place, DTC 21 or 24 may be displayed even though the system is normal.

**HINT:**

Refer to the DTC chart (Diagnostic Trouble Code chart) for details of the codes

[INFO](#)

- When there are no problems, DTC 00 is output.
- As an example, the illustration shows that DTC 21 is output.



- (d) If the steps are difficult to read because they change automatically, push the "UPDr" switch to display the steps one at a time so that they can be read easily. The items are displayed step by step each time the "UPDr" switch is pushed.

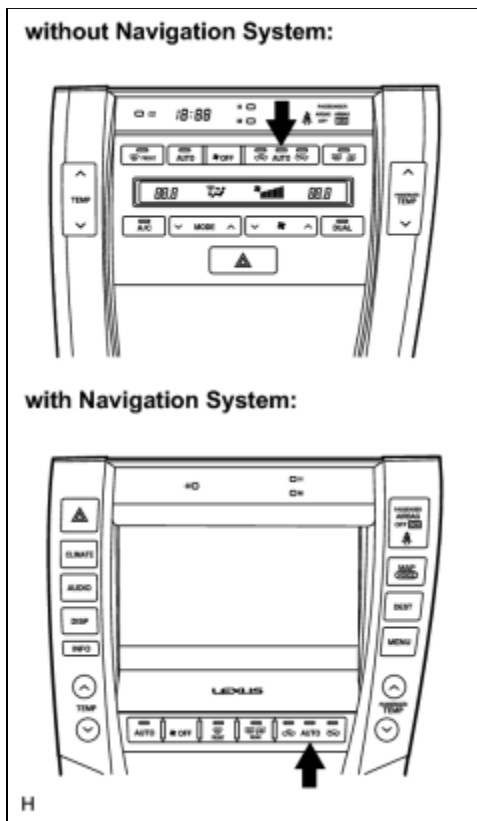
**HINT:**

- Push the "OFF" switch to finish panel diagnosis.
- Push the "R/F" switch to enter the actuator check mode.

#### 4. ACTUATOR CHECK

- (a) Start the engine and warm it up.

(b) Perform the indicator check.



(c) Push the "R/F" switch to perform the actuator check.

**HINT:**

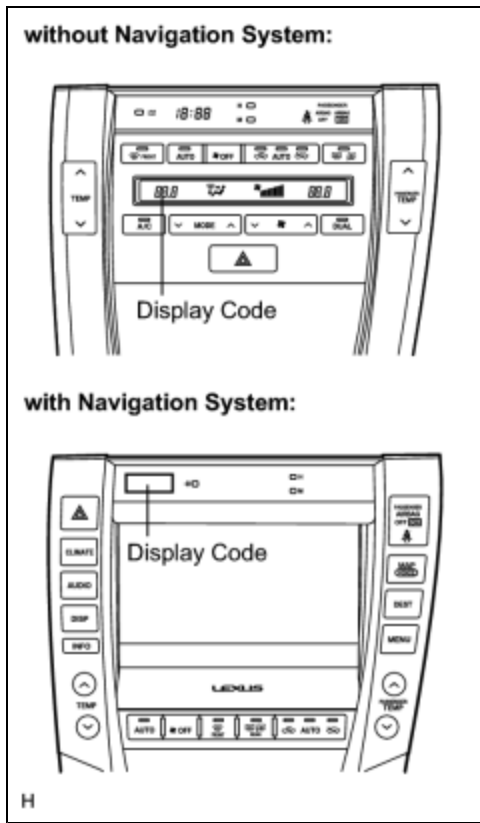
Be sure to perform the actuator check after starting the engine.

(d) As the actuator check is repeated from steps 1 to 10 at 1-second intervals, check the temperature and air flow visually and by hand.

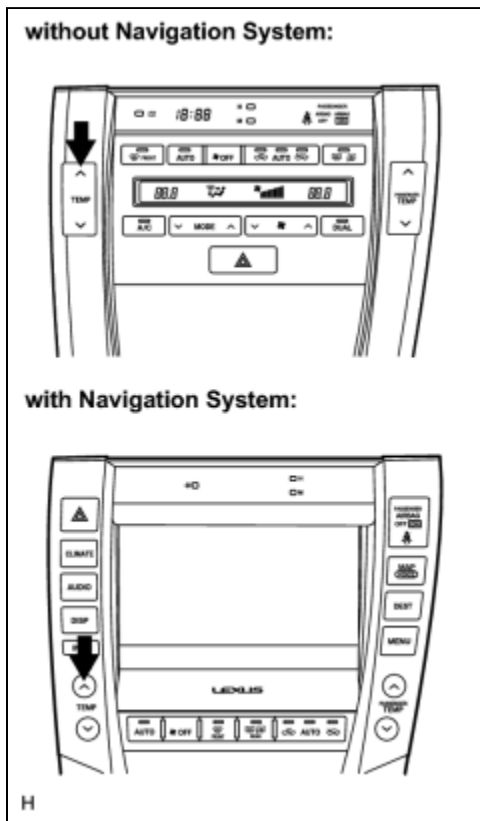
**HINT:**

- The display blinks at 1-second intervals in the step operation.
- Push the "OFF" switch to finish panel diagnosis.
- Push the "AUTO" switch to enter the sensor check mode.

STEP NO.	DISPLAY CODE	CONDITIONS				
		BLOWER LEVEL	AIR MIX DAMPER	AIRFLOW VENT	AIR INLET DAMPER	COMPRESSOR
1	0	0	0% open	FACE	FRESH	OFF
2	1	1	0% open	FACE	FRESH	OFF
3	2	17	0% open	FACE	RECIRCULATION / FRESH	ON
4	3	17	0% open	FACE	RECIRCULATION	ON
5	4	17	50% open	B/L	RECIRCULATION	ON
6	5	17	50%	B/L	RECIRCULATION	ON



			open			
7	6	17	50% open	FOOT	FRESH	ON
8	7	17	100% open	FOOT-0	FRESH	ON
9	8	17	100% open	F/D	FRESH	ON
10	9	31	100% open	DEF	FRESH	ON



(e) If the steps are difficult to read because they change automatically, push the "UPDr" switch to display the steps one at a time so that they can be read easily. The items are displayed step by step each time the "UPDr" switch is pushed.

**HINT:**

- Push the "OFF" switch to finish panel diagnosis.
- Push the "R/F" switch to enter the sensor check mode.