

Wind Noise From the Rear Left Door

Service Category Vehicle Exterior

Section Window/Glass **Market** USA

Toyota Supports
ASE Certification 

Applicability

YEAR(S)	MODEL(S)	ADDITIONAL INFORMATION
2021 - 2022	ES250	WMI(s): 58A
2019 - 2022	ES300H, ES350	WMI(s): 58A

Introduction

Some 2019 – 2022 model year ES 300h and ES 350 vehicles and 2021 – 2022 model year ES 250 vehicles may exhibit a whistle or wind noise from the rear left quarter window. An updated repair process has been created to reduce the possibility of this condition. Follow the Repair Procedure in this bulletin to address this condition.

Production Change Information

This bulletin applies to vehicles produced **BEFORE** the Production Change Effective VINs shown below.

MODEL	PLANT	DRIVETRAIN	HV BATTERY	PRODUCTION CHANGE EFFECTIVE VIN
ES 250	TMMK	AWD	–	58AC11D1#NU009426
ES 300h		HV	NiMH	58AB21B1#NU127138
			Li-ion	58AFA1C#NU020202
ES 350		2WD	–	58ACZ1B1#NU126742

Wind Noise From the Rear Left Door

Warranty Information

OP CODE	DESCRIPTION	TIME	OFP	T1	T2
671111	R & R Rear Left Quarter Window (Door Without Window Shade)	0.6	68012-06010	59	13
	R & R Rear Left Quarter Window (Door With Window Shade)	0.6	68012-06020		

APPLICABLE WARRANTY

- This repair is covered under the Lexus Basic Warranty. This warranty is in effect for 48 months or 50,000 miles, whichever occurs first, from the vehicle's in-service date.
- Warranty application is limited to occurrence of the specified condition described in this bulletin.

Parts Information

PART NUMBER	DESCRIPTION	PART NAME	QTY
68012-06010	Without Door Window Sunshade	Glass Sub-assy, Rear Door Quarter Window, LH	1
68012-06020	With Door Window Sunshade		1

Wind Noise From the Rear Left Door

Repair Procedure

1. Confirm the condition exists.

Does the vehicle exhibit a whistle or wind noise from the rear left quarter window?

- **YES** — Continue to step 2.
- **NO** — This bulletin does NOT apply. Continue diagnosis using the applicable Repair Manual.

2. Remove the rear quarter window assembly.

Refer to TIS, applicable model and model year Repair Manual:

- [2019 – 2021](#) ES 300h, and ES 350 [06/2018 – 08/2020]:
Vehicle Exterior – Door/Hatch – “Door / Hatch: Rear Door: Disassembly”
- [2021](#) ES 250 [06/2018 – 08/2020]:
Vehicle Exterior – Door/Hatch – “Door / Hatch: Rear Door: Disassembly”
- [2022](#) ES 250, ES 300h, and ES 350 [08/2021 –]:
Vehicle Exterior – Door/Hatch – “Door / Hatch: Rear Door: Disassembly”

3. Inspect the seal for deformation.

Is the seal deformed?

- **YES** — Continue to step 4.
- **NO** — Go to step 5

Figure 1. Example of Deformed Seal



1	Deformed Seal
----------	----------------------

Wind Noise From the Rear Left Door

Repair Procedure (continued)

4. Replace the rear left quarter window assembly with a NEW one.
Refer to TIS, applicable model and model year Repair Manual:

NOTE
ONLY step 22.

- [2019 – 2021](#) ES 300h and ES 350 [06/2018 – 08/2020]:
Vehicle Exterior – Door/Hatch – “Door / Hatch: Rear Door: Reassembly”
 - [2021](#) ES 250 [06/2018 – 08/2020]:
Vehicle Exterior – Door/Hatch – “Door / Hatch: Rear Door: Reassembly”
 - [2021 – 2022](#) ES 250, ES 300h, and ES 350 [08/2020 –]:
Vehicle Exterior – Door/Hatch – “Door / Hatch: Rear Door: Reassembly”
- Go to step 6.

5. Reinstall the EXISTING rear left quarter window.
Refer to TIS, applicable model and model year Repair Manual:

NOTE
ONLY step 22.

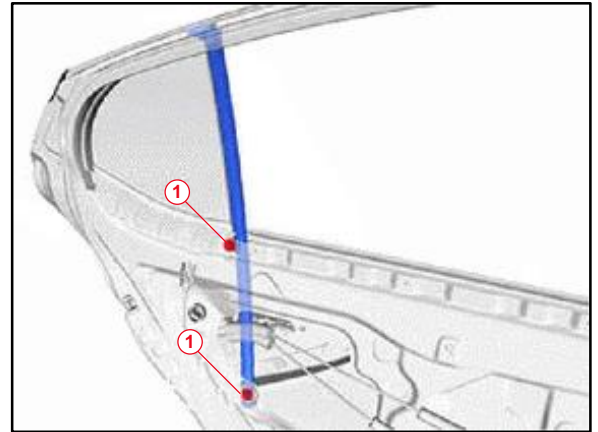
- [2019 – 2021](#) ES 300h and ES 350 [06/2018 – 08/2020]:
Vehicle Exterior – Door/Hatch – “Door / Hatch: Rear Door: Reassembly”
- [2021](#) ES 250 [06/2018 – 08/2020]:
Vehicle Exterior – Door/Hatch – “Door / Hatch: Rear Door: Reassembly”
- [2021 – 2022](#) ES 250, ES 300h, and ES 350 [08/2020 –]:
Vehicle Exterior – Door/Hatch – “Door / Hatch: Rear Door: Reassembly”

Wind Noise From the Rear Left Door

Repair Procedure (continued)

6. Install the rear door window division bar sub-assembly.
 - A. Install the two bolts.
 Torque: **6.75 N*m (69 kgf*cm, 5 ft*lbf)**

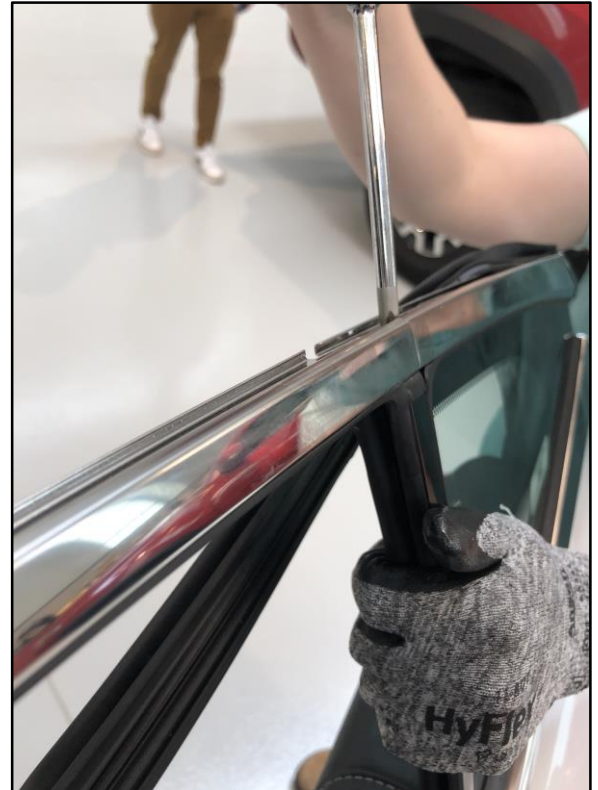
Figure 2.



1	Install Bolt Here
----------	--------------------------

- B. Hold and apply pressure to the rear division bar minimizing gap to the rear door quarter window glass sub-assembly.

Figure 3.

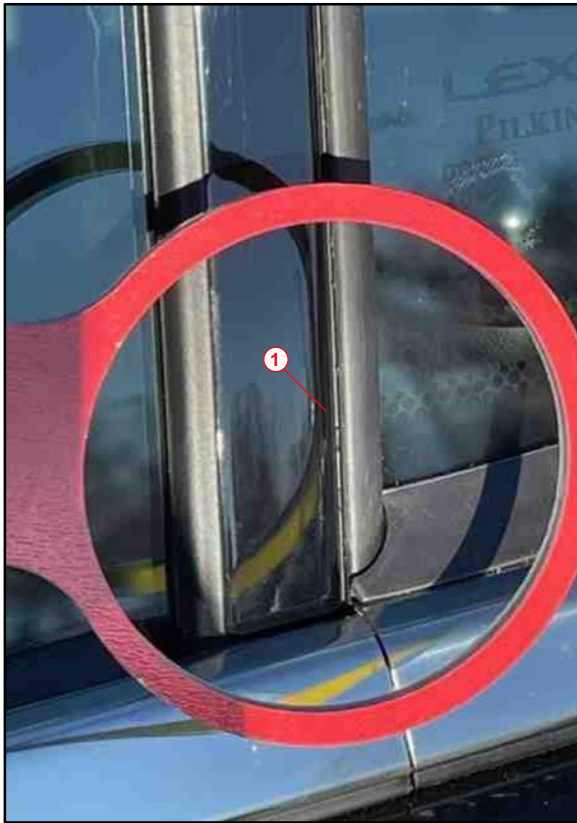


Wind Noise From the Rear Left Door

Repair Procedure (continued)

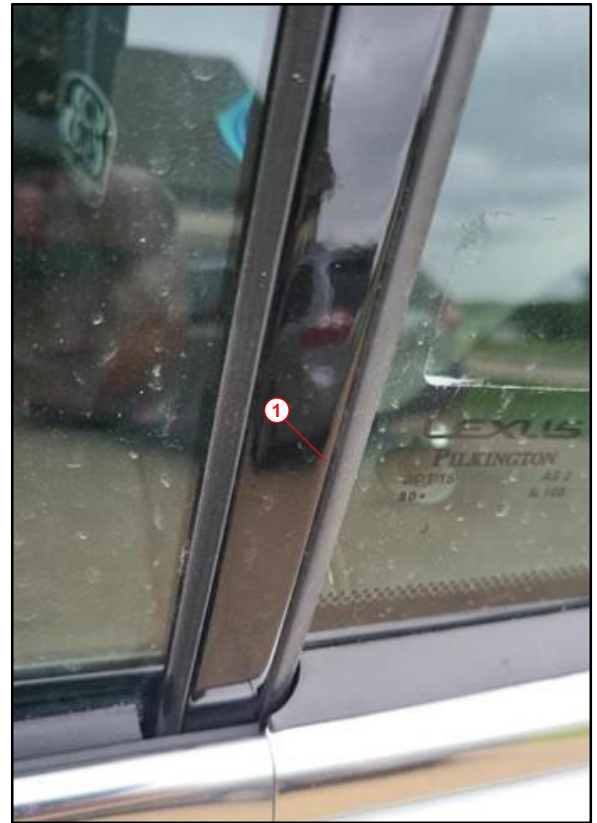
- C. Confirm that there is NO gap between the division bar and the rear door quarter window glass sub-assembly.

Figure 4.



1	Gap Between the Rear Division Bar and the Window Glass Sub-assembly
----------	--

Figure 5.



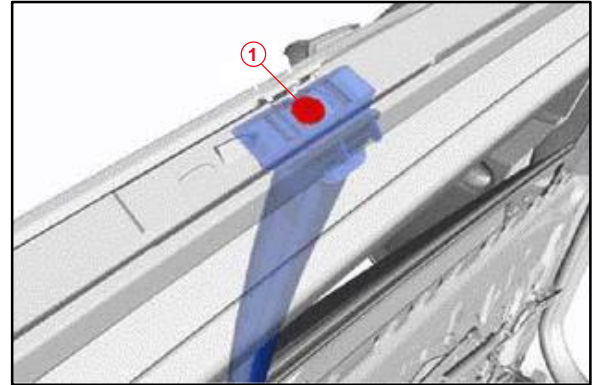
1	No Gap Between the Rear Division Bar and the Window Glass Sub-assembly
----------	---

Wind Noise From the Rear Left Door

Repair Procedure (continued)

- D. Install the rear door window division bar sub-assembly with the screw.

Figure 6.



1	Screw
----------	--------------

7. Complete the repair following the Repair Manual starting at step 24.
Refer to TIS, applicable model and model year Repair Manual:
- [2019 – 2021](#) ES 300h, and ES 350 [06/2018 – 08/2020]:
Vehicle Exterior – Door/Hatch – “Door / Hatch: Rear Door: Reassembly”
 - [2021](#) ES 250 [06/2018 – 08/2020]:
Vehicle Exterior – Door/Hatch – “Door / Hatch: Rear Door: Reassembly”
 - [2021 – 2022](#) ES 250, ES 300h, and ES 350 [08/2020 –]:
Vehicle Exterior – Door/Hatch – “Door / Hatch: Rear Door: Reassembly”
8. Confirm the condition is no longer present.