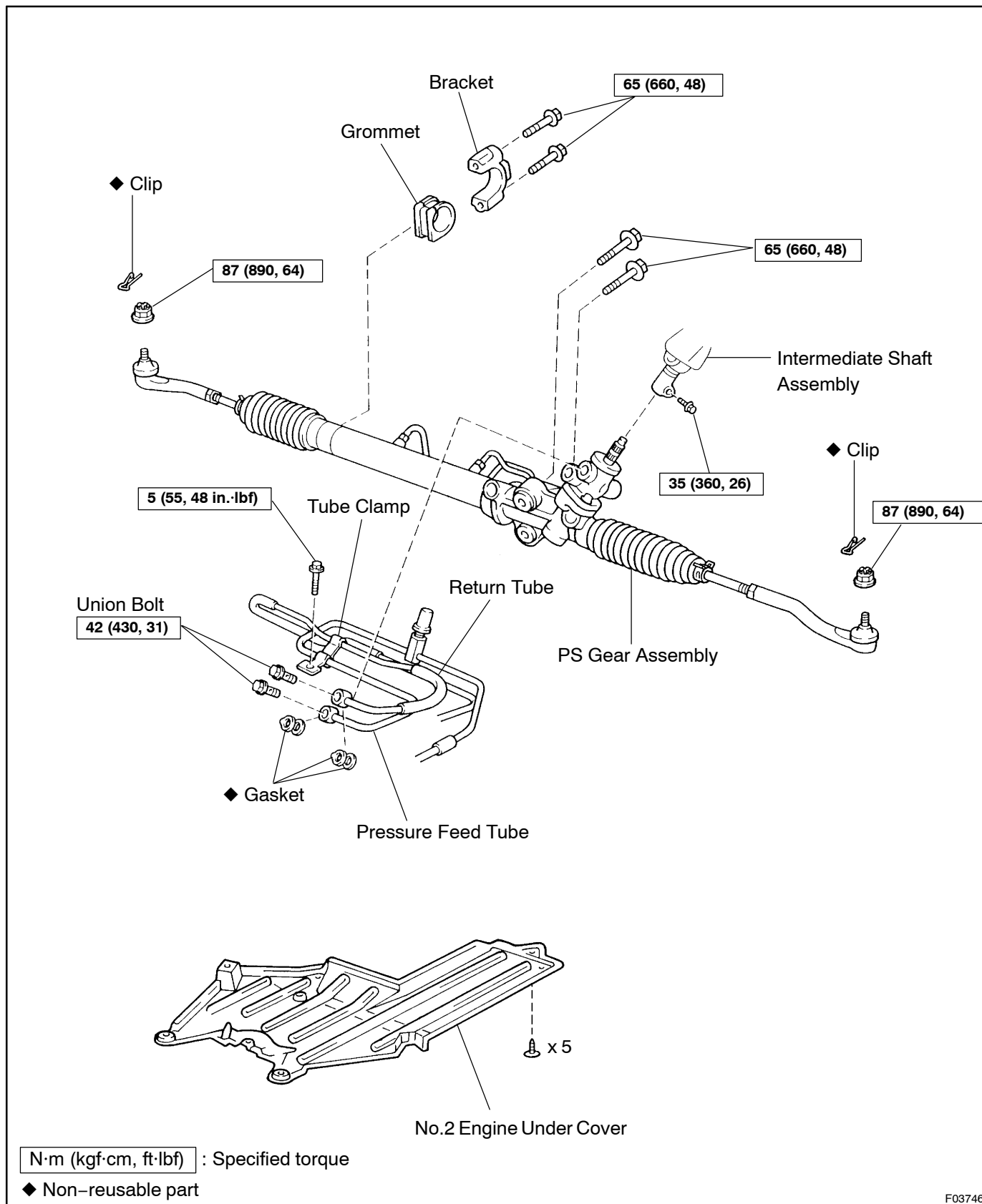
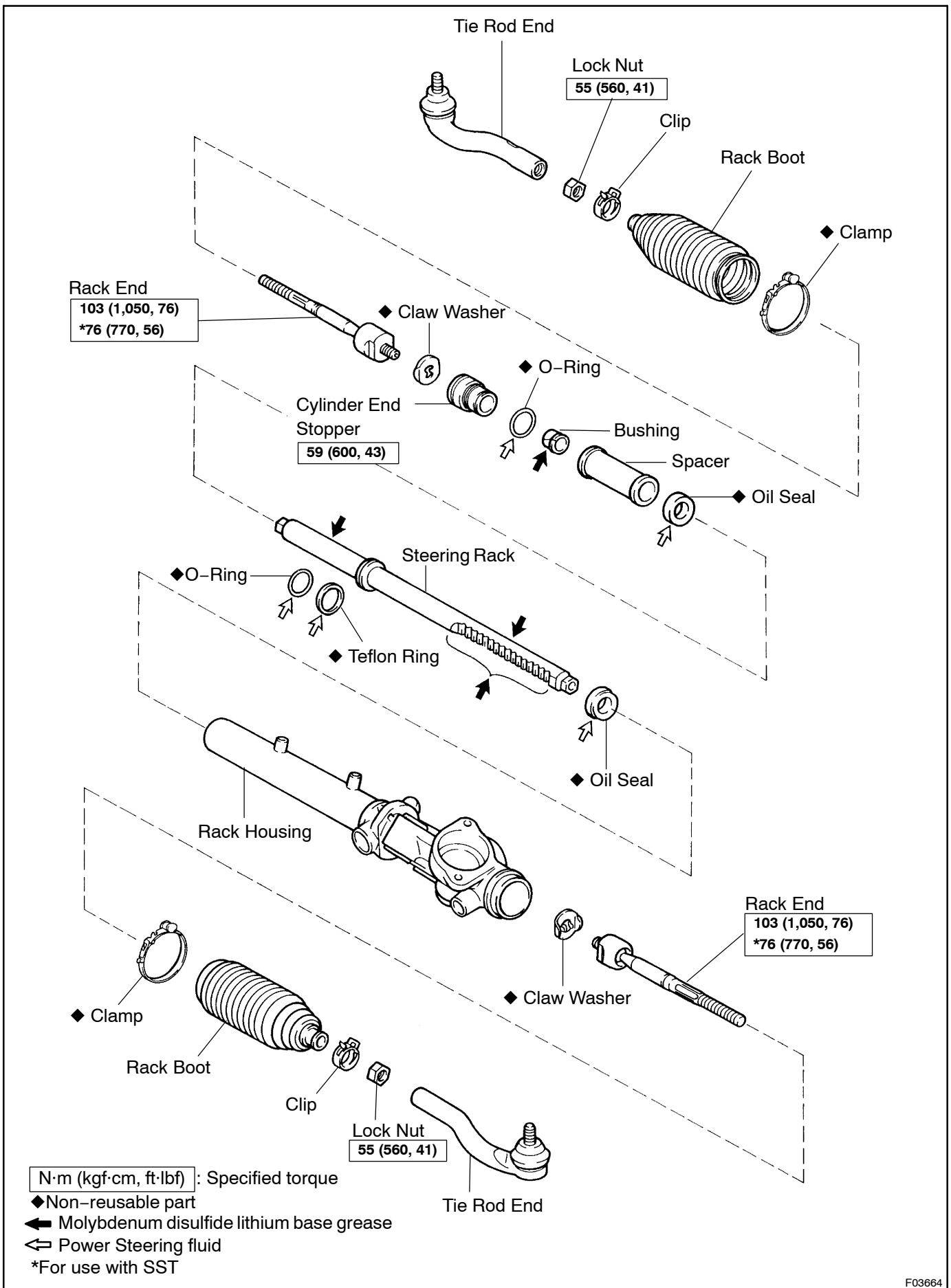


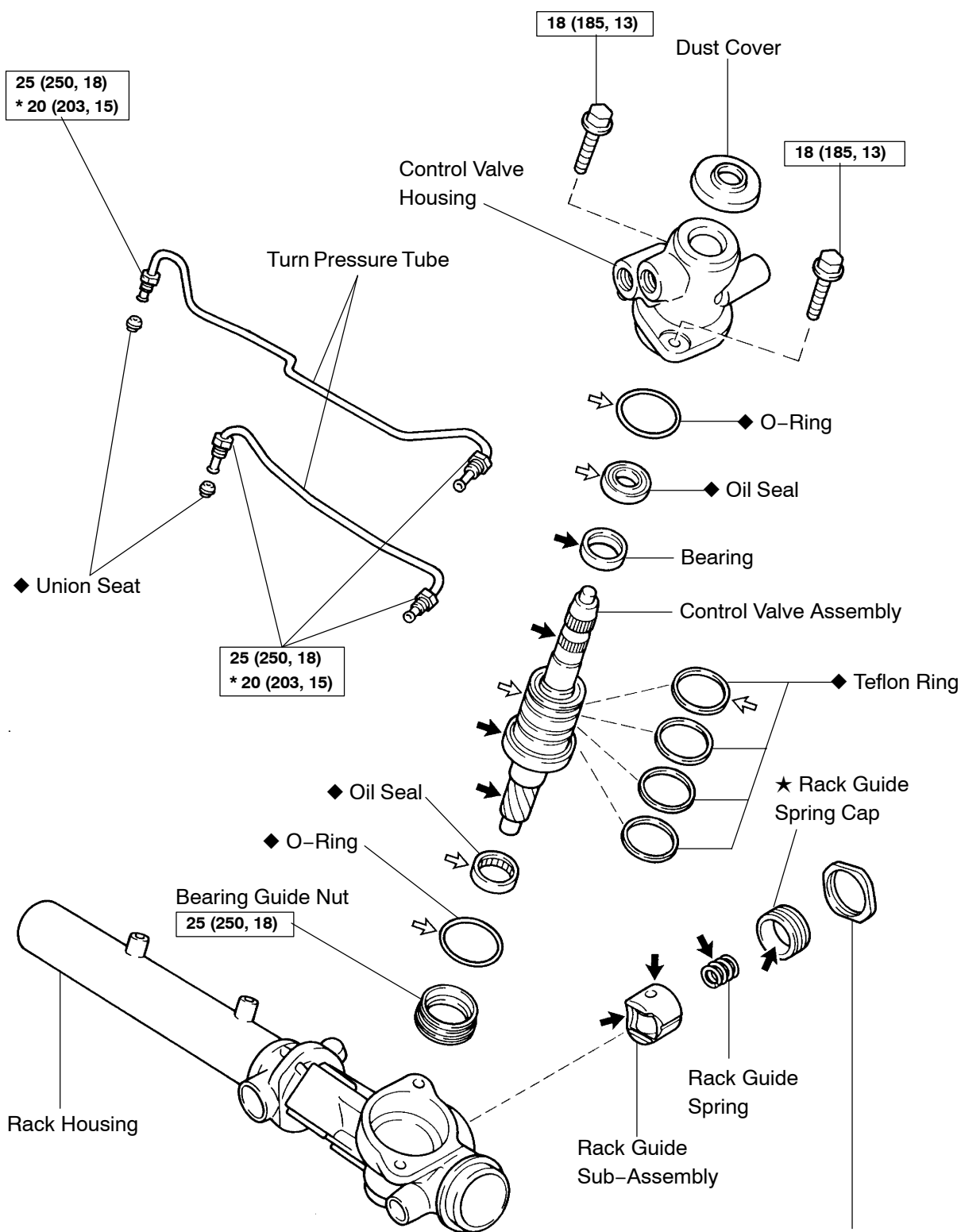
POWER STEERING GEAR COMPONENTS

SR0E2-02



F03746





N·m (kgf·cm, ft·lbf) : Specified torque
◆ Non-reusable part
★ Precoated part
← Molybdenum disulfide lithium base grease
⇐ Power Steering fluid
 *For use with SST

★ Rack Guide Spring Cap Lock Nut
69 (700, 51)
*** 51 (521, 38)**