

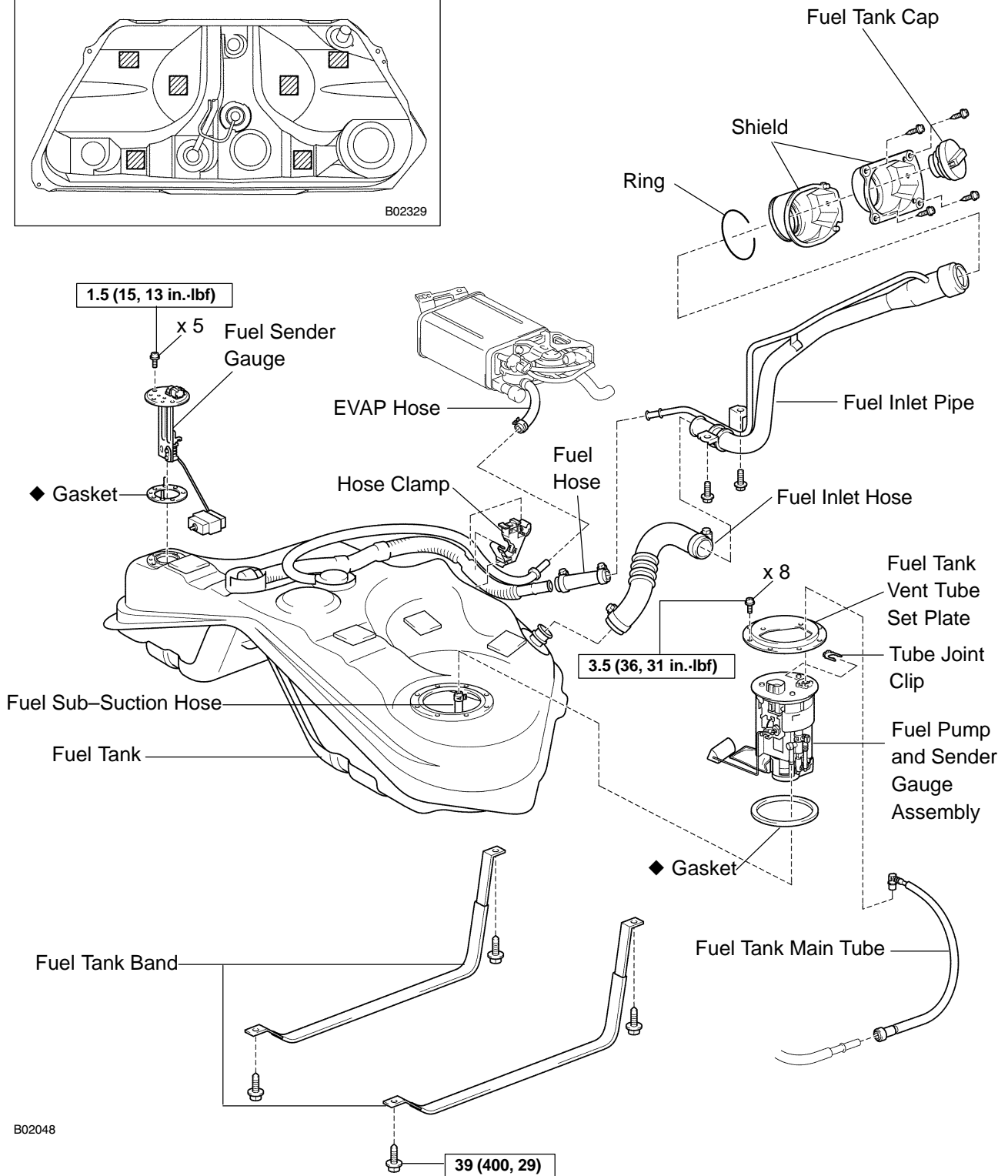
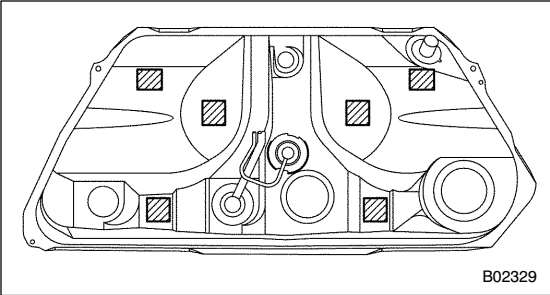
FUEL TANK AND LINE COMPONENTS

SF00Z-01

CAUTION:

- Always use new gaskets when replacing the fuel tank or component parts.
- Apply the proper torque to all parts tightened

Location of Fuel Tank Cushion



B02048

39 (400, 29)

N·m (kgf·cm, ft·lbf) : Specified torque

◆ Non-reusable part

B02739