


Clicking Noise From Front Wheel Area During Slow Speed Turns (F Sport 2WD)

Service
Category Brake

Section Brake (front)

Market USA

Lexus Supports
ASE Certification 

Applicability

YEAR(S)	MODEL(S)	ADDITIONAL INFORMATION
2016	GS200T	VDS(s): BA1BL, BZ1BL
2013 - 2016	GS350	VDS(s): BE1BL, BE1KS, BE5KS, BZ1BL
2013 - 2016	GS450H	VDS(s): BS1BL
2015 - 2016	RC200T, RC350	VDS(s): HA5BC, HE5BC

REVISION NOTICE

February 6, 2017 Rev1:

- The Supersession Notice has been added.
- Any previous printed versions of this bulletin should be discarded.

SUPERSESSON NOTICE

The information contained in this bulletin supersedes SB No. L-SB-0002-14.

- The entire bulletin has been updated.
- Service Bulletin No. L-SB-0002-14 is Obsolete and any printed versions should be discarded. Be sure to review the entire content of this bulletin before proceeding.

Introduction

Some 2013 – 2016 model year GS and 2015 – 2016 model year RC vehicles equipped with 2WD drivetrain and the F Sport package may exhibit a clicking type noise coming from the front wheel area during a slow (parking lot) speed turn. Follow the Repair Procedure in this bulletin to address this condition.

Use the following link for an example of the vehicle condition:

[Example of condition.](#)

NOTE

These vehicles are originally equipped with a lightweight 2-piece aluminum rotor assembly. The click noise that can be heard during sharp turns is a normal condition. For customers that find this objectionable, an alternative steel rotor is available. The visual appearance of the rotor is different. Before performing this repair, it is recommended that the visual differences be reviewed with the customer.

Clicking Noise From Front Wheel Area During Slow Speed Turns (F Sport 2WD)

Introduction (Continued)

Figure 1. Before (Aluminum)

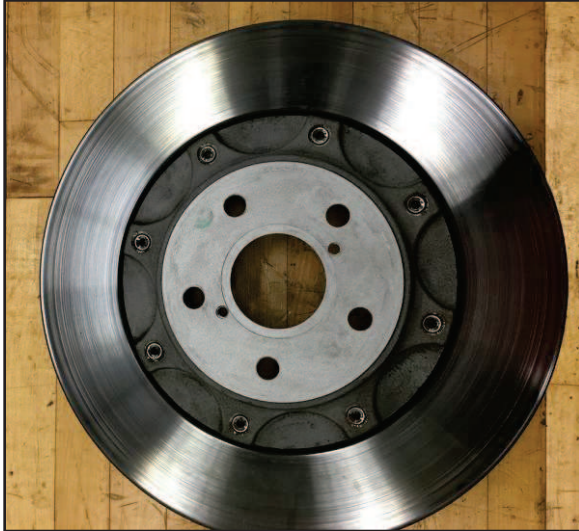


Figure 2. After (Steel)

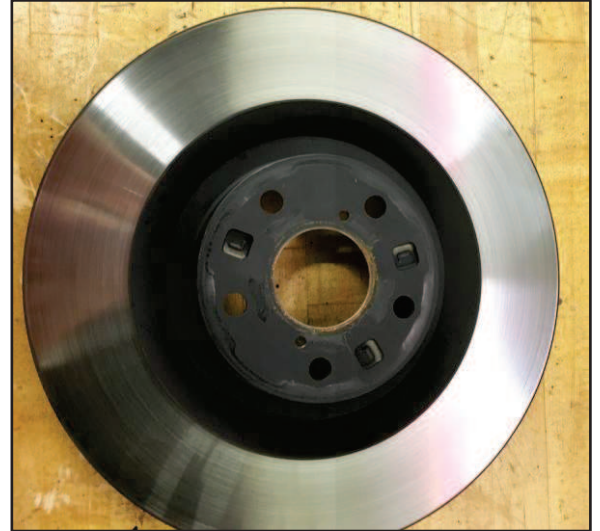


Figure 3. Before* (Aluminum)



Figure 4. After* (Steel)



* Pictures are an example of 1 wheel type for the vehicle. Other wheel types may have slightly different results.

Clicking Noise From Front Wheel Area During Slow Speed Turns (F Sport 2WD)

Warranty Information

OP CODE	DESCRIPTION	TIME	OFF	T1	T2
BR1611	Install Steel Rotors, New Brake Pads, and Painted Front Axle Hub Shim	1.6	43512-30370 43512-30371 43516-30060 43516-30061	91	41

APPLICABLE WARRANTY

- This repair is covered under the Lexus Basic Warranty. This warranty is in effect for 48 months or 50,000 miles, whichever occurs first, from the vehicle's in-service date.
- Warranty application is limited to occurrence of the specified condition described in this bulletin.

Parts Information

PART NUMBER		PART NAME	QTY
PREVIOUS	NEW		
43512-30371 43512-30370	43512-WY010	Disc, FR RH (Steel Center)*	1
43516-30061 43516-30060	43516-WY020	Disc, FR LH (Steel Center)*	1
04465-30491		Pad Kit, Disc Brake, Front	1
47791-30020		Plate, Disc Brake AIR Guide, RH**	2

* Both rotors MUST be replaced.

** The part number includes 1 shim.

** Even though the part description says "RH" this shim is the same for the right and left sides.

Repair Procedure

1. Is this vehicle an F Sport 2WD vehicle?
 - **YES** – Continue to step 2.
 - **NO** – This bulletin does NOT apply. Continue diagnosis using the applicable Repair Manual.
2. Does the vehicle exhibit a clicking type noise coming from the front wheel area during a slow speed turn as described in the Introduction?
 - **YES** – Continue to step 3.
 - **NO** – This bulletin does NOT apply. Continue diagnosis using the applicable Repair Manual.

Clicking Noise From Front Wheel Area During Slow Speed Turns (F Sport 2WD)

Repair Procedure (Continued)

3. Install the front axle hub shim (Plate, Disc Brake AIR Guide RH), updated (steel 1-piece) front rotors, and Brake Pad Kit as shown below.

- A. Remove the front hub bearing.

Refer to the Technical Information System (TIS), applicable model and model year Repair Manual:

- [2016](#) GS 200t:

Drivetrain – Axle and Differential – “Axle and Differential: Front Axle Hub: Removal”

- [2013](#) / [2014](#) / [2015](#) / [2016](#) GS 350:

Drivetrain – Axle and Differential – “Axle and Differential: Front Axle Hub: Removal”

- [2013](#) / [2014](#) / [2015](#) / [2016](#) GS 450h:

Drivetrain – Axle and Differential – “Axle and Differential: Front Axle Hub: Removal”

- [2016](#) RC 200t:

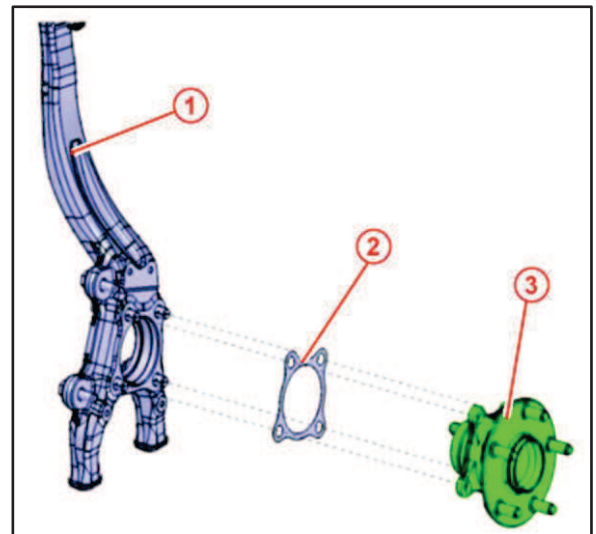
Drivetrain – Axle and Differential – “Axle and Differential: Front Axle Hub: Removal”

- [2015](#) / [2016](#) RC 350:

Drivetrain – Axle and Differential – “Axle and Differential: Front Axle Hub: Removal”

- B. Install the painted brake shim between the hub and knuckle as shown.

Figure 5.



1	Knuckle
2	Shim
3	Hub Bearing

Clicking Noise From Front Wheel Area During Slow Speed Turns (F Sport 2WD)

Repair Procedure (Continued)

C. Reinstall the hub bearing, NEW rotors and NEW brake pads.

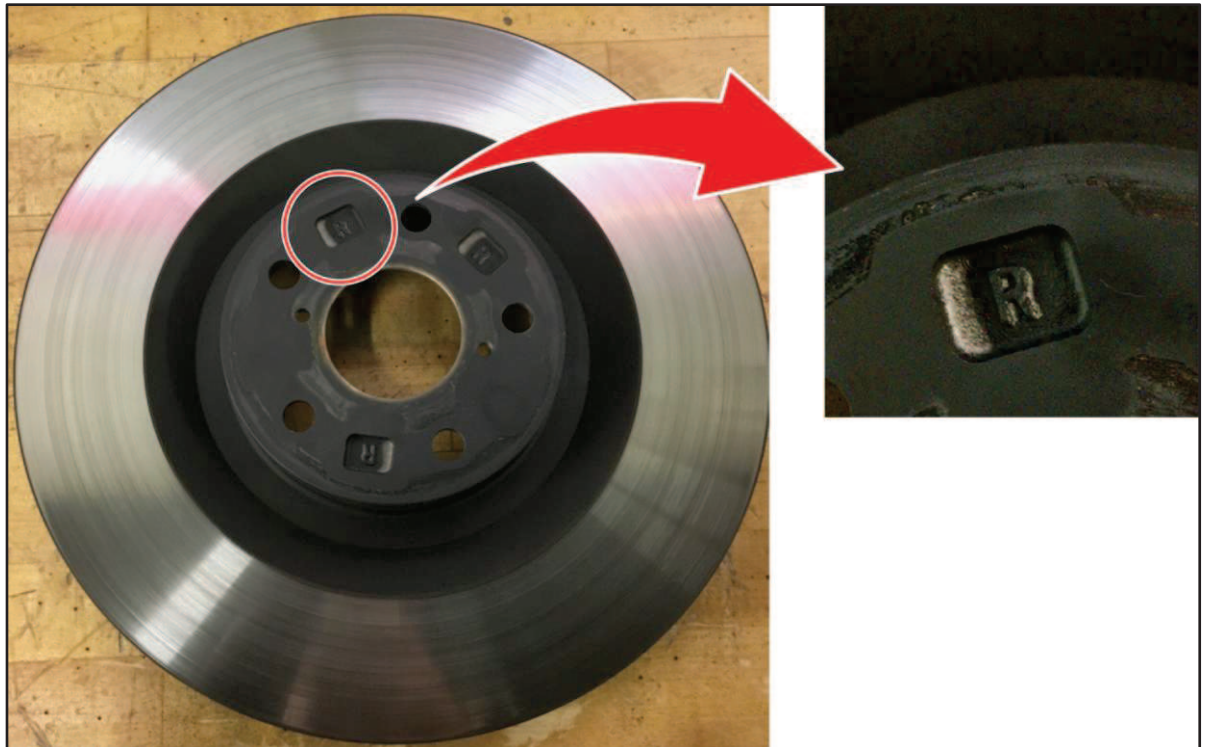
Refer to TIS, applicable model and model year Repair Manual:

- [2016](#) GS 200t:
Drivetrain – Axle and Differential – “Axle and Differential: Front Axle Hub: Installation”
- [2013](#) / [2014](#) / [2015](#) / [2016](#) GS 350:
Drivetrain – Axle and Differential – “Axle and Differential: Front Axle Hub: Installation”
- [2013](#) / [2014](#) / [2015](#) / [2016](#) GS 450h:
Drivetrain – Axle and Differential – “Axle and Differential: Front Axle Hub: Installation”
- [2016](#) RC 200t:
Drivetrain – Axle and Differential – “Axle and Differential: Front Axle Hub: Installation”
- [2015](#) / [2016](#) RC 350:
Drivetrain – Axle and Differential – “Axle and Differential: Front Axle Hub: Installation”

NOTE

NEW steel 1 piece rotors do NOT have paint marks as shown in the Repair Manual. They are marked with an “L” or an “R” to show which location to install.

Figure 6.



4. Test drive the vehicle to confirm that the clicking noise has been eliminated.