

COMBINATION METER REMOVAL



Tech Tips

- Use the same procedure for RHD and LHD vehicles.
- The procedure listed below is for LHD vehicles.

1. DISABLE AUTO TILT AWAY FUNCTION

- a. Disable the autoaway/return function by changing the customize parameter [Click here](#).

Note

Record the current customize parameter setting (whether the autoaway/return function is enabled or disabled) in order to restore the current setting after finishing the operation.

Tech Tips

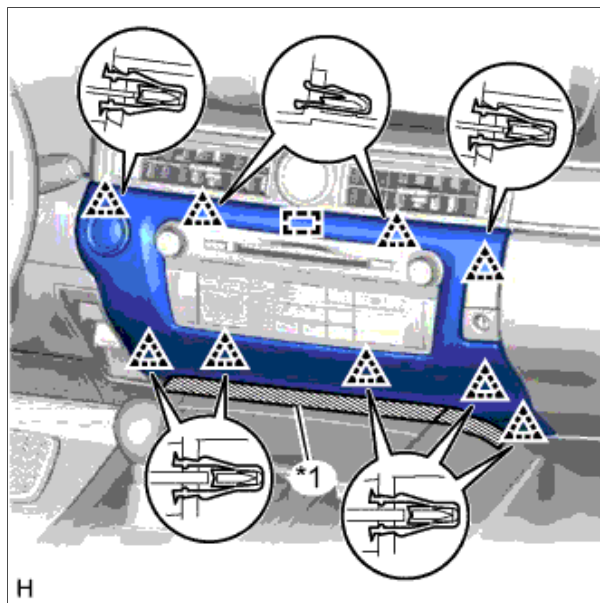
Performing the above operation causes the autoaway/return function to be disabled when the engine switch is turned off.

- b. Turn the engine switch on (IG). Operate the tilt and telescopic switch to fully extend and lower the steering column assembly.

- c. Turn the engine switch off.

2. REMOVE CENTER INSTRUMENT CLUSTER FINISH PANEL

- a. Put protective tape around the center instrument cluster finish panel.
- b. Detach the 9 clips and guide.
- c. Disconnect the connector and remove the center instrument cluster finish panel.

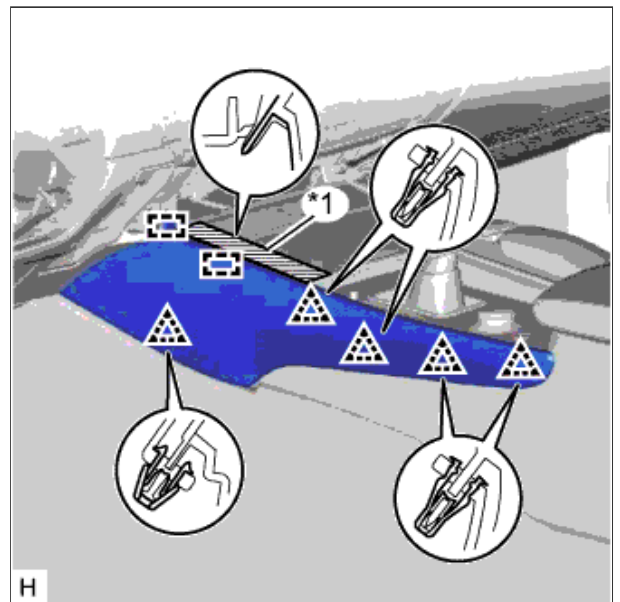


Text in Illustration

*1	Protective Tape
----	-----------------

3. REMOVE INSTRUMENT PANEL FINISH PANEL END LH

- a. Put protective tape around the instrument panel finish panel end LH.
- b. Detach the 5 clips and 2 guides and remove the instrument panel finish panel end LH.

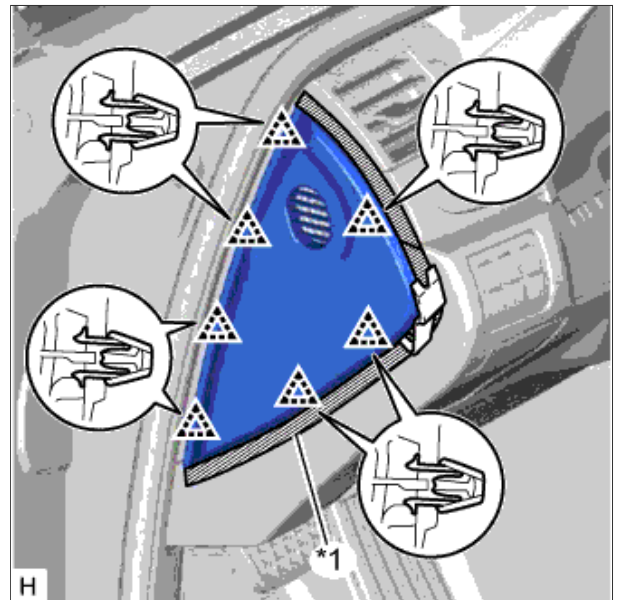


Text in Illustration

*1	Protective Tape
----	-----------------

4. REMOVE INSTRUMENT SIDE PANEL LH

- a. Put protective tape around the instrument side panel LH.
- b. Using a moulding remover, detach the 7 clips and remove the instrument side panel LH.

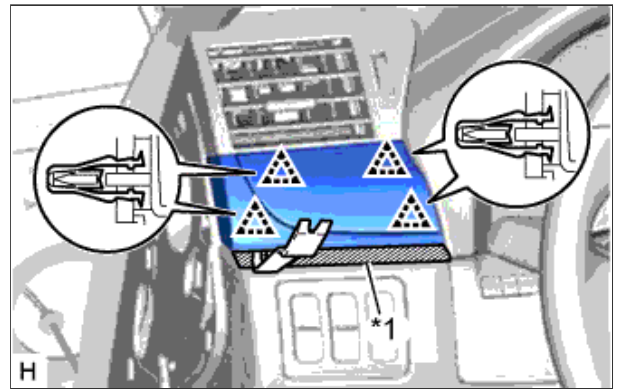


Text in Illustration

*1	Protective Tape
----	-----------------

5. REMOVE NO. 1 INSTRUMENT PANEL GARNISH SUB-ASSEMBLY

- a. Put protective tape around the No. 1 instrument panel garnish sub-assembly.
- b. Using a moulding remover, detach the 4 clips and remove the No. 1 instrument panel garnish sub-assembly.

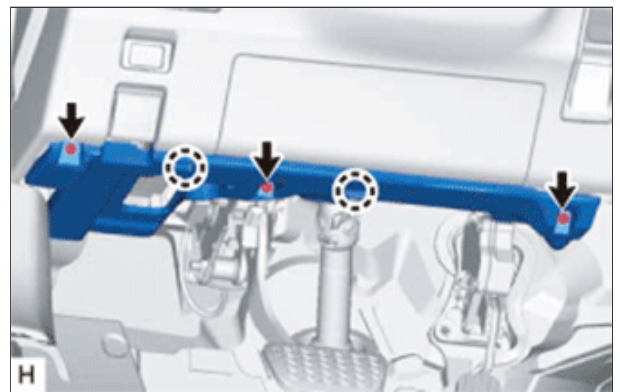


Text in Illustration

*1	Protective Tape
----	-----------------

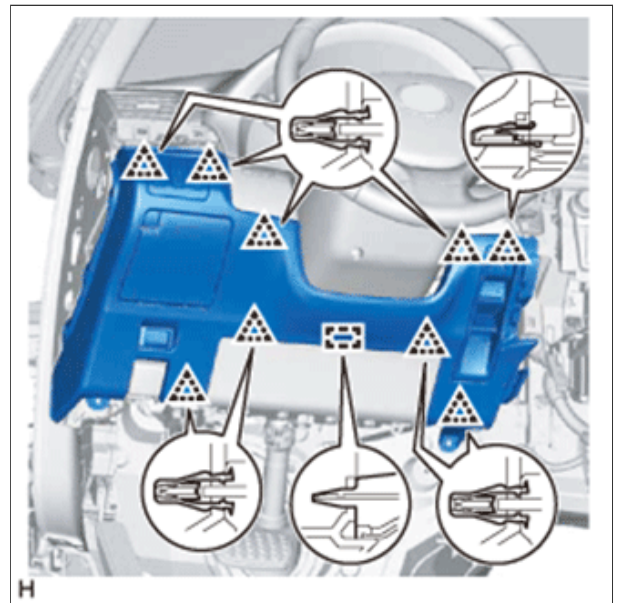
6. REMOVE NO. 1 INSTRUMENT PANEL UNDER COVER SUB-ASSEMBLY

- a. Remove the 3 screws <A>.
- b. Detach the 2 claws.
- c. Disconnect the connectors, detach the clamp and remove the No. 1 instrument panel under cover sub-assembly.



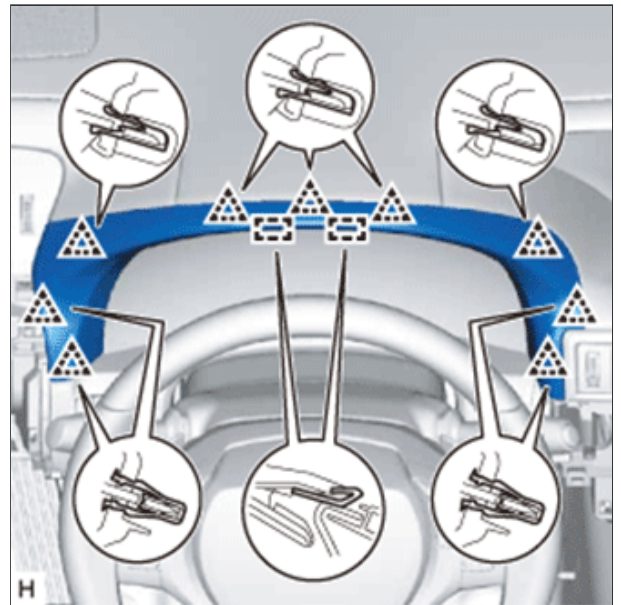
7. REMOVE NO. 1 INSTRUMENT PANEL SAFETY PAD SUB-ASSEMBLY

- a. Detach the 9 clips and guide.
- b. Disconnect the connectors and remove the No. 1 instrument panel safety pad sub-assembly.



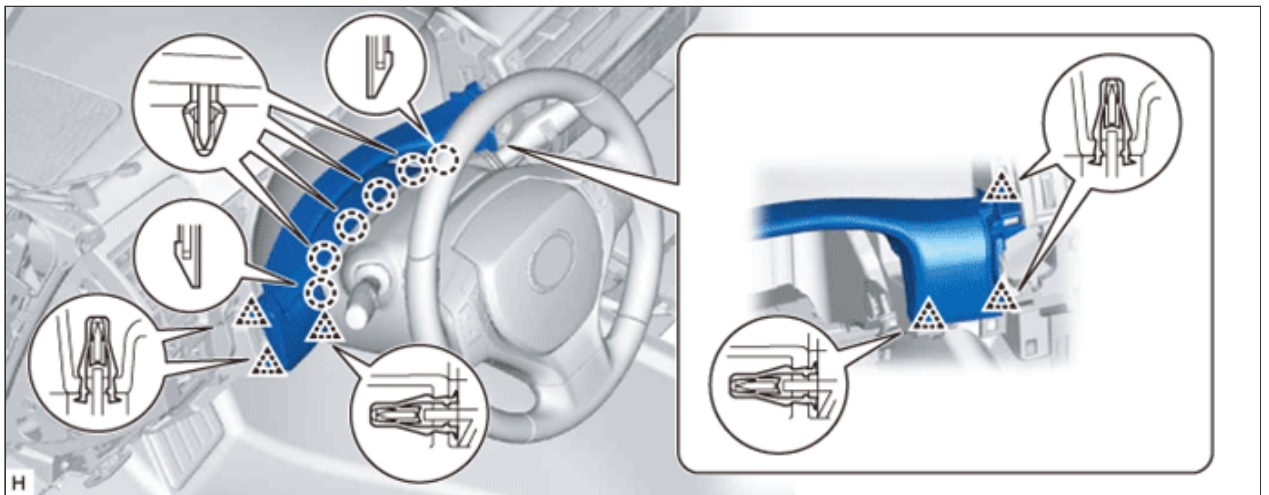
8. REMOVE INSTRUMENT CLUSTER FINISH PANEL ASSEMBLY

- a. Detach the 9 clips and 2 guides and remove the instrument cluster finish panel assembly.



9. REMOVE INSTRUMENT CLUSTER FINISH PANEL SUB-ASSEMBLY

- a. Detach the 6 clips and 6 claws.
- b. Disconnect the connectors and remove the instrument cluster finish panel sub-assembly.



10. REMOVE COMBINATION METER ASSEMBLY

- a. Remove the 4 screws.
- b. Disconnect the connectors, detach the clamp and remove the combination meter assembly.

