

CHASSIS

9901N-05

ON-VEHICLE INSPECTION

1. INSPECT STEERING LINKAGE

- (a) Check the steering wheel free play (see page 50-3).
- (b) Check the steering linkage for looseness or damage.
 - (1) Check that the tie rod ends do not have excessive play.
 - (2) Check that the dust seals and boots are not damaged.
 - (3) Check that the boot clamps are not loose.

2. INSPECT STEERING GEAR HOUSING OIL

- (a) Check the steering gear housing for oil leakage.

If leakage is found, check and repair the cause.

3. INSPECT BALL JOINTS AND DUST COVERS

- (a) Inspect the ball joints for excessive looseness.
- (b) Check the dust cover for damage.

4. INSPECT DRIVE SHAFT BOOTS

- (a) Check the drive shaft boots for clamp looseness, oil leakage or damage. Tighten bolt looseness.

5. CHECK OIL LEVEL IN TRANSFER AND DIFFERENTIAL

- (a) Remove the filler plug and feel inside the hole with your finger. Check that the oil comes to within 5 mm (0.20 in.) from the bottom edge of the hole.

If the level is low, add oil until it begins to run out of the filler hole, replace as necessary.

6. CHECK FLUID LEVEL IN AUTOMATIC TRANSMISSION (See page 40-2)

7. REPACK FRONT WHEEL BEARINGS AND DRIVE SHAFT BUSHING GREASE

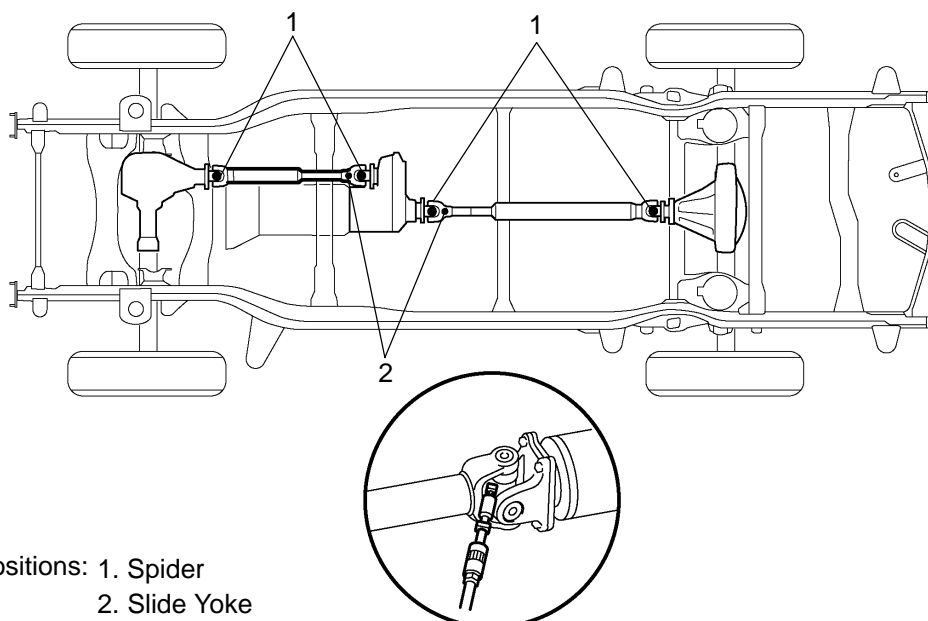
- (a) Change the front wheel bearing grease (see page 30-28).
- (b) Repack the drive shaft bushing grease (see page 30-19).

8. LUBRICATE PROPELLER SHAFT AND TIGHTEN BOLTS

- (a) Lubricate propeller shaft, referring to the lubrication chart. Before pumping in grease, wipe off any mud and dust on the grease fitting.

Grease grade:

Lithium base chassis grease (NLGI No. 2)



Lubricating Positions: 1. Spider
2. Slide Yoke

Y

D30371

- (b) Tighten the bolts for propeller shaft (see page [30-12](#)).
- 9. **ROTATE TIRES (See page [28-1](#))**