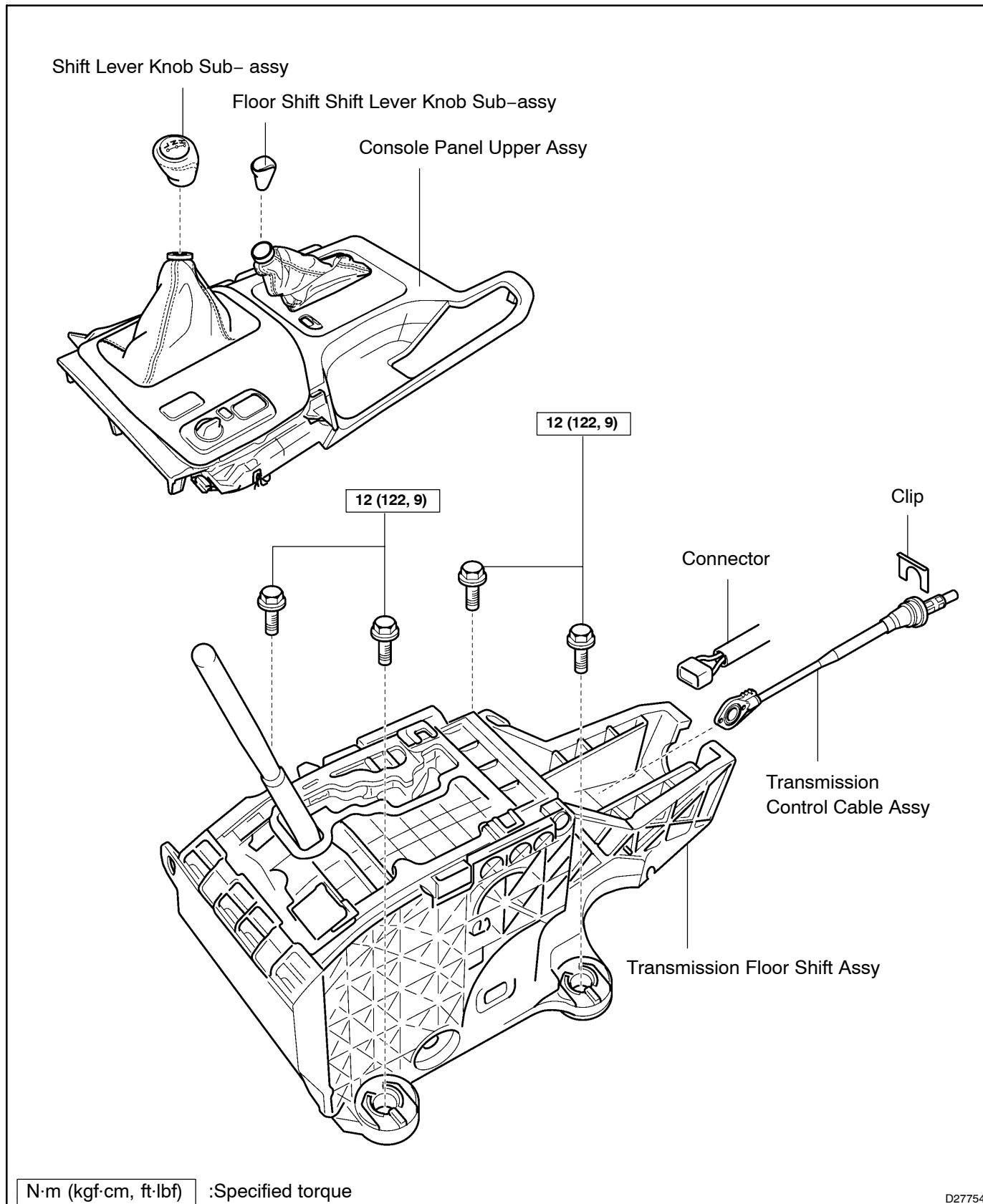


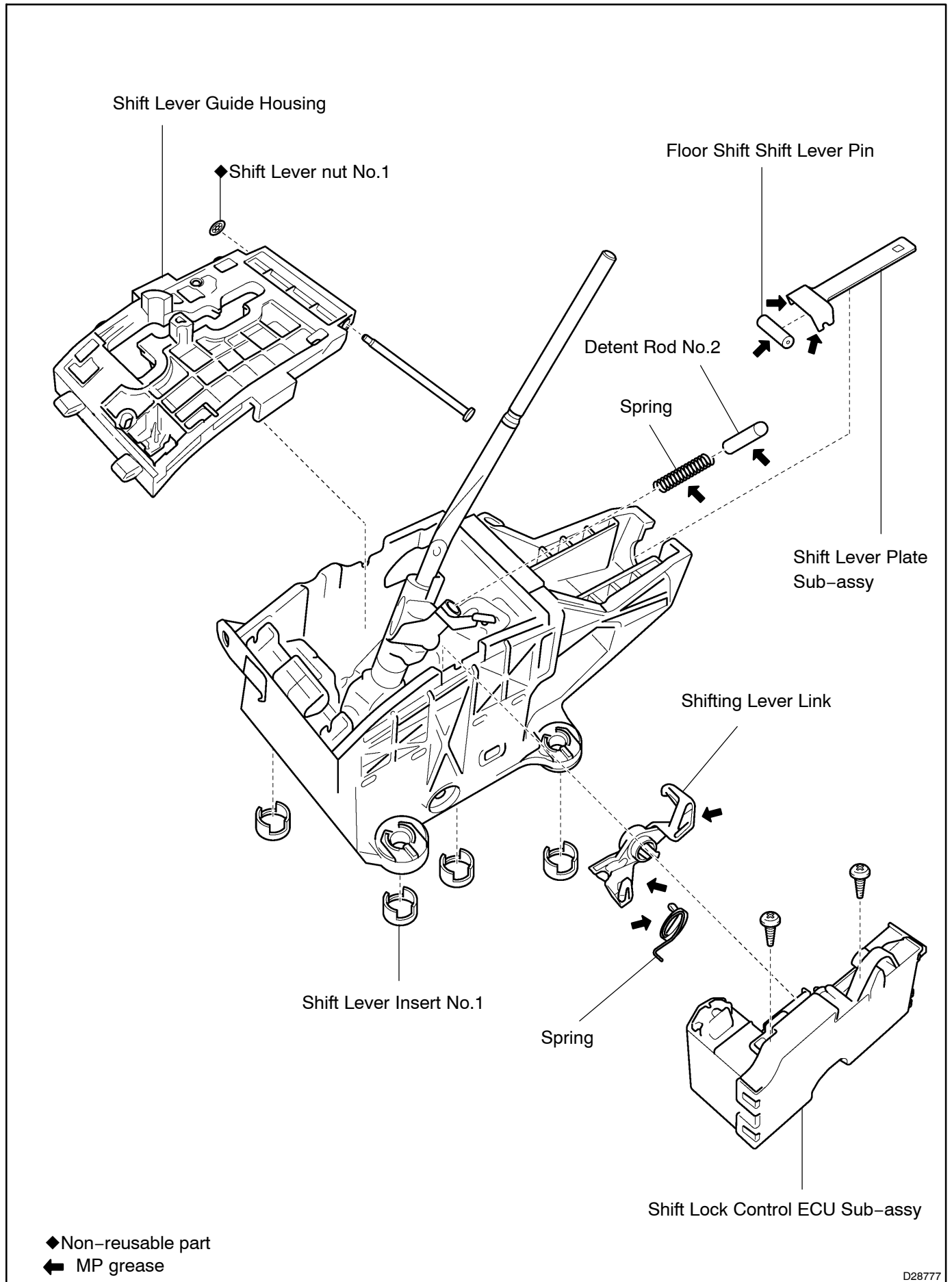
FLOOR SHIFT ASSY COMPONENTS

400Y0-03



N·m (kgf·cm, ft·lbf) : Specified torque

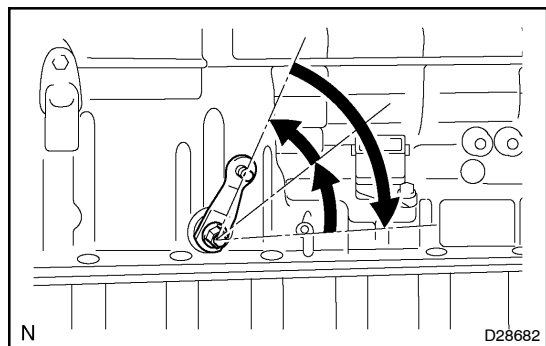
D27754



ADJUSTMENT

1. INSPECT SHIFT LEVER POSITION

- When shift from P to R position only with ignition switch ON and depress brake pedal, make sure that the shifting lever moves smoothly and can be moderately operated.
- When starting engine, make sure that the vehicle moves forward when shifting from N to D position and moves rearward when shifting to R position.



2. ADJUST SHIFT LEVER POSITION

- Loosen the nut. (1 mm MAX)
- Be sure to position the outer lever of the transmission in N position.
- Put the shift lever in N position, and fasten the shift cable temporarily.
- Push the shift cable end into the rear side of the vehicle approx. 1 kgf of force and then fasten the shift cable completely with the specified torque.

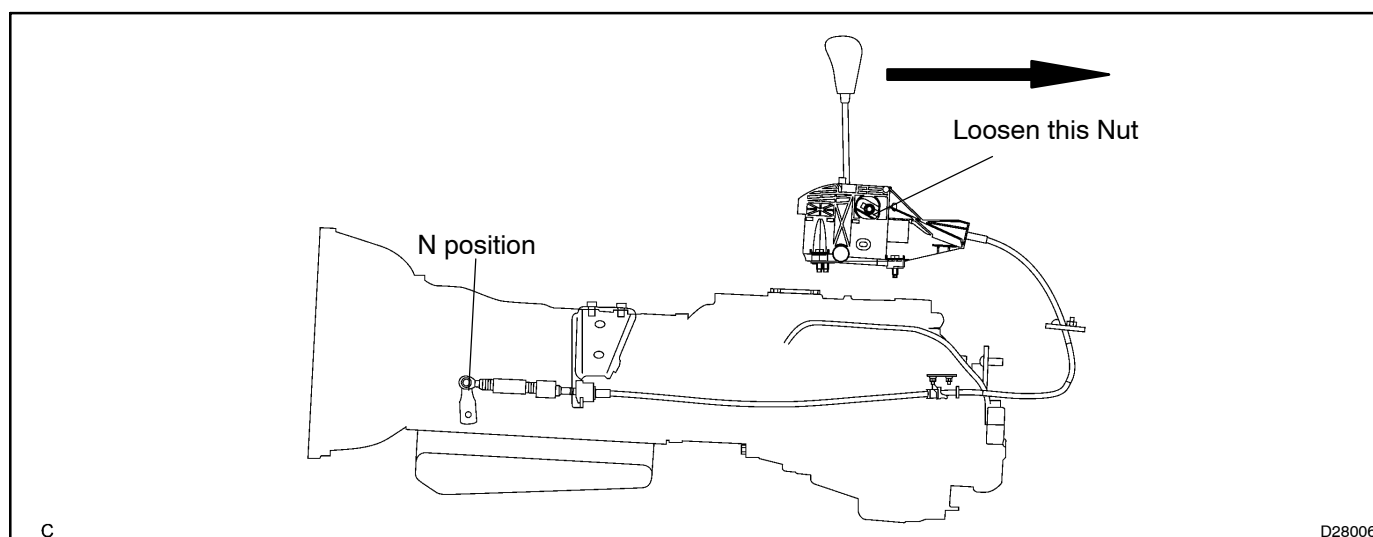
Torque: 12 N·m (122 kgf·cm, 9.0 ft·lbf)

NOTICE:

Put the shift lever in N position, and check that shifting to D position has less looseness than shifting it to P position.

HINT:

- Hands can be released after pushing into the shift cable end.
- Perform the final fastening so as not to move the shift cable as much as possible.

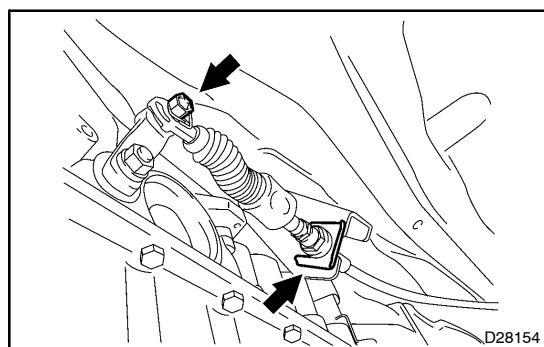


TRANSMISSION CONTROL CABLE ASSY (ATM)

400XZ-03

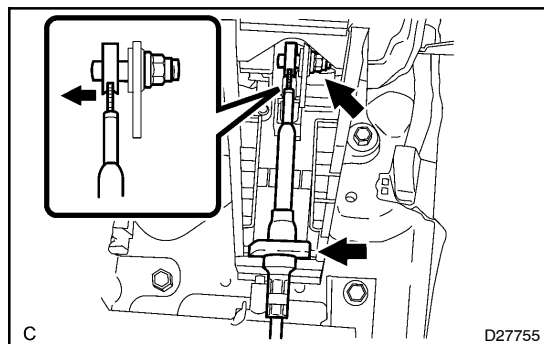
REPLACEMENT

1. SEPARATE BATTERY NEGATIVE TERMINAL
2. REMOVE SHIFT LEVER KNOB SUB-ASSY (See page 40-39)
3. REMOVE SHIFT LEVER KNOB SUB-ASSY (See page 40-39)
4. REMOVE CONSOLE UPPER PANEL GARNISH NO.1 (See page 71-13)
5. REMOVE CONSOLE UPPER PANEL GARNISH NO.2 (See page 71-13)
6. REMOVE CONSOLE PANEL UPPER (See page 71-13)
7. REMOVE CONSOLE PANEL UPPER REAR (See page 71-13)



8. SEPARATE TRANSMISSION CONTROL CABLE ASSY

- (a) Remove the nut and clip, separate the transmission control cable assy from the transmission control cable bracket.



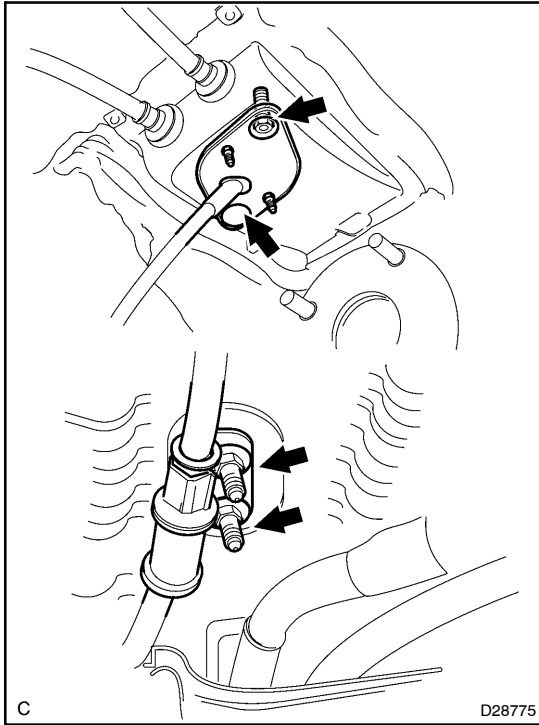
- (b) Remove clip, separate the transmission control cable assy from the floor shift lever assy.

HINT:

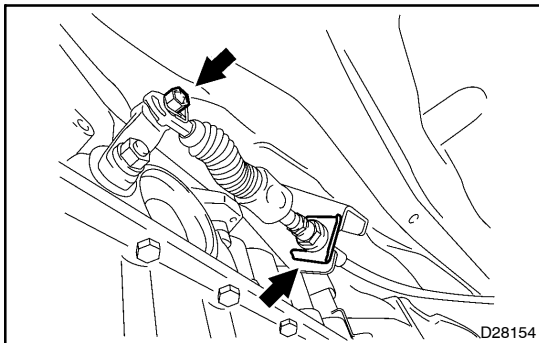
When the transmission control cable end is pressed, it can be removed from the floor shift lever.

NOTICE:

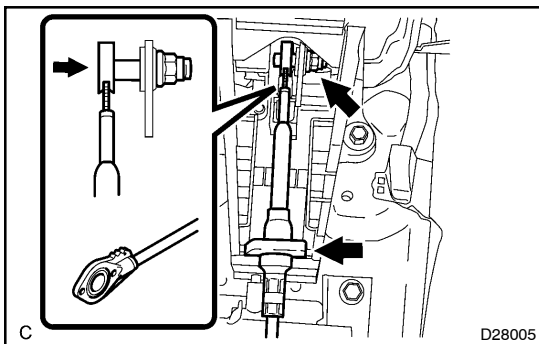
The nut may be loosened (up to approx. 1 mm), however, never remove it.



- 9. REMOVE TRANSMISSION CONTROL CABLE ASSY**
 (a) Remove the 4 nuts and pull out the transmission control cable assy.



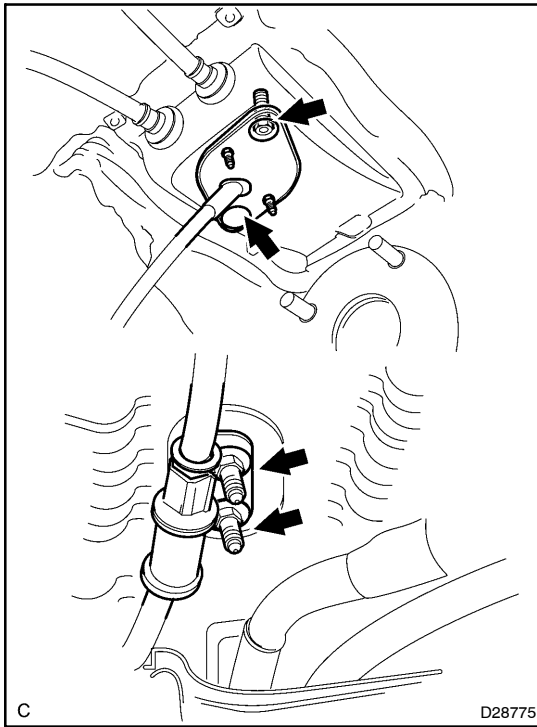
- 10. INSTALL TRANSMISSION CONTROL CABLE ASSY**
 (a) Connect the transmission control cable assy with the nut and clip from the transmission control cable bracket.
 (b) Pull in the transmission control cable assy to the body.



- (c) Connect the transmission control cable assy with the nut clip, from the floor shift lever assy.
Torque: 12 N·m (122 kgf·cm, 9 ft·lbf)

NOTICE:

- **Protrusion facing upward.**
- **When the nut is remove, be sure to tighten the nut.**



- (d) Install the transmission control cable assy with the 4 nuts.
Torque: 5.0 N·m (51 kgf·cm, 40 in·lbf)

11. **INSTALL CONSOLE PANEL UPPER REAR**
12. **INSTALL CONSOLE PANEL UPPER**
13. **INSTALL CONSOLE UPPER PANEL GARNISH NO.1**
14. **INSTALL CONSOLE UPPER PANEL GARNISH NO.2**
15. **INSTALL SHIFT LEVER KNOB SUB-ASSY (See page 40-39)**
16. **INSTALL SHIFT LEVER KNOB SUB-ASSY (See page 40-39)**
17. **ADJUST SHIFT LEVER POSITION (See page 40-45)**
18. **INSPECT SHIFT LEVER POSITION (See page 40-45)**