



Moon Roof Stuck/Improper Operation

Applicability

YEAR(S)	MODEL(S)	ADDITIONAL INFORMATION
2003 – 2008	GX470	

Introduction

Some customers may experience moon roof improper operation, such as:

- The moon roof does not close from its fully open position (an improper jam protection operation occurs).
- The moon roof is stuck due to a difference of alignment between the right and left parts of the moon roof.
- Sliding parts are stuck due to hardened grease.

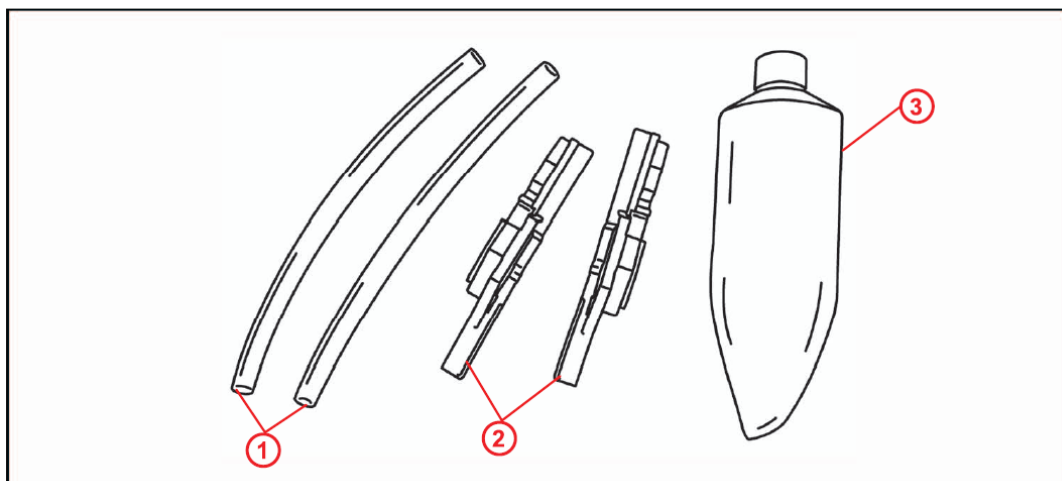
To correct these conditions and enhance serviceability, a new wind deflector link repair kit is now available as a separate service part.

Parts Information

PREVIOUS PART NUMBER	CURRENT PART NUMBER	PART NAME	QTY
N/A	63207-35040	Base Sub-assembly, Roof Window Balancer (Repair Kit)	1

Kit Contents

Figure 1.



1	Tubes
2	Wind Deflector Guide Rail Holders
3	Grease

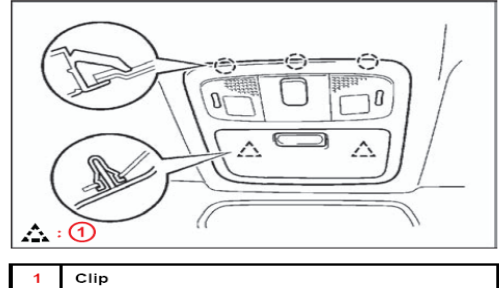
Repair Procedure

NOTE

Perform the same procedure for both the RH and LH sides.

1. Remove the gear assembly.
 - A. Open the moon roof approximately 75% and then remove the ignition key.
 - B. Release the two (2) metal clips (behind the sunglass holder) by gently pulling down the front of the map light assembly.

Figure 2.

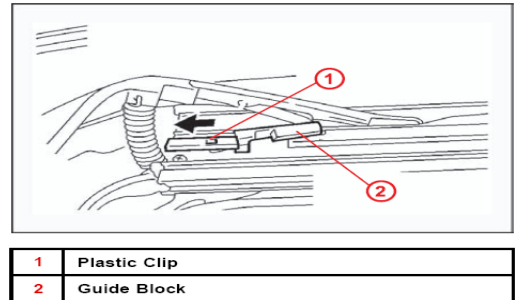


- C. Disconnect the connector and remove the map light assembly.

Repair Procedure (Continued)

- A. Using a flathead screwdriver, hold down the guide block release lever and push the plastic clip forward.

Figure 4.



- B. Slide the guide block backwards and out. Repeat for the other side and remove the wind deflector.

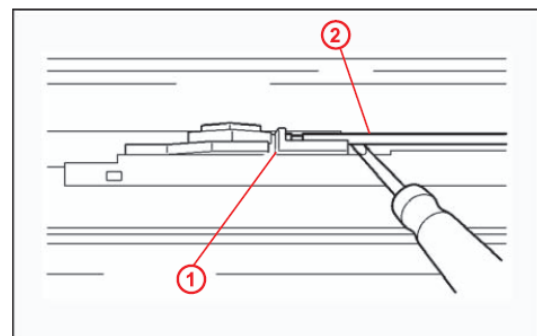
NOTE

To prevent breakage of the guide block release lever when the outside temperature is below 40° F (4° C), use a heat gun to raise the temperature of the guide block and surrounding aluminum housing to at least 65° F (18° C). Be careful NOT to damage components or paint with the heat gun.

3. Disconnect the wind deflector rod.

- A. Place a screwdriver against the rail, in the notch area as shown in the illustration, and pry the rod to disconnect it.

Figure 5.

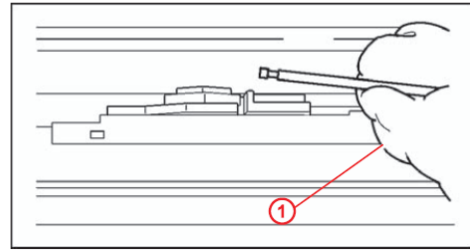


1	Holder
2	Rod

Repair Procedure (Continued)

- B. Secure the rod with a piece of cloth. Place the cloth between the rod and track to keep it out of the way.

Figure 6.

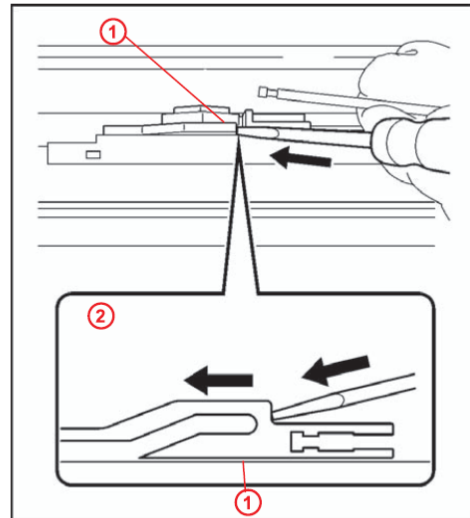


1	Cloth
---	-------

- 4. Remove the moon roof wind deflector guide rail holder.

- A. Place a flathead screwdriver against the stepped portion of the holder and lightly tap the screwdriver, using a hammer, to release the holder.
- B. Move the holder toward the front of the vehicle by pushing it with the screwdriver and remove it from the rail.

Figure 7.



1	Holder
2	Cross Section of Holder

Repair Procedure (Continued)

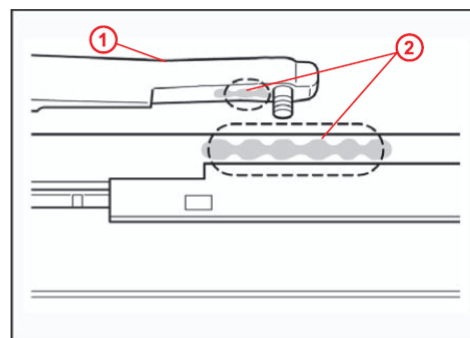
- 5. Replace the grease.

- A. Using a piece of cloth or scraper, remove the old grease from the holder-sliding surface on the rail and the deflector arm.

NOTE

Remove the grease on both the RH and LH sides.

Figure 8.



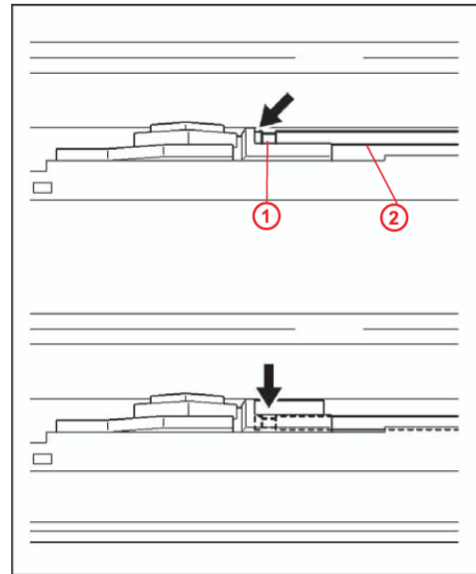
1	Deflector Arm
2	Old Grease

- B. Install the NEW holder (P/N 63257-35040/50, included in repair kit P/N 63207-35040) to the rail.

Repair Procedure (Continued)

- (1) Push the holder onto the end of the rod.
- (2) Push the rod into the holder.

Figure 9.

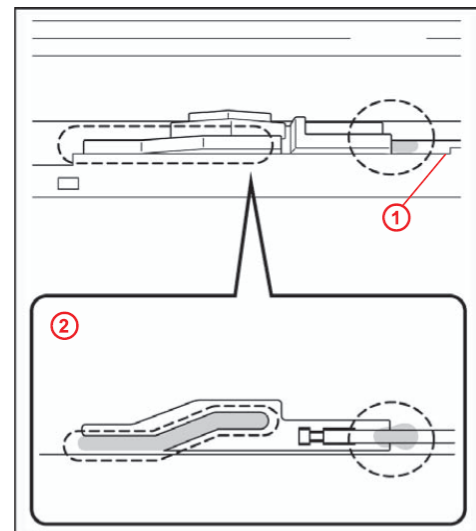


1	Holder
2	Rod

Repair Procedure (Continued)

- C. Apply grease (P/N 09170–35010, included in the repair kit) to the contact surface between the holder, the rail, and the groove (deflector arm installation portion).

Figure 10.



1	Holder
2	Rod

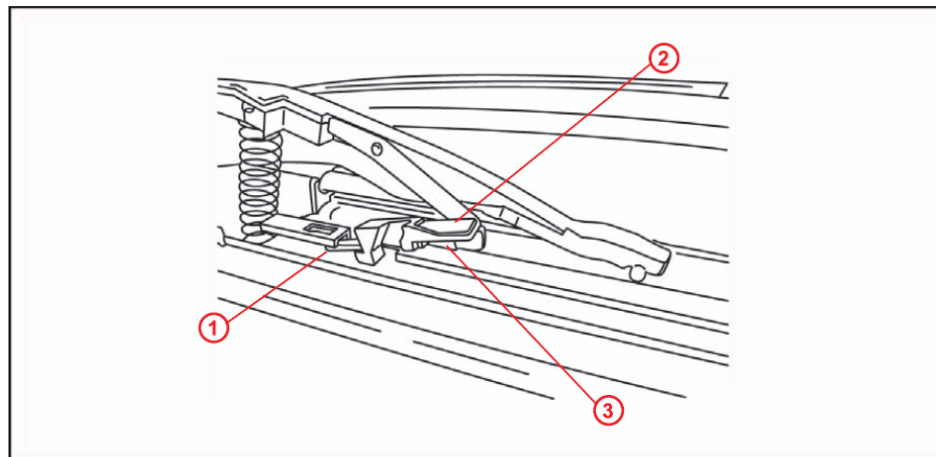
6. Install the roof wind deflector by performing the removal procedure in the reverse order.

NOTE

Install the front tab first, then slide back, and snap into position.

Repair Procedure (Continued)

Figure 11.



1	Slide Forward
2	Push Down
3	Slide Back to Lock

That is the end of the procedure. Once you have done it it not as complicated as it seems.

Cheers

Mann777