

MIL "ON" DTC P2610

Service Category Engine/Hybrid System

Section Engine Control

Market USA

Lexus Supports
ASE Certification 

Applicability

YEAR(S)	MODEL(S)	ADDITIONAL INFORMATION
2014 - 2016	GX460	

Introduction

Some 2014 – 2016 model year GX460 vehicles may exhibit a MIL "ON" condition with Diagnostic Trouble Code (DTC) P2610 present, indicating an ECM/PCM Engine OFF Timer Performance concern. The Engine Control Module (ECM) logic has been modified to reduce the possibility of this condition. Please follow the Repair Procedure below to address this condition.

Warranty Information

OP CODE	DESCRIPTION	TIME	MODEL YEAR	OFP	T1	T2
EG1612	Reprogram ECM (PCM)	0.4	2014 – 2015	89661-60W10 89661-60W11	8A	99
			2016	89661-60U20		

APPLICABLE WARRANTY

- This repair is covered under the Lexus Federal Emission Warranty. This warranty is in effect for 96 months or 80,000 miles, whichever occurs first, from the vehicle's in-service date.
- Warranty application is limited to occurrence of the specified condition described in this bulletin.

MIL "ON" DTC P2610

Parts Information

MODEL YEAR	PART NUMBER		PART NAME	QTY
	PREVIOUS	NEW		
2014 – 2015	89661-60W10 89661-60W11	89661-60W12	Computer, Engine Control (ECM)	–
2016	89661-60U20	89661-60U21		–
–	00451-00001-LBL		Authorized Modification Labels	1

NOTE

- The ECM (PCM) should NOT be replaced as part of the Repair Procedure.
- Authorized Modification Labels may be ordered in packages of 25 from the Materials Distribution Center (MDC) through *Dealer Daily – Dealer Support Materials Orders*.

Required Tools & Equipment

REQUIRED EQUIPMENT	SUPPLIER	PART NUMBER	QTY
Techstream 2.0*	ADE	TS2UNIT	1
Techstream Lite		TSLITEPDLR01	
Techstream Lite (Green Cable)		TSLP2DLR01	

NOTE

- Only ONE of the Techstream units listed above is required.
- Software version 11.10.034 or later is required.
- Additional Techstream units may be ordered by calling Approved Dealer Equipment (ADE) at 1-800-368-6787.
- The Diagnostic Tester is NOT recommended for flash reprogramming. Please use Techstream or an approved J2534 interface to perform flash reprogramming updates. Visit techinfo.toyota.com for more information regarding J2534 reprogramming.



SPECIAL SERVICE TOOLS (SST)	PART NUMBER	QTY
GR8 Battery Diagnostic Station*	00002-MCGR8	1

NOTE

Additional SSTs may be ordered by calling 1-800-933-8335.

* Essential SST.

MIL "ON" DTC P2610

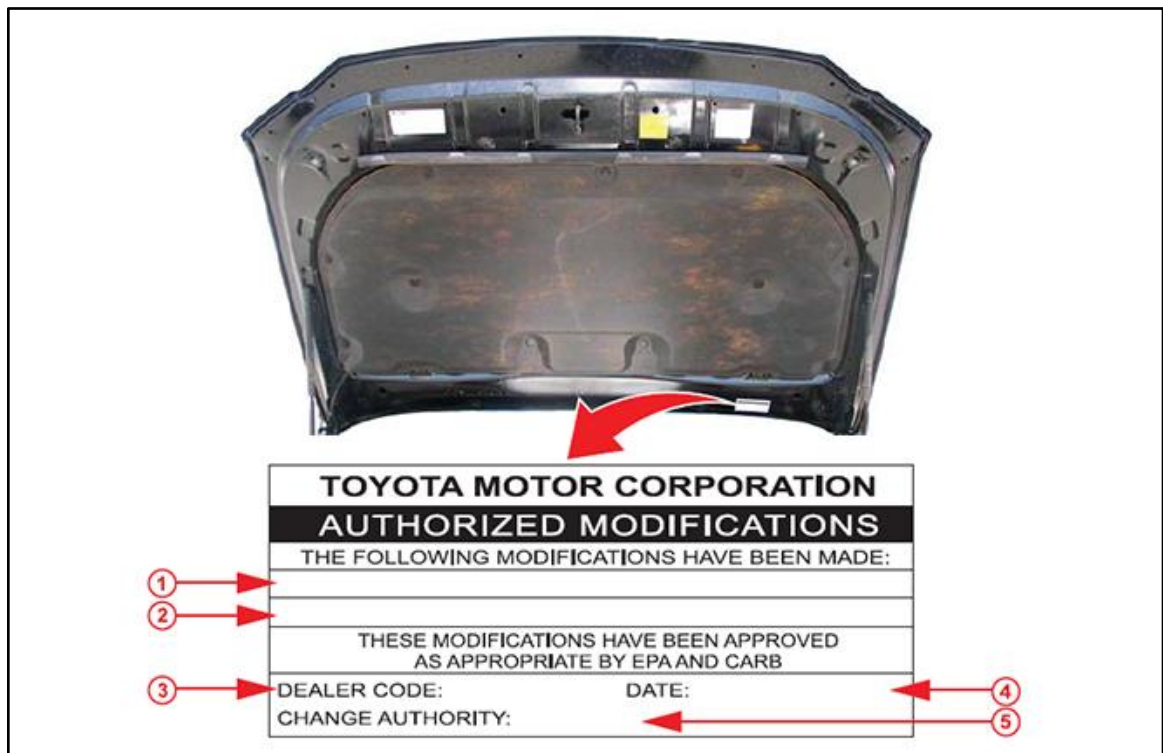
Calibration Information

MODEL YEAR	CALIBRATION ID	
	PREVIOUS	NEW
2014 – 2015	360Q9000 360Q9100	360Q9200
2016	360X8000	360X8100

Repair Procedure

- Using Techstream, check for stored DTCs. Confirm the following DTC is present:
P2610 – ECM/PCM Engine Off Timer Performance
- Check for the Authorized Modifications Label affixed to the vehicles in the location shown below. Confirm if the ECM (PCM) calibration has been updated. If the calibration ID listed is NOT the latest ECM (PCM) calibration – go to step 3. If the calibration ID listed IS the latest ECM (PCM) calibration, disregard this Service bulletin and continue repair via the Repair Manual.

Figure 1. Location of Authorized Modification Label for 2014 – 2016 GX 460



1	Replacement ECM (PCM) Part Number (i.e., 89661-60W12 or 89661-60U21)
2	New Calibration ID (i.e., 360Q9200 or 360X8100)
3	Dealer Code

4	Date Completed
5	This SB Number

MIL "ON" DTC P2610

Repair Procedure (Continued)

3. Flash reprogram the ECM (PCM).

NOTE

- The GR8 Battery Diagnostic Station **MUST** be used in Power Supply Mode to maintain battery voltage at 13.5 volts while flash reprogramming vehicle.
- For details on how to use the GR8 Battery Diagnostic Station, refer to the [GR8 Instruction Manual](#) located on the Technical Information System (TIS), *Diagnostics – Tools & Equipment – Battery Diagnostics*.

Follow the procedures outlined in Service Bulletin No. [L-SB-0021-14](#), "Techstream ECU Flash Reprogramming Procedure," and flash the ECM (PCM) with the NEW calibration file update.

4. Install the Authorized Modifications Label.
 - A. Using a permanent marker, enter the following information on the label:
 - ECM part number [*Refer to the **Parts Information** section for the **NEW PART NUMBER***]
 - Calibration ID(s) [*Refer to the **Calibration Information** section for the **NEW CALIBRATION ID***]
 - Dealer Code
 - Repair Date
 - Change Authority [**This bulletin number**]
5. Affix the Authorized Modifications Label to the vehicle at the location shown in Figure 1. The Authorized Modifications Label is available through the MDC, P/N 00451-00001-LBL.
6. Test drive the vehicle to confirm proper vehicle operation.