


Rattle Noise From 2nd Row Seat

Service Category Vehicle Interior

Section Seat

Market USA

Lexus Supports
ASE Certification 

Applicability

| YEAR(S) | MODEL(S) | ADDITIONAL INFORMATION |
|-------------|----------|------------------------|
| 2011 – 2012 | GX460 | |

Introduction

Some 2011–2012 MY GX 460 vehicles may exhibit a rattle type noise from the second row passenger side seat back cover area when driving over rough roads and bumps. This noise may be coming from a mass damper located under the seat back cover on the seat frame. A revised damper has been developed to address this condition.

Production Change Information

This TSIB applies to vehicles produced **BEFORE** the Production Change Effective VINs shown below.

| MODEL | PLANT | PRODUCTION CHANGE EFFECTIVE VIN |
|--------|--------|---------------------------------|
| GX 460 | Tahara | JTJBM7FX#C5040731 |
| | | JTJJM7FX#C5040734 |

Parts Information

| PREVIOUS PART NUMBER | CURRENT PART NUMBER | PART NAME | QTY |
|----------------------|---------------------|----------------------------------|-----|
| 71499-60020 | Same | Damper, Rear Seat Cushion Spring | 1 |

Warranty Information

| OP CODE | DESCRIPTION | TIME | OFF | T1 | T2 |
|---------|--------------------------|------|-------------|----|----|
| NV1041 | R&R Rear Seat Back Cover | 0.9 | 71499-60020 | 91 | 41 |

APPLICABLE WARRANTY

- This repair is covered under the Lexus Comprehensive Warranty. This warranty is in effect for 48 months or 50,000 miles, whichever occurs first, from the vehicle's in-service date.
- Warranty application is limited to occurrence of the specified condition described in this bulletin.

Rattle Noise From 2nd Row Seat

Required Tools & Equipment

| SPECIAL SERVICE TOOLS (SST) | PART NUMBER | QTY |
|-----------------------------|--------------------------------|-----|
| Plastic Pry Tool Set* | 00002-06000-01 | 1 |

* Essential SST.

NOTE

Additional SSTs may be ordered by calling 1-800-933-8335.

Repair Procedure

1. Verify condition. This rattle noise occurs due to insufficient insulation on the mass damper in the seat back. **Confirm by duplicating the noise, then removing the seat back to determine if the noise continues or not. If the noise is not coming from the mass damper, this TSIB does not apply.**
2. Follow repair procedures below once the type of seat has been identified. This C/M is applied only for split side Walk-in type.
Split Side Walk-in Type

HINT

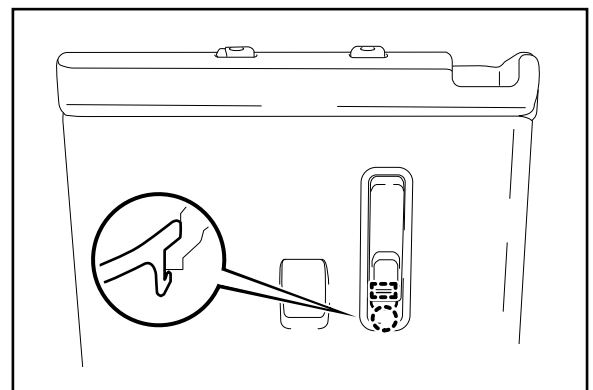
Damper is on right hand side of the seat.

3. Replace the seat damper.

Disassembly for 60/40 Split Side Walk-in Type Seat

1. Remove Rear Seat Cover Cap
 - Using a plastic pry tool, detach the claw and then remove the cover cap.

Figure 1.



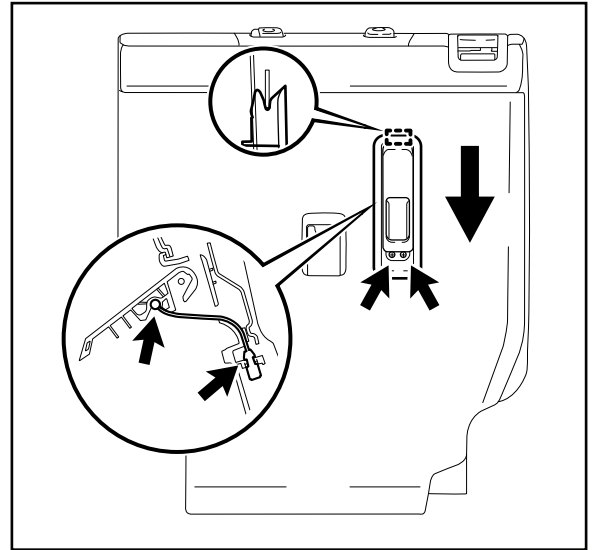
Rattle Noise From 2nd Row Seat

Repair Procedure

Disassembly for 60/40 Split Side Walk-in Type Seat (Continued)

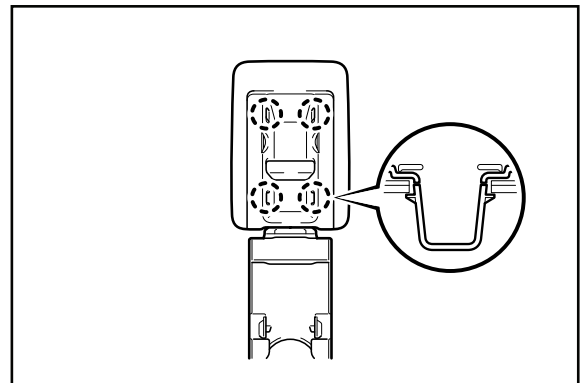
2. Remove rear center back lock control lever.
 - A. Remove the 2 screws.
 - B. Move the lever in the direction of the arrow to detach the guide and remove the lever.
 - C. Detach the cable clamp and disconnect the cable from the lever.

Figure 2.



3. Remove rear seat back cover.
 - A. Press the seat back lock release button to release the lock and fold down the seat back.
 - B. Using a plastic pry tool, detach the 4 claws and remove the cover.

Figure 3.



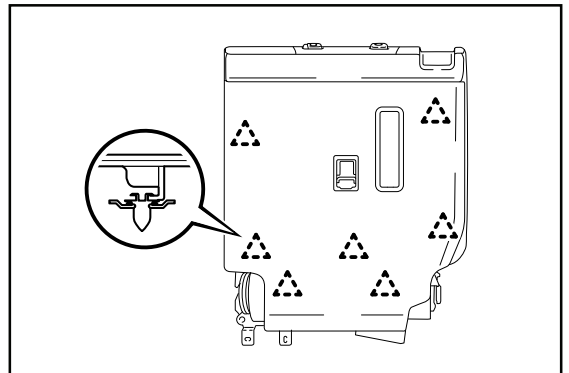
Rattle Noise From 2nd Row Seat

Repair Procedure

Disassembly for 60/40 Split Side Walk-in Type Seat (Continued)

4. Remove rear seat back board subassembly RH.
 - Using a clip remover, detach the 7 clips and remove the carpet.

Figure 4.



Rattle Noise From 2nd Row Seat

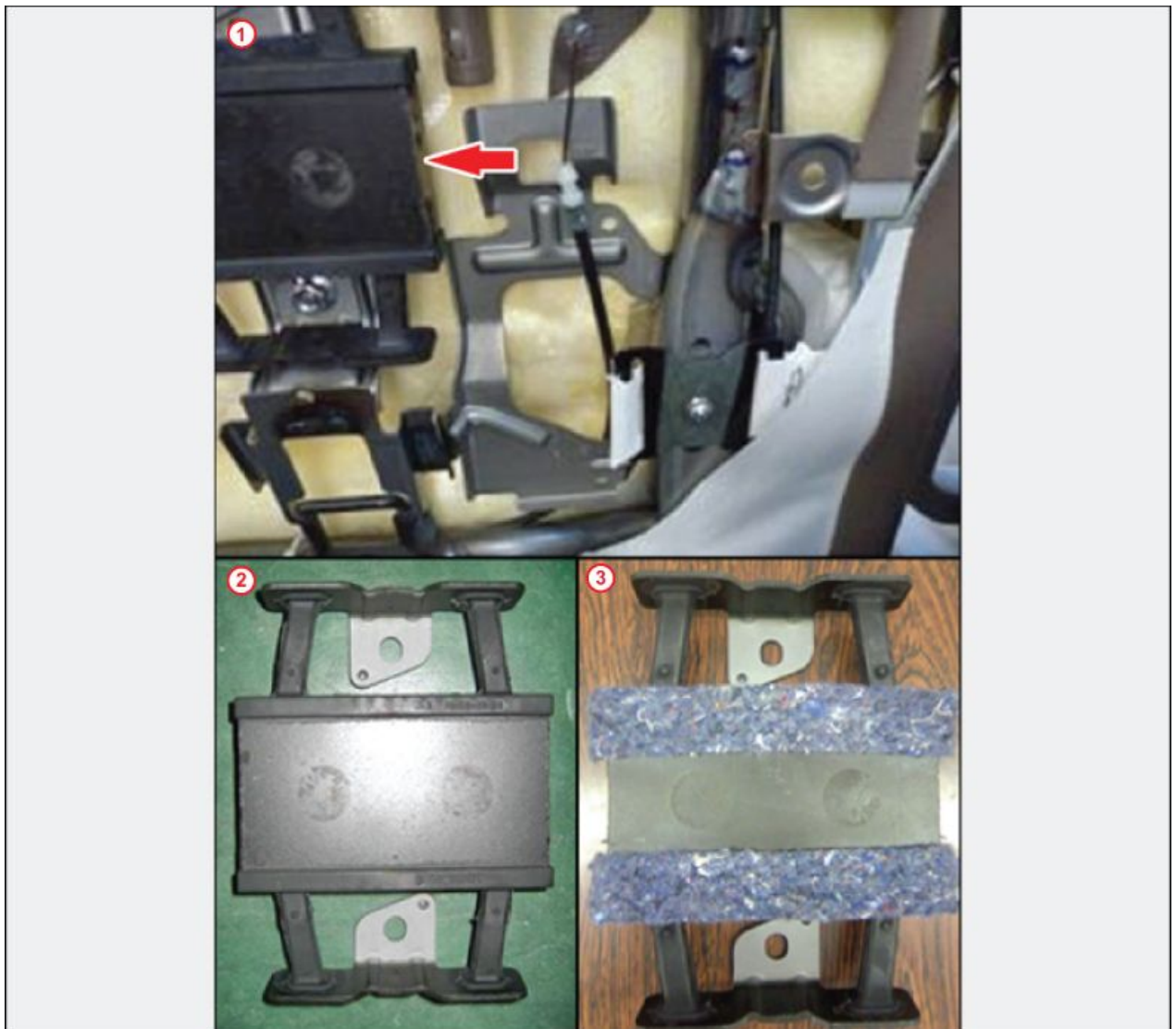
Repair Procedure (Continued)

Installation of Mass Damper

Upon seat back removal, locate damper pictured below, remove the two bolts securing the dampener and replace with new service part. See Figure 7.

Torque: 5.5 N*m (55 kgf*cm, 4 ft*lbf)

Figure 5.



| | |
|---|------------------|
| 1 | Damper Installed |
| 2 | Original Damper |

| | |
|---|------------|
| 3 | C/M Damper |
|---|------------|

Rattle Noise From 2nd Row Seat

Repair Procedure (Continued)

Reassembly for 60/40 Split Side Walk-in Type Seat

1. Install rear seat back board subassembly RH.
 - Attach the 7 clips to install the seat back board.
2. Install rear seat back cover.
 - Attach the 4 claws to install the cover.
3. Install rear center back lock control lever
 - A. Attach the cable clamp to connect the cable to the lever.
 - B. Move the lever in the direction of the arrow to attach the guide.
 - C. Install the lever with the 2 screws.

Figure 6.

