

# Front Bumper Cover Paint Peeling or Chipping

**Service Category** Vehicle Exterior

**Section** Paint/Coatings

**Market** USA

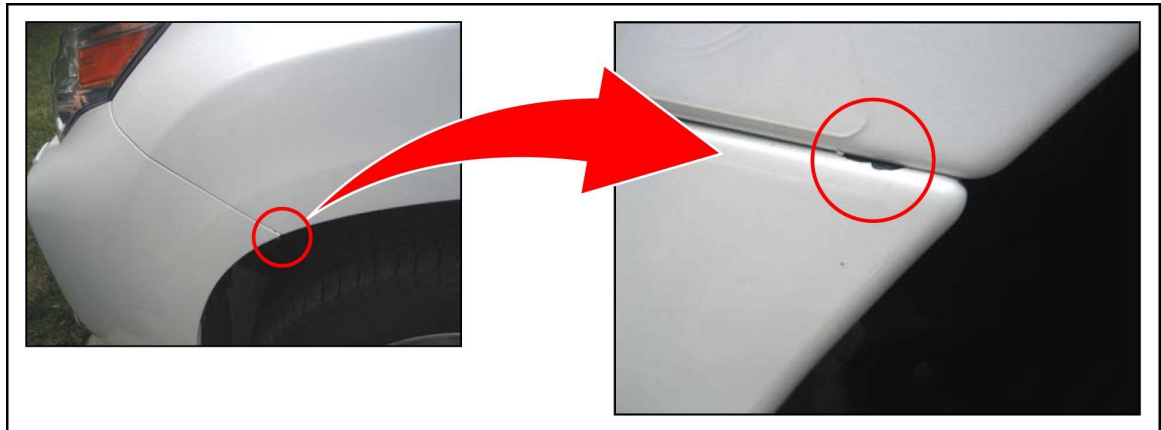
Lexus Supports  
ASE Certification 

## Applicability

YEAR(S)	MODEL(S)	ADDITIONAL INFORMATION
2010 – 2011	GX460	

## Introduction

Some 2010 – 2011 model year GX 460 vehicles may exhibit a condition where paint peels or chips on the front bumper cover. The paint may peel or chip on the left side of the bumper cover at or near the rear edge where the bumper cover and front fender meet. The following procedure has been developed to address this condition and increase the gap between the bumper cover and front fender.



## Production Change Information

This TSIB applies to vehicles produced **BEFORE** the Production Change Effective VINs shown below.

MODEL	GRADE	PRODUCTION CHANGE EFFECTIVE VIN
GX 460	Normal	JTJBM7FX#B5020694
	Premium	JTJJM7FX#B5020759

## Front Bumper Cover Paint Peeling or Chipping

### Warranty Information

OP CODE	DESCRIPTION	TIME	OFF	T1	T2
BD1098	Install Bumper Support Shim*	0.5	52119-6A96#	69	15

\* If bumper cover repainting is necessary, typical body shop sublet claim practice should be used for claiming preparation, repair, and painting of bumper cover. Use "PT" sublet type for repainting.

#### APPLICABLE WARRANTY

- This repair is covered under the Lexus Comprehensive Warranty. This warranty is in effect for 48 months or 50,000 miles, whichever occurs first, from the vehicle's in-service date.
- Warranty application is limited to occurrence of the specified condition described in this bulletin.

### Parts Information

PREVIOUS PART NUMBER	CURRENT PART NUMBER	PART NAME	QTY
N/A	52117-48020	Support, Fr Bumper, Upr	1

### Required Tools & Equipment

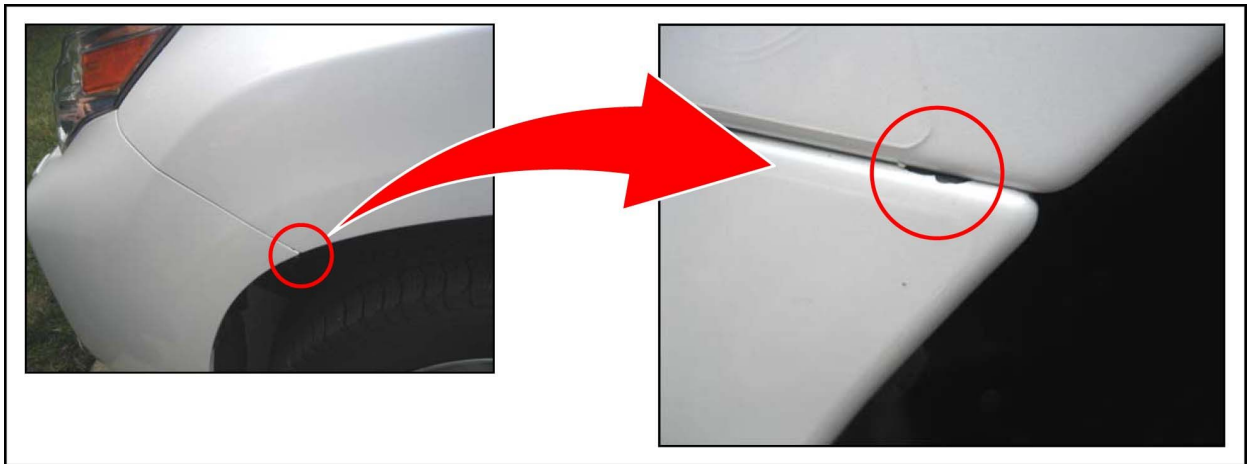
REQUIRED MATERIAL	PART NUMBER	QTY
3M™ General Purpose Adhesive Cleaner, or Equivalent	051135-08984 or 051135-08987	As Needed

## Front Bumper Cover Paint Peeling or Chipping

### Repair Procedure

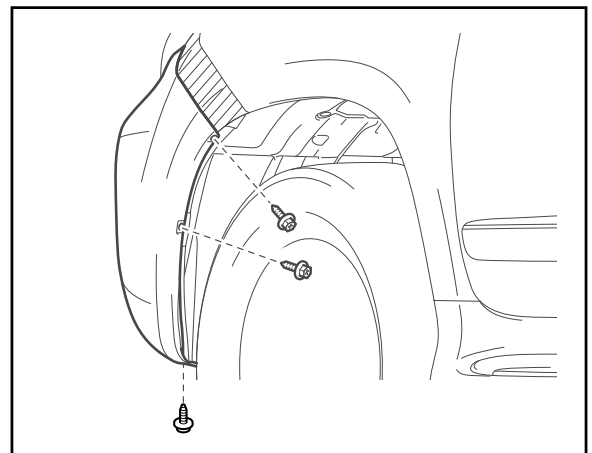
1. Confirm that the front bumper cover paint is peeling or chipping at the location indicated in Figure 1.

Figure 1.



- If the front bumper cover paint is peeling or chipping as indicated above, proceed to step 2.
  - If the front bumper cover paint is not peeling or chipping as indicated above, STOP. This TSIB does NOT apply.
2. Remove the 3 screws.

Figure 2.



## Front Bumper Cover Paint Peeling or Chipping

### Repair Procedure (Continued)

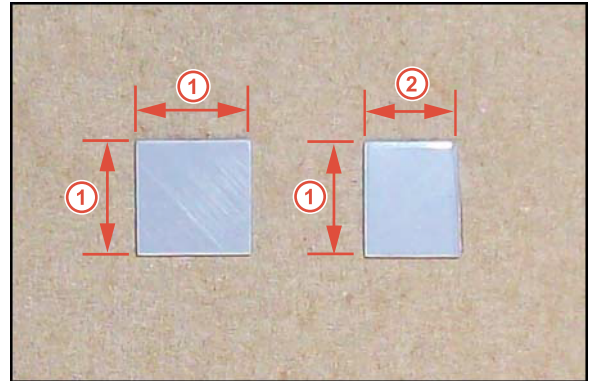
3. Prepare one support shim from P/N 52117-48020.

The original dimension of the shim is 10 x 10 mm (0.39 x 0.39 in.). Trim 2 mm (0.08 in.) off of one side of the shim so that the modified shim dimension is 10 x 8 mm (0.39 x 0.32 in.).

**Original Shim Dimension: 10 x 10 mm (0.39 x 0.39 in.)**

**Modified Shim Dimension: 10 x 8 mm (0.39 x 0.32 in.)**

Figure 3.



1	10 mm (0.39 in.)
2	8 mm (0.32 in.)

4. Prepare the inside of the left front bumper support at the location shown by cleaning with 3M™ General Purpose Adhesive Cleaner or equivalent.

Figure 4.



## Front Bumper Cover Paint Peeling or Chipping

---

### Repair Procedure (Continued)

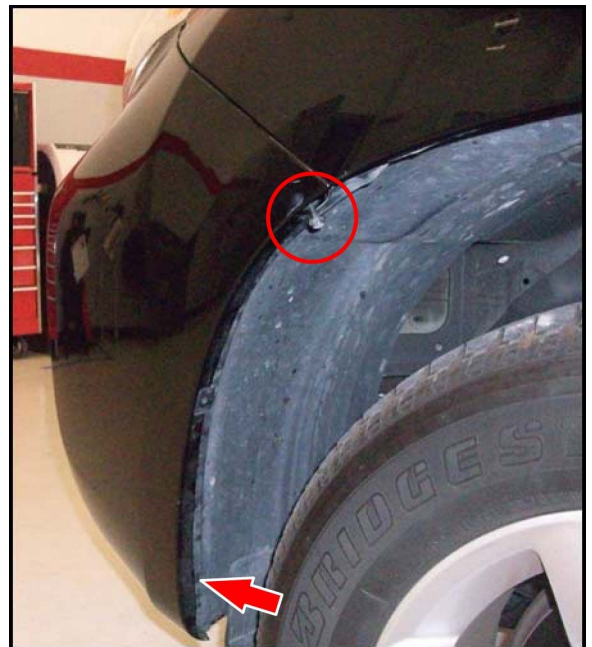
5. Install the modified shim to the front bumper support at the location indicated.

Figure 5.



6. Install and tighten the bumper cover screws.
  - A. Install and tighten the UPPER screw SLOWLY while firmly pressing forward on the bottom end of the bumper cover.

Figure 6.



## Front Bumper Cover Paint Peeling or Chipping

### Repair Procedure (Continued)

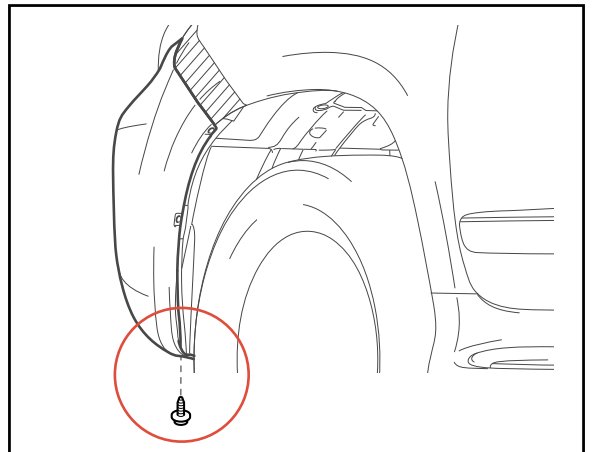
- B. Install and tighten the LOWER screw SLOWLY while firmly pressing forward on the bottom end of the bumper cover.

Figure 7.



- C. Install and tighten the bottom screw.

Figure 8.



## Front Bumper Cover Paint Peeling or Chipping

---

### Repair Procedure (Continued)

7. Ensure the gap between the bumper cover and front fender is greater than 0.1 mm.

**HINT**

If a piece of paper can be inserted in the gap between the bumper cover and front fender, the gap is OK.

- If the gap is OK, proceed to step 8.
- If the gap is NOT greater than 0.1 mm, replace the bumper cover.

Figure 9.



8. Repaint the affected area.