

CBI

Build guide Front bumper cuts and rock sliders and Badlands 12000 winch (photos for reference)

Videos (bumper and winch, must watch)

<https://www.youtube.com/watch?v=gXEai6JlyiY>

CBI

Bumper cut

<https://www.youtube.com/watch?v=BU5wb1X6ZiA>

Attach bumper

<https://www.youtube.com/watch?v=Lt1W43gHeK0>

Rock slider

<https://www.youtube.com/watch?v=ql1ACAtcrA>



## Rock sliders

- Start with driver side, most difficult
- watch video
- Tape on both top and bottom helps keep line straight
- 2.5 inch in the back (bottom of tape)



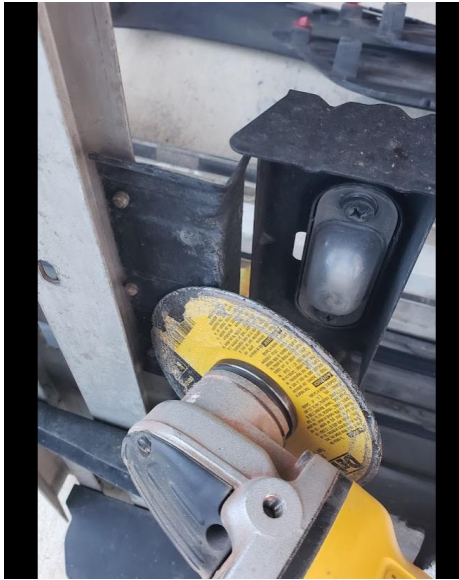
- 4.5 inches in front (bottom of tape)



•



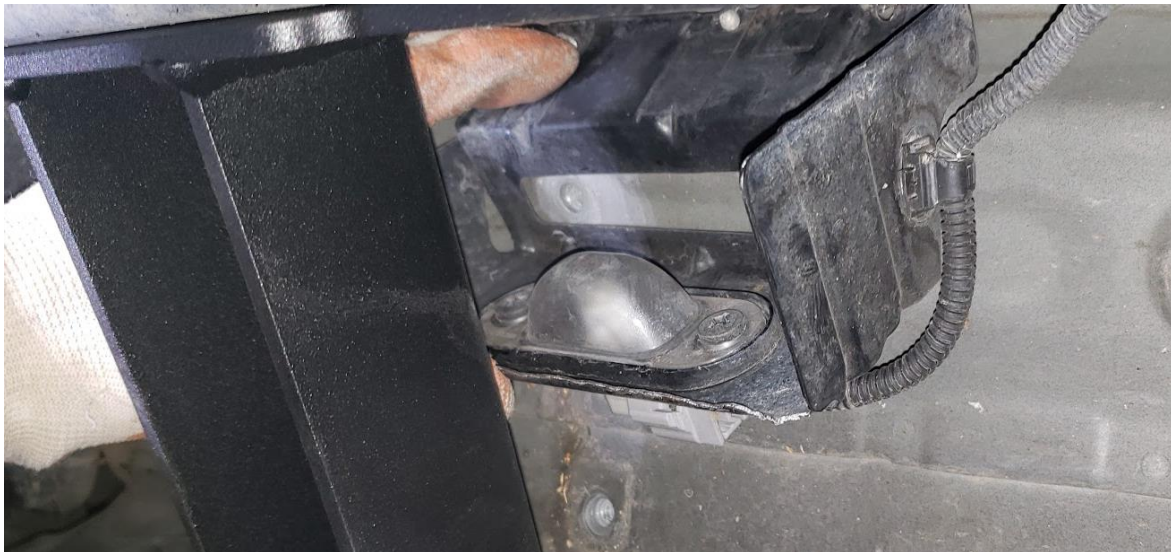
## SAVE RUNNING LIGHTS



- Cut off 3 binding post
- Trim short side with sheers



- Rotate 90 degrees mount with one bolt



- Zip tie wires as needed

## Bumper

- On each end 3 and half honeycombs 1 blank 2 open 0.5 open
- Use the bottoms of complete 3 honeycombs as tape line
- 3 complete elsewhere

## Bumper Sides

- Place tape on top first tracing the slight bump out (  $\frac{1}{4}$  inch)
- Place bottom tape helps keep things straight

Diagonal most difficult Tip is to not cut much and retape once bumper is test mounted





