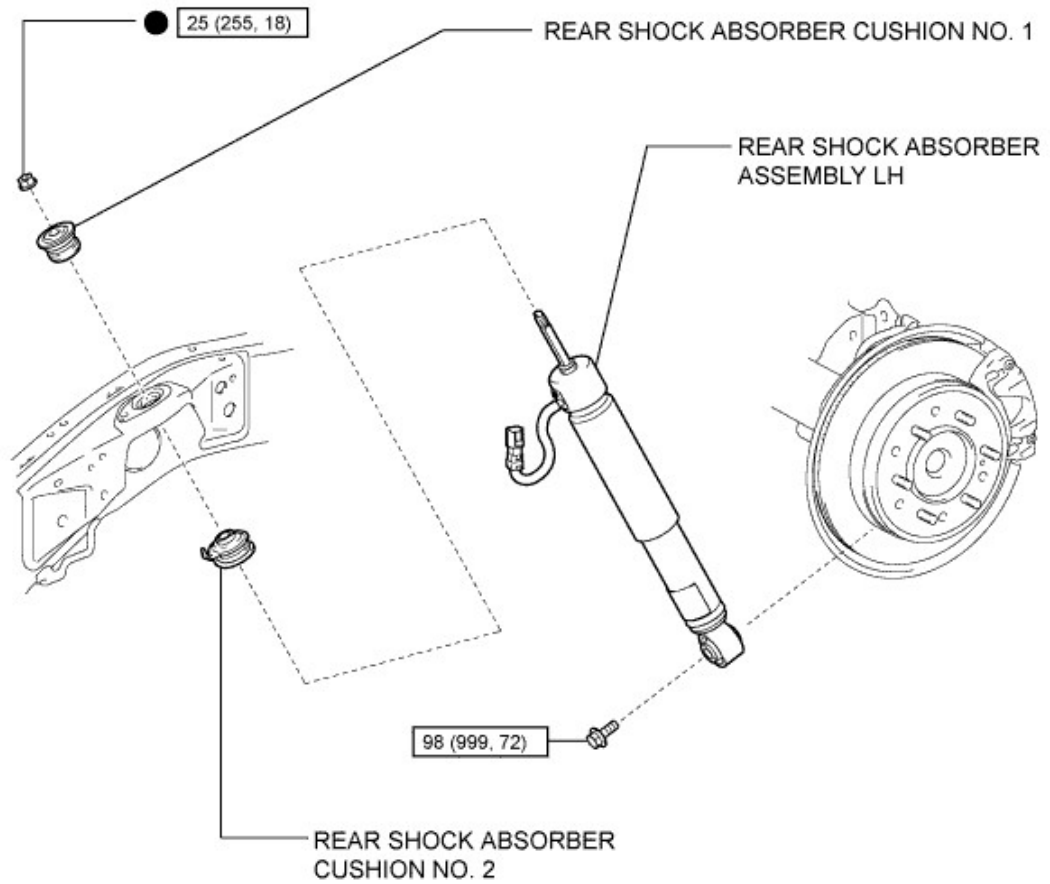


GX460 REAR: ELECTRONIC
SUSPENSION



$\boxed{\text{N}^*\text{m (kgf}^*\text{cm, ft.}^*\text{lbf)}}$: Specified torque

● Non-reusable part

P

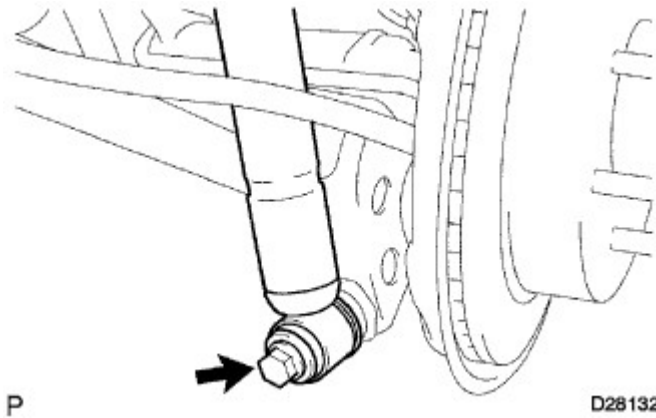
HINT:

- Use the same procedure for the RH and LH sides.
- The procedure listed below is for the LH side.

1. REMOVE REAR WHEEL

2. REMOVE REAR SHOCK ABSORBER ASSEMBLY LH

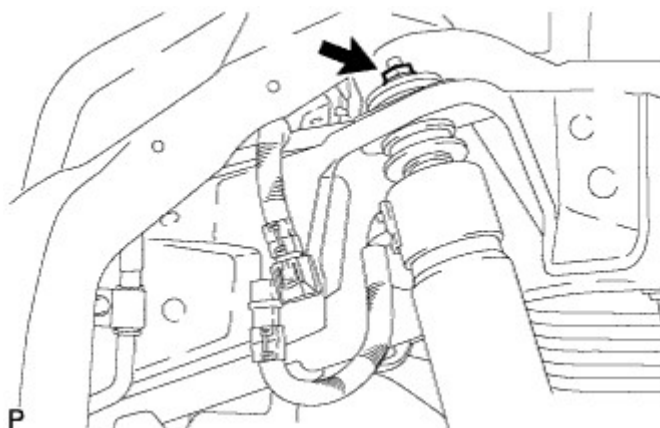
- Support the rear axle housing.
- Disconnect the absorber control actuator connector.



- Remove the bolt and disconnect the rear shock absorber assembly LH from the rear axle housing.

NOTICE:

Do not lower the rear axle housing excessively when disconnecting the rear shock absorber assembly LH with the pneumatic cylinder still installed to the vehicle.



- d.** Remove the nut, cushion No. 1 and rear shock absorber assembly LH.
- e.** Remove the cushion No. 2 from the shock absorber assembly rear LH.