


ECM Calibration: Enhancement to Shifting Performance

Service Category Drivetrain

Section Automatic Transmission/Transaxle

Market USA

Lexus Supports
ASE Certification 

Applicability

YEAR(S)	MODEL(S)	ADDITIONAL INFORMATION
2010	GX460	Transmission(s): 6AT-F VDS(s): BM7FX, JM7FX

Introduction

Some vehicles may exhibit the following shifting conditions:

- Harsh shift on acceleration below 20 mph during the 2-1 downshift.
- Excessive lock-up operation at freeway speeds about 50 – 60 mph, sometimes referred to as “busy shifting”.

The Engine Control Module/ECM (SAE term: Powertrain Control Module/PCM) calibration has been revised. Use the following repair procedure to address these conditions.

Warranty Information

OP CODE	DESCRIPTION	TIME	OPF	T1	T2
EG1010	Recalibrate ECM (PCM) Engine	0.6	89661-60L80	26	99

APPLICABLE WARRANTY

- This repair is covered under the Lexus Federal Emission Warranty. This warranty is in effect for 96 months or 80,000 miles, whichever occurs first, from the vehicle’s in-service date.
- Warranty application is limited to occurrence of the specified condition described in this bulletin.

Calibration Information

MODEL	ECM (CPU)	PREVIOUS CALIBRATION ID	NEW CALIBRATION ID	VDS
GX 460	Main	360E1000	360K0000	BM7FX
	Sub	56052000	56040000	JM7FX

ECM Calibration: Enhancement to Shifting Performance

Parts Information

PREVIOUS PART NUMBER	CURRENT PART NUMBER	PART NAME	QTY
89661-60L80	89661-60Q20	Computer, Engine Control (ECM/PCM)	–
00451-00001-LBL	Same	Authorized Modification Labels	1

NOTE

- The ECM (PCM) should NOT be replaced as part of the repair procedure.
- Authorized Modification Labels may be ordered in packages of 25 from the Materials Distribution Center (MDC) through Dealer Daily – Dealer Support Materials Orders.

Required Tools & Equipment

REQUIRED EQUIPMENT	SUPPLIER	PART NUMBER	QTY
TIS Techstream* or Techstream Lite NOTE: Software version 5.01.001 or later is required.	ADE	TSPKG1 or TSLITEDLR01	1

NOTE

- Additional Techstream units may be ordered by calling Approved Dealer Equipment (ADE) at 1-800-368-6787.
- The Diagnostic Tester is NOT recommended for flash reprogramming with this calibration file. Please use TIS Techstream or an approved J2534 interface to perform this update. Visit techinfo.toyota.com for more information regarding J2534 reprogramming.



SPECIAL SERVICE TOOLS (SST)	PART NUMBER	QTY
GR8 Battery Diagnostic Station*	00002-MCGR8	1

NOTE

Additional SSTs may be ordered by calling 1-800-933-8335.

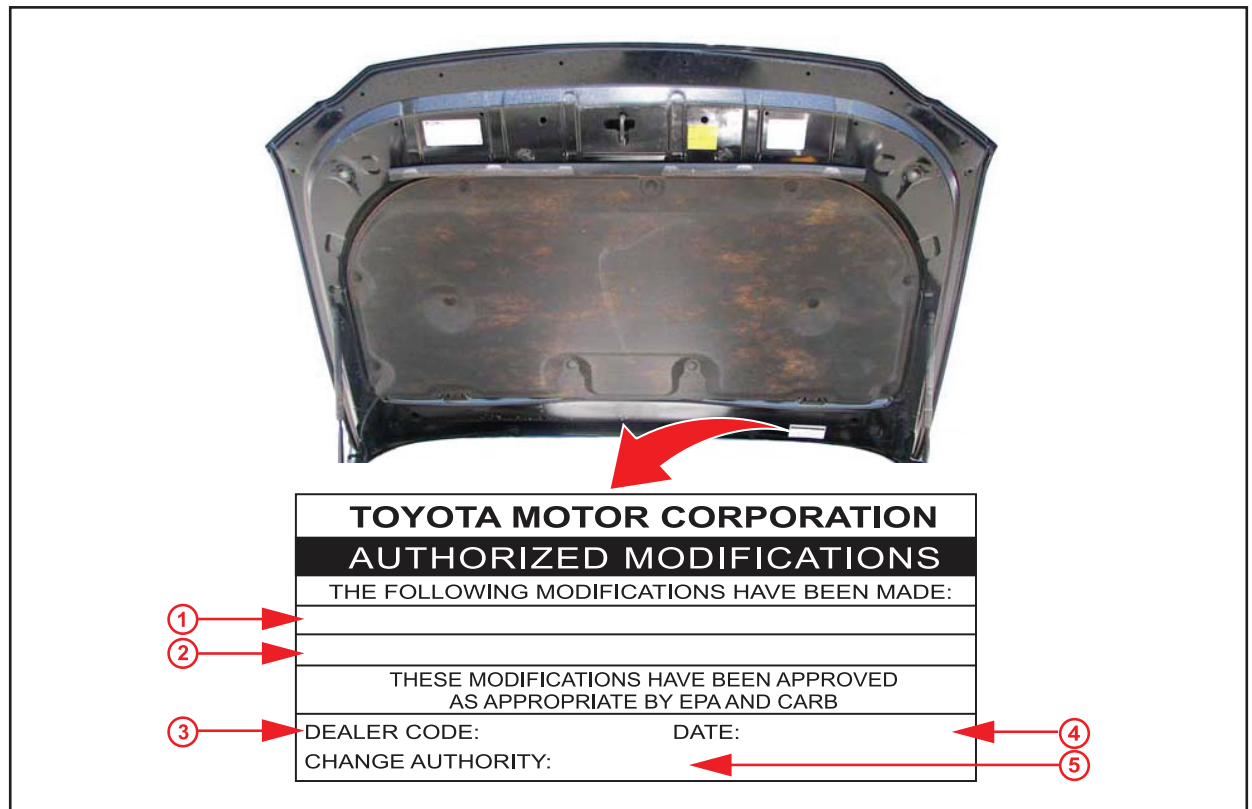
* Essential SST.

ECM Calibration: Enhancement to Shifting Performance

Repair Procedure

1. Test drive the vehicle and confirm there is a harsh shift on acceleration below 20 mph, and or excessive lock-up operation at freeway speeds about 50 – 60 mph.
2. Check for the Authorized Modifications Label affixed to the vehicle in the location shown in Figure 1. Confirm if the ECM (PCM) calibration has been updated. If the calibration ID listed is NOT the latest ECM (PCM) calibration — go to step 3.

Figure 1. Location of Authorized Modifications Label on 2010 GX 460



1	Replacement ECM (PCM) Part Number (i.e., 89661-60Q20)
2	New Calibration ID(s) (i.e., 360K0000, 56040000)
3	Dealer Code

4	Date Completed
5	This TSIB Number

ECM Calibration: Enhancement to Shifting Performance

Repair Procedure (Continued)

- Flash reprogram the ECM (PCM).

NOTE

- The GR8 Battery Diagnostic Station **MUST** be used in Power Supply Mode to maintain battery voltage at 13.5 volts while flash reprogramming the vehicle.
- For details on how to use the GR8 Battery Diagnostic Station, refer to the [GR8 Instruction Manual](#) located on the Technical Information System (TIS), *Diagnostics – Battery*.

Follow the procedures outlined in TSIB No. [L-SB-0015-10](#), “Techstream ECU Flash Reprogramming Procedure”, and flash the ECM (PCM) with the NEW calibration file update.

- Start the engine and warm it up to normal operating temperature before test driving.
- Test drive the vehicle to confirm proper vehicle operation and ECM (PCM) initial learning.

Refer to the Technical Information System (TIS), 2010 GX 460 Repair Manual:

- Drivetrain – Automatic Transmission/Transaxle – [“A760F Automatic Transmission/Transaxle: Automatic Transmission System: Initialization”](#)*

- Install the Authorized Modifications Label.
 - Using a permanent marker, enter the following information on the label:
 - ECM part number [Refer to the **Parts Information** section for the **CURRENT PART NUMBER**]
 - Calibration ID(s) [Refer to the **Calibration Identification Chart** for the **NEW CALIBRATION ID**]
 - Dealer Code
 - Repair Date
 - Change Authority [**This TSB number**]
 - Affix the Authorized Modifications Label to the vehicle at the location shown in Figure 1. The Authorized Modifications Label is available through the MDC, P/N 00451-00001-LBL.