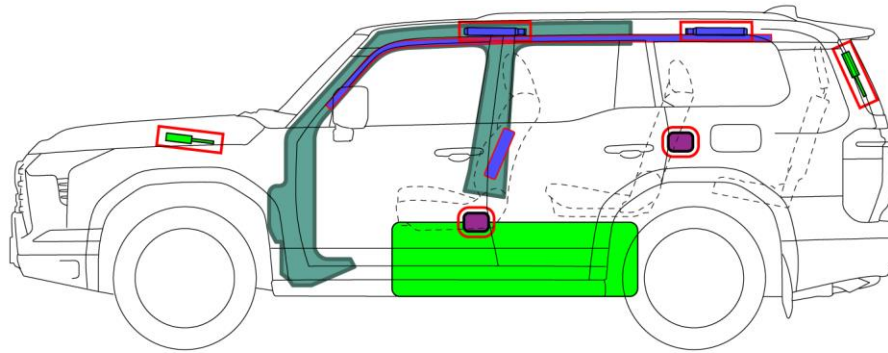
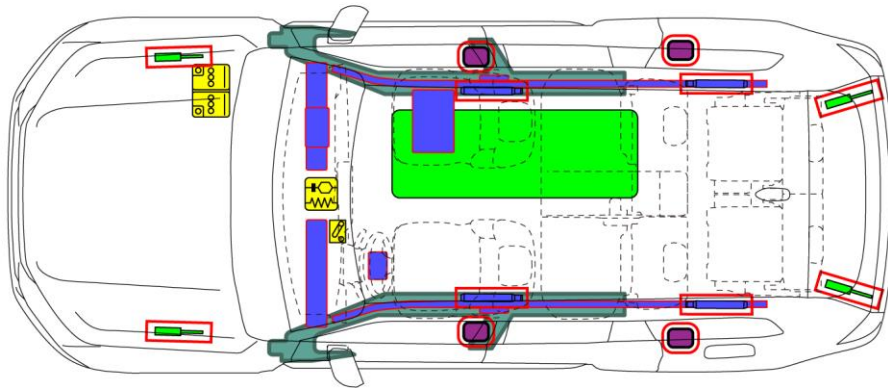

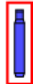


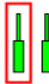








LEXUS GX550

MY: 2024 -



	Airbag		Stored gas inflator		Seat belt pretensioner		SRS control unit		Gas strut / Preloaded spring
	Battery low voltage		High strength zone		Device to shut down power in vehicle		Fuel tank		
		ID No.	Version No.	Version date	Page				
		GX550252	01	12 / 2023	1 / 4				

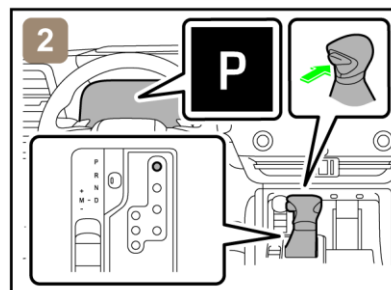
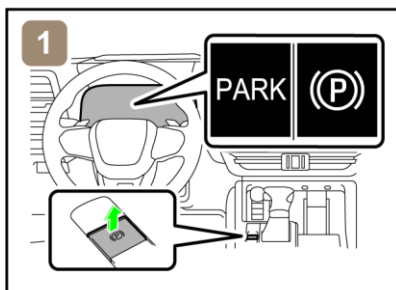
1. Identification / Recognition

■ Location of vehicle badges



2. Immobilisation / Stabilisation / Lifting

■ Completely immobilize the vehicle

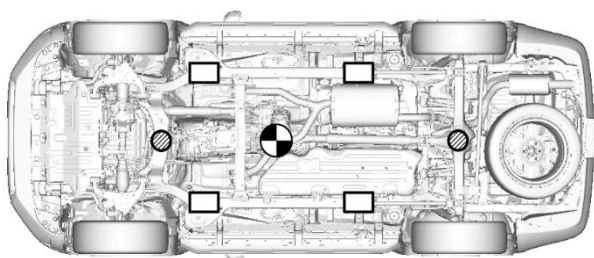


1) Chock the wheels and engage the parking brake.

2) Move the shift lever to the park (P) position.

■ Stabilisation-lifting point

Place cribbing such as wooden blocks at the four points under the front and rear pillars.



Extra Reinforced Lifting Points



Standard Jack Locations



Vehicle Center of Gravity



Do not place cribbing such as wooden blocks or rescue air lifting bags under the exhaust system or fuel system. Doing so may result in fuel leaks or fire.

3. Disable direct hazards / Safety regulations

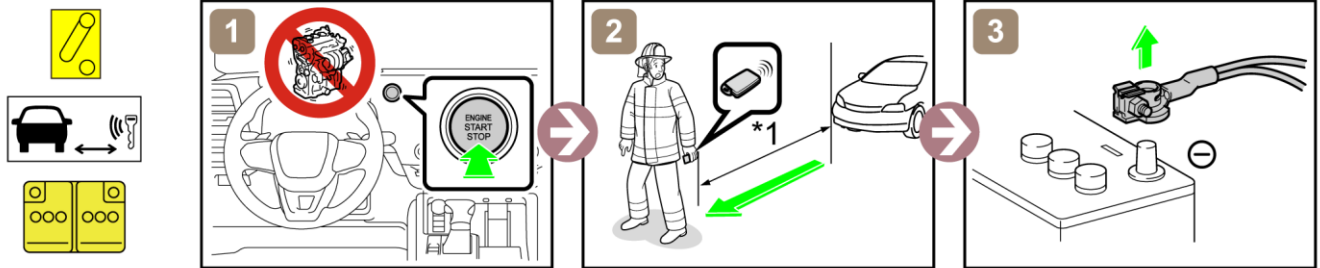
■ If any of the following systems are required to be operated, operate them **BEFORE** disconnecting the battery.

- | | | |
|------------------------------------|------------------------|-----------------|
| Power door lock | Power window | Power seat |
| Power tilt and telescopic steering | Electric parking brake | Power back door |
| Sliding roof | | |

When the 12 V battery is disconnected, electrical components cannot be operated.

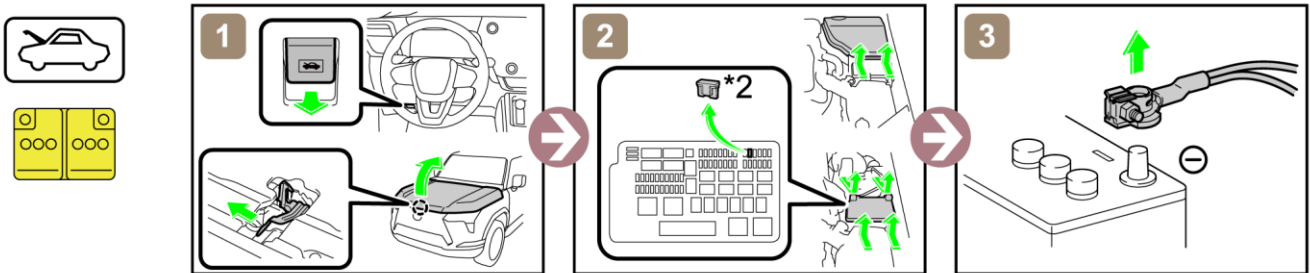
■ Perform procedure Main or Alternative to completely shut off the vehicle.

<Main Procedure>



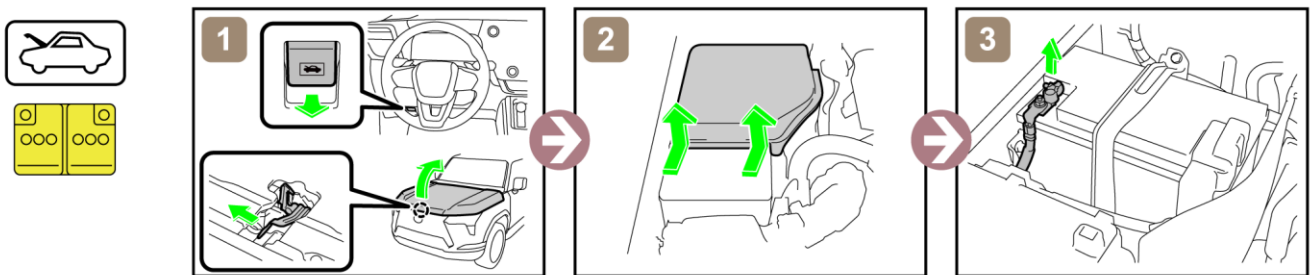
*1: 5 m (16.4 ft) or more

<Alternative Procedure>



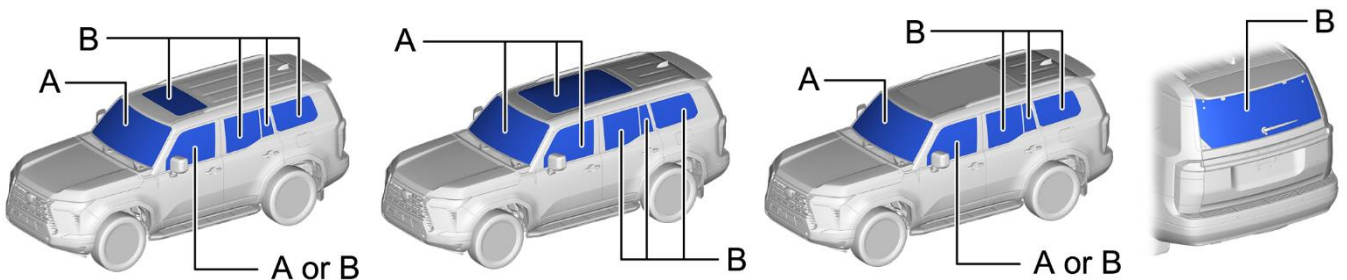
*2: IGN FUSE (10 A RED)

■ Access to 12 V Battery



4. Access to the occupants

■ Window Glass



A	Laminated	B	Tempered
---	-----------	---	----------

5. Stored energy / Liquids / Gases / Solids



12 V Battery



Gasoline Tank: 80 L



Always wear appropriate personal protective equipment (PPE) when dealing with any of these items.

6. In case of fire



RE-IGNITION POSSIBLE !

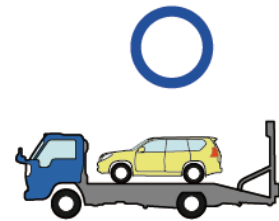


7. In case of submersion



Work on the vehicle only after the vehicle has been pulled out of the water.

8. Towing / Transportation / Storage



RE-IGNITION POSSIBLE !

Store the vehicle at a safe distance (15 m (49.2 ft) or more) from other vehicles.

9. Important additional information

For More details, please refer to "Emergency Response Guide."
<http://www.techinfo.toyota.com>

ID No.	Version No.	Version date	Page
GX550252	01	12 / 2023	4 / 4