



Road Top

# User Manual

CarPlay Smart Link System

For Remote Touch Version



Road Top Co., Ltd

# Contents

1. About Road Top.....	1
2. Product Introduction .....	1
3. Product Installation .....	2
4. Cables Connection.....	2
5. Toggle Switch Setup.....	6
6. CarPlay Decoder Interface & Sound Setup .....	8
7. Function Setting .....	10
7.1 Wired CarPlay Connection.....	10
7.2 Wireless CarPlay Connection .....	11
7.3 Wireless AirPlay Connection .....	12
7.4 Wired Android Auto link Connection .....	14
7.5 Wired Android Auto Connection .....	15
7.6 Wireless Android Auto Connection.....	16
7.7 USB / Media .....	18
7.8 Camera / AV-in.....	18
7.9 360 Surround View Camera Setting.....	19
7.10 Setting.....	22
8. Hot Line of Post Sales Engineer .....	23

## 1. About Road Top

Our vision ---- Keep your Lexus enjoying the Top-level multimedia entertainment on the Road.

The company's brand "Road Top" focuses on upgrading the CarPlay and Android Auto functions to your car original OEM screen. Because of the pursuit of perfect sound quality and the focus on vehicle-cellphone intelligent interconnection and entertainment function, Road Top has won the favor of Lexus owners all over the world.

In the future, we will continue to pursue scientific and technological innovation, focus on quality, and serve all the world customers to create high-end vehicle-phone intelligent interconnection. Keep your Lexus enjoying the Top-level entertainment on the way. Road Top will be with you to enjoy the fun of Lexus driving.

## 2. Product Introduction



This amazing kit adds full CarPlay & Android Auto functionality to your existing in-car entertainment system while retaining all the OEM features. The CarPlay & Android Auto system supports Knob control, Touchpad, and steering wheel control, and is integrated with the console or glove box USB.

Whether your in-car entertainment system is factory-equipped with navigation, phone module or Bluetooth, whether it's Apple Maps, Spotify, making/receiving calls or using Siri to reply to text, the system fully supports Apple systems and phone features.

### 3. Product Installation

We will provide installation guidance videos.

Please scan below QR code, directly enter into Road Top YouTube installation guidance video for Lexus.

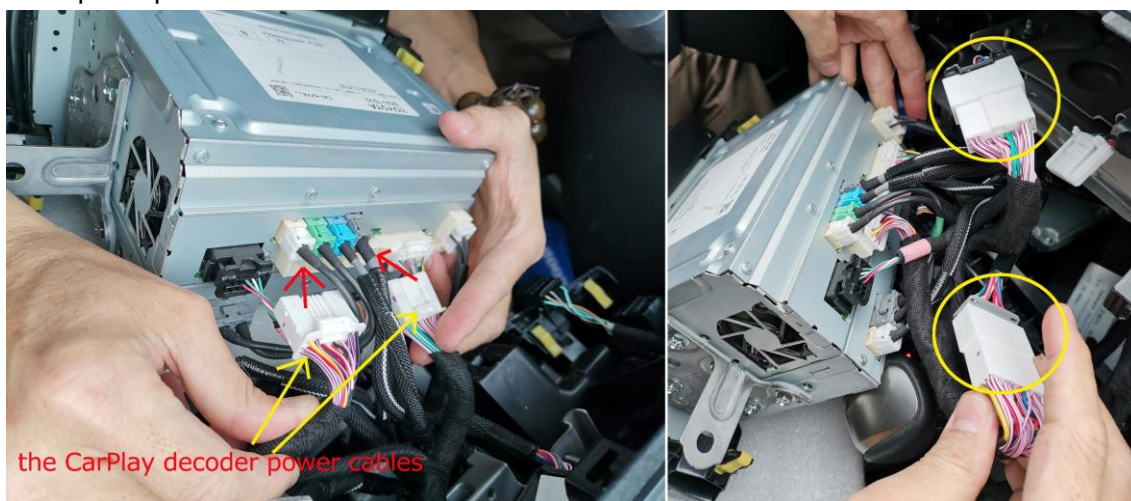
For NX	For ES
	

### 4. Cables Connection

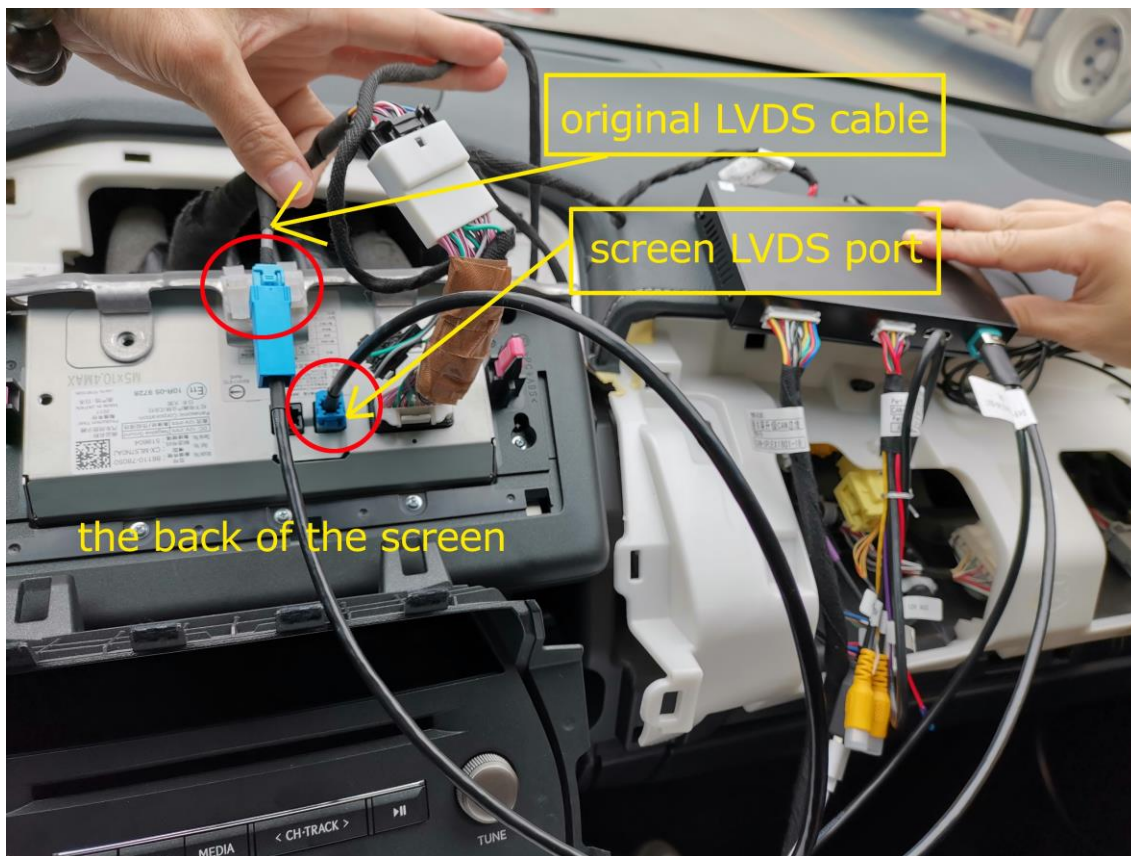


- 1---- connect to the screen LVDS port
- 2---- connect to the head unit host LVDS cable
- 3----connect to head unit host
- 4----connect to head unit host
- 5----connect to OEM power cable female
- 6---- connect to OEM power cable female

Example of power cable connection



Example of LVDS cable connection

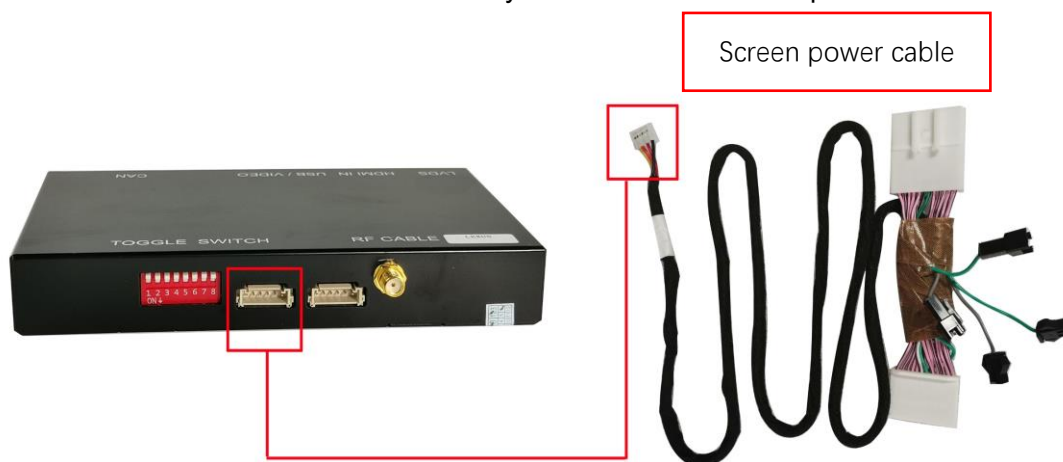


About the Screen Power Cable connection:

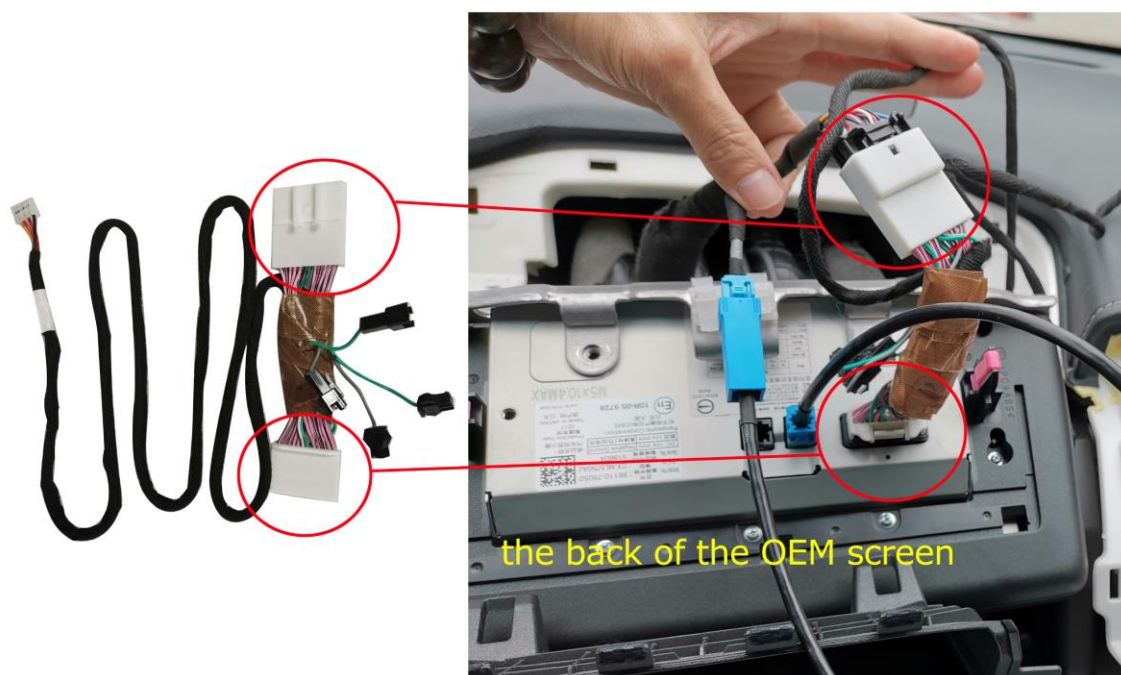
For Lexus cars with 7" or 8" screen with rotary knob control and touchpad control, after finish the installation of the decoder, if the screen flash, you need to connect this screen power cable.

Tips:

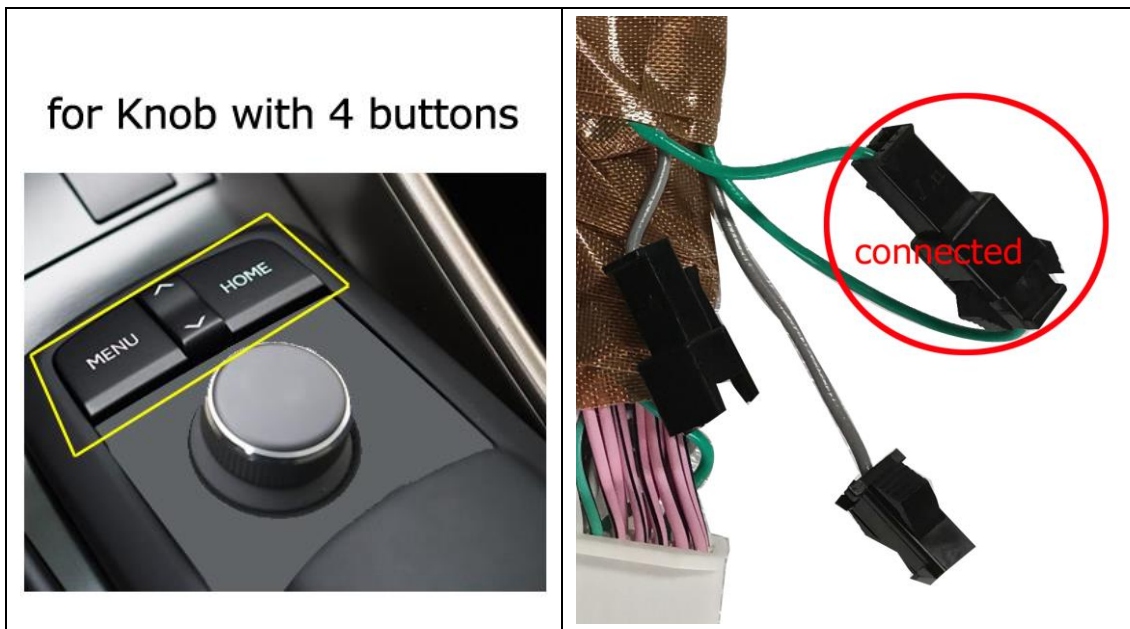
1. Cars with remote touch (screen is 10.25" or 12.3"), don't need to connect this screen power cables
2. Cars with original 360 camera, don't need to connect this screen power cables.
3. Conditions to be connected only is when the screen flash after installation the decoder to Lexus cars with rotary knob control and touchpad control.



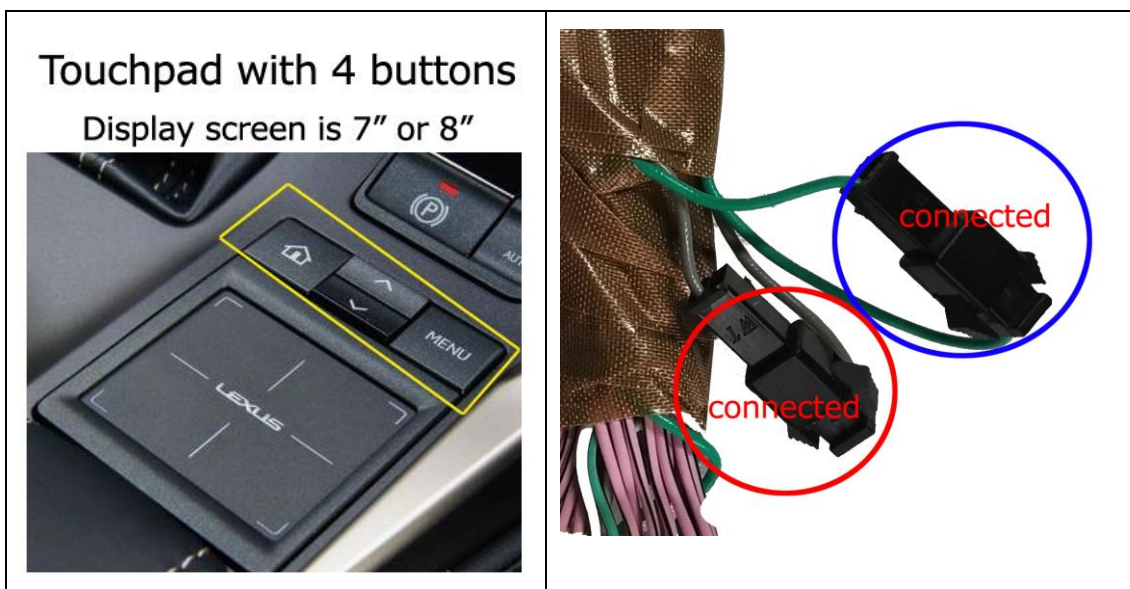
You need to unplug the OEM screen power cable at the back the OEM screen, then connect this screen power cable to the OEM screen and the original screen power male cable.



For car with rotary knob, in the screen power cable, small connectors with green color wires, need to be connected. small connectors with gray color wires, don't need to be connected. As showed below.



For car with touch pad, all the small connectors need to be connected. As showed below.



## 5. Toggle Switch Setup

### 5.1 Toggle switch solution for Lexus with Rotary Knob control (with 4 buttons)

If your Lexus knob control is with 4 buttons as showed below, the toggle switch solution is in the below table.

for Knob with 4 buttons



Smart Link System		<div style="display: flex; align-items: center;"> <div style="border: 1px solid black; padding: 2px; margin-right: 5px;">OFF ON ↓</div> <div style="display: flex; gap: 5px;"> <div style="border: 1px solid black; width: 15px; height: 15px; background-color: black;"></div> <div style="border: 1px solid black; width: 15px; height: 15px; background-color: black;"></div> <div style="border: 1px solid black; width: 15px; height: 15px; background-color: black;"></div> <div style="border: 1px solid black; width: 15px; height: 15px; background-color: black;"></div> <div style="border: 1px solid black; width: 15px; height: 15px; background-color: black;"></div> <div style="border: 1px solid black; width: 15px; height: 15px; background-color: black;"></div> <div style="border: 1px solid black; width: 15px; height: 15px; background-color: black;"></div> <div style="border: 1px solid black; width: 15px; height: 15px; background-color: black;"></div> </div> </div>							
		1	2	3	4	5	6	7	8
Off		✓	✓	✓	✓		✓	✓	✓
On						✓			

### 5.2 Toggle switch solution for Lexus with Touchpad control (with 4 buttons)

If your Lexus Touchpad control is with 4 buttons as showed below, the toggle switch solution is in the below table.

Touchpad with 4 buttons  
Display screen is 7" or 8"



Smart Link System		<div style="display: flex; align-items: center;"> <div style="border: 1px solid black; padding: 2px; margin-right: 5px;">OFF ON ↓</div> <div style="display: flex; gap: 5px;"> <div style="border: 1px solid black; width: 15px; height: 15px; background-color: black;"></div> <div style="border: 1px solid black; width: 15px; height: 15px; background-color: black;"></div> <div style="border: 1px solid black; width: 15px; height: 15px; background-color: black;"></div> <div style="border: 1px solid black; width: 15px; height: 15px; background-color: black;"></div> <div style="border: 1px solid black; width: 15px; height: 15px; background-color: black;"></div> <div style="border: 1px solid black; width: 15px; height: 15px; background-color: black;"></div> <div style="border: 1px solid black; width: 15px; height: 15px; background-color: black;"></div> <div style="border: 1px solid black; width: 15px; height: 15px; background-color: black;"></div> </div> </div>							
		1	2	3	4	5	6	7	8
Off			✓	✓	✓		✓	✓	✓
On		✓				✓			



5.3 Toggle switch solution for Lexus with Remote Touch control

5.3.1 for Lexus cars with Remote touch control and with 12.3" screen

for Remote touch

Display screen is 12.3"



Smart Link System		OFF	ON	1	2	3	4	5	6	7	8
Off	✓						✓		✓	✓	✓
On		✓	✓					✓			

5.3.2 for Lexus cars with Remote touch control, with clock on the 12.3" screen

for Remote touch

12.3" screen with clock on screen



Smart Link System		OFF	ON	1	2	3	4	5	6	7	8
Off	✓					✓			✓	✓	✓
On		✓					✓	✓			

12.3 inch screen with clock on the screen



5.3.3 for Lexus cars with Remote touch control and with 10.25" screen

for Remote touch

Display screen is 10.25"

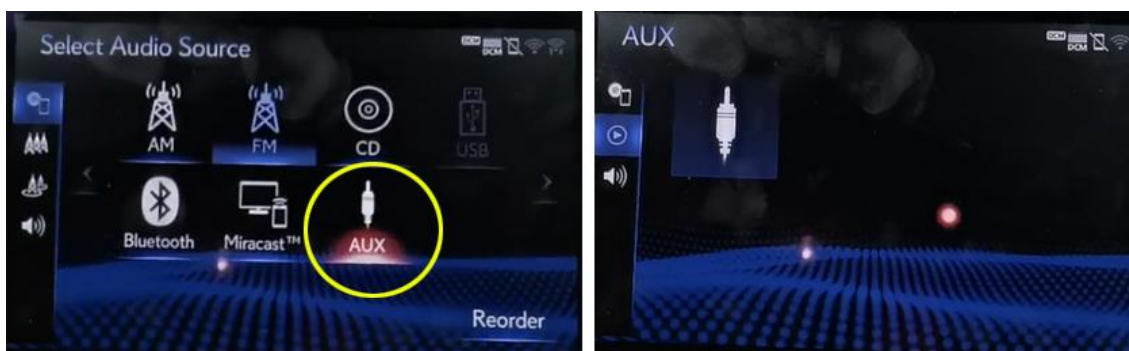


Smart Link System		OFF ON ↓							
	1	2	3	4	5	6	7	8	
Off	✓		✓			✓	✓	✓	
On		✓		✓	✓				

## 6. CarPlay Decoder Interface & Sound Setup

### 6.1 Sound setting

When using the CarPlay system, need to keep original multimedia system into AUX interface, the CarPlay system will have sound.

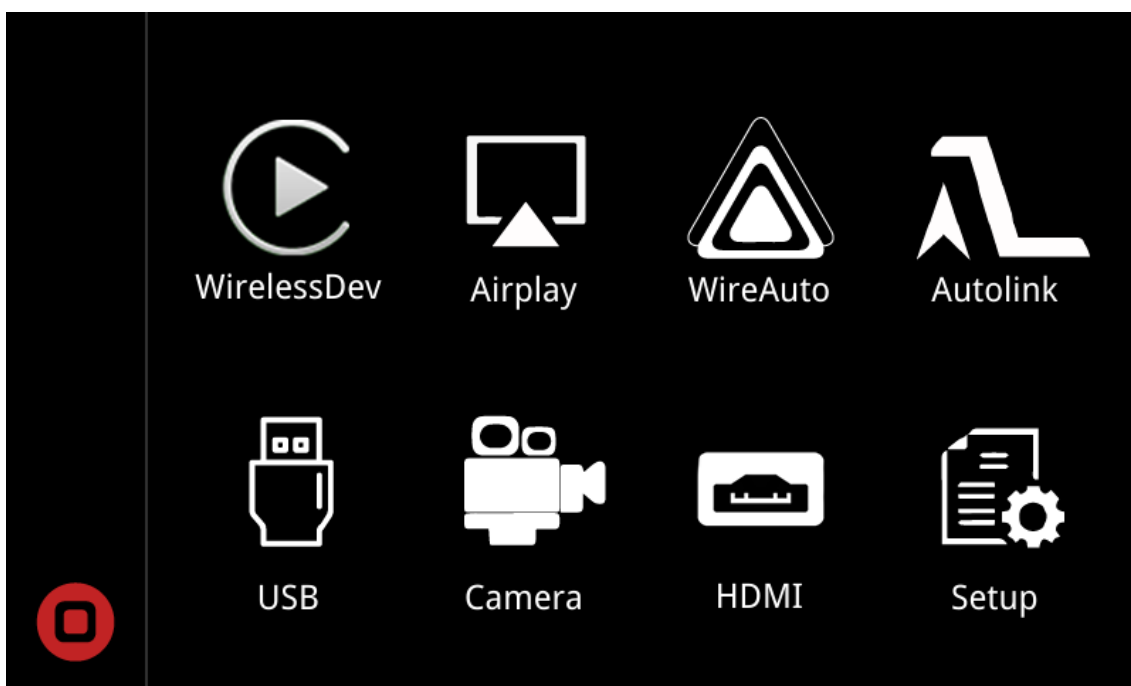


### 6.2 Enter CarPlay Decoder interface

Long press 3 seconds "MENU" button from your car remote touch control / knob control / touchpad control.



Decoder main interface shown



## 7. Functions Connections

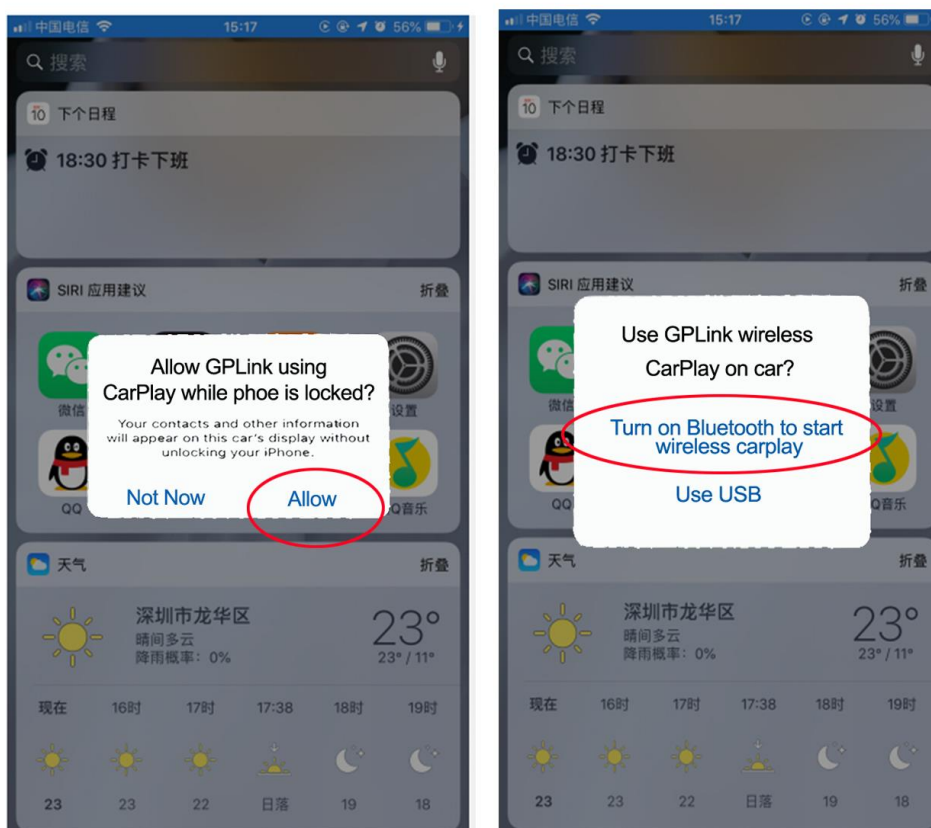
### 7.1 Wired CarPlay Connection.

Step 1: Connect your iPhone to CarPlay decoder via USB cable.

Step 2: Allow your phone to use CarPlay

Step 3: Choose by Bluetooth or by USB

( Siri function will use your car voice button on steering wheel control )



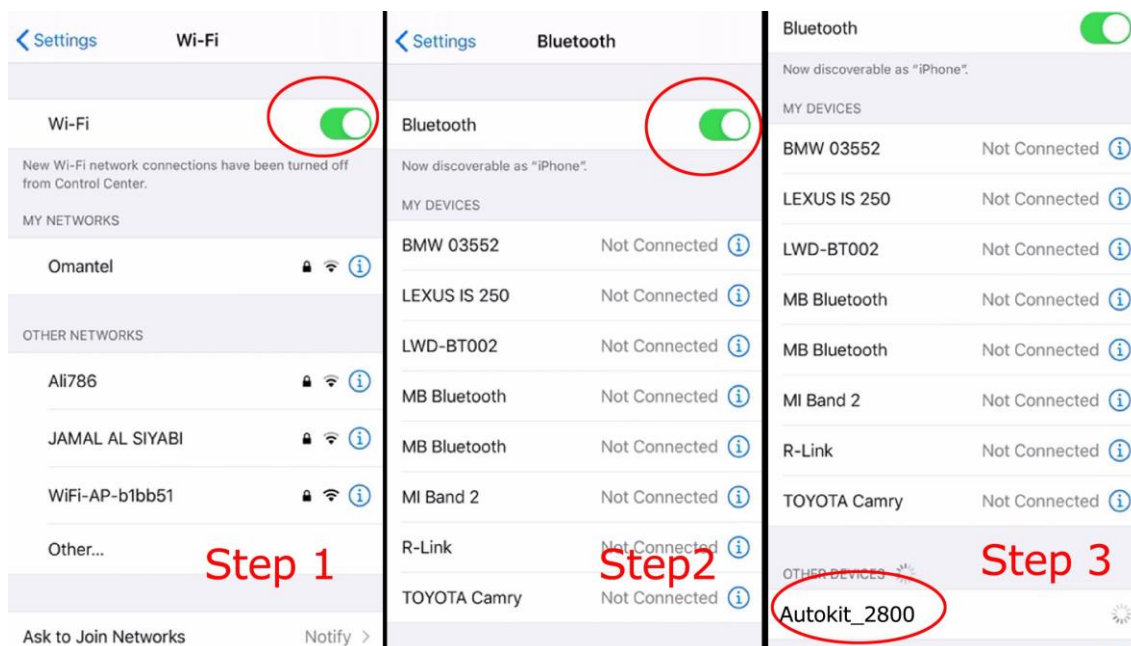
Please scan the QR code, directly enter into Road Top YouTube video guide on how to connect the wired CarPlay.

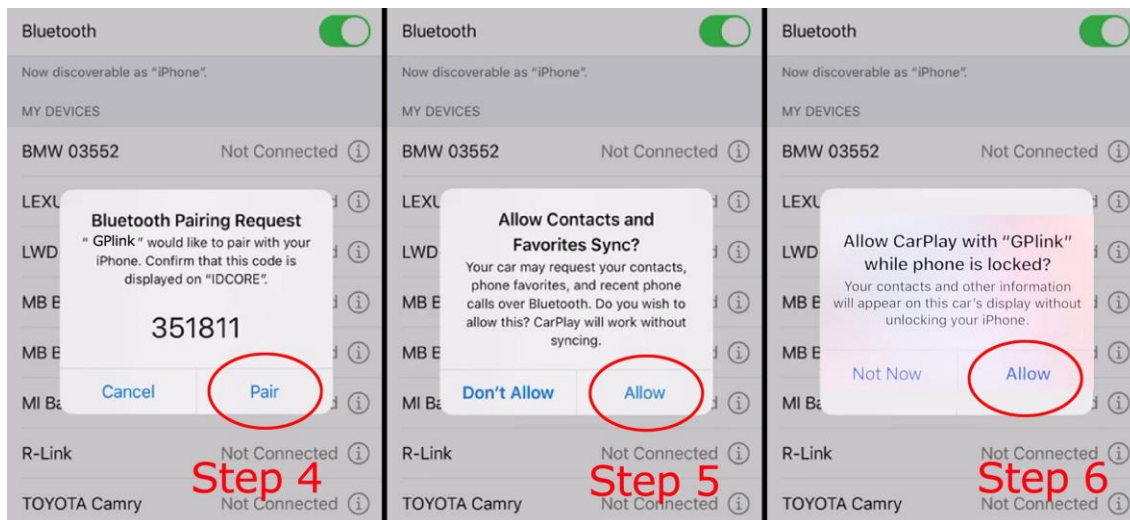


## 7.2 Wireless CarPlay Connection

- Step 1: Open the iPhone WiFi
- Step 2: Open the iPhone Bluetooth
- Step 3: Search the Bluetooth of CarPlay decoder
- Step 4: Pair the Bluetooth
- Step 5: Allow the sync
- Step 6: Use CarPlay
- Step 7: CarPlay logo appear on the screen
- Step 8: Use the CarPlay.

( Siri function will use your car voice button on steering wheel control )



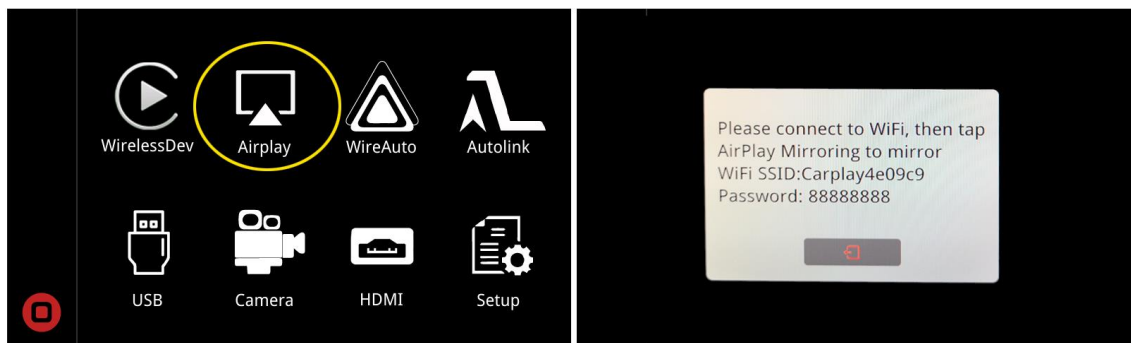


Please scan the QR code, directly enter into Road Top YouTube video guide on how to connect the wireless CarPlay.

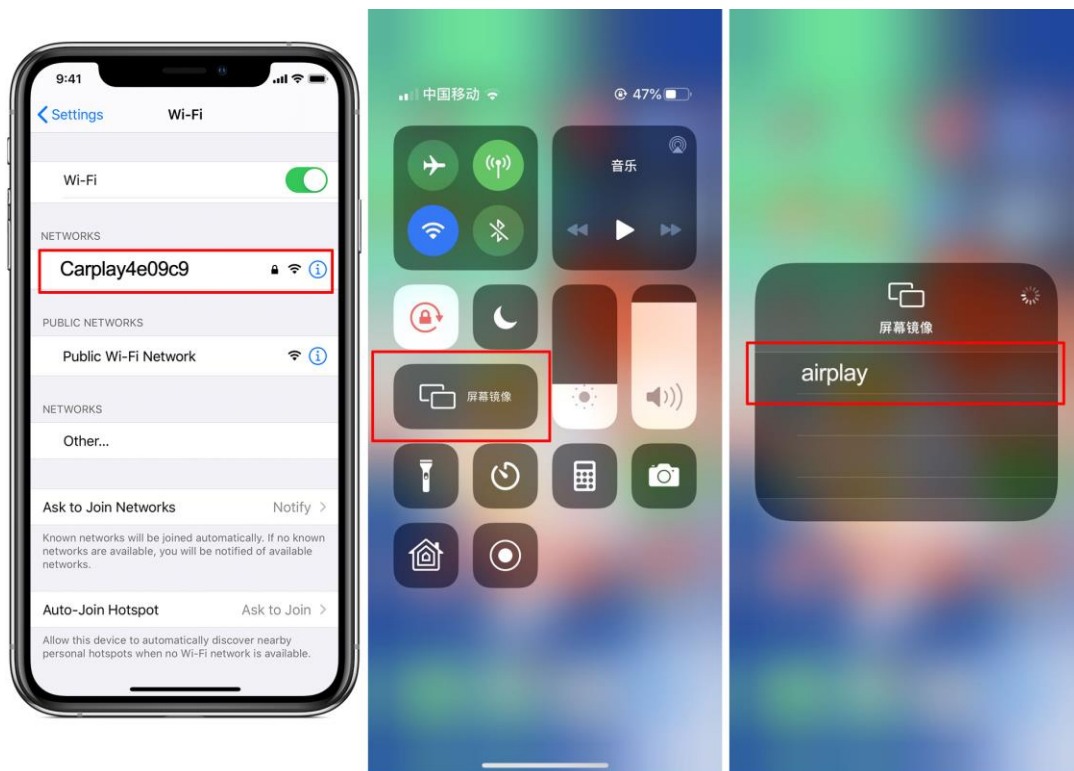


### 7.3 Wireless AirPlay Connection

Here will appear the prompt below after clicking AirPlay option in the main menu.



Find the corresponding SSID in mobile phone Wi-Fi, such as CarPlay4e09c9, and input the password 88888888, slide up from the lower part of the Iphone screen and select AirPlay in the menu option to finish the wireless AirPlay connection.



Please scan the QR code, directly enter into Road Top YouTube video guide on how to connect the wireless AirPlay.



## 7.4 Wired Autolink

Step 1 require your android phone to install the Auto link software.

Please make sure to connect your android phone USB cable to USB cable of CarPlay decoder, as showed in step 3.



Please scan the QR code, directly enter into Road Top YouTube video guide on how to connect the wired Autolink.

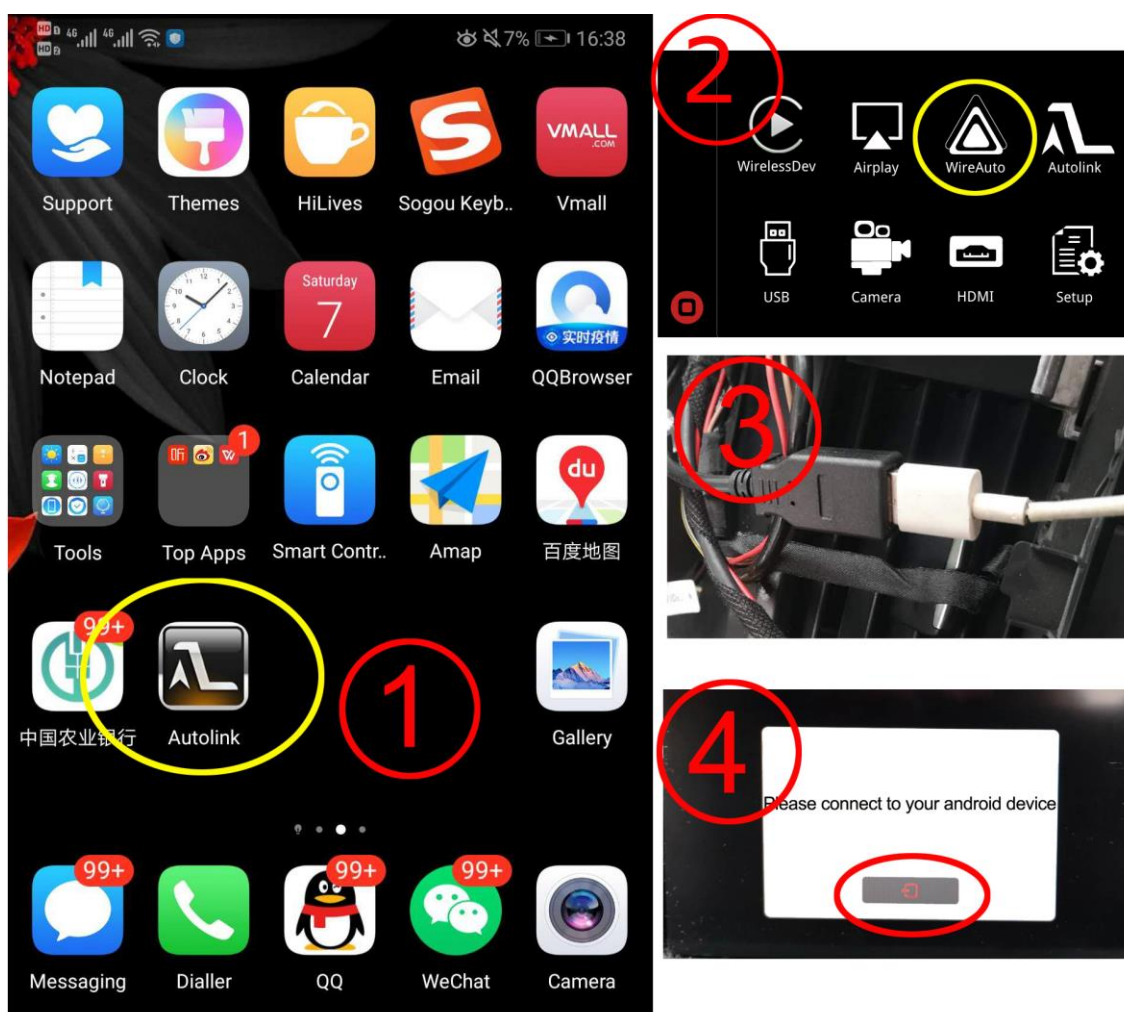




## 7.5 Wired Android Auto

Step 1 require your android phone to install the Android Auto software.

Please make sure to connect your android phone USB cable to USB cable of CarPlay decoder, as showed in step 3.



Please scan the QR code, directly enter into Road Top YouTube video guide on how to connect the wired Android Auto.



## 7.6 Wireless Android Auto Connection

Before use the wireless android auto function, please make sure your android phone support wireless android auto function.

Up to now, there are Samsung and Google mobile phone support wireless android auto, the detail mobile models are showed as below,

Samsung S8, S9, S10, Note 8, Note 9, Note 10 (Android system require Android 9 or above, Android Auto software require 4.7 version or above).

Google Pixel, Nexus 5x, Nexus 6p, (Android system require Android 8 or above, Android Auto software require 3.1 version or above).

Connection steps:

Step 1: It require your android phone to install the Android Auto software.

Step 2: It require your android phone in the English language.

Step 3: Open the Android phone's Wi-Fi

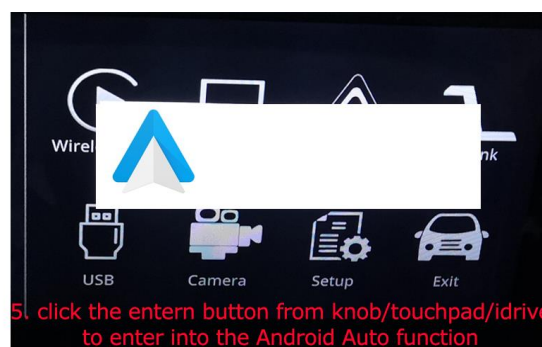
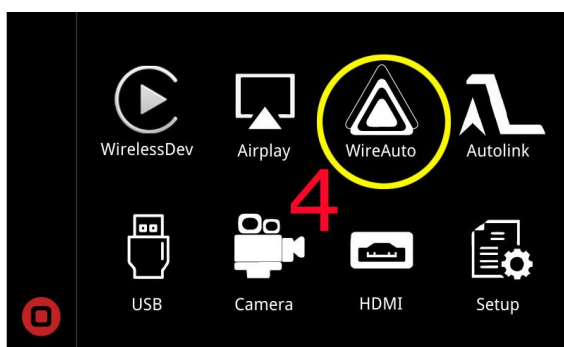
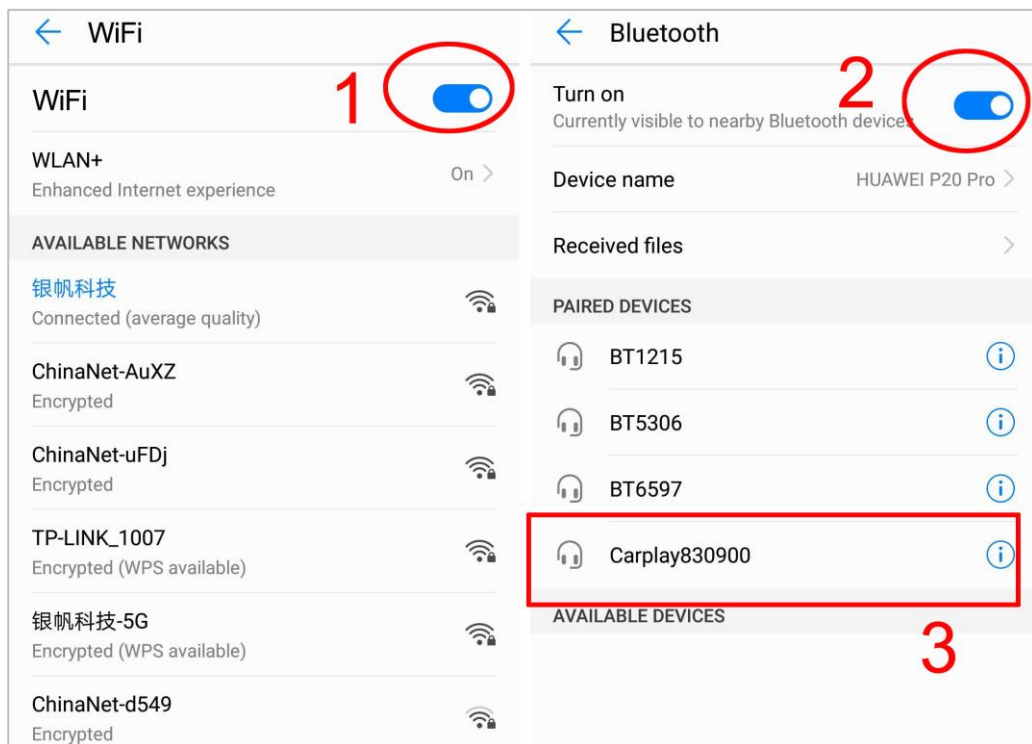
Step 4: Open the Android phone's Bluetooth

Step 5: Search the Bluetooth of CarPlay decoder, like CarPlay830900.

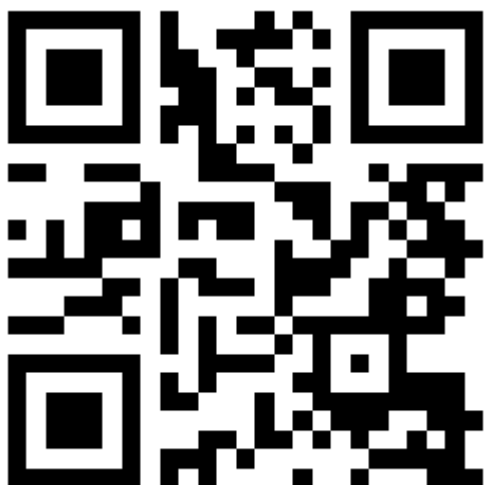
Step 6: Pair the Bluetooth

Step 7: Click the Android Auto button in the decoder main menu to enter into the wireless Android Auto function.

Step 8: when the car screen shows you the Android Auto logo, click the enter button from your car knob / touchpad / remote touch to enter into the Android Auto function.



Please scan the QR code, directly enter into Road Top YouTube video guide on how to connect the wireless Android Auto.

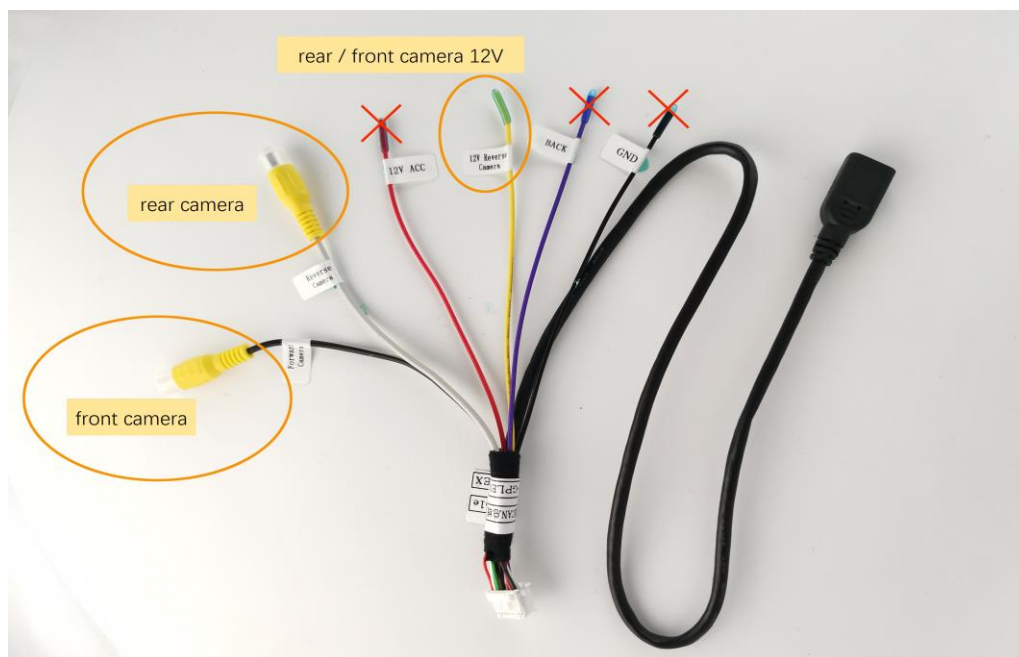


## 7.7 USB / Media

Insert the USB flash drive into the USB port and click the USB icon in the main menu. The system will play it automatically.

## 7.8 Camera / AV-in

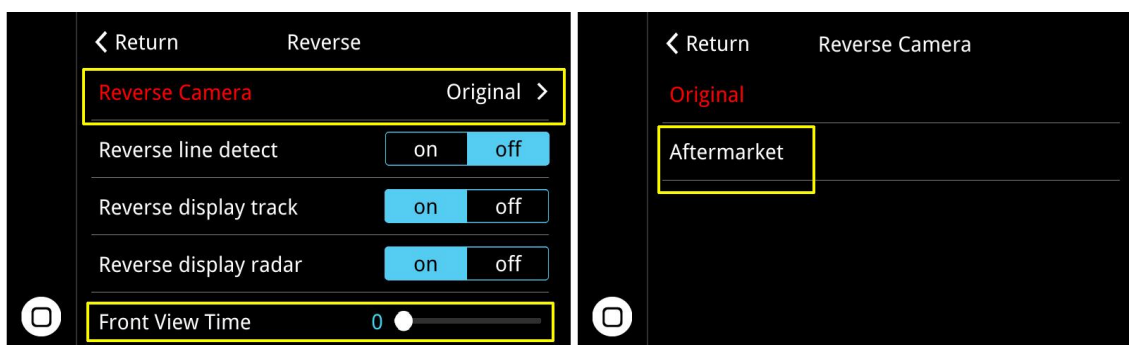
### 1) Aftermarket Rear View Camera & front view camera connection



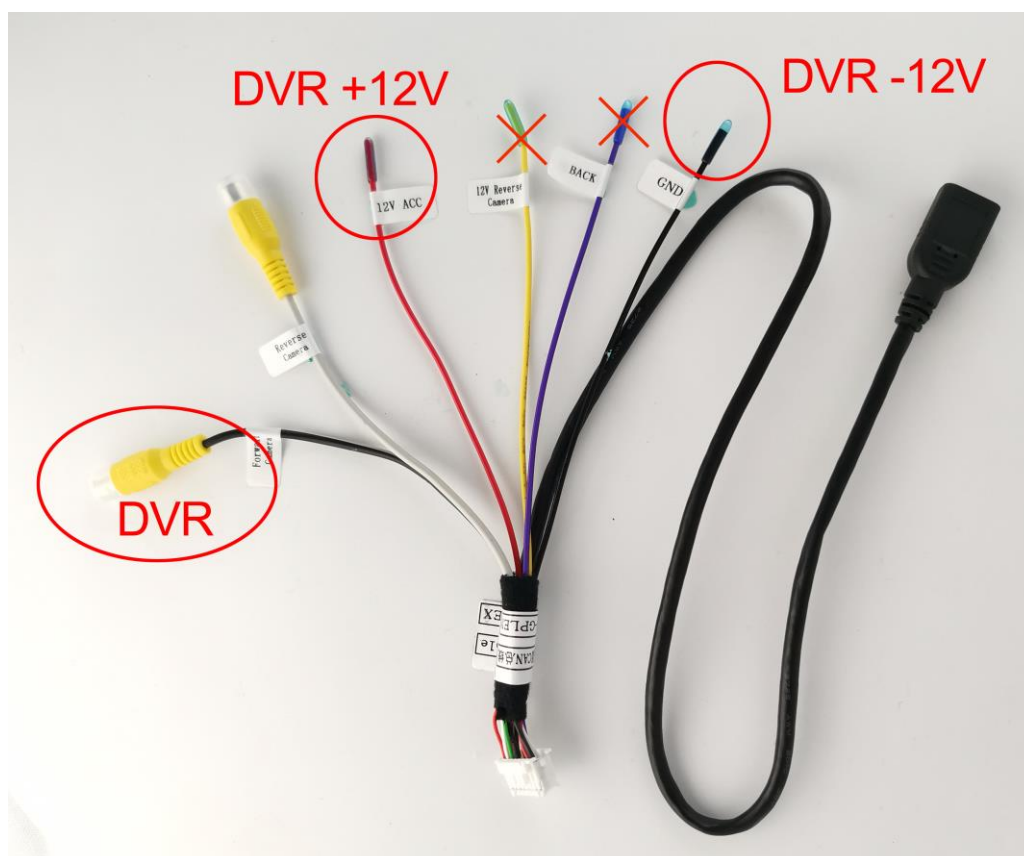
After finish the aftermarket camera connection, you need to set the camera.

Rear view camera setting: click the “Setting” button from the decoder main menu, choose “Reverse”, then set the reverse camera into aftermarket.

Front view camera setting: click the “Setting” button from the decoder main menu, choose “Reverse”, then set the front view time between 0 to 15 seconds.



## 2) DVR connection

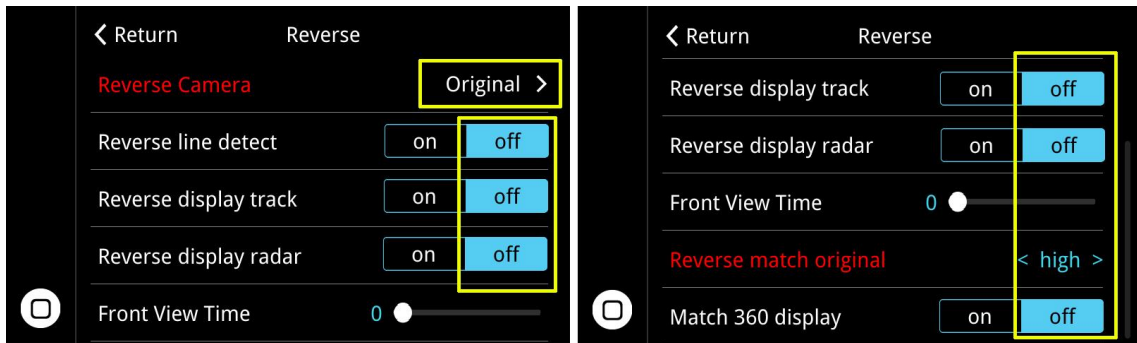


## 7.9 360 surround view camera setting

### 7.9.1 Setting for Original 360 surround view camera:

click the “Setting” button from the decoder main menu, choose “Reverse”, then do the settings as follow,

Reverse camera	choose “Original”
Reverse line detect	choose “Off”
Reverse display track	choose “Off”
Reverse display radar	choose “Off”
Reverse match original	choose “High”
Match 360 display	choose “Off”



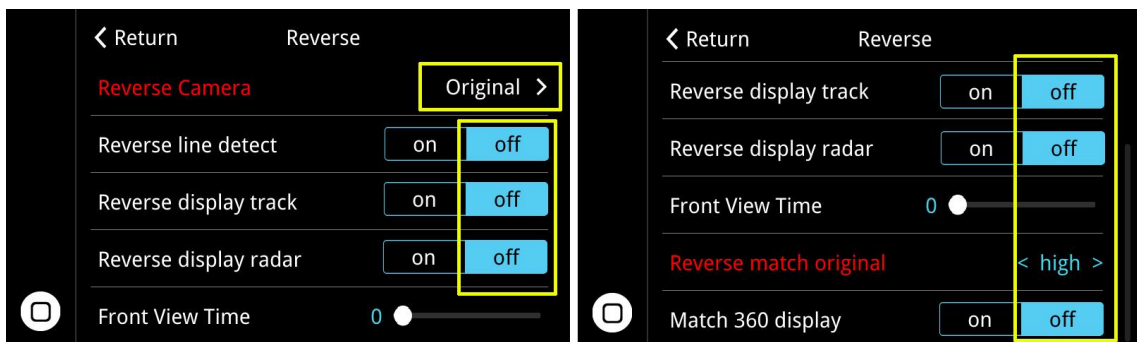
### 7.9.1 Setting for Aftermarket 360 surround view camera

CAN power cables connection order: Head unit --360 main host—CarPlay

LVDS cables connection order: Screen—CarPlay—360 LVDS—Head unit

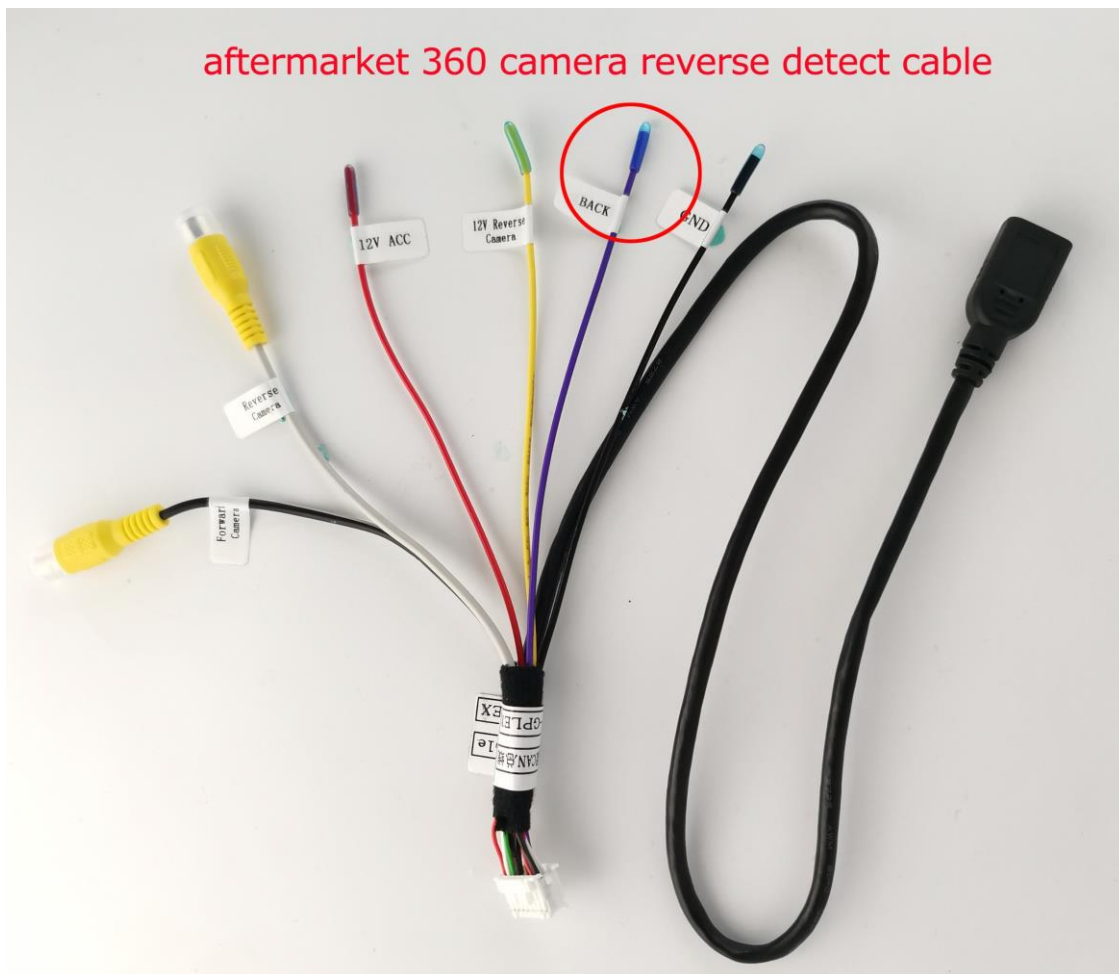
1) For the All-in-on 360 camera ( 360 Decoder and 360 main host in one box)

Reverse camera	choose "Original"
Reverse line detect	choose "Off"
Reverse display track	choose "Off"
Reverse display radar	choose "Off"
Reverse match original	choose "High"
Match 360 display	choose "Off"



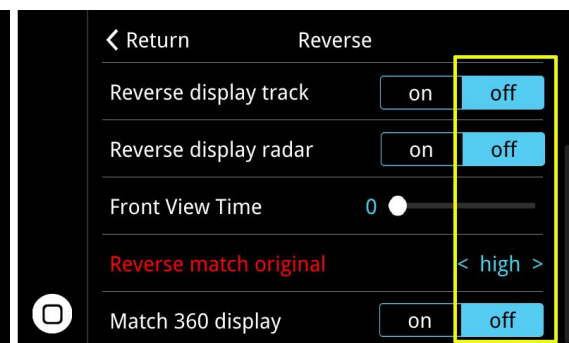
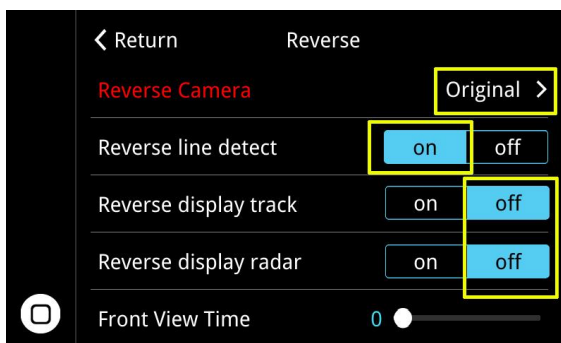
2) For the Double-hosts 360 camera ( 360 Decoder and 360 main host in two different box)

It requires the 360 camera CVBS reverse detect cable connect to the CarPlay decoder reverse detect cable.



The setting is as follows

Reverse camera	choose "Original"
Reverse line detect	choose "On"
Reverse display track	choose "Off"
Reverse display radar	choose "Off"
Reverse match original	choose "High"
Match 360 display	choose "Off"

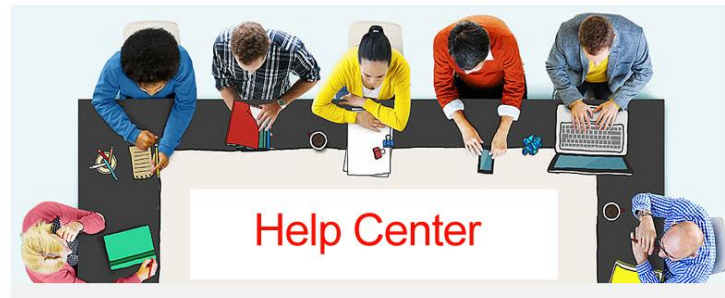


## 7.10 Setting

Items	Parameter	Default setting
Language	English, Italian, Spanish, Turkish, etc.	English
Display	Brightness, Contrast, Saturation, Hue	Brightness, etc.
Audio	Volume	17
	EQ	Standard
	Loudness	Off
	Mic Echo PreConfig	Default
	Microphone Volume	18
	Microphone preamp (OP)	4
	Microphone preamp (PGA)	24
	Microphone Delay	0
	AEC quality	1
Reverse	Reverse camera	Aftermarket camera
	Reverse line detection	Off
	Reversing display track (Aftermarket 360 camera, please choose Off)	On
	Reversing display Radar (Aftermarket 360 camera, please choose Off)	On
	Front View Time	0-15
	Reverse match original	Standard
WiFi channel	6,36,149	36
Right hand drive	Right hand drive or Left-hand drive	Off
Camera mirror		Off
Switch L/R key to D/U key	Switch Left /Right key to Down/Up key	Off
Back switch display	"back" button and "menu" button interchangeable	Off
CarPlay left scrap	Adjust parameters on the left side of the screen	0
CarPlay right scrap	Adjust parameters on the right side of the screen	0
Software update	System update, MCU update, Logo Image Updates, CarPlay Icon Update	No
System version	System version	System version



## a) Hot Line of Post Sales Engineer



Please contact us via purchase platform if you need any help.