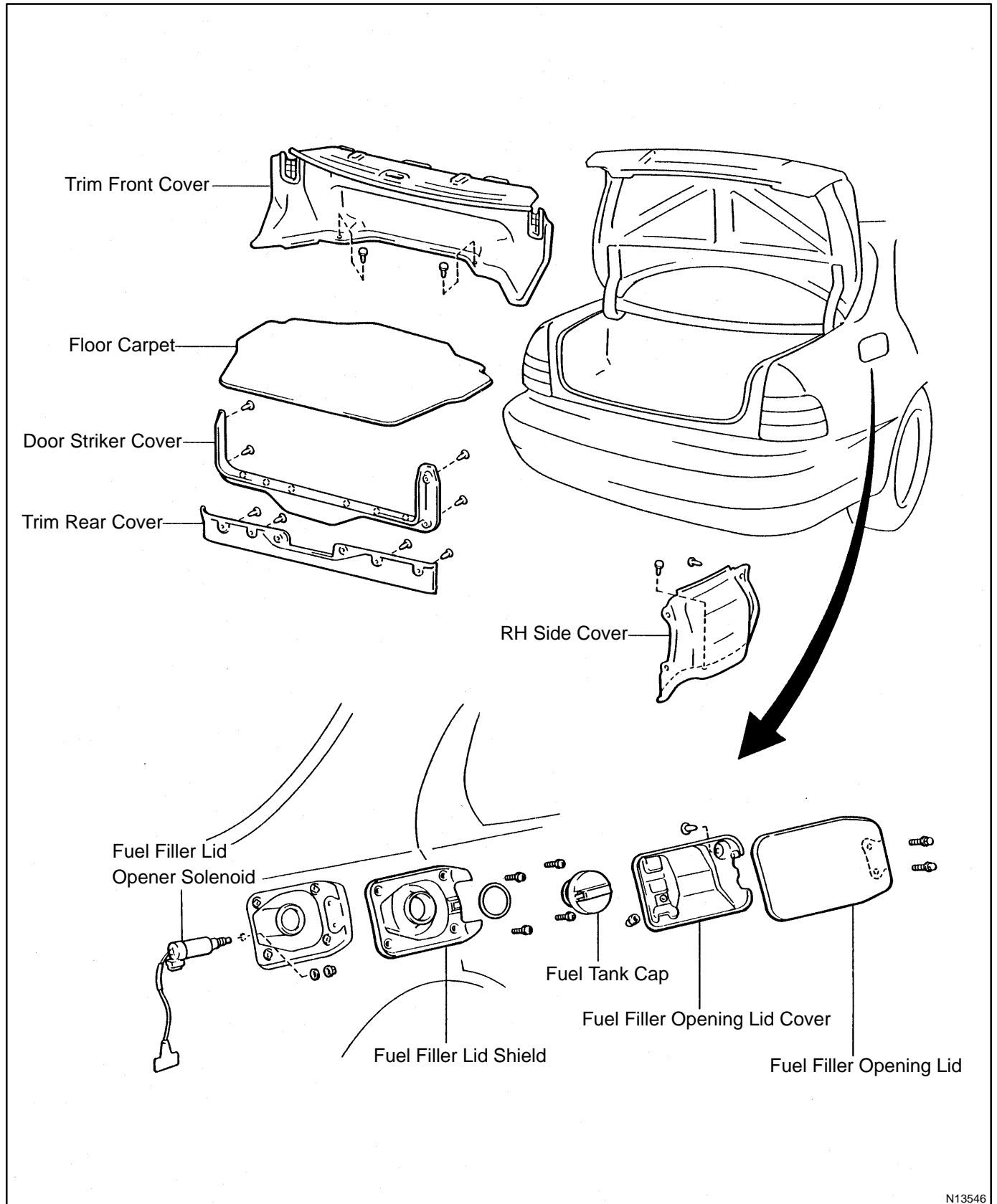


# FUEL LID COMPONENTS

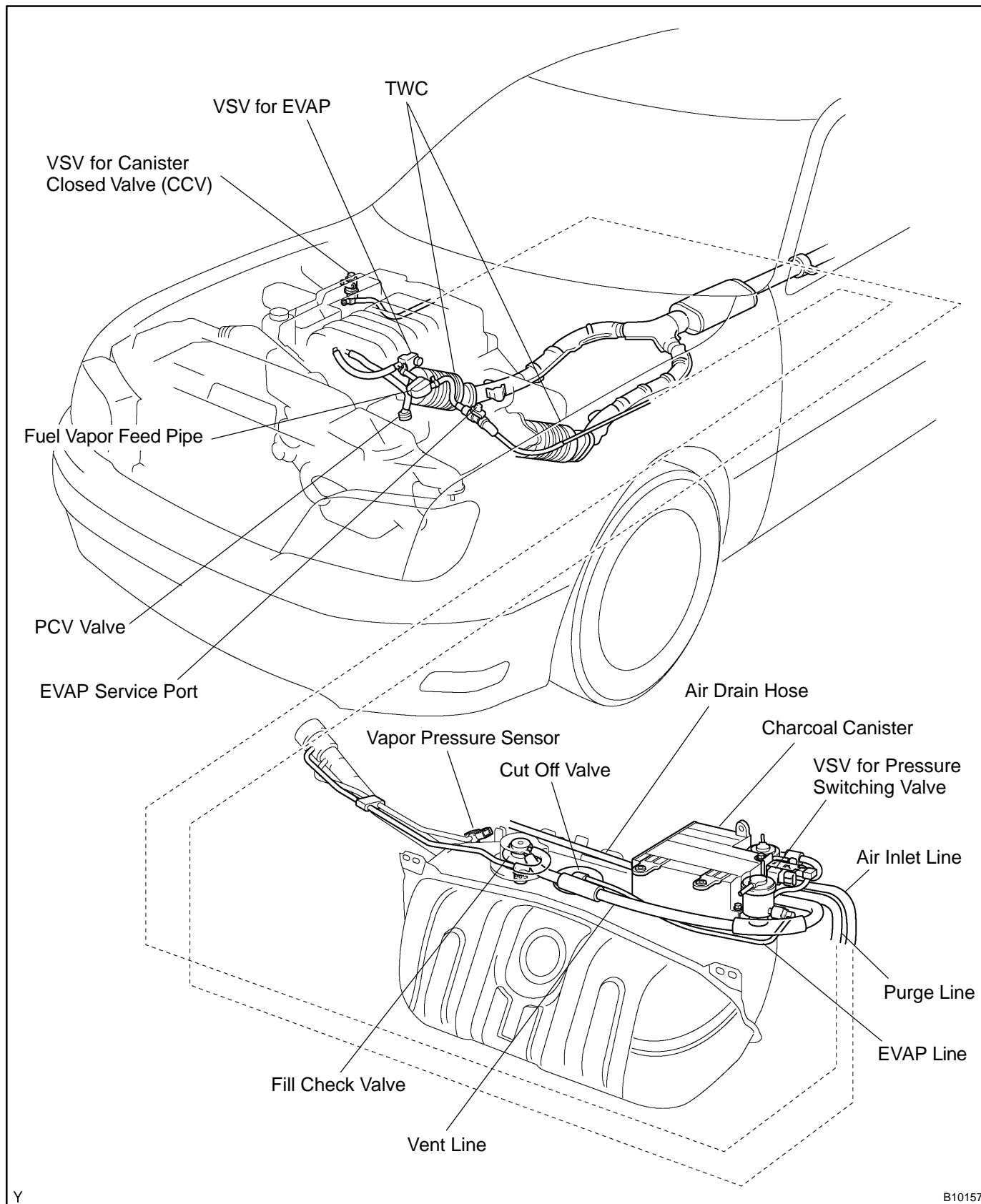
B000F-01



N13546

# PARTS LAYOUT AND SCHEMATIC DRAWING LOCATION

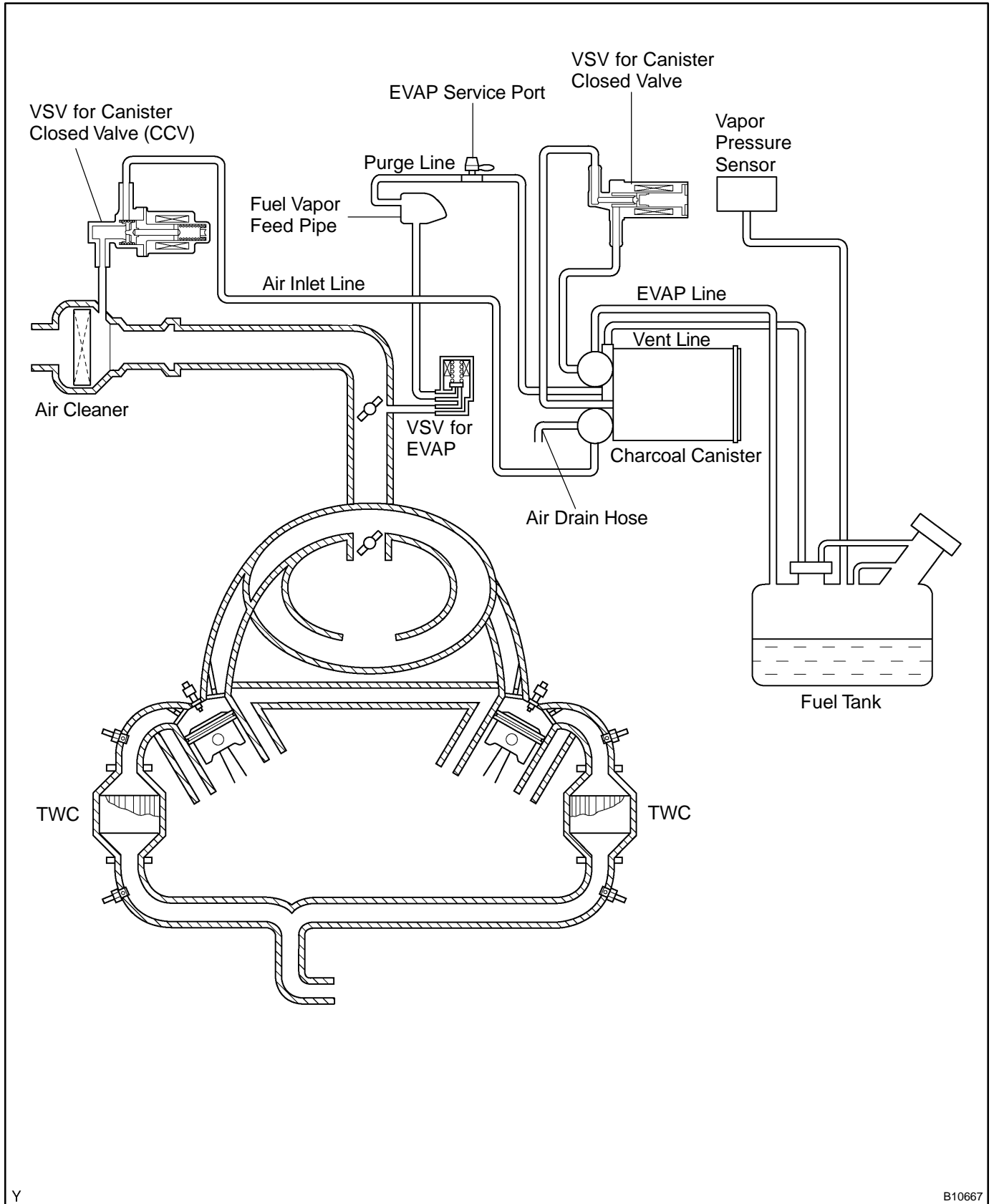
EC03U-03



Y

B10157

# DRAWING



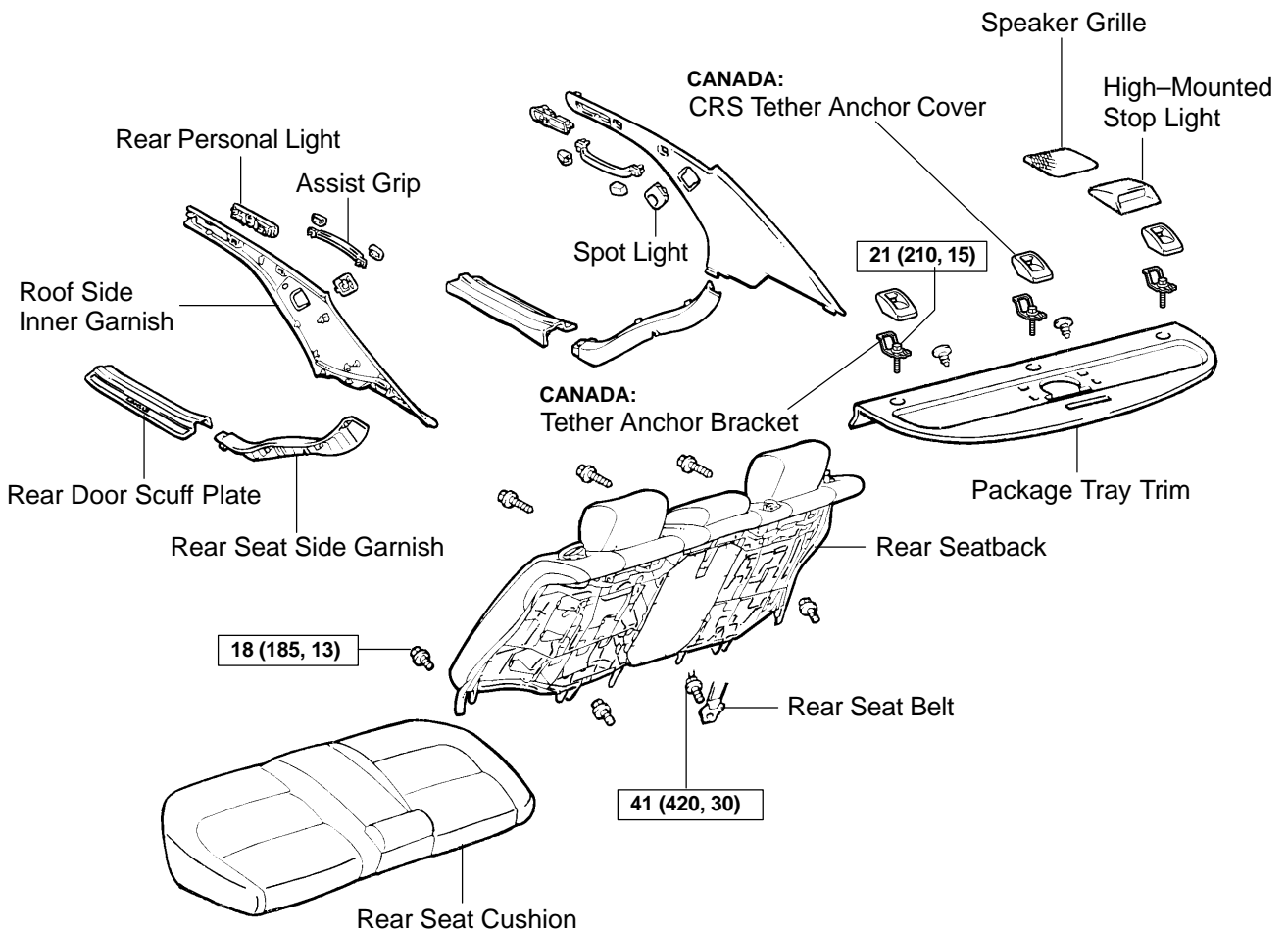
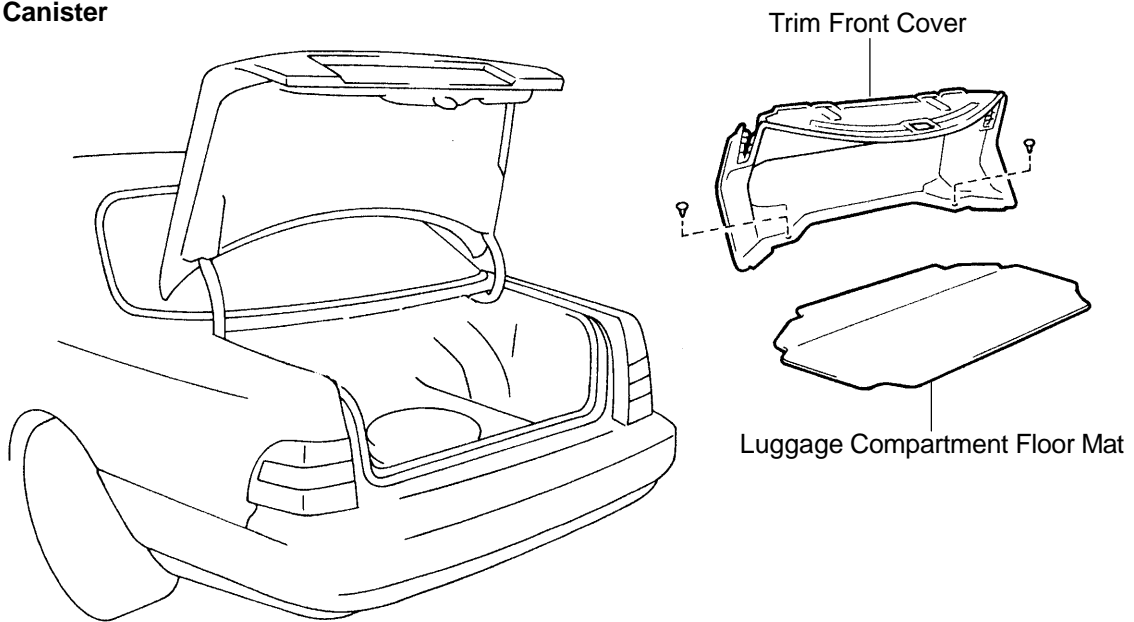
Y

B10667

# EVAPORATIVE EMISSION (EVAP) CONTROL SYSTEM COMPONENTS

ECOER-01

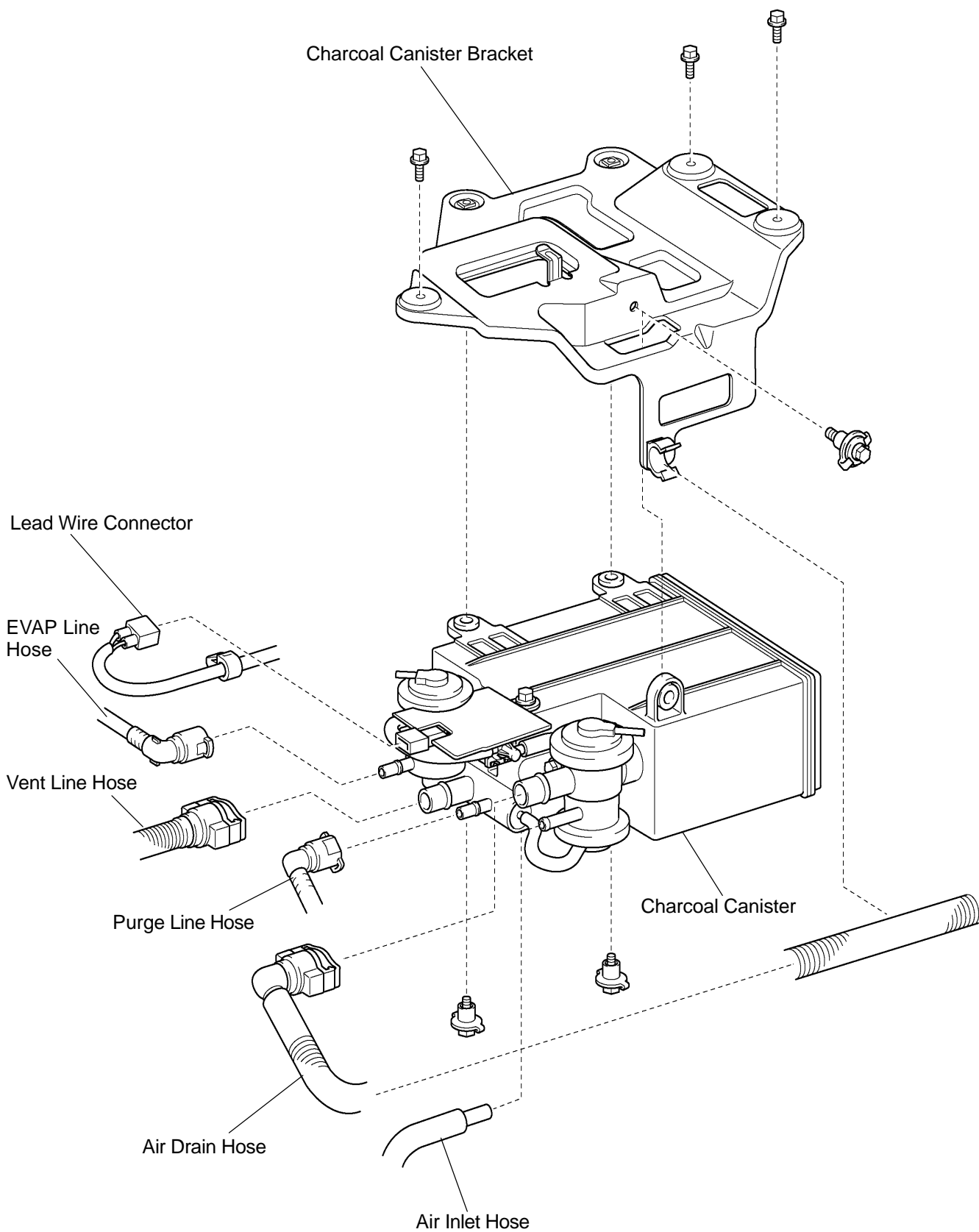
## Charcoal Canister



N·m (kgf·cm, ft·lbf) : Specified torque

B10152

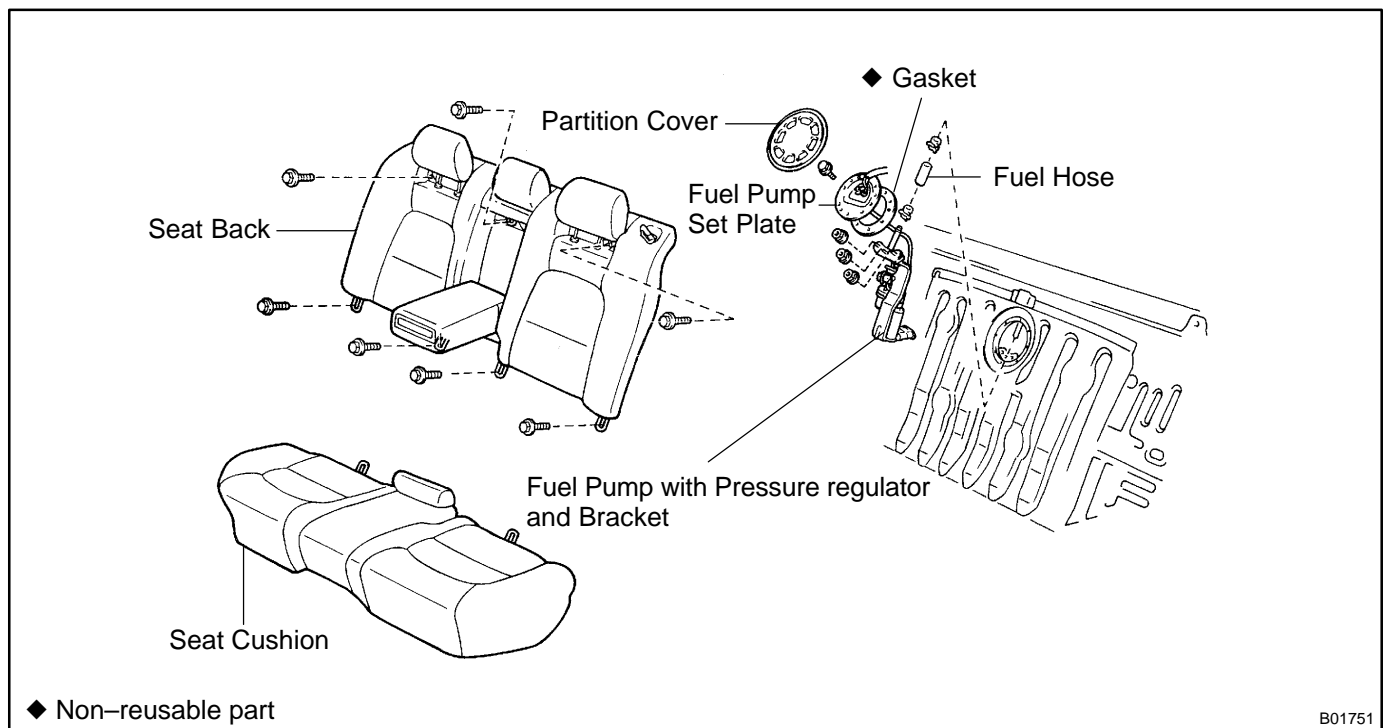
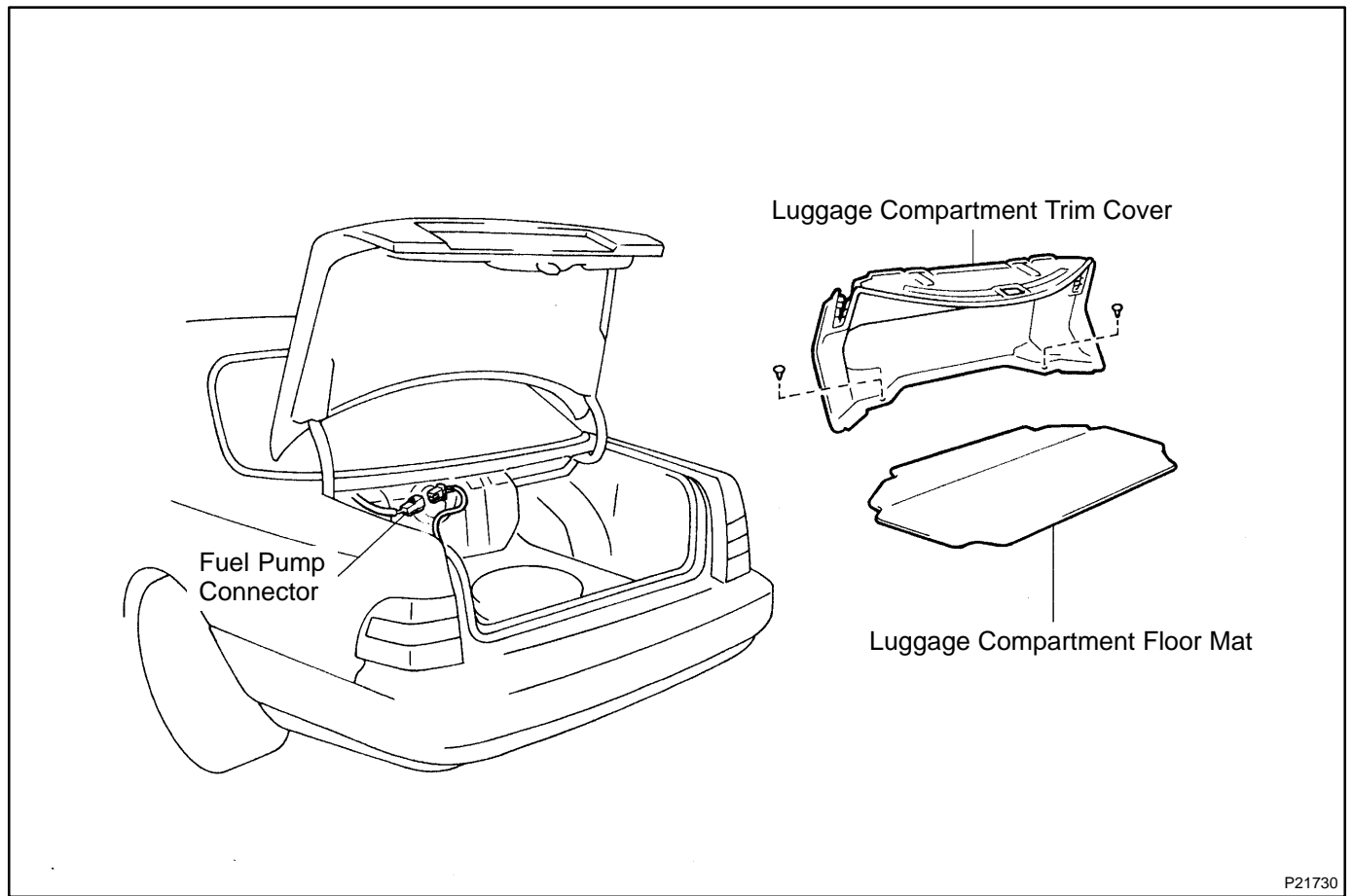
### Charcoal Canister



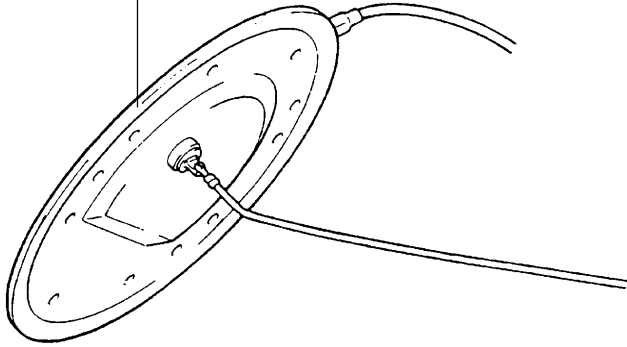
Y

B10158

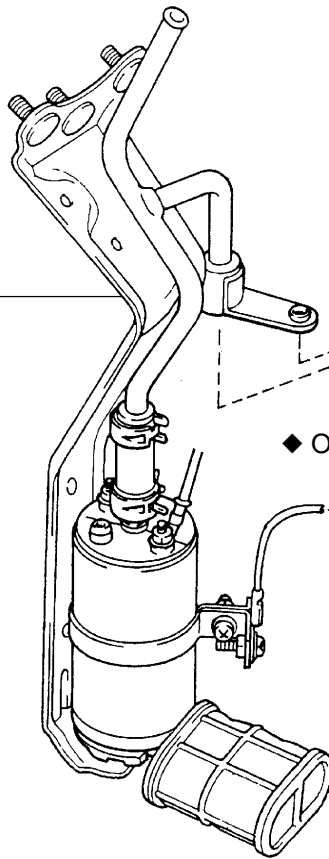
# COMPONENTS



Fuel Pump Set Plate

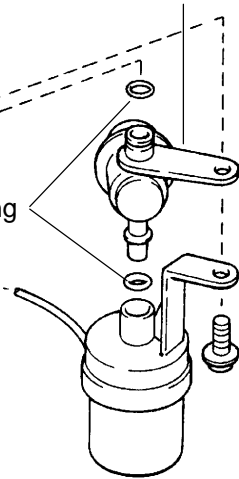


Fuel Pump and Bracket



Fuel Pressure regulator

◆ O-Ring



Fuel Filter

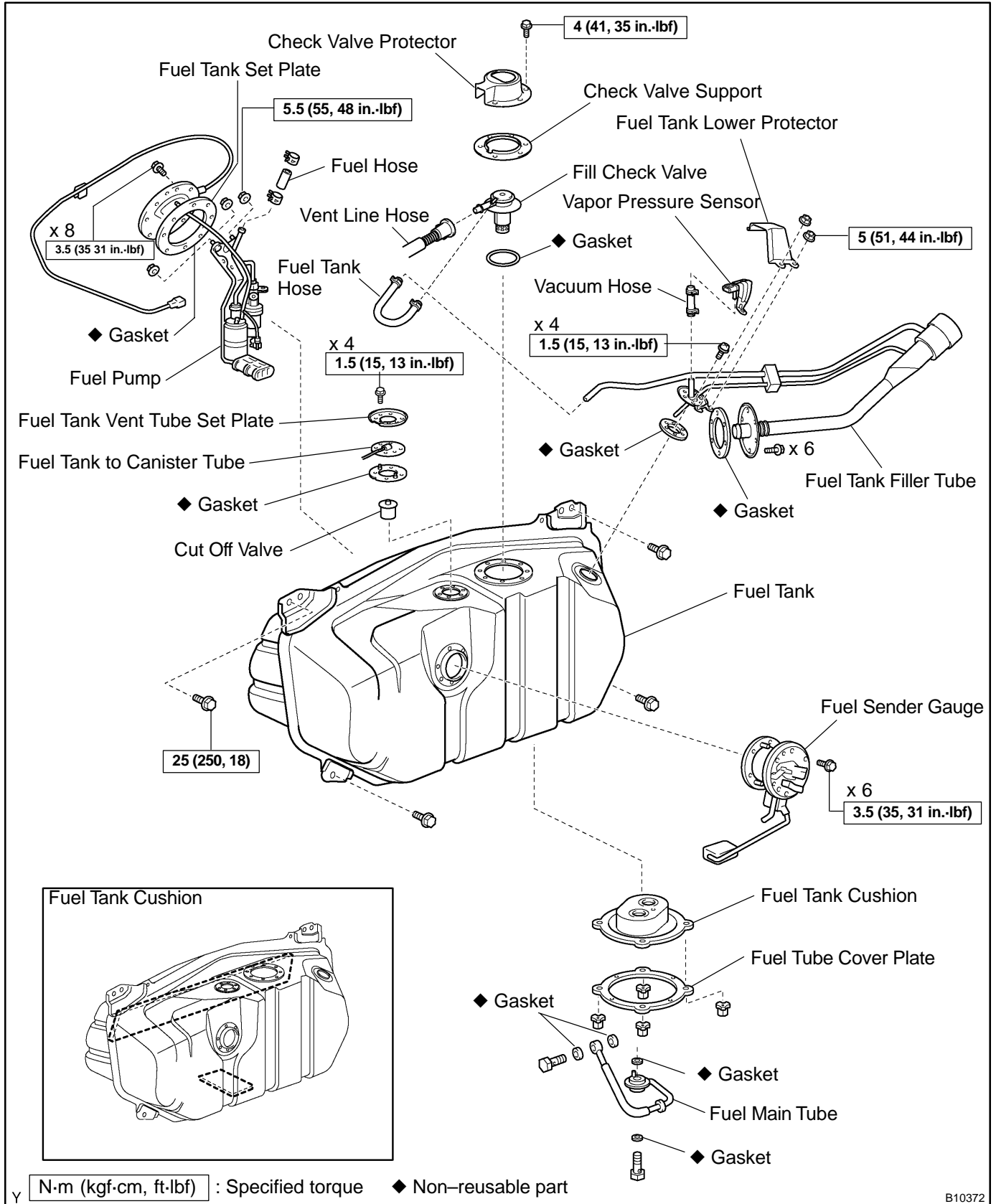
◆ Non-reusable part

B01755

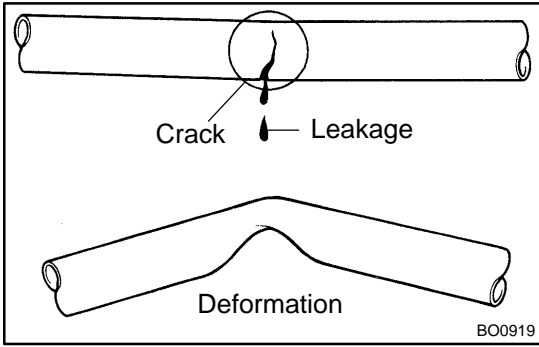
# FUEL TANK AND LINE COMPONENTS

**CAUTION:**

- Always use new gaskets when replacing the fuel tank or components part.
- Apply the proper torque to all parts tightened.





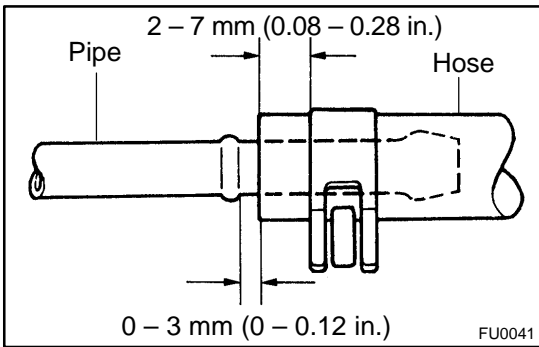
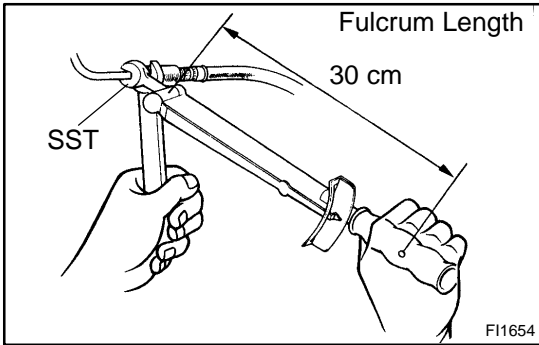


## INSPECTION

### INSPECT FUEL TANK AND LINE

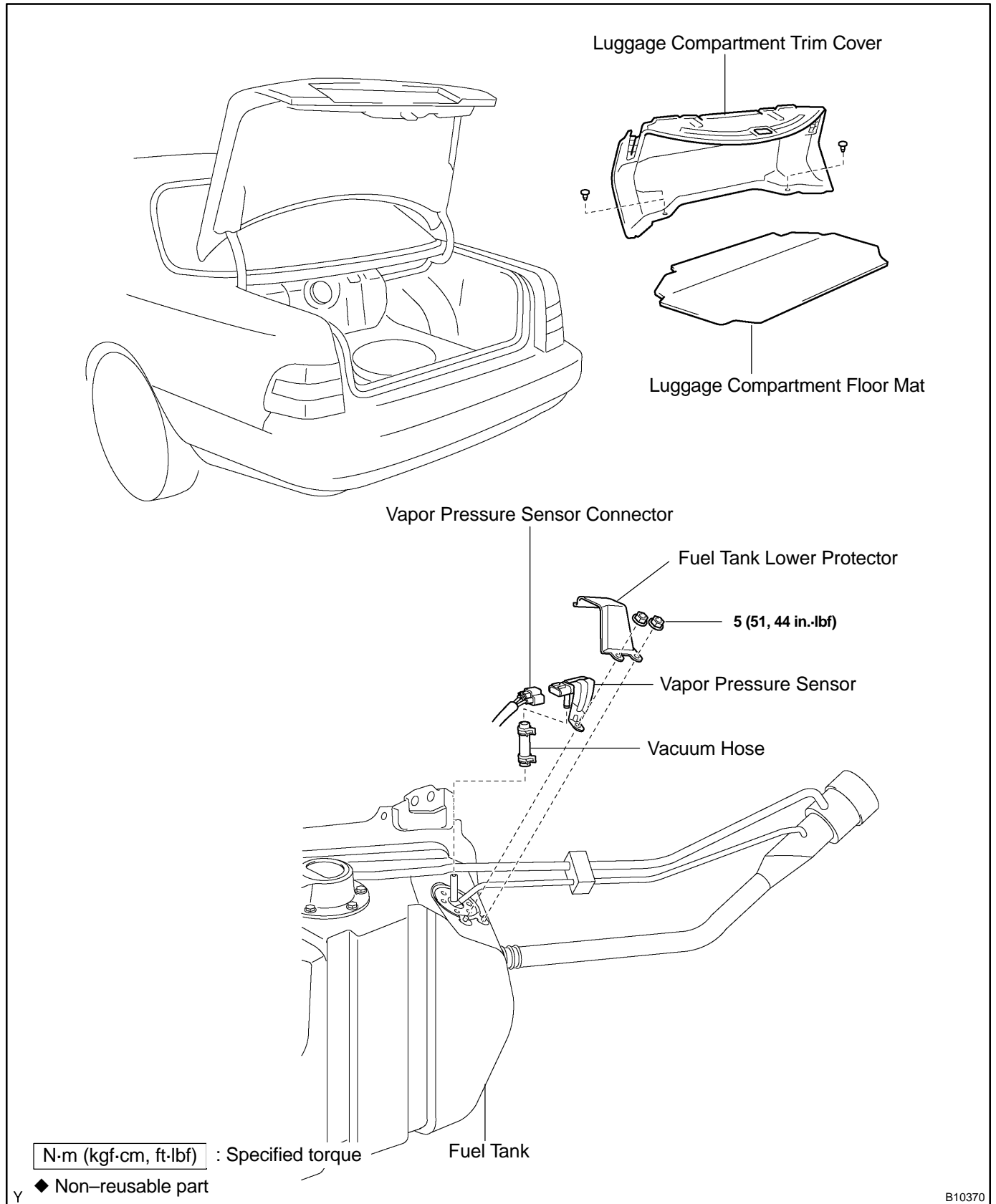
- (a) Inspect the fuel lines and connections for cracks, leakage or deformation.
- (b) Inspect the fuel tank vapor vent system hoses and connections for looseness, kinks or damage.
- (c) Inspect the fuel tank for deformation, cracks, fuel leakage or tank band looseness.
- (d) Check the filter neck for damage or fuel leakage.
- (e) Hose and tube connections are as shown in the illustration.

If the problem is found, repair or replace the parts as necessary.



# VAPOR PRESSURE SENSOR COMPONENTS

SF198-01



B10370