

RELAY

HEATER MAIN RELAY REMOVAL

ACORS-06

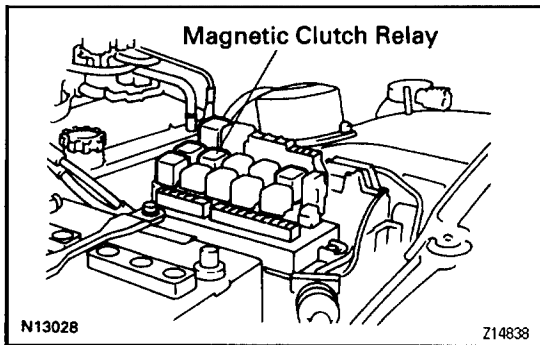
Installation is in the reverse order of removal.

REMOVE HEATER MAIN RELAY FROM ENGINE ROOM J/B No.1

HEATER MAIN RELAY INSPECTION

ACORT-05

(See page [AC-73](#))



MAGNETIC CLUTCH RELAY REMOVAL

ACORY-02

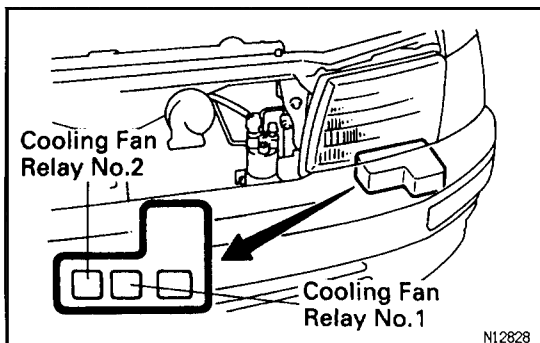
Installation is in the reverse order of removal.

REMOVE MAGNETIC CLUTCH RELAY FROM ENGINE ROOM J/B No.1

MAGNETIC CLUTCH RELAY INSPECTION

ACORZ-02

(See page [AC-80](#))

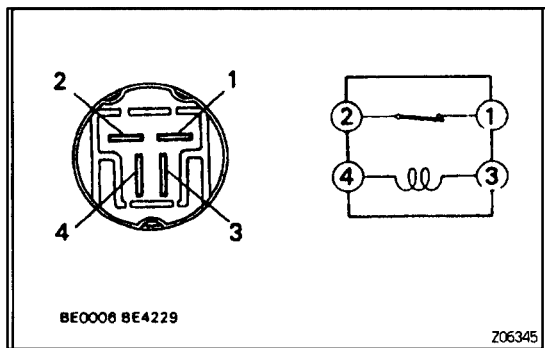


COOLING FAN RELAYS No. 1 and No. 2 REMOVAL

AC1MR-01

Installation is in the reverse order of removal.

1. REMOVE HEADLIGHT LEFT SIDE
(See page [BO-11](#))
2. REMOVE FAN RELAYS FROM ENGINE ROOM J/B No. 2



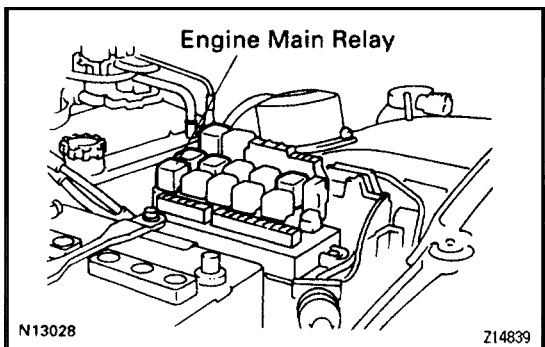
COOLING FAN RELAYS INSPECTION

AC1MS-01

1. INSPECT COOLING FAN RELAY NO. 1 AND NO. 2 CONTINUITY

Condition	Tester connection to terminal number	Specified condition
Constant	1-2 3-4	Continuity
Apply B+ between terminals 3 and 4.	-	No continuity

If continuity is not as specified, replace the relays.

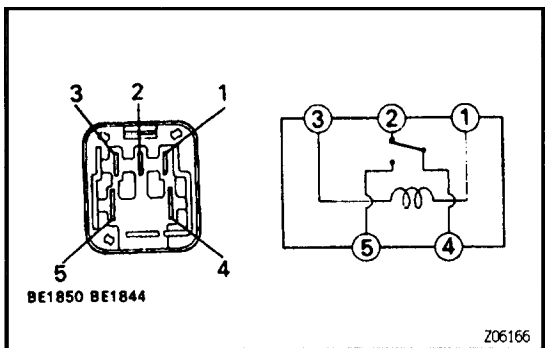


ENGINE MAIN RELAY REMOVAL

AC1MT-01

Installation is in the reverse order of removal.

REMOVE ENGINE MAIN RELAY FROM ENGINE ROOM J/B No.1



ENGINE MAIN RELAY INSPECTION

AC1MU-01

INSPECT ENGINE MAIN RELAY CONTINUITY

Condition	Tester connection to terminal number	Specified condition
Constant	1-3 2-4	Continuity
Apply B+ between terminal 1 and 3	4-5	Continuity

If continuity is not as specified, replace the relay.