

DISASSEMBLY

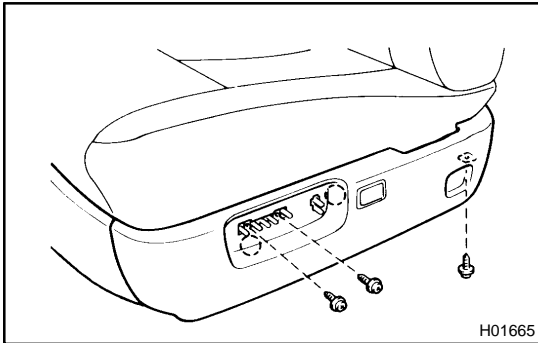
1. REMOVE FIRST AID KIT

2. REMOVE FRONT SEAT CUSHION SHIELD

- (a) Using a screwdriver, remove the 2 switch knobs.

HINT:

Tape the screwdriver tip before use.



- (b) Remove the 3 screws from the outside of cushion shield.
 (c) Remove the 3 screws from the front side of cushion shield.
 (d) Remove the cushion shield, then disconnect the connectors.
 (e) Remove the 2 screws and lumber support switch from cushion shield.

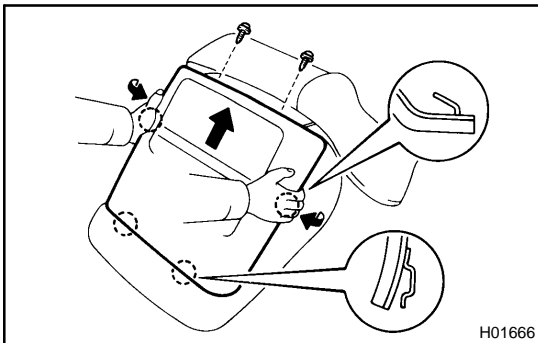
3. REMOVE FRONT SEAT INNER BELT

Disconnect the connector, then remove the bolts and inner belt.

Torque: 43 N·m (440 kgf·cm, 32 ft·lbf)

4. REMOVE FRONT SEATBACK BOARD

- (a) Remove the 2 screws.
 (b) Push the board as shown in the illustration with your hands.
 (c) Slide the board upward to remove it.



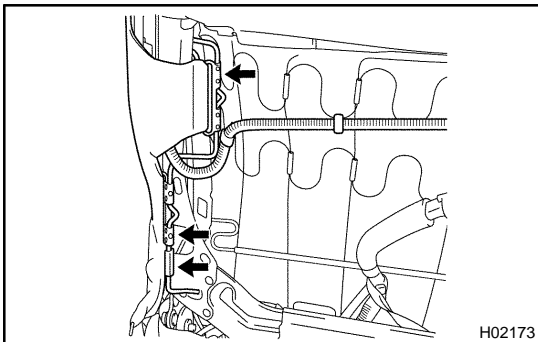
5. REMOVE SIDE AIRBAG ASSEMBLY

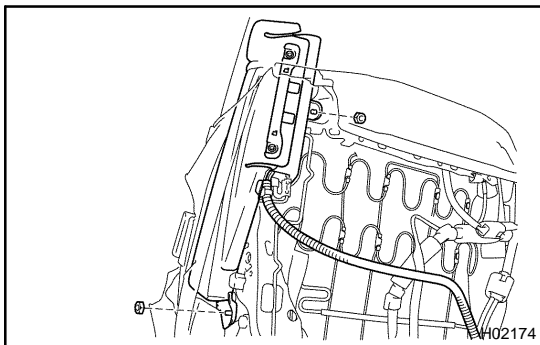
- (a) Remove the 2 yellow hooks and a black hook at the position shown in the illustration.

CAUTION:

At the time of assembly, please refer to the following item. Hang the seat cover hook securely to the fitting, or the side airbag does not operate correctly.

- (b) Remove the 2 clamps from wire harness of side airbag installed under the seat, then pull out the wire harness.
 (c) Remove the side airbag connector from the bracket under the seat.

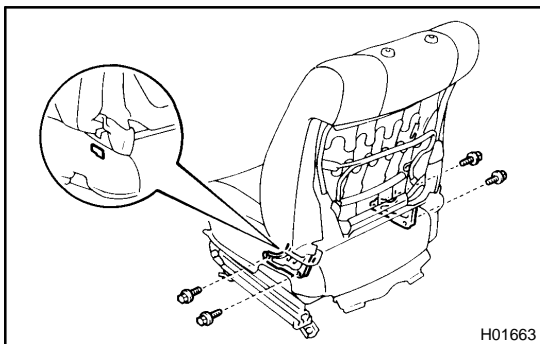




- (d) Remove the 2 nuts at the position shown in the illustration and remove the side airbag assembly.
Torque: 9.0 N·m (92 kgf·cm, 7 ft·lbf)

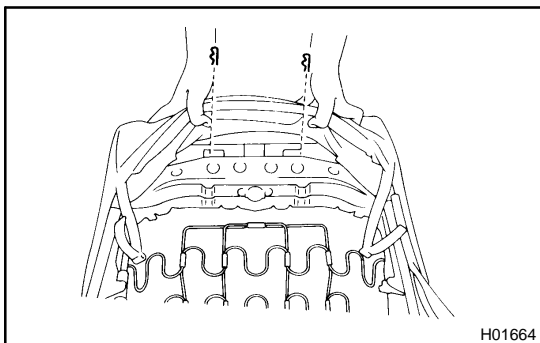
CAUTION:

- Do not store the side airbag assembly with the airbag deployment side facing down.
- Never disassemble the side airbag assembly.

**6. REMOVE SEATBACK ASSEMBLY**

Remove the 4 bolts and seatback assembly.

Torque: 18 N·m (185 kgf·cm, 13 ft·lbf)

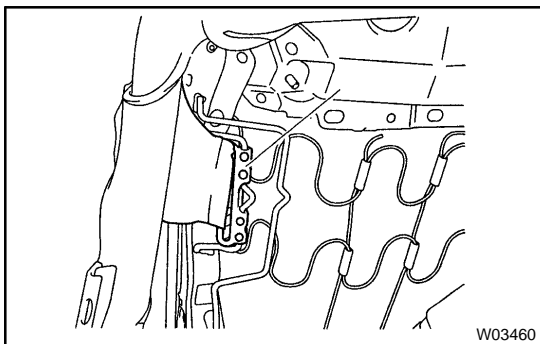
**7. w/ Power Headrest:****REMOVE HEADREST**

- (a) Remove the hog rings from the seatback assembly.
 (b) Using a screwdriver, remove the 2 pins shown in the illustration.

HINT:

After the headrest has been removed, install the pins to the adjuster temporarily.

- (c) Remove the headrest from the seatback assembly.

**8. REMOVE SEATBACK COVER**

- (a) Remove the hook.
- The position shown in the illustration is made to be hold by installing the side airbag assembly with the hook shown as "A" hung onto the seat frame.

CAUTION:

At the time of assembly, please refer to the following item. Take care to hung the hook securely. Otherwise the seat cover slides, it might cause incorrect deploying.

- (b) Remove the seatback frame from the seatback cover with pad.
 (c) Remove the seatback cover from the seatback pad.

9. REMOVE THESE PARTS:

- (a) Lumber support adjuster
- (b) Reclining motor
- (c) Inner reclining adjuster
- (d) Reclining connecting pipe
- (e) Outer reclining adjuster
- (f) headrest motor

10. REMOVE SEAT CUSHION ASSEMBLY

Remove the 4 bolts and seat cushion assembly.

Torque: 18 N·m (185 kgf-cm, 13 ft-lbf)

11. REMOVE SEAT CUSHION COVER

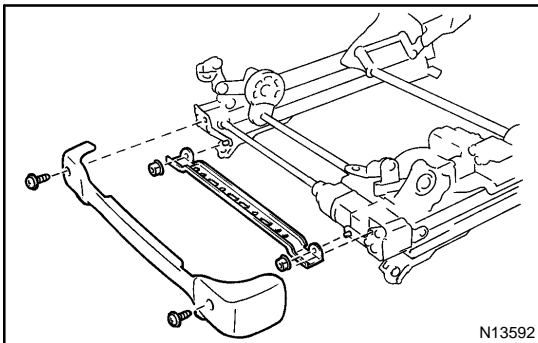
- (a) Remove the seat cushion frame from the seat cushion cover with pad.
- (b) Remove the power seat switch from the seatback frame.
- (c) Remove the seat cushion cover from the seat cushion pad.

12. REMOVE THESE PARTS:

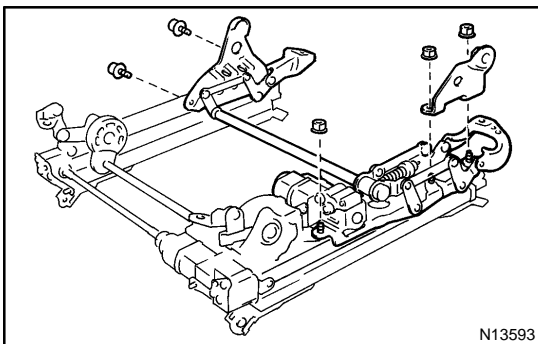
- (a) Power seat ECU
- (b) First aide kit frame
- (c) Wire harness

13. REMOVE POWER SEAT REGULATOR SHIELD AND SLIDE MOTOR SUPPORT BRACKET

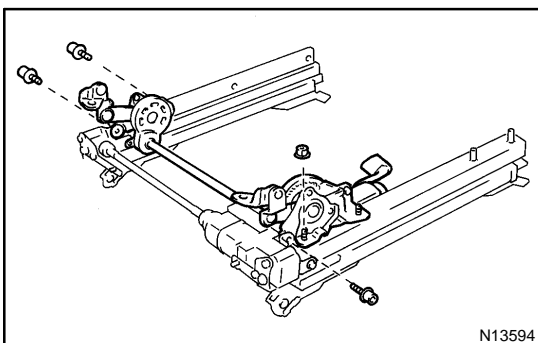
- (a) Remove the 2 screws and regulator shield.
- (b) Remove the 2 nuts and support bracket.

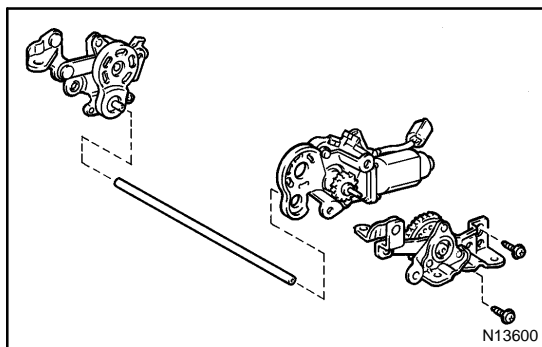
**14. REMOVE REAR VERTICAL ASSEMBLY**

- (a) Remove the 2 bolts from the rear vertical assembly inner side.
- (b) Remove the 3 nuts and bracket from the rear vertical assembly outer side.
- (c) Remove the rear vertical motor assembly.

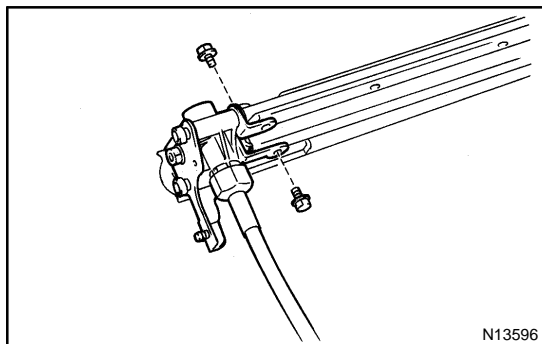
**15. REMOVE FRONT VERTICAL ASSEMBLY**

- (a) Using a torx wrench, remove the 3 screws.
- (b) Remove the nut and front vertical assembly.



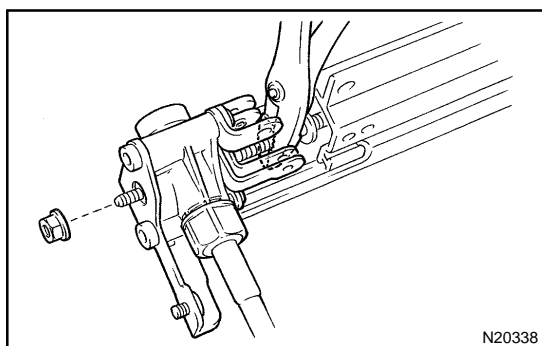


- (c) Remove these parts:
- (1) Inner front vertical sub-assembly
 - (2) Outer front vertical sub-assembly
 - (3) Front vertical motor
 - (4) Front vertical connecting pipe



16. REMOVE SLIDE MOTOR HOUSING ASSEMBLY

- (a) Remove the 2 bolts from the inner seat track.



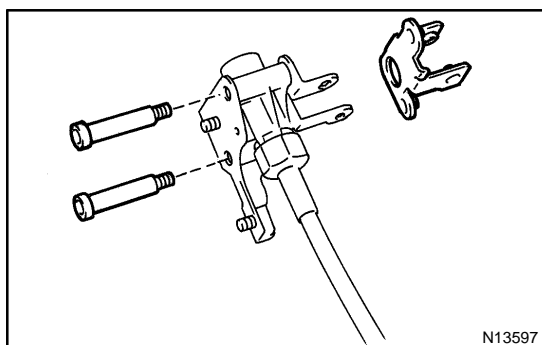
- (b) Move the upper rail rearward and hold the screw shaft with pliers.

- (c) Remove the nut.

HINT:

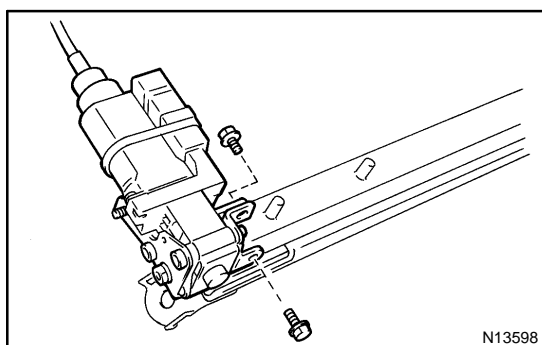
At the time of reassembly, please refer to the following item.
Apply adhesive to 3 screws.

Part No.08833-00070, THREE BOND 1324 or equivalent.



- (d) Using a hexagon wrench, remove the 2 screws.

- (e) Remove the inner bracket from the slide motor housing assembly.



- (f) Remove the 2 bolts from the outer set track.

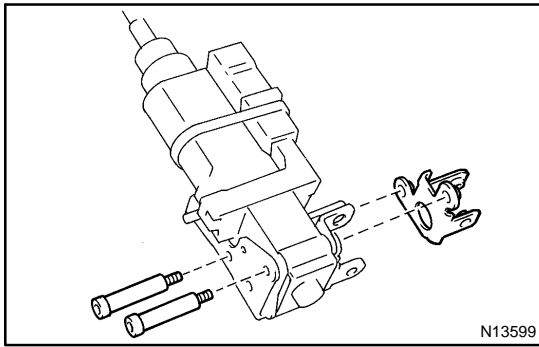
- (g) Move the upper rail rearward and hold the screw shaft with pliers.

- (h) Remove the nut and washer.

HINT:

At the time of reassembly, please refer to the following item.
Apply adhesive to nut.

Part No.08833-00070, THREE BOND 1324 or equivalent.



- (i) Using a hexagon wrench, remove the 2 screws.
- (j) Remove the outer bracket from the slide motor housing assembly.