

DTC	B2417	HEADLIGHT BEAM LEVEL CONTROL MOTOR LH MALFUNCTION
------------	--------------	--

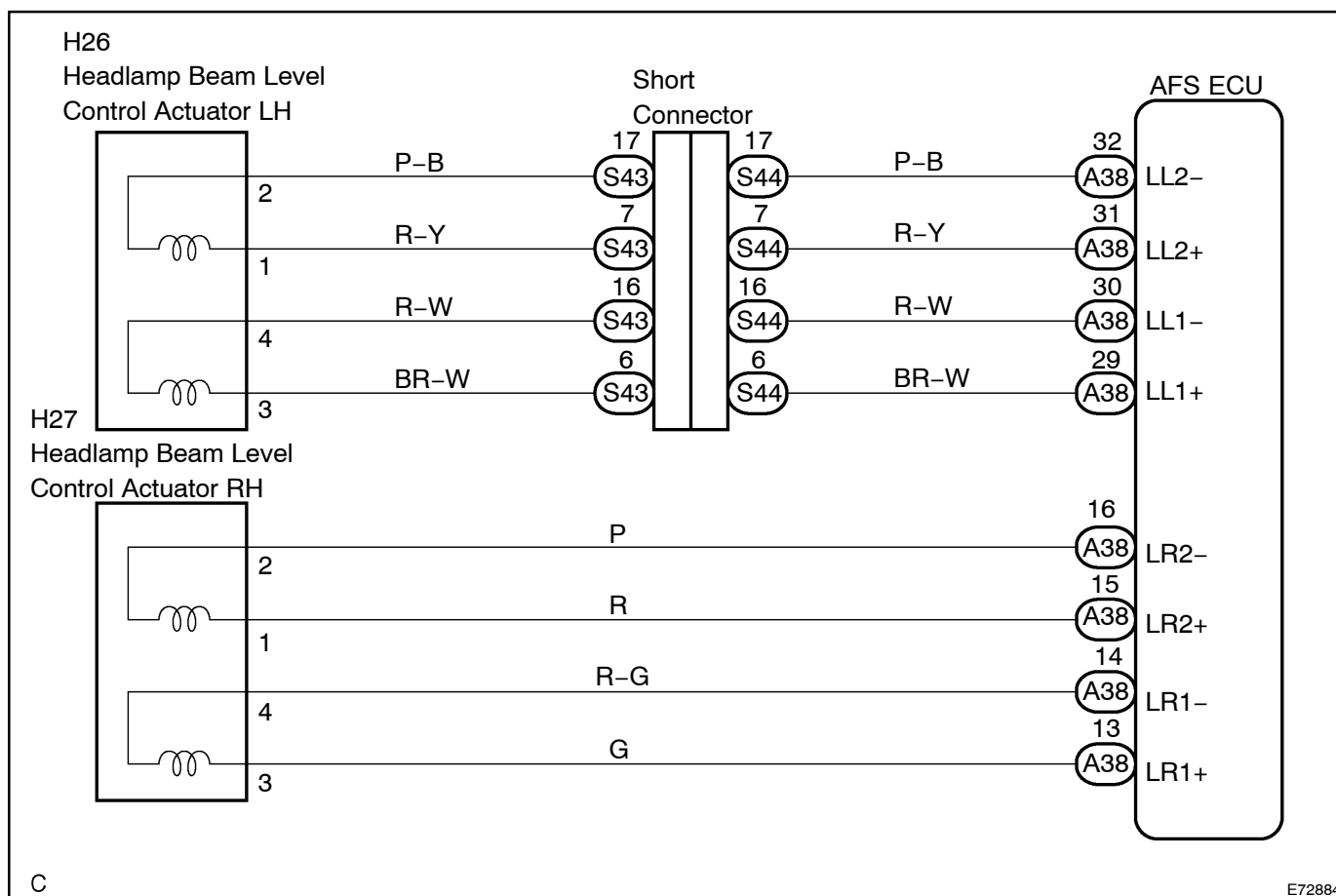
DTC	B2418	HEADLIGHT BEAM LEVEL CONTROL MOTOR RH MALFUNCTION
------------	--------------	--

CIRCUIT DESCRIPTION

The leveling actuator receives the signal from the AFS ECU to operate. The AFS ECU receives signals regarding the operating conditions of the leveling actuator.

DTC No.	DTC Detecting Condition	Trouble Area
B2417	<ul style="list-style-type: none"> Malfunction in headlamp beam level control motor LH Open or short in headlamp beam level control motor LH circuit 	<ul style="list-style-type: none"> Headlamp beam level control motor LH Wire harness or connector AFS ECU
B2418	<ul style="list-style-type: none"> Malfunction in headlamp beam level control motor RH Open or short in headlamp beam level control motor RH circuit 	<ul style="list-style-type: none"> Headlamp beam level control motor RH Wire harness or connector AFS ECU

WIRING DIAGRAM



C

E72884

INSPECTION PROCEDURE

1 PERFORM ACTIVE TEST USING HAND-HELD TESTER

- (a) Connect the hand-held tester to the DLC3.
- (b) Turn the ignition switch to the ON position and turn the hand-held tester main switch on.
- (c) Select the item below in the ACTIVE TEST and then check the motor operation.

AFS (AFS ECU):

Item	Test Details	Diagnostic Note
LEVEL CONTROL MTR	Drive the leveling motor UP/DOWN	-

OK: Headlamp beam leveling control actuator is operated.

Result:

OK (When checking from the PROBLEM SYMPTOMS TABLE)	A
OK (When checking from the DIAGNOSTIC TROUBLE CODE CHART)	B
NG	C

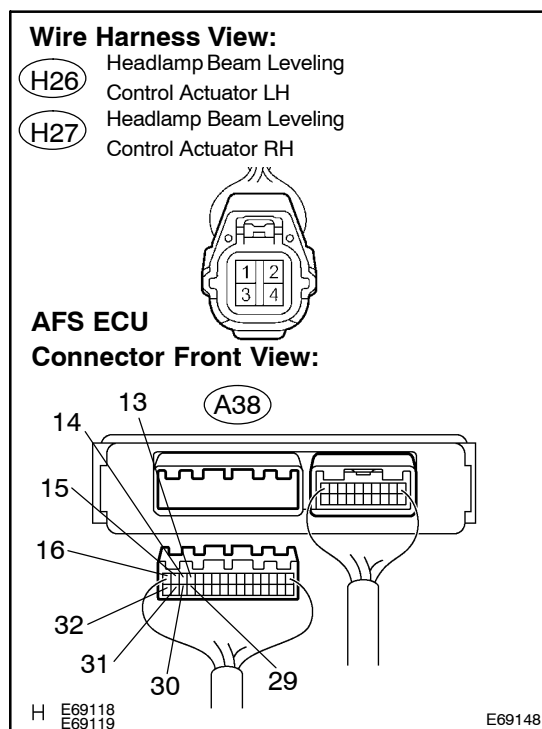
B → REPLACE AFS ECU (SEE PAGE [65-26](#))

C → Go to step 2

A

**PROCEED TO NEXT CIRCUIT INSPECTION SHOWN IN PROBLEM SYMPTOMS TABLE
(SEE PAGE [05-1476](#))**

2 CHECK HARNESS AND CONNECTOR(HEADLIGHT BEAM LEVEL CONTROL MOTOR - AFS ECU)



- Disconnect the headlamp assy connector on the headlamp beam level control motor side and A38 connector from the AFS ECU.
- Measure the resistance according to the value(s) in the table below.

Standard:

LH Side (B2417):

Tester Connection	Condition	Specified Condition
A38-29 - H26-3	Always	Below 1 Ω
A38-30 - H26-4	Always	Below 1 Ω
A38-31 - H26-1	Always	Below 1 Ω
A38-32 - H26-2	Always	Below 1 Ω
A38-29 - Body ground	Always	10 k Ω or higher
A38-30 - Body ground	Always	10 k Ω or higher
A38-31 - Body ground	Always	10 k Ω or higher
A38-32 - Body ground	Always	10 k Ω or higher

RH Side (B2418):

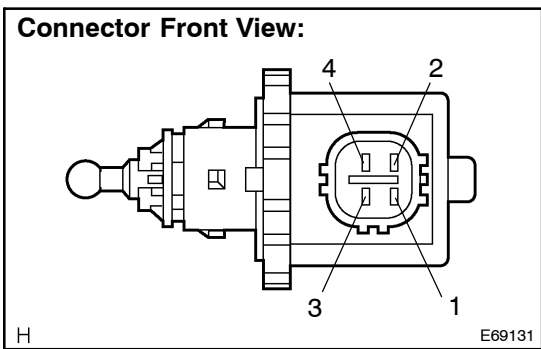
Tester Connection	Condition	Specified Condition
A38-13 - H27-3	Always	Below 1 Ω
A38-14 - H27-4	Always	Below 1 Ω
A38-15 - H27-1	Always	Below 1 Ω
A38-16 - H27-2	Always	Below 1 Ω
A38-13 - Body ground	Always	10 k Ω or higher
A38-14 - Body ground	Always	10 k Ω or higher
A38-15 - Body ground	Always	10 k Ω or higher
A38-16 - Body ground	Always	10 k Ω or higher

NG

REPAIR OR REPLACE HARNESS OR CONNECTOR

OK

3 INSPECT HEADLIGHT BEAM LEVEL CONTROL MOTOR



(a) Measure the resistance according to the value(s) in the table below.

Standard:

LH Side (B2417):

Tester connection	Condition	Specified condition
H26-1 - H26-2	Always	5.8 to 12.5 Ω
H26-3 - H26-4	Always	5.8 to 12.5 Ω

RH Side (B2418):

Tester connection	Condition	Specified condition
H27-1 - H27-2	Always	5.8 to 12.5 Ω
H27-3 - H27-4	Always	5.8 to 12.5 Ω

Result:

OK (When checking from the DIAGNOSTIC TROUBLE CODE CHART)	A
OK (When checking from the PROBLEM SYMPTOMS TABLE)	B
NG	C

B PROCEED TO NEXT CIRCUIT INSPECTION SHOWN IN PROBLEM SYMPTOMS TABLE (SEE PAGE 05-1476)

C REPLACE HEADLAMP ASSY (SEE PAGE 65-9)

A

REPLACE AFS ECU (SEE PAGE 65-26)