

DYNAMIC RADAR CRUISE CONTROL

The millimeter wave radar sensor in this system primarily detects the reflected wave from the rear end of the vehicle ahead of you to determine the presence of the vehicle ahead as well as measuring the vehicle-to-vehicle distance. The detection range of the sensor is about 120 m (400 ft.) ahead.

- If no vehicle is detected ahead of you:
 - Your cruising speed is maintained at the preset speed from about 45 km/h (28 mph) to about 135 km/h (85 mph).
- If a vehicle is detected ahead of you:
 - Your cruising speed changes in proportion to the speed of the vehicle ahead to maintain an appropriate distance from your vehicle to the vehicle ahead.
 - If the vehicle ahead is out of the detection range, your cruising speed will be gradually increased up to the preset speed, and your vehicle resumes fixed-speed cruising.
 - If the vehicle ahead decelerates abruptly or other vehicles cut in ahead of you, your vehicle may be too close to the vehicle ahead of you. If this occurs, the multi-information display flashes and beeps. (Approach warning)



The dynamic radar cruise control should be used on roads in which sufficient vehicle-to-vehicle distance will be ensured (such as on freeways).

■ Operation Requirements

Cruising from about 45 km/h (28 mph) to about 135 km/h (85 mph)



The wipers are operating at low speed and operating intermittently (including the same wiper operation in the "AUTO" position).

The driving pattern selector switch is set in the power or normal position.

The automatic transmission selector lever is in the "D", "6" (sixth range), "5" (fifth range) or "4" (fourth range) position.

Even if these requirements are met, the system may not operate properly under certain conditions such as bad weather. See "Owner's Manual" for details.

See Owner's Manual for Complete Information.

Dynamic Radar Cruise Control

2

■ Cautions

- **Do not rely too much on dynamic radar cruise control. Vehicle-to-vehicle distance control has its limitations.**

Always remain aware of the distance from the vehicle ahead and other vehicles. If necessary, depress the brake pedal to ensure sufficient distance.

- **Dynamic radar cruise control is not a collision-avoidance system.**

If necessary, depress the brake pedal to ensure sufficient distance.

- **Dynamic radar cruise control should not be used in the following conditions:**

- In bad weather (such as rain, fog, snow, sandstorms)
- Raindrops or snowflakes get in the millimeter wave radar sensor or the grille cover
- On the roads in heavy traffic or at sharp bends
- On slippery road surfaces (icy or snow-covered road surfaces)
- On steep downhill slopes
- Acceleration or deceleration must be repeated
- On roads with steep and short inclines and declines

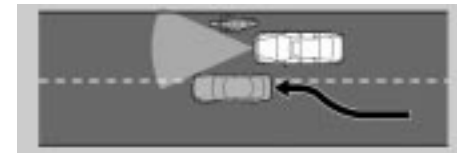
In any conditions of the above, an appropriate vehicle-to-vehicle distance control may not be attained.

- **This system is not provided to justify careless driving.**

Always remain aware of the distance from the vehicle ahead and other vehicles.

- **The dynamic radar cruise control should not be used when exiting from, or when entering or merging onto a freeway.**

When you are following a slower moving vehicle and exiting, the sensor does not detect the vehicle and will accelerate to preset speed.



■ Cautions

- **If other vehicles are driving outside of the millimeter wave radar detection range, a delay in the detection of the vehicle cutting in at short range or detection failure of the motorcycle running on the side of the same lane will occur. In this case, the dynamic radar cruise control system will not function properly.**
- **The distance between your vehicle and the vehicle ahead cannot be accurately detected in the following cases:**
 - The vehicle ahead or other vehicles around you are flinging up water or snow.
 - Heavy luggage is loaded in your trunk or on top of your rear seats, or is raising up the nose of your vehicle.
 - The rear section of the vehicle ahead is extremely small such as an unloaded trailer.
- **The millimeter wave radar sensor automatically detects dirt if it is sticking to the front of the sensor or grille cover of your vehicle.**

However, in some cases dirt may not be detected and an appropriate vehicle-to-vehicle distance cannot be maintained. Continue driving with due care to the vehicle ahead.
- **Dynamic radar cruise control does not operate when the vehicle is at a stop or is driving very slowly.**
 - Pay special attention to the very slow vehicle at the end of the line in heavy traffic or at the toll gate.
- **Turn off the main switch when dynamic radar cruise control is not in use.**
- **The approach warning may not turn on even if the the vehicle drives closer to the vehicle ahead in the following conditions:**
 - Your vehicle and the vehicle ahead are cruising at almost the same speed.
 - The vehicle ahead is cruising at a faster speed than yours. (The distance between the vehicles will become longer.)
 - The accelerator pedal is depressed, immediately after the release of the accelerator pedal or immediately after the speed setting.
- **Depending on the road configuration (curved roads) or your vehicle condition (steering wheel maneuvering, position in the lane), vehicles in other lanes or surrounding objects will be detected.**

See Owner's Manual for Complete Information.

■ Warning Display

If there is trouble somewhere in the dynamic radar cruise control while the vehicle-to-vehicle distance control mode is on, the “CRUISE” indicator light in the instrument cluster flashes, the master warning light comes on and the warning tone sounds, and one or more of the warning messages will appear on the multi-information display.



Warning message

- “Clean Radar Sensor”
- “Cruise not Available”
- “Check Cruise System”

If any warning message shown above appears, the preset speed automatically cancels out.

If a warning message appears on the display, take the appropriate measure referring to Section 3-1, “Owner’s Manual”.

■ Approach Warning

Dynamic radar cruise control and approach warning do not operate when the vehicle ahead is at a stop or is driving much slower than your vehicle. Use caution for the vehicle at the end of the line in heavy traffic or at the tollgate, the vehicle at a stop and the very slow vehicle.

If your vehicle approaches the vehicle ahead because of insufficient braking when the vehicle ahead decelerates abruptly or when another vehicle cuts in ahead of you, the multi-information display flashes and beeps. Depress the brake pedal to slow down, ensuring sufficient vehicle-to-vehicle distance.



■ Operation Procedure

The operation procedure is shown as follows. For the detailed information, see Section 3-1 in the “Owner’s Manual”.

● Setting

- 1 Push the main switch to turn on the system. The “CRUISE” indicator light in the instrument cluster comes on and “RADAR READY” appears on the multi-information display.



- 2 Depress the accelerator or brake pedal to attain the desired speed.
- 3 Press the control lever downward in the “SET/COAST” direction and release it. This sets the vehicle at that speed.



If a vehicle is detected ahead of you: Your cruising speed changes in proportion to the speed of the vehicle ahead to maintain an appropriate distance from your vehicle to the vehicle ahead. If there was no vehicle ahead, your cruising speed will be gradually increased up to the preset speed.

If no vehicle is detected ahead of you: Your cruising speed is maintained at the preset speed.

● Cancelling

To stop the operation: Push the main switch to turn off.

To stop the operation temporarily:
Pull the control lever in the “CANCEL” direction.

To resume follow-up cruising or cruising at fixed speed, press the control lever upward and release it.



See Owner’s Manual for Complete Information.

■ Operation Procedure

● Acceleration/Deceleration

To accelerate: Depress the accelerator pedal. (When you release the accelerator pedal, follow-up cruising or fixed speed cruising resumes.) If there was no vehicle ahead, the vehicle will accelerate gradually to the preset speed. At this time, depressing the accelerator pedal will accelerate quickly.

To decelerate: Depress the brake pedal. (Even when you release the brake pedal, dynamic radar cruise control does not return to follow-up cruising or fixed speed cruising. Press the control lever upward to resume follow-up-cruising or fixed speed cruising.)

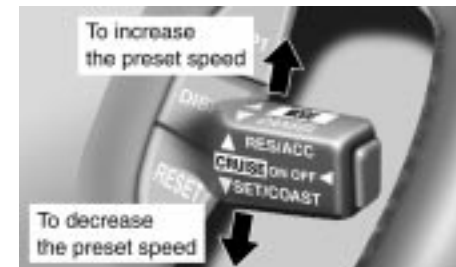
● Changing the preset speed

Using the control lever:

- 1 Press the control lever upward or downward.
 - Press the control lever upward in the "RES/ACC" direction to increase the preset speed. The displayed speed will increase in increments of 5 mph (for U.S.A) or 5 km/h (for Canada).
 - Press the control lever downward in the "SET/COAST" direction to decrease the preset speed. The displayed speed will decrease in decrements of 5 mph (for U.S.A.) or 5 km/h (for Canada).
- 2 Release the control lever when the multi-information display shows the desired preset speed.

Using the accelerator and brake pedals:

- 1 When using the accelerator pedal, you need to cancel the preset speed once.
- 2 Depress the accelerator or brake pedal to attain the desired speed.
- 3 Press the control lever downward in the "SET/COAST" direction and release the lever.



■ Operation Procedure

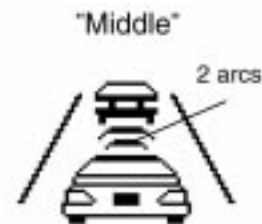
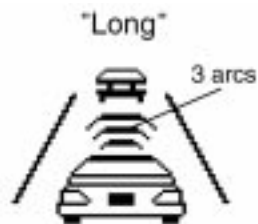
● To restore the previous control

If the preset speed has been cancelled, when you press the lever upward in the "RES/ACC" direction while "RADAR READY" shows up on the multi-information display and at a vehicle speed of about more than 40 km/h (25 mph), the speed set prior to cancellation will be restored.



● Changing vehicle-to-vehicle distance setting

You can select one of the following vehicle-to-vehicle distances: "Long", "Middle" or "Short". Each time you push the "DISP2" switch briefly, the setting changes from "Long" to "Middle" to "Short" and then back to "Long". You can confirm the setting on the multi-information display.



See Owner's Manual for Complete Information.

Dynamic Radar Cruise Control

9

In addition to the vehicle-to-vehicle distance control mode described in this quick reference guide, dynamic radar cruise control has conventional (fixed speed) cruise control mode for cruising at fixed speeds. For the conventional (fixed speed) cruise control mode, see Section 3-1 in the “Owner’s Manual”.

- **Changing to the conventional (fixed speed) control mode**

- 1 Push the main switch to turn on the system. The “CRUISE” indicator light in the instrument cluster comes on and “RADAR READY” appears on the multi-information display.



- 2 Push the control lever in the “MODE” direction for longer than 1 second to change to the fixed speed control mode.






- **Each mode display**

The control system in the vehicle-to-vehicle distance control mode differs from the one in the conventional (fixed speed) cruise control mode.

When using dynamic radar cruise control, make sure which mode is selected.

Multi-information display:

	Vehicle-to-V ehicle Distance Control Mode	Fixed Speed Control Mode
In Ready State		No display
In Control		

DYNAMIC LASER CRUISE CONTROL

The laser radar sensor in this system primarily detects the reflectors of the vehicle ahead of you to determine the presence of the vehicle ahead as well as measuring the vehicle-to-vehicle distance. The detection range of the sensor is about 120 m (400 ft.) ahead.

- If no vehicle is detected ahead of you:
 - Your cruising speed is maintained at the preset speed from about 45 km/h (28 mph) to about 135 km/h (85 mph).
- If a vehicle is detected ahead of you:
 - Your cruising speed changes in proportion to the speed of the vehicle ahead to maintain an appropriate distance from your vehicle to the vehicle ahead.
 - If the vehicle ahead is out of the detection range, your cruising speed will be gradually increased up to the preset speed, and your vehicle resumes fixed-speed cruising.
 - If the vehicle ahead decelerates abruptly or other vehicles cut in ahead of you, your vehicle may be too close to the vehicle ahead of you. If this occurs, the multi-information display flashes and beeps. (Approach warning)



The dynamic laser cruise control should be used on roads in which sufficient vehicle-to-vehicle distance will be ensured (such as on freeways).

■ Operation Requirements

Cruising from about 45 km/h (28 mph) to about 135 km/h (85 mph)

The wipers are not operating at all or operating intermittently (including the same wiper operation in the "AUTO" position).

The driving pattern selector switch is set in the power or normal position.

The automatic transmission selector lever is in the "D", "6" (sixth range), "5" (fifth range) or "4" (fourth range) position.

Even if these requirements are met, the system may not operate properly under certain conditions such as bad weather. See "Owner's Manual" for details.

See Owner's Manual for Complete Information.

■ Cautions

● Do not rely too much on dynamic laser cruise control. Vehicle-to-vehicle distance control has its limitations.

Always remain aware of the distance from the vehicle ahead and other vehicles. If necessary, depress the brake pedal to ensure sufficient distance.

● Dynamic laser cruise control is not a collision-avoidance system.

If necessary, depress the brake pedal to ensure sufficient distance.

● Dynamic laser cruise control should not be used in the following conditions:

- In bad weather (such as rain, fog, snow, sandstorms)
- In direct sunlight from the front
- Raindrops or snowflakes get in the laser radar sensor glass
- On the roads in heavy traffic or at sharp bends
- On slippery road surfaces (icy or snow-covered road surfaces)
- On steep downhill slopes
- Acceleration or deceleration must be repeated
- On roads with steep and short inclines and declines

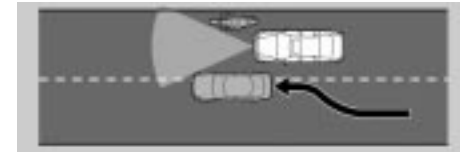
In any conditions of the above, an appropriate vehicle-to-vehicle distance control may not be attained.

● This system is not provided to justify careless driving.

Always remain aware of the distance from the vehicle ahead and other vehicles.

● The dynamic laser cruise control should not be used when exiting from, or when entering or merging onto a freeway.

When you are following a slower moving vehicle and exiting, the sensor does not detect the vehicle and will accelerate to preset speed.



■ Cautions

- **If other vehicles are driving outside of the laser radar detection range, a delay in the detection of the vehicle cutting in at short range or detection failure of the motorcycle running on the side of the same lane will occur. In this case, the dynamic laser cruise control system will not function properly.**
- **The distance between your vehicle and the vehicle ahead cannot be accurately detected in the following cases:**
 - The vehicle ahead has higher ground clearance, which means that the placement of the reflectors is in a higher position.
 - The rear section of the vehicle ahead is extremely dirty.
 - The vehicle ahead or other vehicles around you are flinging up water or snow.
 - Excessive exhaust gas (black smoke) is coming from the vehicle ahead or other vehicles around you, obscuring your front view.
 - Protective film is attached to the reflectors on the vehicle ahead, or reflectors are not installed on the vehicle ahead or are damaged.
 - Heavy luggage is loaded in your trunk or on top of your rear seats, or is raising up the nose of your vehicle.
- **The laser radar sensor automatically detects dirt if dirt is sticking to the sensor glass of your vehicle.**

However, in some cases dirt may not be detected and an appropriate vehicle-to-vehicle distance cannot be maintained. Continue driving with due care to the vehicle ahead.
- **Dynamic laser cruise control does not operate when the vehicle is at a stop or is driving very slowly.**
 - Pay special attention to the very slow vehicle at the end of the line in heavy traffic or at the toll gate.
- **Turn off the main switch when dynamic laser cruise control is not in use.**
- **The approach warning may not turn on even if the the vehicle drives closer to the vehicle ahead in the following conditions:**
 - Your vehicle and the vehicle ahead are cruising at almost the same speed.
 - The vehicle ahead is cruising at a faster speed than yours. (The distance between the vehicles will become longer.)
 - The accelerator pedal is depressed, immediately after the release of the accelerator pedal or immediately after the speed setting.
- **Depending on the road configuration (curved roads) or your vehicle condition (steering wheel maneuvering, position in the lane), vehicles in other lanes or surrounding objects will be detected.**

See Owner's Manual for Complete Information.

■ Warning Display

If there is trouble somewhere in the dynamic laser cruise control while the vehicle-to-vehicle distance control mode is on, the "CRUISE" indicator light in the instrument cluster flashes, the master warning light comes on and the warning tone sounds, and one or more of the warning messages will appear on the multi-information display.



Warning message
<ul style="list-style-type: none">• "Clean Radar Sensor"• "Cruise not Available"• "Check Cruise System"

If any warning message shown above appears, the preset speed automatically cancels out.

If a warning message appears on the display, take the appropriate measure referring to Section 3-1, "Owner's Manual".

■ Approach Warning

Dynamic laser cruise control and approach warning do not operate when the vehicle ahead is at a stop or is driving much slower than your vehicle. Use caution for the vehicle at the end of the line in heavy traffic or at the tollgate, the vehicle at a stop and the very slow vehicle.

If your vehicle approaches the vehicle ahead because of insufficient braking when the vehicle ahead decelerates abruptly or when another vehicle cuts in ahead of you, the multi-information display flashes and beeps. Depress the brake pedal to slow down, ensuring sufficient vehicle-to-vehicle distance.



■ Operation Procedure

The operation procedure is shown as follows. For the detailed information, see Section 3-1 in the “Owner’s Manual”.

● Setting

- ① Push the main switch to turn on the system. The “CRUISE” indicator light in the instrument cluster comes on and “RADAR READY” appears on the multi-information display.



- ② Depress the accelerator or brake pedal to attain the desired speed.
- ③ Press the control lever downward in the “SET/COAST” direction and release it. This sets the vehicle at that speed.



If a vehicle is detected ahead of you: Your cruising speed changes in proportion to the speed of the vehicle ahead to maintain an appropriate distance from your vehicle to the vehicle ahead. If there was no vehicle ahead, your cruising speed will be gradually increased up to the preset speed.

If no vehicle is detected ahead of you: Your cruising speed is maintained at the preset speed.

● Cancelling

To stop the operation: Push the main switch to turn off.

To stop the operation temporarily:
Pull the control lever in the “CANCEL” direction.

To resume follow-up cruising or cruising at fixed speed, press the control lever upward and release it.



See Owner’s Manual for Complete Information.

■ Operation Procedure

● Acceleration/Deceleration

To accelerate: Depress the accelerator pedal. (When you release the accelerator pedal, follow-up cruising or fixed speed cruising resumes.) If there was no vehicle ahead, the vehicle will accelerate gradually to the preset speed. At this time, depressing the accelerator pedal will accelerate quickly.

To decelerate: Depress the brake pedal. (Even when you release the brake pedal, dynamic laser cruise control does not return to follow-up cruising or fixed speed cruising. Press the control lever upward to resume follow-up-cruising or fixed speed cruising.)

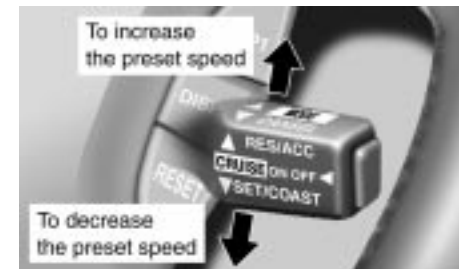
● Changing the preset speed

Using the control lever:

- ① Press the control lever upward or downward.
 - Press the control lever upward in the "RES/ACC" direction to increase the preset speed. The displayed speed will increase in increments of 5 mph (for U.S.A.) or 5 km/h (for Canada).
 - Press the control lever downward in the "SET/COAST" direction to decrease the preset speed. The displayed speed will decrease in decrements of 5 mph (for U.S.A.) or 5 km/h (for Canada).
- ② Release the control lever when the multi-information display shows the desired preset speed.

Using the accelerator and brake pedals:

- ① When using the accelerator pedal, you need to cancel the preset speed once.
- ② Depress the accelerator or brake pedal to attain the desired speed.
- ③ Press the control lever downward in the "SET/COAST" direction and release the lever.



■ Operation Procedure

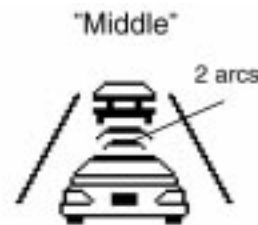
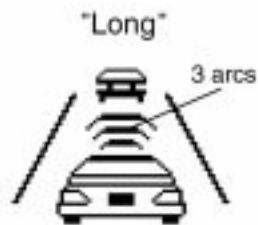
● To restore the previous control

If the preset speed has been cancelled, when you press the lever upward in the "RES/ACC" direction while "RADAR READY" shows up on the multi-information display and at a vehicle speed of about more than 40 km/h (25 mph), the speed set prior to cancellation will be restored.



● Changing vehicle-to-vehicle distance setting

You can select one of the following vehicle-to-vehicle distances: "Long", "Middle" or "Short". Each time you push the "DISP2" switch briefly, the setting changes from "Long" to "Middle" to "Short" and then back to "Long". You can confirm the setting on the multi-information display.



See Owner's Manual for Complete Information.

In addition to the vehicle-to-vehicle distance control mode described in this quick reference guide, dynamic laser cruise control has conventional (fixed speed) cruise control mode for cruising at fixed speeds. For the conventional (fixed speed) cruise control mode, see Section 3-1 in the “Owner’s Manual”.

● **Changing to the conventional (fixed speed) control mode**

- 1 Push the main switch to turn on the system. The “CRUISE” indicator light in the instrument cluster comes on and “RADAR READY” appears on the multi-information display.



- 2 Push the control lever in the “MODE” direction for longer than 1 second to change to the fixed speed control mode.



● **Each mode display**

The control system in the vehicle-to-vehicle distance control mode differs from the one in the conventional (fixed speed) cruise control mode. When using dynamic laser cruise control, make sure which mode is selected.

Multi-information display:

	Vehicle-to-V ehicle Distance Control Mode	Fixed Speed Control Mode
In Ready State		No display
In Control		