

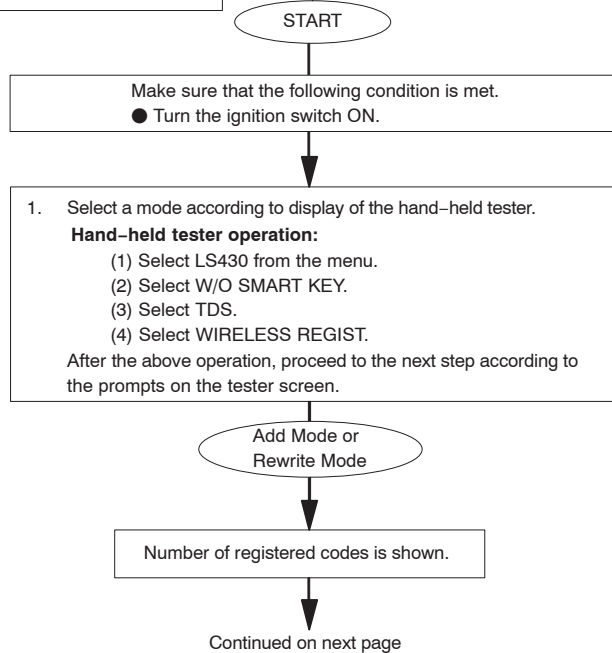
REGISTRATION

HINT:

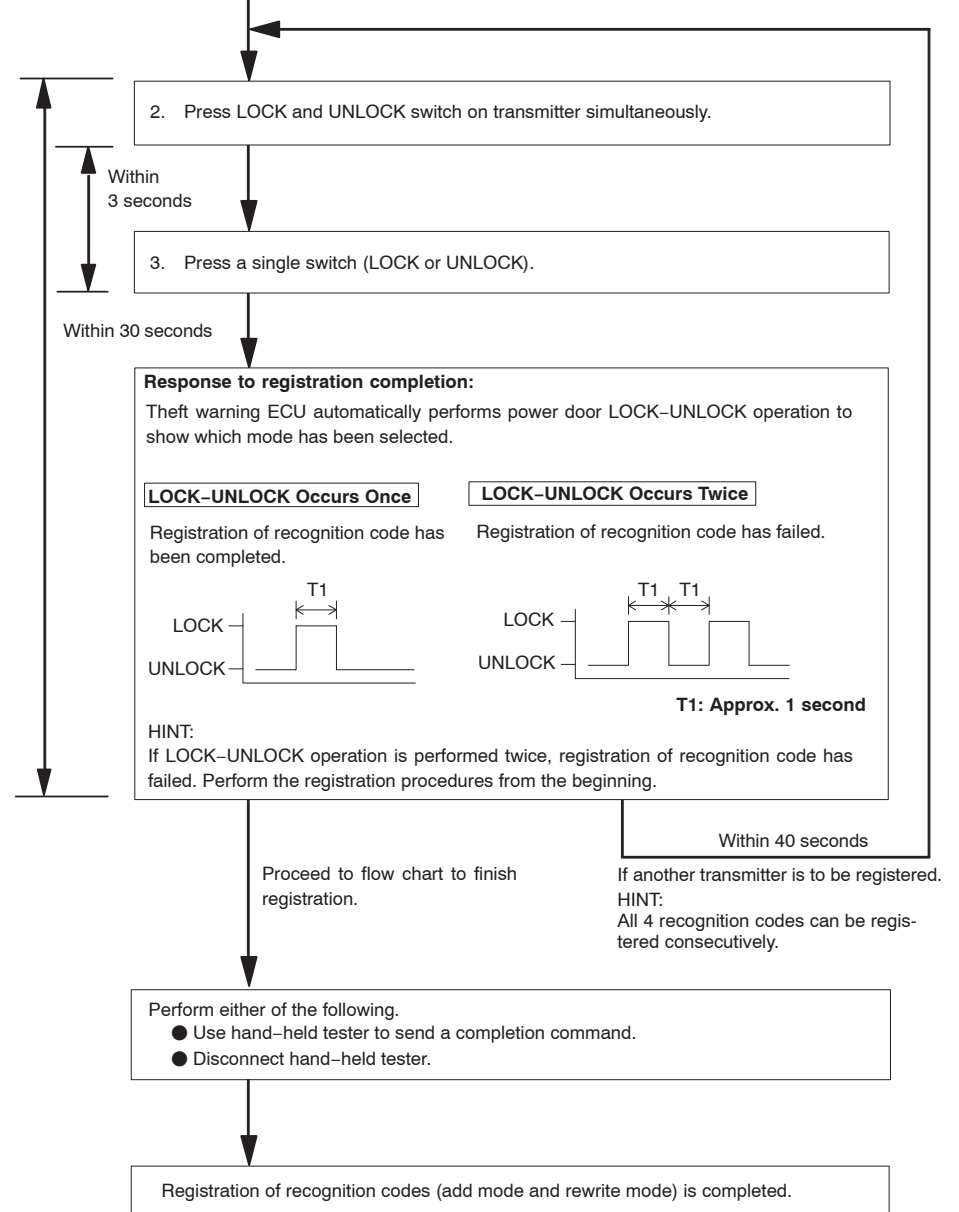
- Recognition code registration is necessary when replacing the door control transmitter or the door control receiver. The key has 2 codes: the key code (immobilizer code) and wireless code. All of these code types need to be registered. Refer to page 05-3027 for the key code (immobilizer code) registration procedures.
- Add mode is used to register new recognition codes while still retaining codes already registered. This mode is used when a new transmitter is added. If the number of registered codes exceeds 4, the previously registered codes will be erased, starting from the first registered code.
- Rewrite mode is used to erase all the previously registered recognition codes in order to register all-new recognition codes. This mode is used when the transmitter or the door control receiver is replaced.
- Confirmation mode is used to confirm how many recognition codes have already been registered before another recognition code is registered.
- Prohibition mode is used to erase all the registered codes and disable the wireless door lock function. This mode is used when the transmitter is lost.
- All of the following registration procedures must be performed in order.

1. REGISTER RECOGNITION CODE When using the hand-held tester

Flow Chart of Recognition Code Registration



Continued from previous page



2. REGISTER RECOGNITION CODE
When not using the hand-held tester

Flow Chart of Recognition Code Registration

START

- The following conditions should be met.
- No key in ignition key cylinder.
 - Driver side door is opened (other doors are closed).
 - Driver side door is unlocked.

1. Insert key into ignition key cylinder, then pull it out.

Within 5 seconds

2. Insert key into ignition key cylinder, then pull it out.

3. Close and open driver side door twice.

Within 40 seconds

4. Insert key into ignition key cylinder, then pull it out.

5. Close and open driver side door twice.

6. Insert key into ignition switch and close all doors.

Within 40 seconds

Continued on next page

Continued from previous page

Mode Selection:

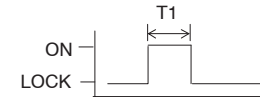
7. Turn ignition switch from LOCK to ON and back to LOCK at approximately 1 second intervals according to the number of times shown below.

Number of ON-LOCK operations of ignition switch:

Add Mode

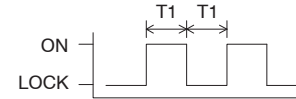
ON-LOCK operation: Once

T1: Approx. 1 second



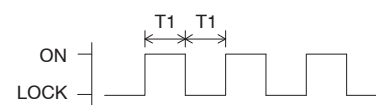
Rewrite Mode

ON-LOCK operation: Twice



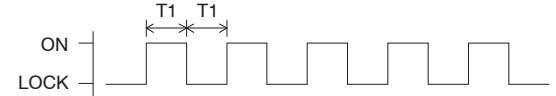
Confirmation Mode

ON-LOCK operation: 3 times



Prohibition Mode

ON-LOCK operation: 5 times



If the number of ignition switch ON-LOCK operations 0, 4, 6 or more, there will be no response (power door lock and unlock operation) to show which mode has been selected.

Within 40 seconds

8. Remove key from ignition key cylinder.

Within 3 seconds

Continued on next page

Continued from previous page

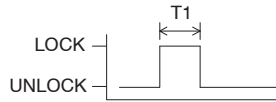
Within 3 seconds

Response to selected mode (Power door lock operation):

Theft warning ECU automatically performs power door LOCK-UNLOCK operation to inform which mode has been selected.

Add Mode

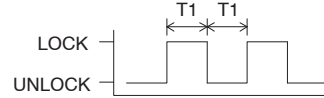
LOCK-UNLOCK operation: Once



T1: Approx. 1 second
T2: Approx. 2 seconds

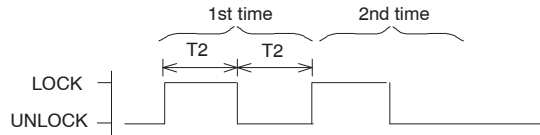
Rewrite Mode

LOCK-UNLOCK operation: Twice



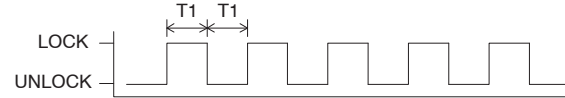
Confirmation Mode

LOCK-UNLOCK operation: The number of registered codes (1 to 5 times)



Prohibition Mode

LOCK-UNLOCK operation: 5 times



HINT:

- In confirmation mode, when LOCK/UNLOCK operation is performed twice, the number of registered recognition codes is 2.
- In confirmation mode, when 0 codes are registered, LOCK/UNLOCK operation is automatically performed 5 times.

Add Mode or Rewrite Mode

Confirmation Mode and Prohibition Mode

Continued on next page

Registration procedures are completed.

Within 40 seconds

Continued from previous page

Within 40 seconds

Within 5 seconds

Within 3 seconds

9. Press LOCK and UNLOCK switch on transmitter simultaneously.

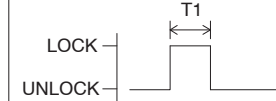
10. Press a single switch (LOCK or UNLOCK).

Response to registration completion:

Theft warning ECU automatically performs power door LOCK-UNLOCK operation to show whether registration has been completed correctly or not.

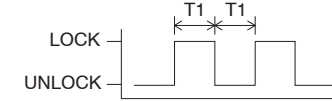
LOCK-UNLOCK Occurs Once

Registration of recognition code has been completed.



LOCK-UNLOCK Occurs Twice

Registration of recognition code has failed.



T1: Approx. 1 second

HINT:

If LOCK-UNLOCK operation is performed twice, registration of recognition code has failed. Perform the registration procedures from the beginning.

Proceed to flow chart to finish registration.

Within 40 seconds

If another transmitter is to be registered.
HINT:
All 4 recognition codes can be registered consecutively.

Perform either of the following.

- Open a door.
- Insert key into ignition key cylinder.

Registration of recognition codes (add mode and rewrite mode) is completed.

REGISTRATION

HINT:

The key has 2 codes: the key code (immobilizer code) and wireless code. All of these code types need to be registered. Refer to page 05-2692 for the wireless code registration procedures.

1. DESCRIPTION OF CODE REGISTRATION

(a) When adding master keys and sub-keys (additional registration).

(1) Register the key code (immobilizer code) in the transponder key ECU.

Target ECU	See Step
Transponder key ECU	3

(b) When replacing the transponder key ECU (new registration).

(1) Register the key code (immobilizer code) in the transponder key ECU.

Target ECU	See Step
Transponder key ECU	2

(2) Register the ECU COMMUNICATION ID between the ECM and the transponder key ECU.

Target ECU	See Step
ECM	5

(c) When replacing the ECM.

(1) Register the ECU COMMUNICATION ID between the ECM and the transponder key ECU.

Target ECU	See Step
Transponder key ECU	5

(d) Erasure of key code.

(1) Erase the key code.

Target ECU	See Step
Transponder key ECU	4

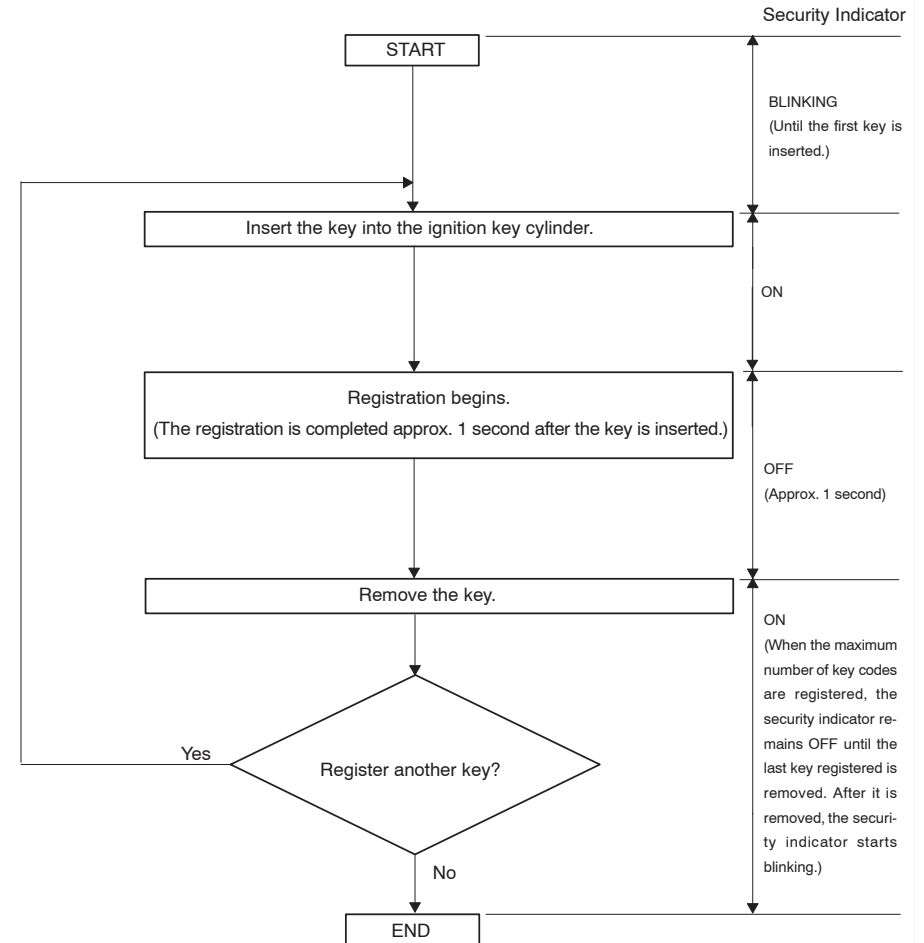
2. KEY REGISTRATION IN AUTOMATIC REGISTRATION (NEW REGISTRATION)

(a) When an ignition key is inserted into the ignition key cylinder, the key code (immobilizer code) registration is automatic. In this mode, a maximum of 4 key codes for 3 master keys and 1 sub-key can be registered. Any order of registration for the master keys and sub-key is fine because the transponder key ECU can distinguish between different types of keys.

HINT:

- When a new transponder key ECU is installed, key codes (immobilizer codes) must be registered in the transponder key ECU.
- New transponder key ECUs are automatically set to automatic key code registration mode.

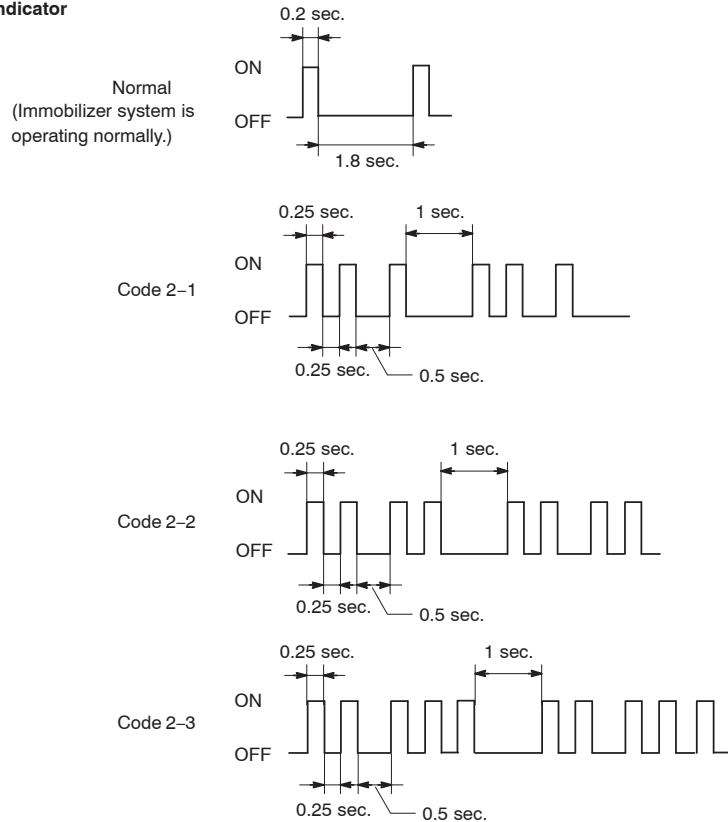
Automatic Key Code Registration (New Registration):



HINT:

- When no key is inserted into the ignition key cylinder in automatic key code registration mode, the security indicator remains on.
- When the immobilizer system is operating normally and the key is pulled out, the security indicator blinks continuously.
- If the key code registration has failed in automatic key code registration mode, code 2-1 will be output from the security indicator. Trying to re-register an already registered key will cause code 2-2 to be output when the key is inserted. If the number of registered key codes exceeds the limit, code 2-3 will be output from the security indicator. The output details are shown below.

Security Indicator



- (b) Finish the automatic key code registration mode.

HINT:

The automatic key code registration mode can be forced to end when at least 1 key code (immobilizer code) for the master key has been registered.

3. REGISTRATION OF ADDITIONAL KEY (ADDITIONAL REGISTRATION)

- (a) Register an additional key using the hand-held tester.

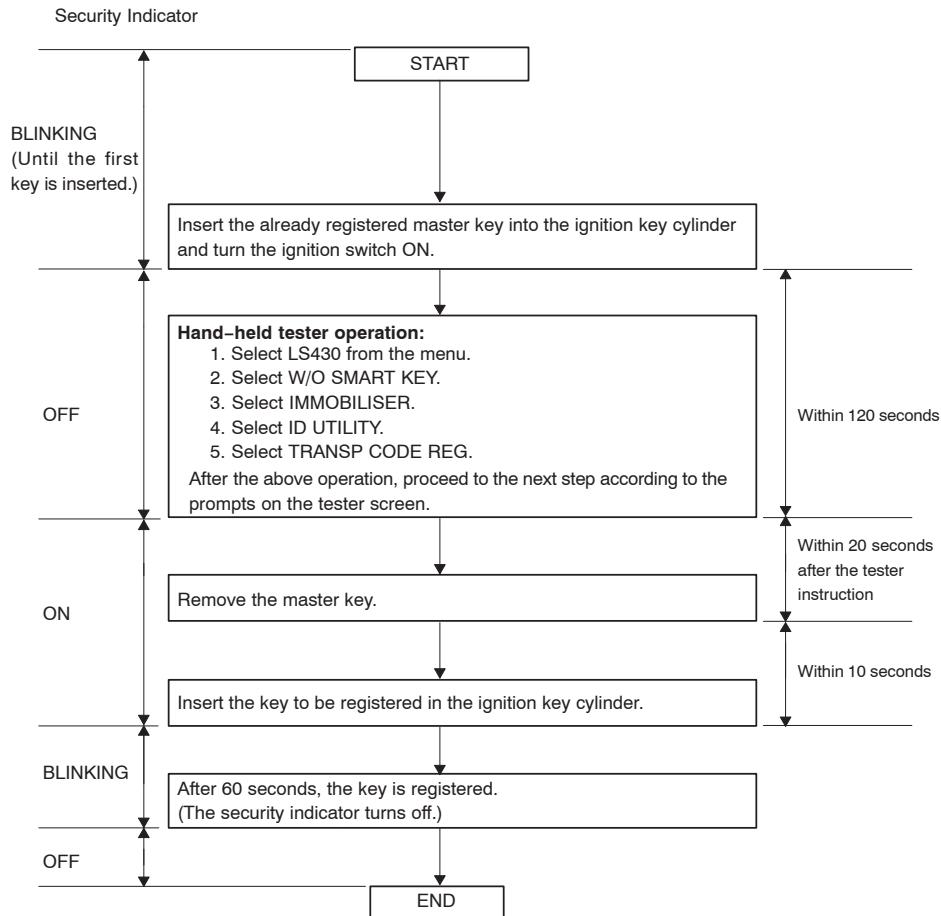
HINT:

- A maximum of 5 master key codes and 3 sub-key codes can be registered.
- Registration mode will end if each step is not completed within the specified time.
- When the ignition cylinder or the key cylinder set is replaced, remove the transmitter module from the original master key. Then install this transmitter module to a new key and use the new key as the master key. If necessary, use this master key to register other keys.

NOTICE:

When the ignition key cylinder has been replaced, locking and unlocking doors is possible with the new master key's transmitter module (taken from the original master key). However, the new master key will not be able to lock and unlock doors through the door key cylinder. Keep the original master key. If the new master key's transmitter module's battery fails, the original master key can be used to lock and unlock doors through the door key cylinder.

Additional Registration



HINT:

- A brief outline of procedures for key code registration is shown on this page. For more detailed information, please refer to the hand-held tester screen's instructions.
- When the immobilizer system is operating normally and the key is pulled out, the security indicator blinks continuously.
- If the key code registration has failed in automatic key code registration mode, code 2-1 will be output from the security indicator. Trying to re-register an already registered key will cause code 2-2 to be output when the key is inserted. If the number of registered key codes exceeds the limit, code 2-3 will be output from the security indicator. The output details are shown in step 2 (new registration).

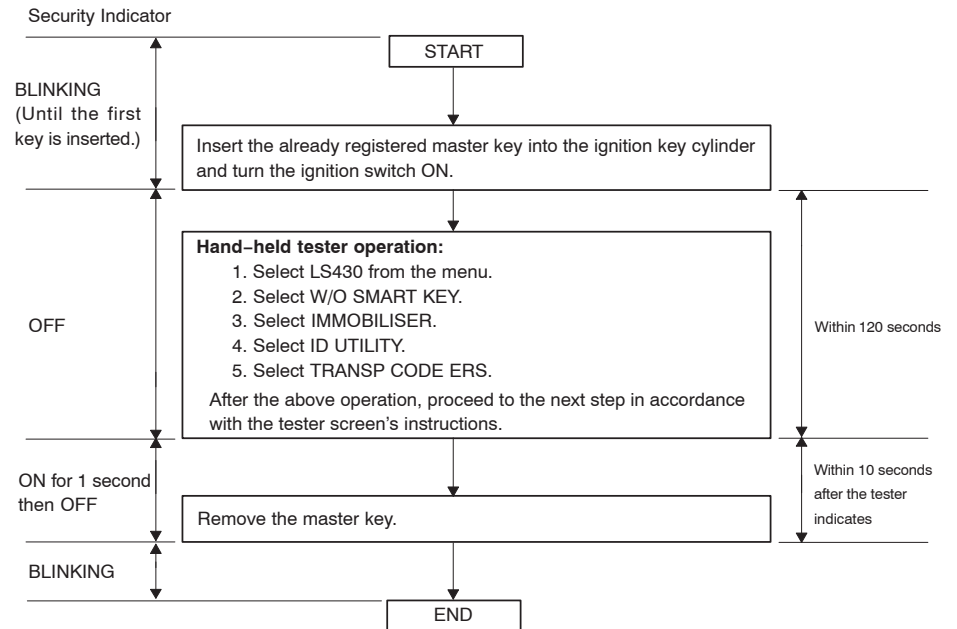
4. ERASURE OF KEY CODE

(a) Erase key codes using the hand-held tester.

HINT:

- All key codes are erased except for the master key, which is used for erasing the key codes. In order to use a key whose code has been erased, a new key code must be registered.
- Registration will be cancelled if each step is not completed within the specified time.

Erasing Key Code



HINT:

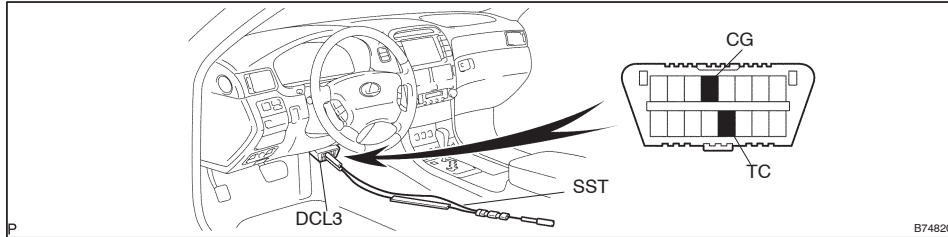
- A brief outline of procedures for key code erasure is shown on this page. For more detailed information, please refer to the hand-held tester screen's instructions.
- When the immobilizer system is operating normally and the key is pulled out, the security indicator blinks continuously.

5. ECU COMMUNICATION ID REGISTRATION

NOTICE:

- The ECU COMMUNICATION ID should be registered when the transponder key ECU and/or the ECM is replaced, in order to match these ECM COMMUNICATION ID.
- The engine cannot be started unless the ECM COMMUNICATION ID matches.

(a) Register the ECU Communication ID



- (1) Using SST, connect terminals TC and CG of the DLC3.
STT 09843-18040
- (2) Turn the ignition switch ON (do not start the engine) and leave it as is for 30 minutes.
- (3) Turn the ignition switch OFF and disconnect terminals TC and CG.
- (4) Check that the engine starts.