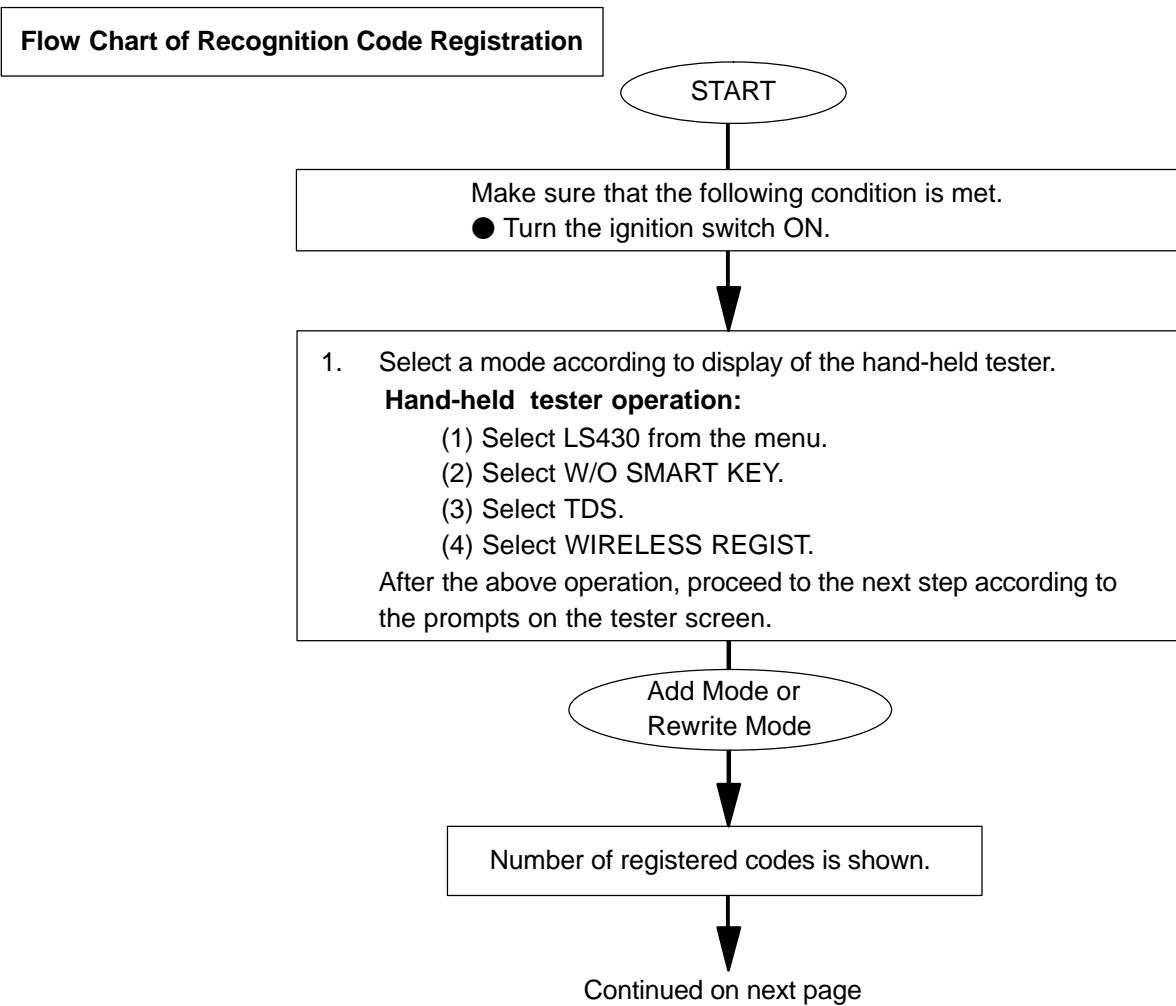


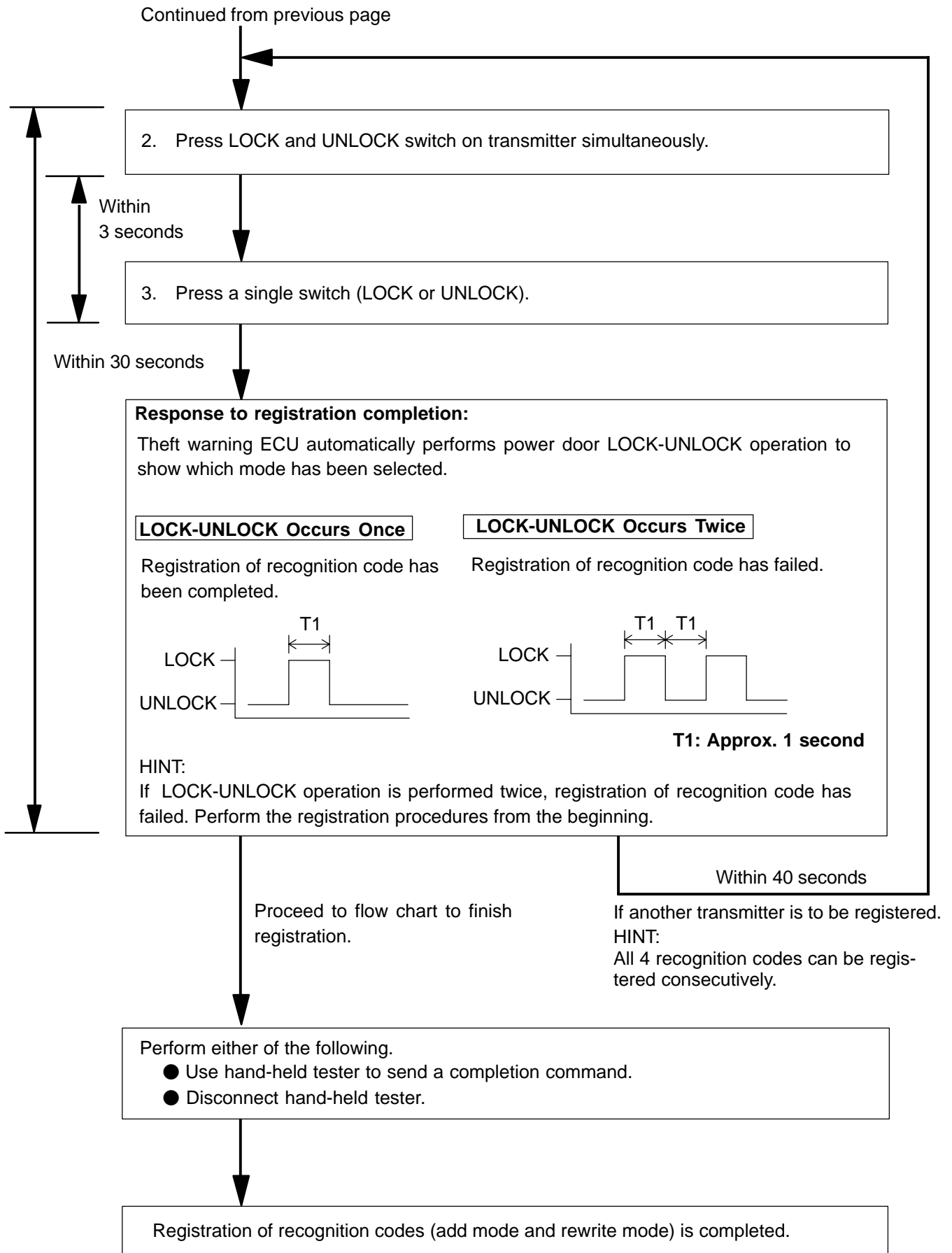
REGISTRATION

HINT:

- Recognition code registration is necessary when replacing the door control transmitter or the door control receiver. The key has 2 codes: the key code (immobilizer code) and wireless code. All of these code types need to be registered. Refer to page 05-2990 for the key code (immobilizer code) registration procedures.
- Add mode is used to register new recognition codes while still retaining codes already registered. This mode is used when a new transmitter is added. If the number of registered codes exceeds 4, the previously registered codes will be erased, starting from the first registered code.
- Rewrite mode is used to erase all the previously registered recognition codes in order to register all-new recognition codes. This mode is used when the transmitter or the door control receiver is replaced.
- Confirmation mode is used to confirm how many recognition codes have already been registered before another recognition code is registered.
- Prohibition mode is used to erase all the registered codes and disable the wireless door lock function. This mode is used when the transmitter is lost.
- All of the following registration procedures must be performed in order.

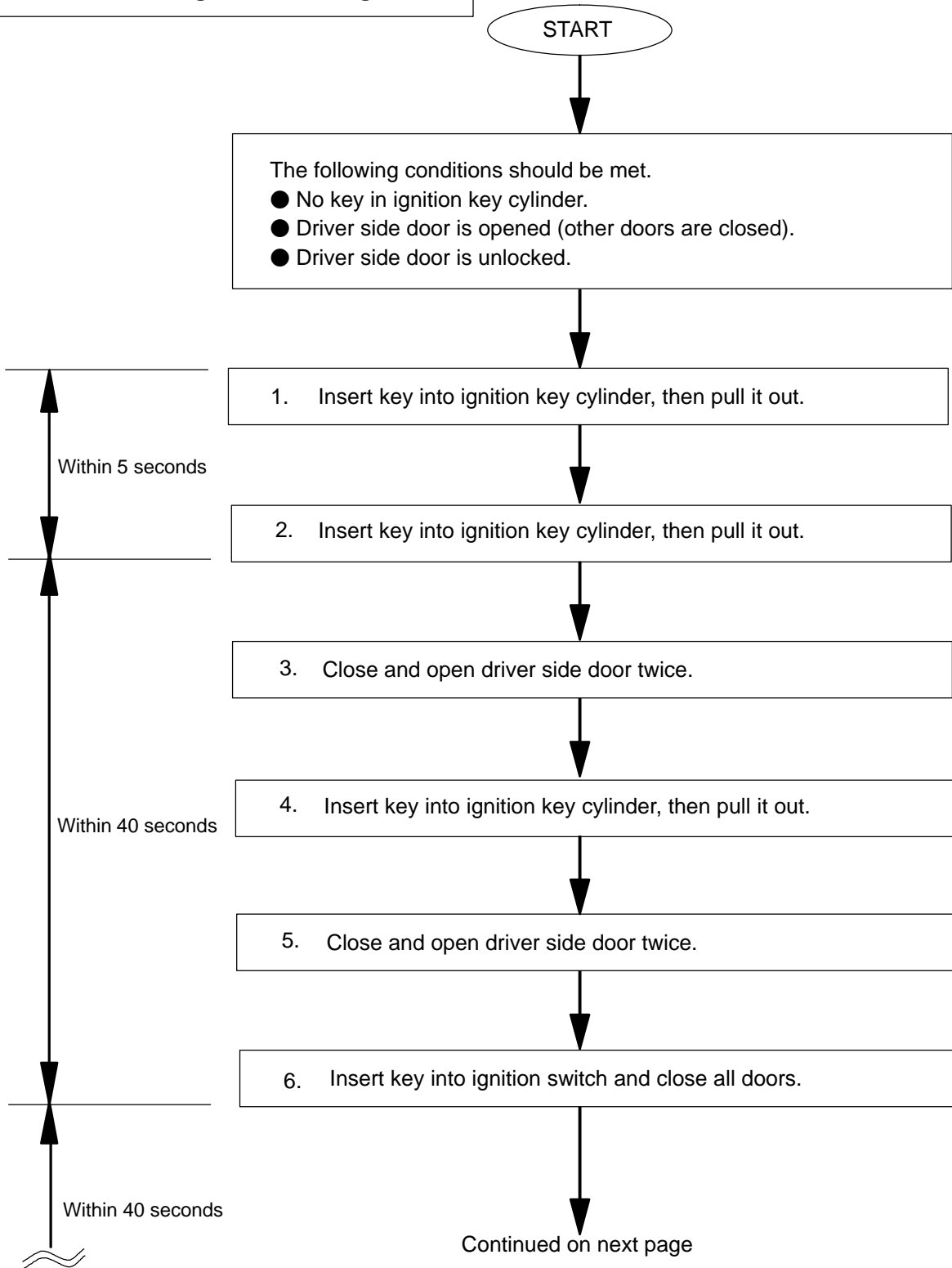
1. REGISTER RECOGNITION CODE When using the hand-held tester





2. REGISTER RECOGNITION CODE
When not using the hand-held tester

Flow Chart of Recognition Code Registration



Continued from previous page

Mode Selection:

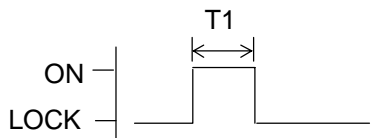
- 7. Turn ignition switch from LOCK to ON and back to LOCK at approximately 1 second intervals according to the number of times shown below.

Number of ON-LOCK operations of ignition switch:

Add Mode

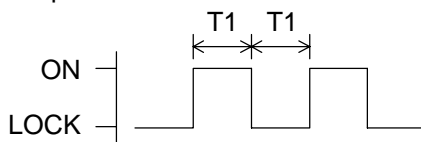
ON-LOCK operation: Once

T1: Approx. 1 second



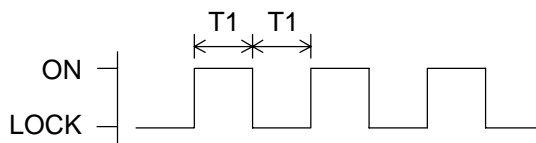
Rewrite Mode

ON-LOCK operation: Twice



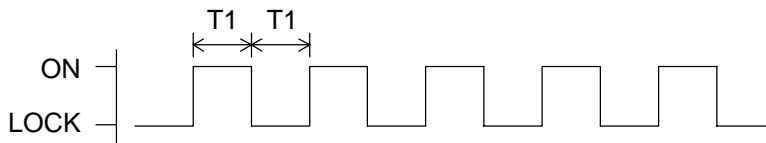
Confirmation Mode

ON-LOCK operation: 3 times



Prohibition Mode

ON-LOCK operation: 5 times



If the number of ignition switch ON-LOCK operations 0, 4, 6 or more, there will be no response (power door lock and unlock operation) to show which mode has been selected.

Within 40 seconds

- 8. Remove key from ignition key cylinder.

Within 3 seconds

Continued on next page

Within 3 seconds

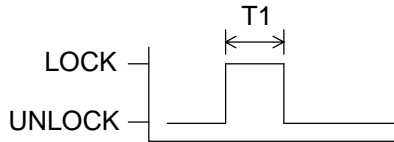
Continued from previous page

Response to selected mode (Power door lock operation):

Theft warning ECU automatically performs power door LOCK-UNLOCK operation to inform which mode has been selected.

Add Mode

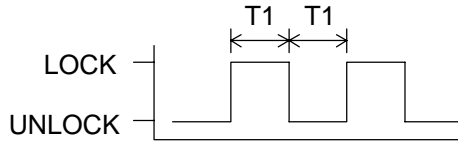
LOCK-UNLOCK operation: Once



T1: Approx. 1 second
T2: Approx. 2 seconds

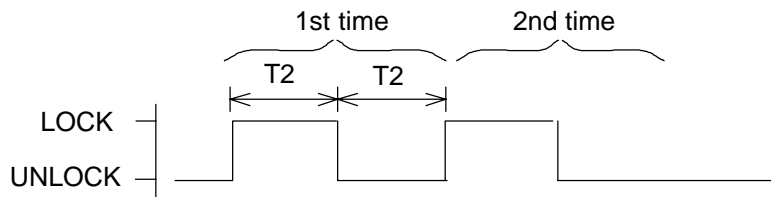
Rewrite Mode

LOCK-UNLOCK operation: Twice



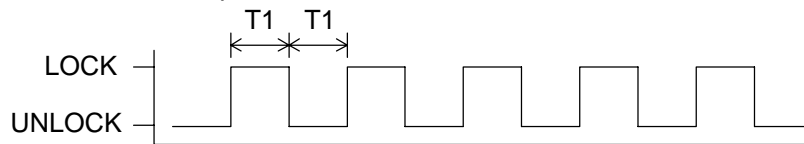
Confirmation Mode

LOCK-UNLOCK operation: The number of registered codes (1 to 5 times)



Prohibition Mode

LOCK-UNLOCK operation: 5 times



HINT:

- In confirmation mode, when LOCK/UNLOCK operation is performed twice, the number of registered recognition codes is 2.
- In confirmation mode, when 0 codes are registered, LOCK/UNLOCK operation is automatically performed 5 times.

Within 40 seconds

