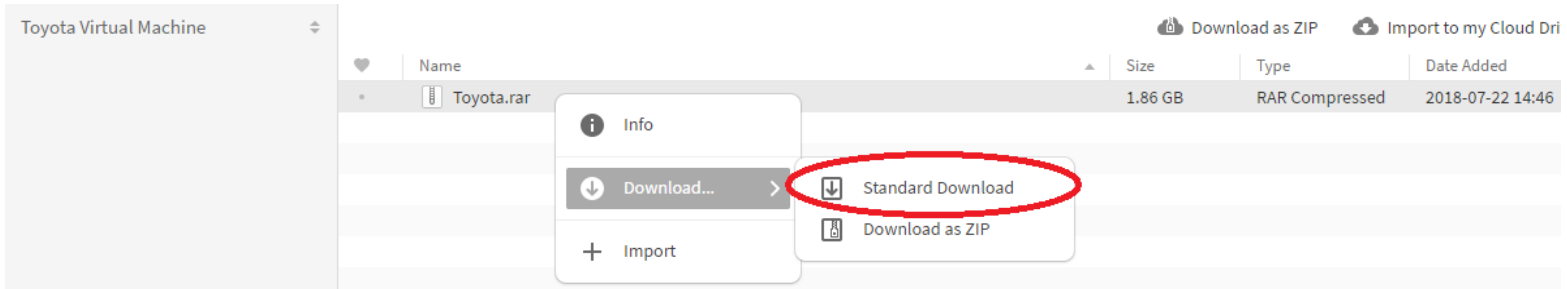


**** DO NOT PLUG-IN CABLE UNTIL FINAL STEP ****

Download the required software on your computer

1. Coding Virtual Machine Archive

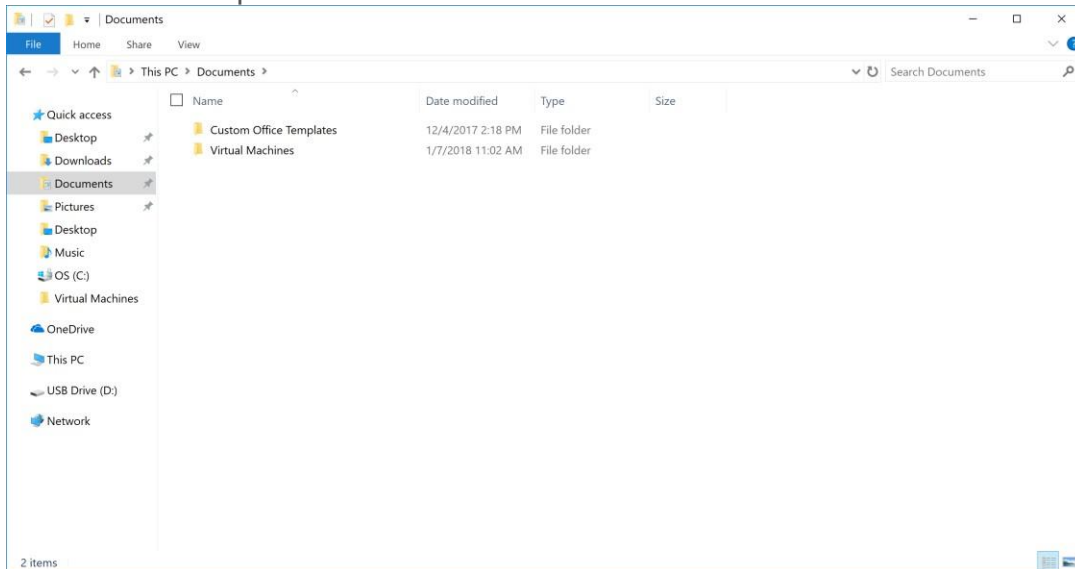
- a. www.bmwesys.com/techstream (Must use Google Chrome Browser due to HTML5 data transfer limits)
- b. Right-Click on the Toyota.rar file and choose Download... → Standard Download

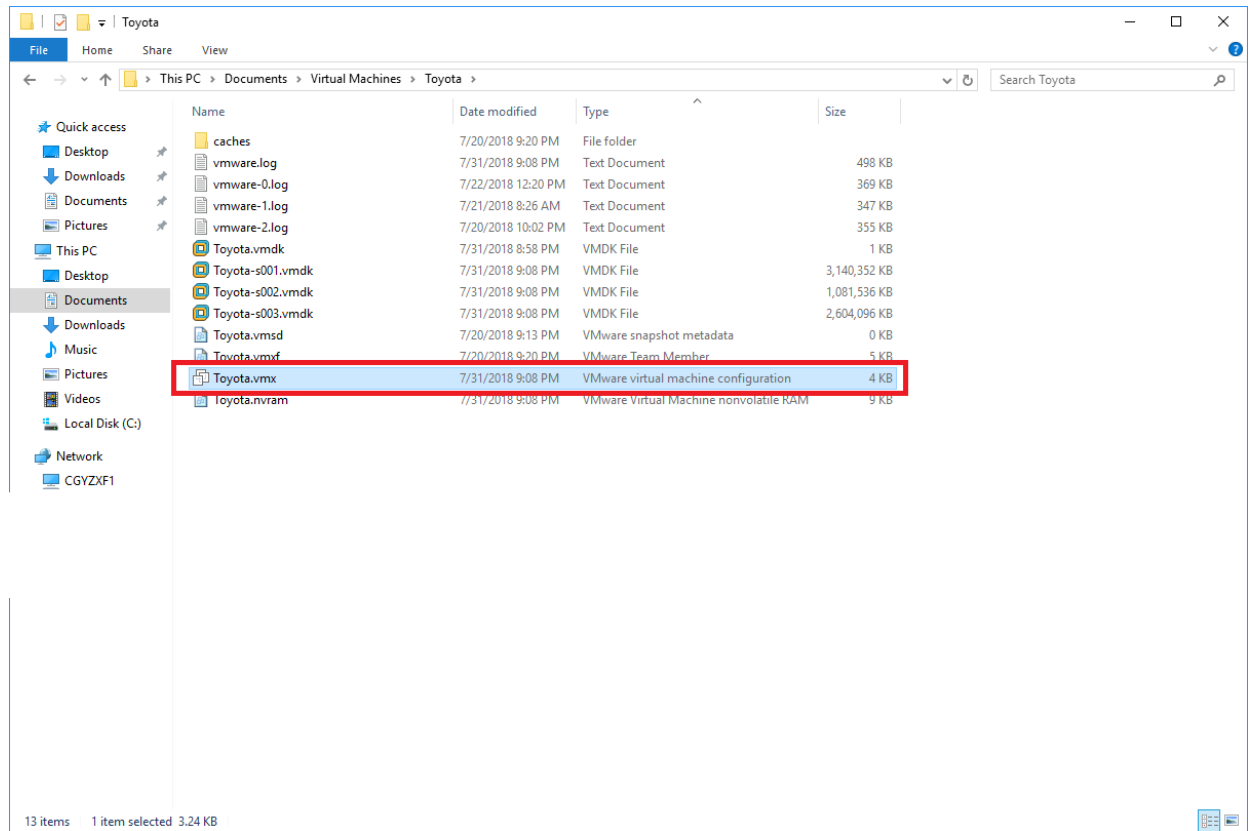
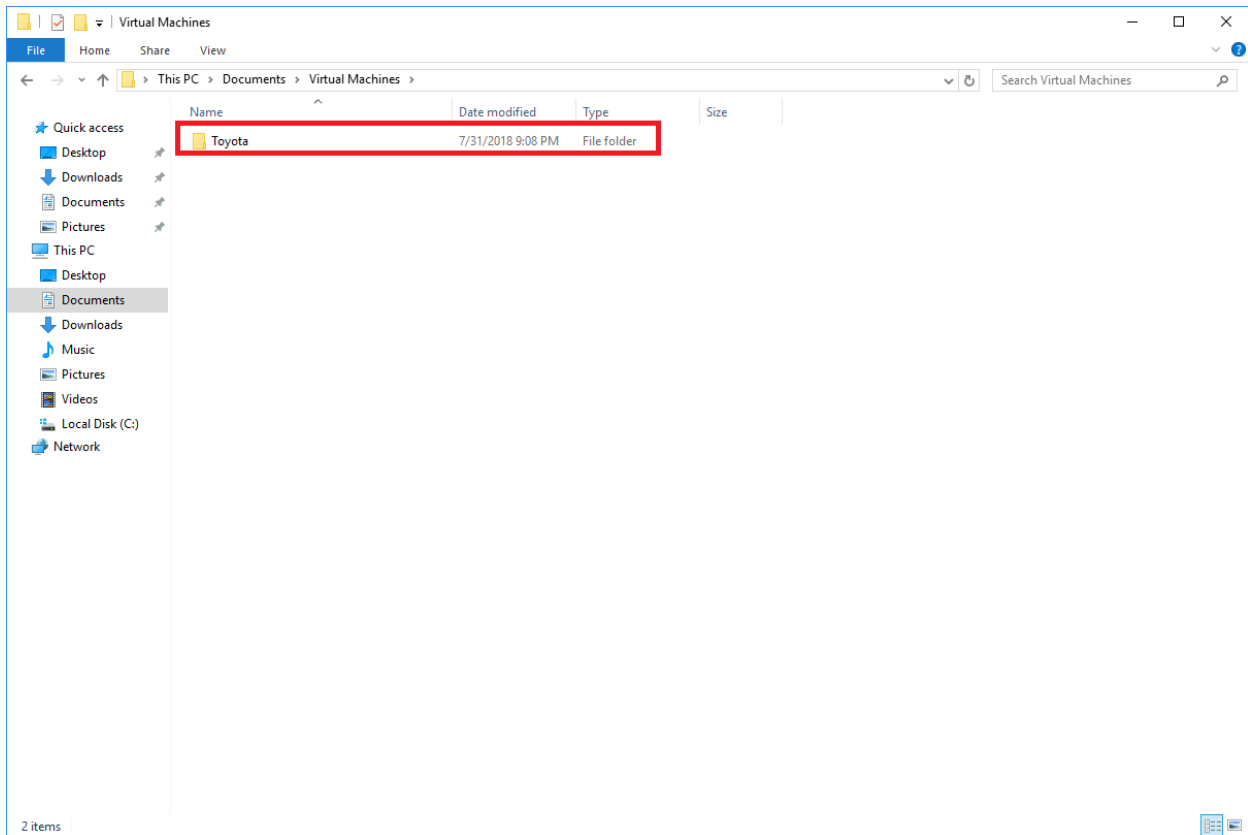


2. WinRAR Archive Extractor (MUST USE THIS APPLICATION)

- a. www.rarlab.com/download.htm
- b. Choose one of the first 2 options (32 or 64 bit depending on which version of windows you have. If you are unsure, choose the 32 bit version)
- c. Utilize WinRAR to extract the files from Toyota.rar to your Documents folder in Windows (C:\Users\USER NAME\Documents)

3. The files should be placed as follows:



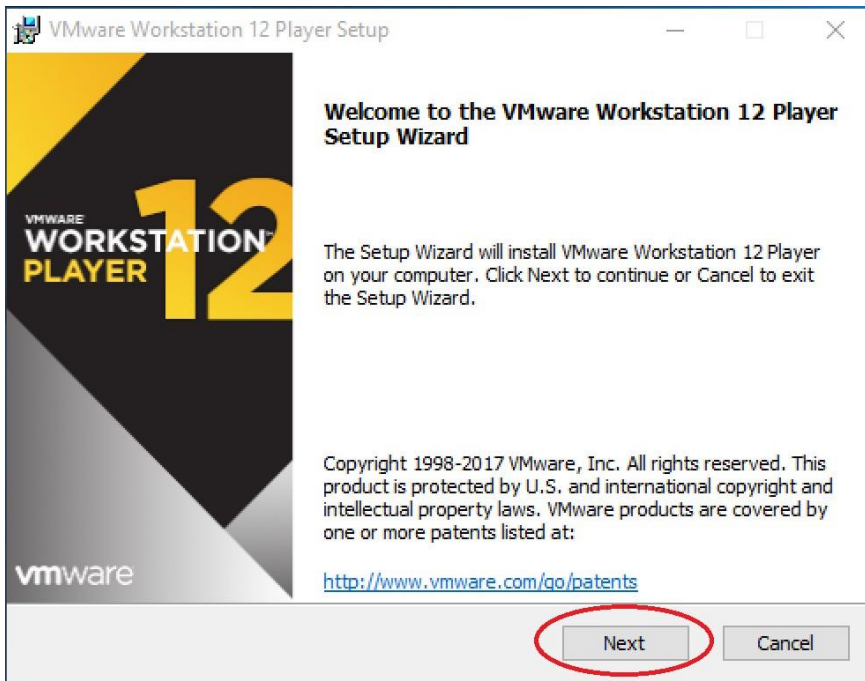


Prepare your computer for utilizing the Virtual Machine

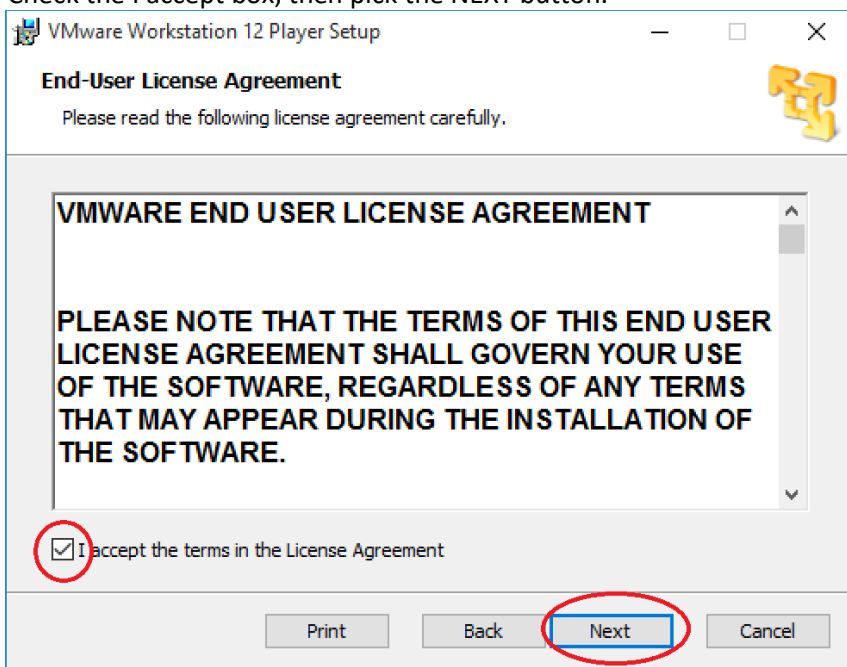
1. Download VMWare Player 12.5.8 for Windows

https://download3.vmware.com/software/player/file/VMware-player-12.5.8-7098237.exe?HashKey=26261b5cc2c3aac30b528d2a53931bba&ext=.exe¶ms=%7B%22sourcefilesize%22%3A%2274.22+MB%22%2C%22dlgcode%22%3A%22PLAYER-1258%22%2C%22languagecode%22%3A%22en%22%2C%22source%22%3A%22DOWNLOADS%22%2C%22downloadtype%22%3A%22manual%22%2C%22eula%22%3A%22N%22%2C%22downloaduuid%22%3A%22833bbb5f-7404-404e-92ad-b40828829eb3%22%2C%22purchased%22%3A%22N%22%2C%22dlgtype%22%3A%22Product+Binaries%22%2C%22productversion%22%3A%2212.5.8%22%2C%22productfamily%22%3A%22VMware+Workstation+Player%22%7D&AuthKey=1515339495_eb1095cd467801315f9a151ddb41b29a&ext=.exe

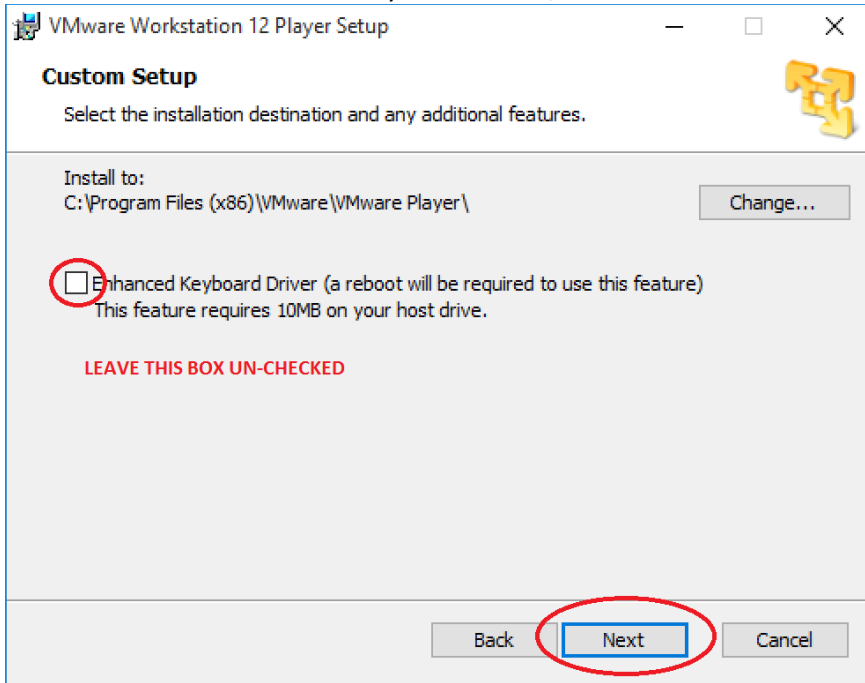
2. Install VMWare Player 12.5.8 for Windows for Non-Commercial Use
 - a. Run the EXE Installer that you downloaded in Step 1 above
 - b. Pick the NEXT button.



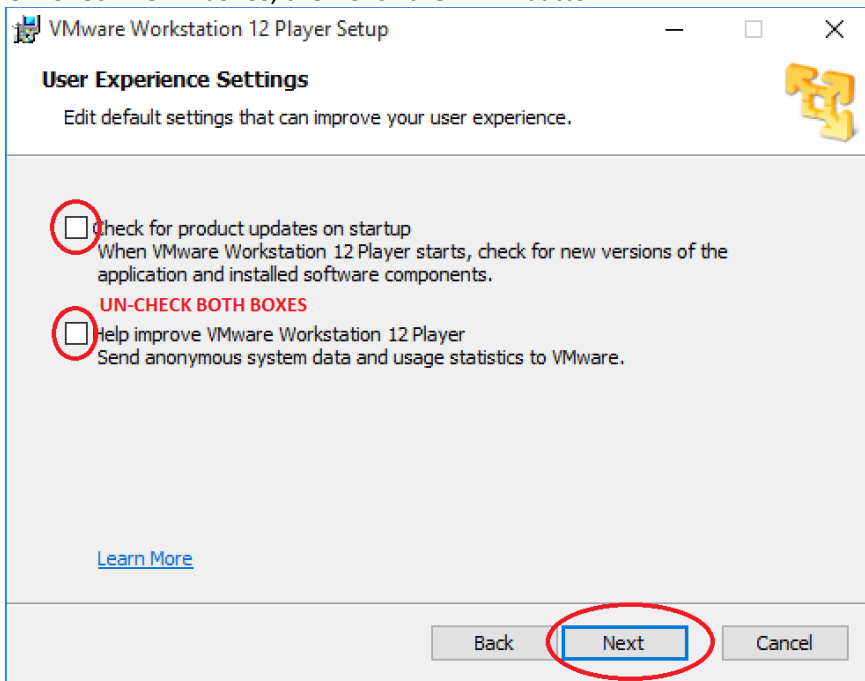
- c. Check the I accept box, then pick the NEXT button.



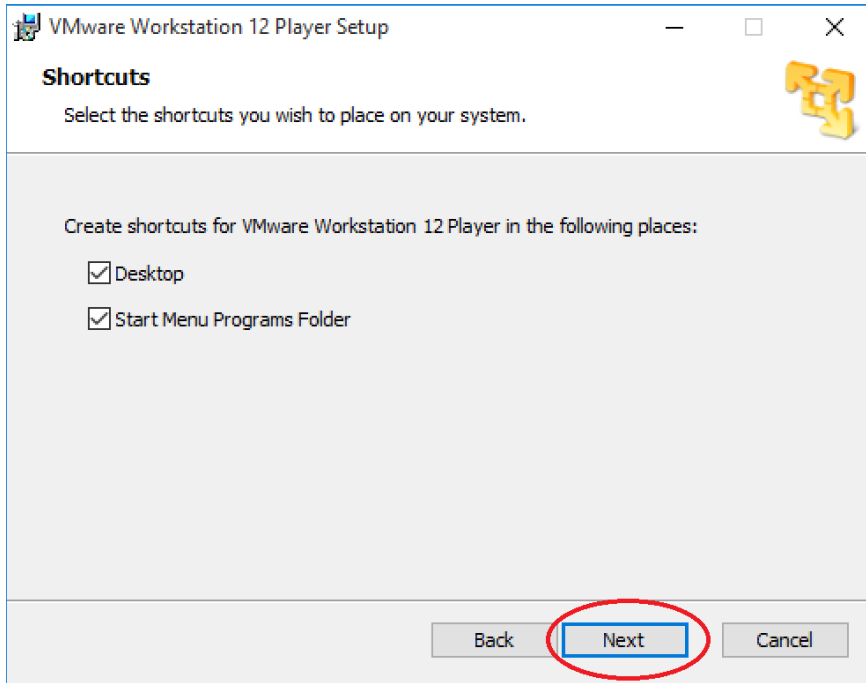
d. DO NOT Check the Enhanced Keyboard Driver, Click the NEXT Button.



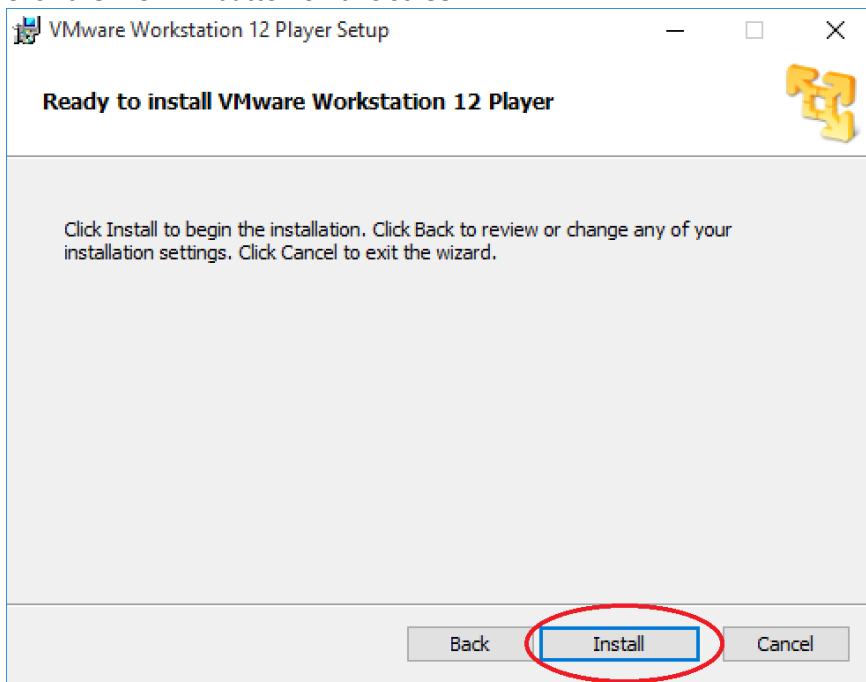
e. Un-Check BOTH boxes, then Click the NEXT button.



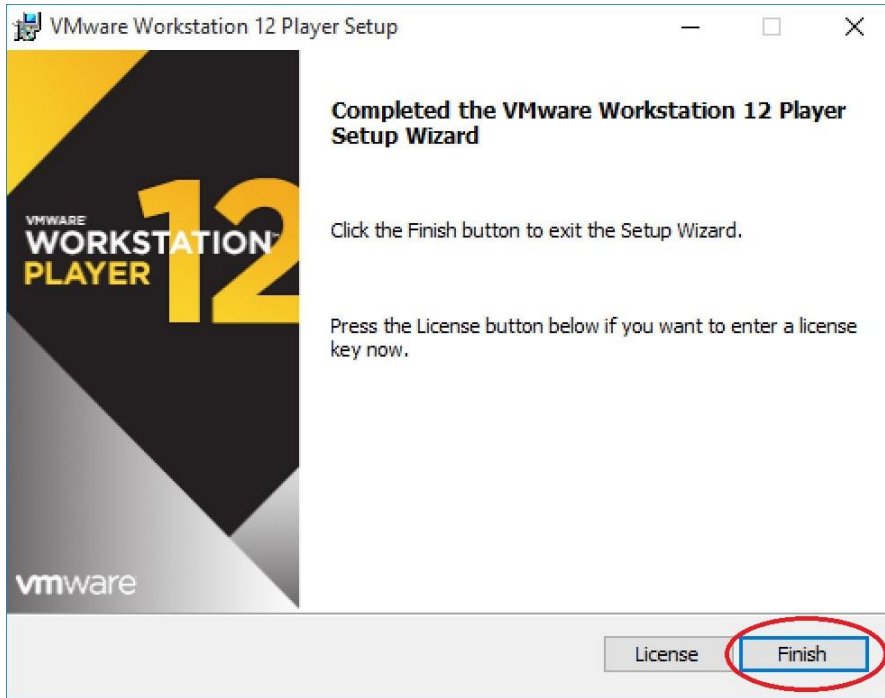
f. Click the NEXT button on this screen.



g. Click the INSTALL button on this screen.



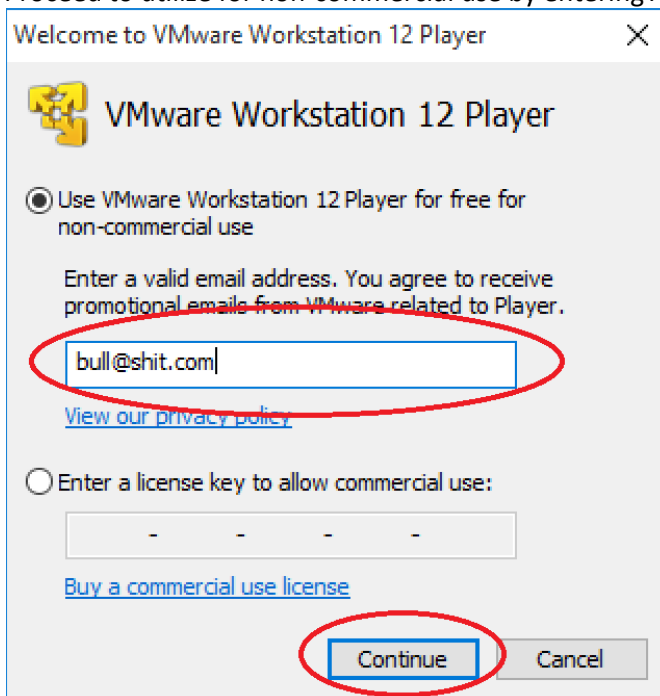
- h. Click the FINISH button on this screen.



- i. Open VMware Workstation Player 12.5.8 from the new icon on your Desktop.



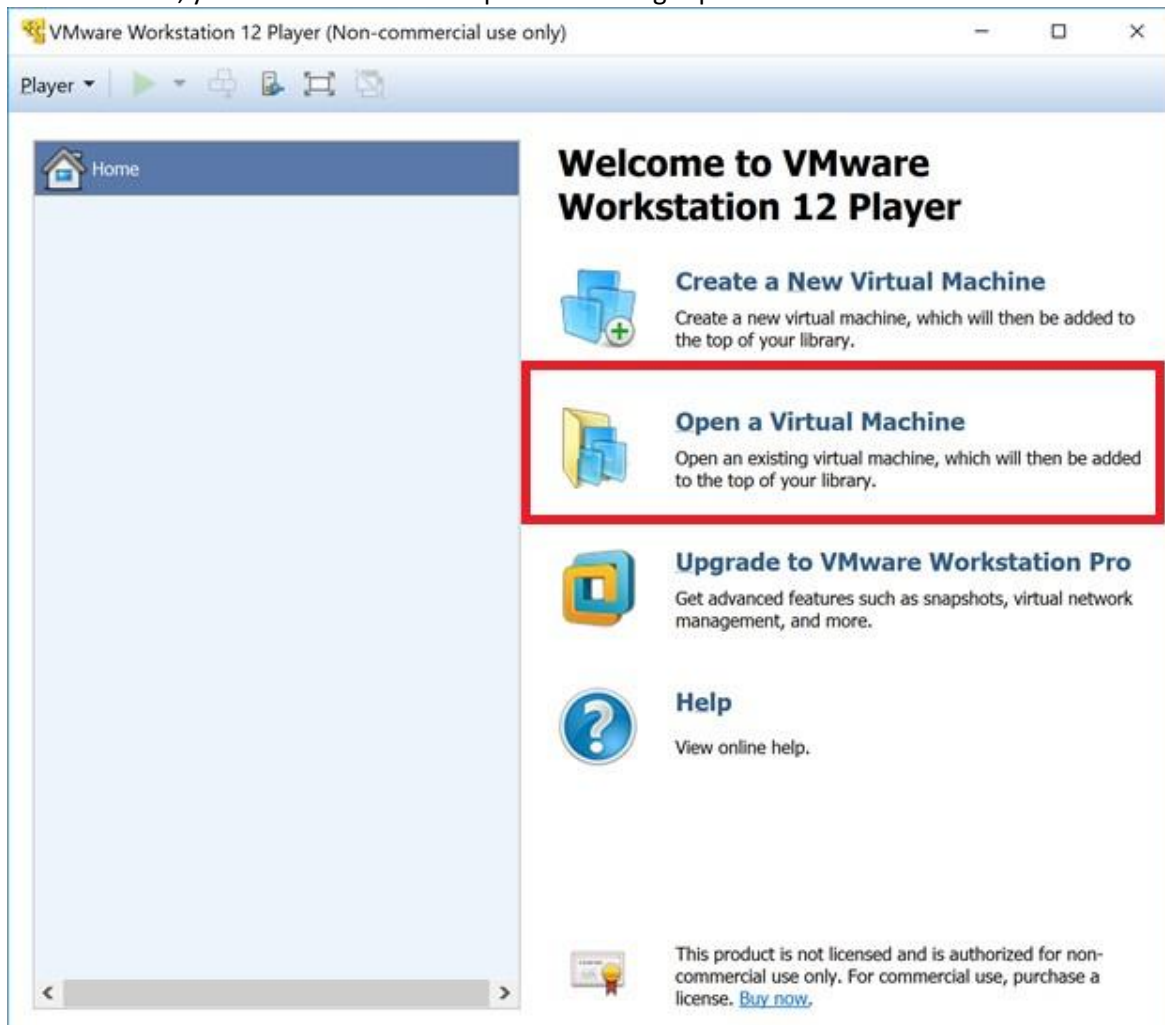
- j. Proceed to utilize for non-commercial use by entering ANY e-mail address and then click CONTINUE button.



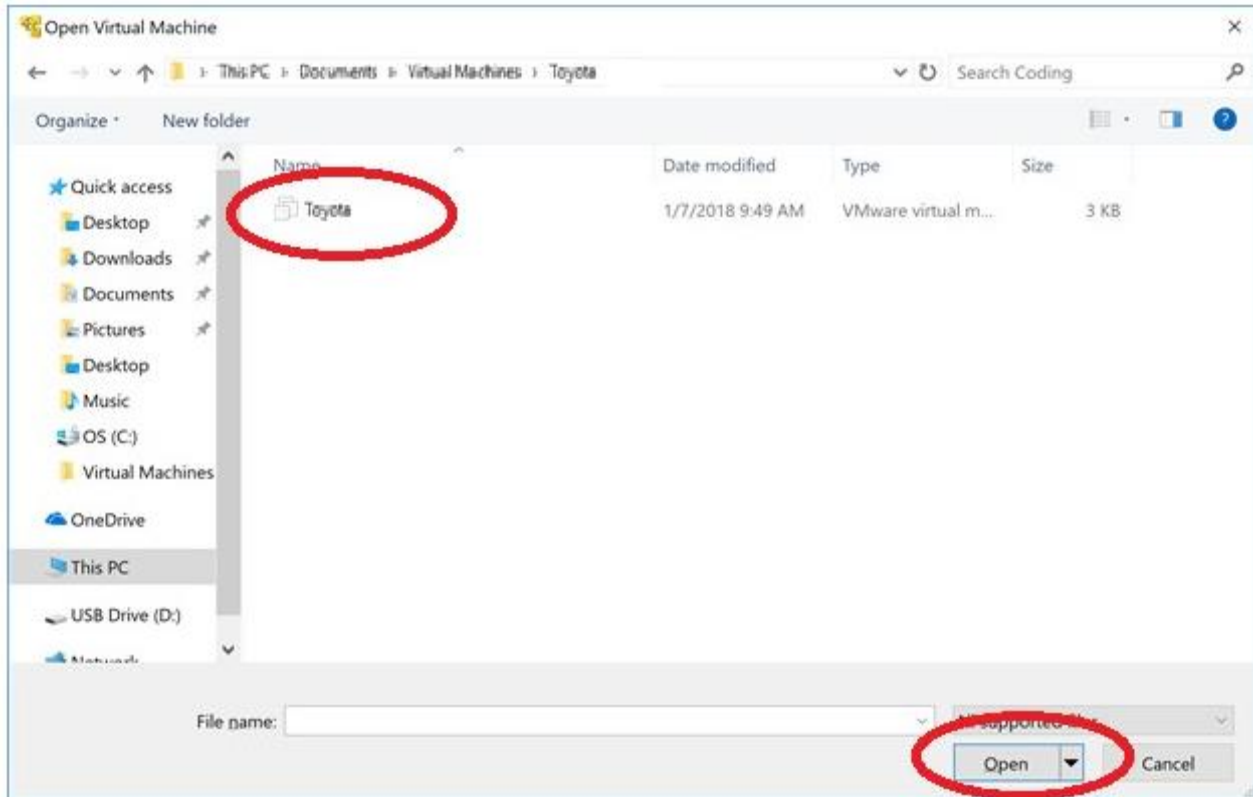
- k. Your VMware Workstation Player 12.5.8 Installation is now completed. Click the FINISH button.



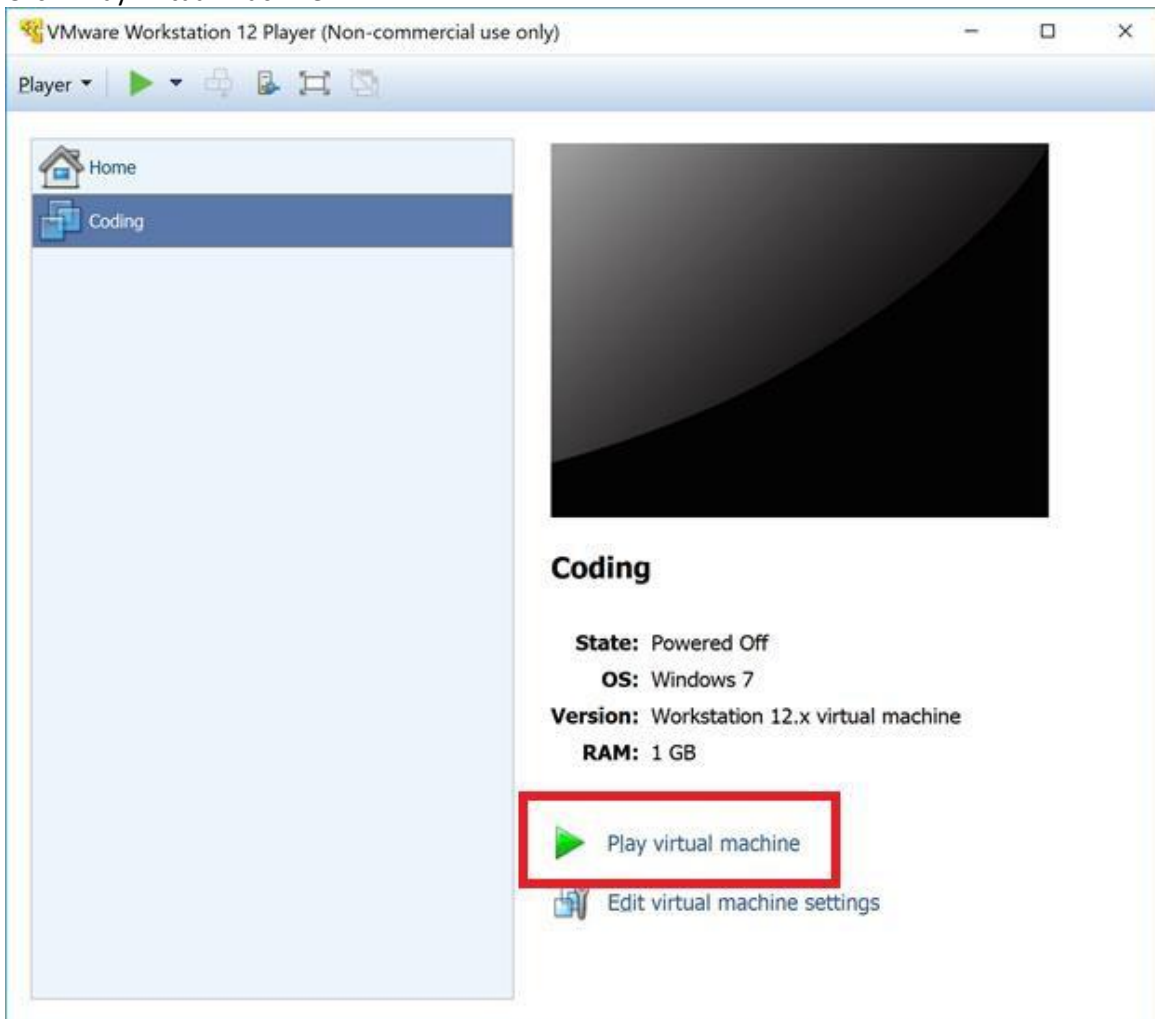
3. On this screen, you will click the OPEN option on the right panel.



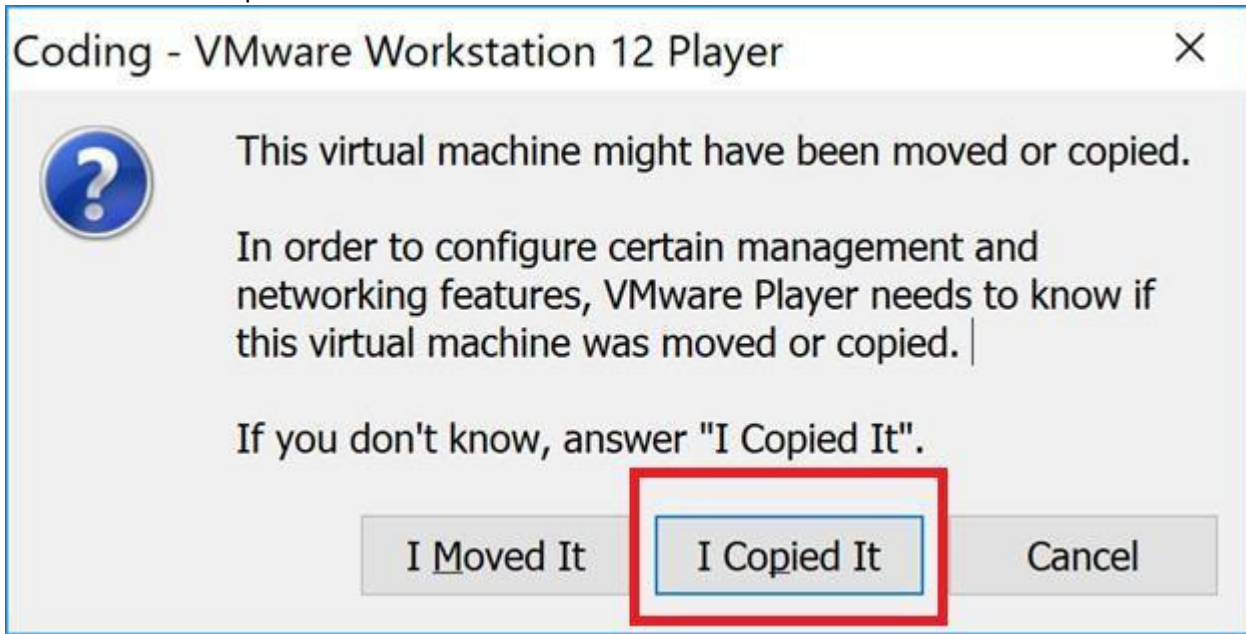
4. Navigate to: Documents\Virtual Machines\Toyota\
Select Toyota, then click Open



5. Click "Play Virtual Machine".

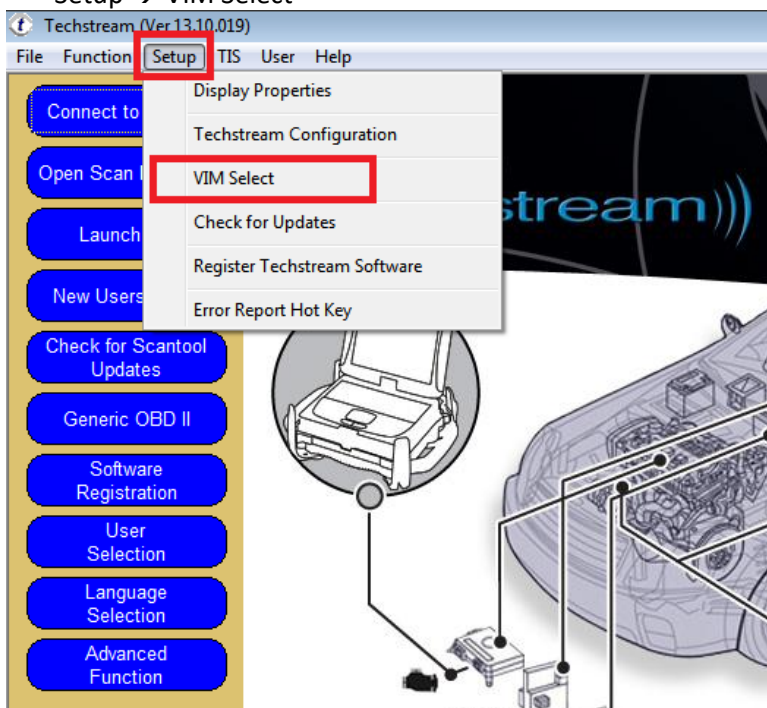


- Since this is the first time running the VM on your computer, you will need to tell VMware that "I Copied It", so the VM will be configured correctly on your computer, as the hardware is different from the machine that the VM was created with. Click the "I Copied It" button.

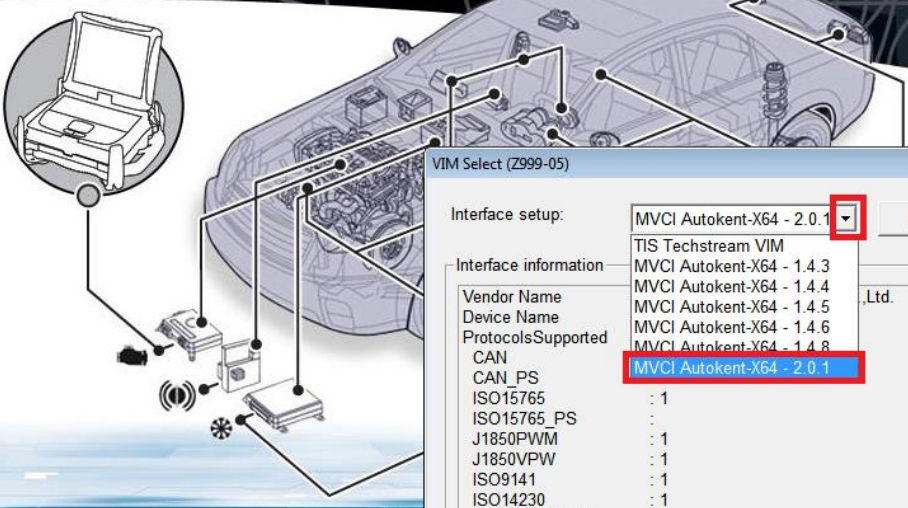


- Once the Virtual Machine boots up and then restarts after the initial launch, you will be brought directly into the Techstream v. 13.10.019 software.
- You may now insert the cable into the USB port on your computer. The red light should illuminate on the OBD-II Side of the cable interface. You may notice a brief driver install message pop-up next to the clock in the bottom-right-hand corner of the Virtual Machine window. Once this has been completed, feel free to begin using the software and cable by connecting to your vehicle's OBD-II port.

- It may be necessary to select the appropriate interface in Techstream by selecting:
Setup → VIM Select



- Connect to Vehicle
- Open Scan Data File
- Launch TIS
- New Users Demo
- Check for Scantool Updates
- Generic OBD II
- Software Registration
- User Selection
- Language Selection
- Advanced Function



VIM Select (Z999-05)

Interface setup: MVCI Autokent-X64 - 2.0.1

Interface information

Vendor Name	MVCI Autokent-X64 - 1.4.3
Device Name	MVCI Autokent-X64 - 1.4.4
ProtocolsSupported	MVCI Autokent-X64 - 1.4.5
CAN	MVCI Autokent-X64 - 1.4.6
CAN_PS	MVCI Autokent-X64 - 1.4.8
ISO15765	: 1
ISO15765_PS	:
J1850PWM	: 1
J1850VPW	: 1
ISO9141	: 1
ISO14230	: 1
SCI_A_ENGINE	: 0
SCI_A_TRANS	: 0
SCI_B_ENGINE	: 0
SCI_B_TRANS	: 0