


Exterior Rear View Mirror Vibration

Service Category Vehicle Exterior

Section Mirror (ext)

Market USA

Lexus Supports
ASE Certification 

Applicability

YEAR(S)	MODEL(S)	ADDITIONAL INFORMATION
2007 – 2009	LS460	
2008 – 2009	LS600H	

Introduction

Some 2007 – 2009 model year LS 460/460L and 2008 – 2009 LS 600h vehicles may exhibit a vibration from the exterior side view mirrors while driving. A bolt set is now available to improve this condition.

Production Change Information

MODEL	DRIVETRAIN	PRODUCTION CHANGE EFFECTIVE VIN
LS 460	2WD	JTHBL46F#95088313
	4WD	JTHCL46F#95002049
LS 460L	2WD	JTHGL46F#95035626
	4WD	JTHDL46F#95000635
LS 600hL	4WD	JTHDU46F#95010466

Parts Information

PREVIOUS PART NUMBER	CURRENT/NEW PART NUMBER	PART NAME	QTY
N/A	81859-50010	Bolt Set	2

Required Tools & Equipment

SPECIAL SERVICE TOOLS (SST)	PART NUMBER	QTY
Plastic Pry Tool Set*	00002-06000-01	1

* Essential SST.

NOTE

Additional SSTs may be ordered by calling 1-800-933-8335.

Exterior Rear View Mirror Vibration

Warranty Information

OP CODE	DESCRIPTION	TIME	OFF	T1	T2
BD1084	R & R Outer Rear View Mirror Assembly with Mirror Assembly Bolt Replacement (one side)	0.9	87910-505###-## 87940-505###-##	9B	14
Combo A	Opposite Side	0.7			

APPLICABLE WARRANTY

- This repair is covered under the Lexus Comprehensive Warranty. This warranty is in effect for 48 months or 50,000 miles, whichever occurs first, from the vehicle's in-service date.
- Warranty application is limited to occurrence of the specified condition described in this bulletin.

Repair Procedure

1. Remove the exterior rear view mirror. Refer to the Technical Information System (TIS), applicable model and model year Repair Manual.
 - [2007](#) / [2008](#) / [2009](#) LS 460/460L
Vehicle Exterior – Mirror (ext) – “Outer Rear View Mirror: Removal”
 - [2008](#) / [2009](#) LS 600h
Vehicle Exterior – Mirror (ext) – “Outer Rear View Mirror: Removal”
2. Disassemble the exterior rear view mirror assembly.

CAUTION

Please take steps to keep the mirror glass and base from becoming contaminated or damaged.

- A. Remove the plastic wire harness support.
Remove the tape holding the harness to the plastic wire harness support.
- B. Using a screwdriver, remove the 2 self-tapping screws holding the plastic wire harness support to the mirror base.

NOTE

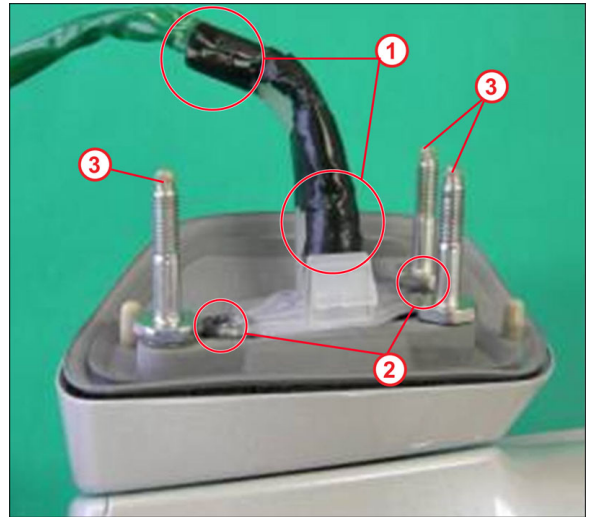
Mark each stud bolt and washers position for later assembly as each stud has been shimmed to optimize mirror fit.

Exterior Rear View Mirror Vibration

Repair Procedure (Continued)

C. Remove the 3 stud bolts.

Figure 1.

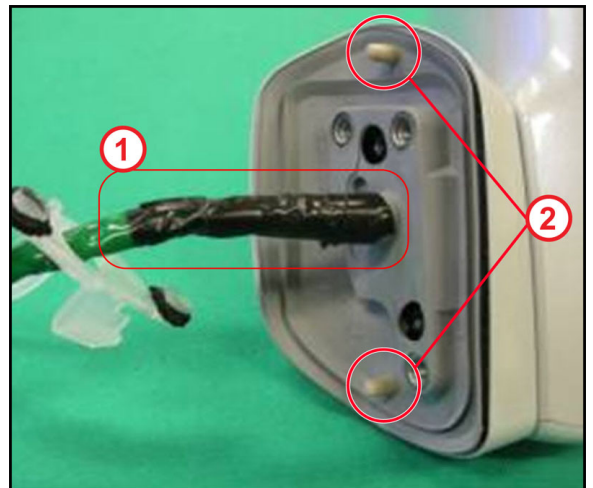


1	Plastic Wire Harness
2	Self-Tapping Screw
3	Stud Bolt

D. Remove the remaining tape around the harness.

E. Remove the end cap and gasket by pulling on the stud.

Figure 2.



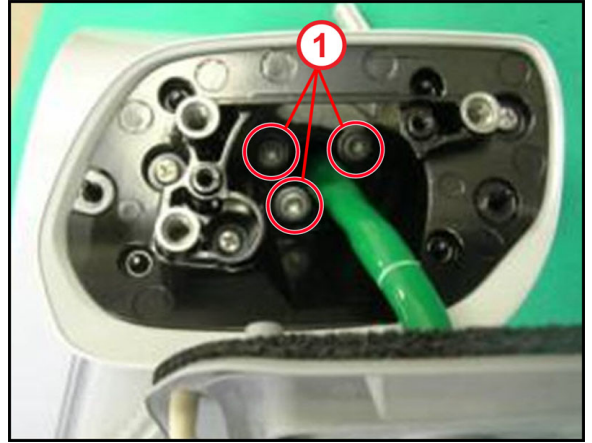
1	Tape
2	Stud

Exterior Rear View Mirror Vibration

Repair Procedure (Continued)

F. Remove the 3 Torx® bolts (T-25).

Figure 3.



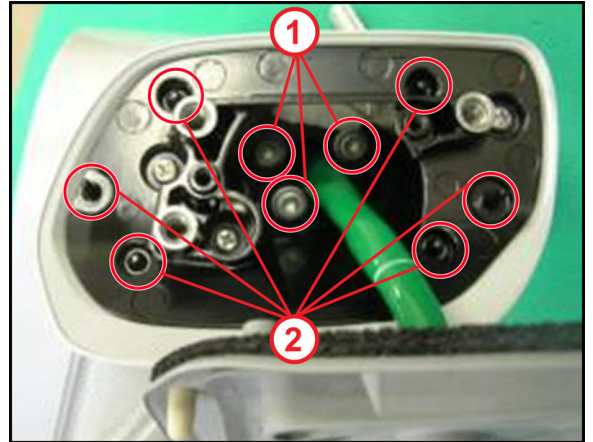
1	Torx® Bolt (T-25)
---	-------------------

Exterior Rear View Mirror Vibration

Repair Procedure (Continued)

3. Reassemble the exterior rear view mirror assembly.
 - A. Install the 3 Torx® bolts (T-25) from Bolt Set (P/N 81859-50010).
Torque: 4 N*m3 ft*lbf)
 - B. Attach the gasket and the cap to the mirror base.

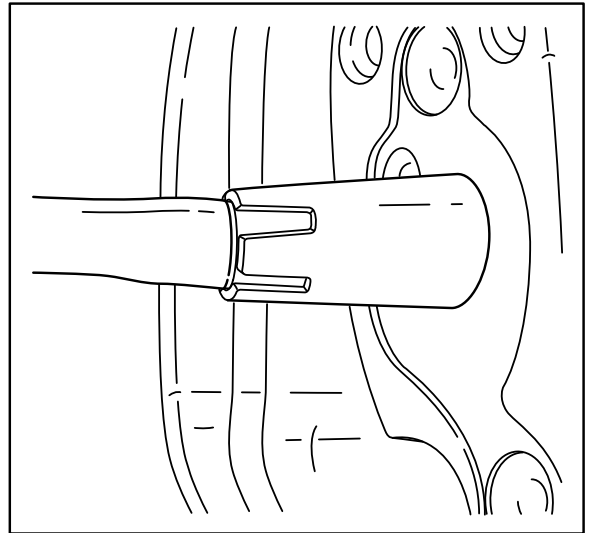
Figure 4.



1	Torx® Bolt (T-25)
2	Gasket Alignment Pins

- C. Wrap the harness with electrical tape.
 - (1) Make sure that the harness line is at the base of the cap.

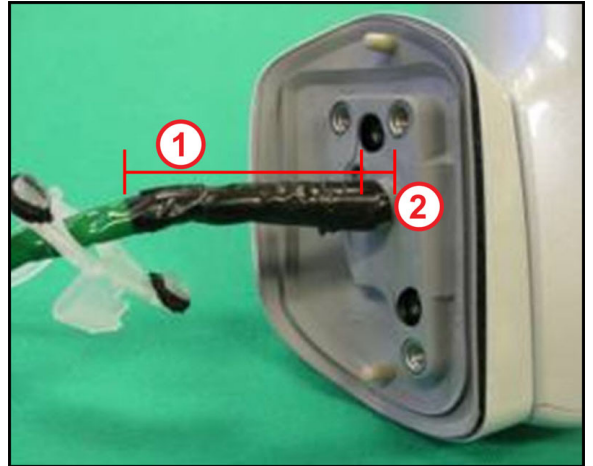
Figure 5.



Exterior Rear View Mirror Vibration

Repair Procedure (Continued)

- (2) Tape should be within 5 mm of the gasket base and should extend 70 mm. **Figure 6.**



1	70 mm
2	5 mm

- D. Insert the 3 stud bolts and washers in their original position.

Torque: 4 N*m (kgf*cm, 3 ft*lbf)

- E. Reinstall the plastic wire harness support.

- (1) Add tape in 2 positions.

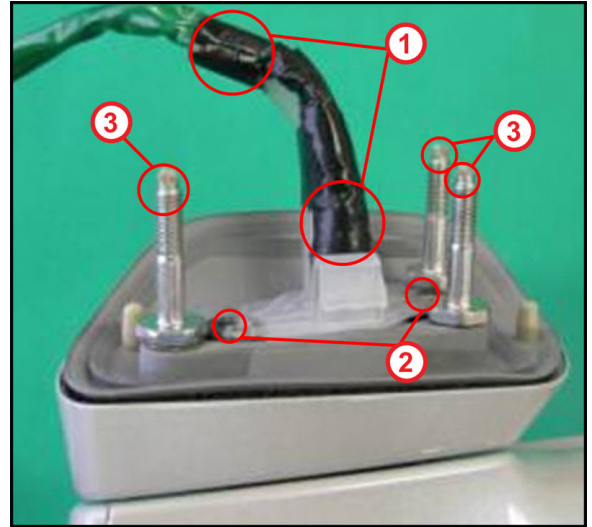
See Figure 7 for tape location.

Exterior Rear View Mirror Vibration

Repair Procedure (Continued)

- (2) Install the 2 self-tapping screws holding the plastic wire harness support to the mirror base.

Figure 7.



1	Tape
2	Self-tapping Screw
3	Stud Bolt

4. Install the exterior rear view mirror. Refer to TIS.
 - [2007](#) / [2008](#) / [2009](#) LS 460/460L
Vehicle Exterior – Mirror (ext) – “Outer Rear View Mirror: Installation”
 - [2008](#) / [2008](#) LS 600h
Vehicle Exterior – Mirror (ext) – “Outer Rear View Mirror: Installation”
5. Confirm exterior rear view mirror operation.
If mirror is inoperative, follow the applicable repair manual for diagnostics.