



LS

LEXUS | 2013

A definitive new look for THE DEFINITIVE LUXURY SEDAN.



INTRODUCING THE NEW LS LINE.

Generations of the LS have inspired an entire industry through visionary innovation, craftsmanship and design. And now our flagship has a new face. Invigorating new styling announces the presence of the 2013 LS like never before. New innovations make this the most technologically advanced Lexus ever. The all-new F SPORT model opens up a world of intense performance. And, for the first time, all LS models are available with all-wheel drive, expanding the world of possibilities—and expanding the pursuit it began decades ago.

LS 460 and LS 460 L | in Nebula Gray Pearl

The look of the Lexus flagship may have changed, but its uncompromising commitment to world-class luxury remains the same. The new bold exterior styling is highlighted by dramatic body lines—from the new front grille to the flowing look evoking forward momentum—as well as new wheel designs, including available 19-inch split-seven-spoke and 15-spoke alloy wheels.¹ A more rigid platform helps deliver enhanced agility and responsiveness, and the available Climate Concierge and Advanced Pre-Collision System² offer comfort and peace of mind on an unprecedented scale.

THE ALL-NEW LS 460 F SPORT | in Ultra White

Daring and unreserved, the all-new LS F SPORT is the next level of exhilaration. We dialed it up with paddle shifters, a sport-tuned suspension and Brembo[®] brakes³ for starters. Then we gave it its own unique exterior styling and created unique front sport seats to maximize the intensity. In a lineup with this much presence, the F SPORT speaks loudest of all.

LS 600h L | in Liquid Platinum

The LS Hybrid certainly defies convention, but not logic. The world's first prestige luxury hybrid has never rested on its laurels, instead choosing to push the bar higher. Its intelligent 438-hp⁴ Lexus Hybrid Drive delivers efficient power that is uncompromisingly thrilling, and the new bamboo-trimmed steering wheel and interior are as engaging as they are sustainably smart.



LS 460 F SPORT

When passion runs this deep, the only choice is to follow where it leads. The all-new LS F SPORT is engineered to drive your hunger for exhilarating performance even further. On rear-wheel drive models, its exclusive torque-sensing limited-slip rear differential automatically and instantly distributes power to the right and left wheels to help improve traction and stability during cornering, without interrupting power output. Downshift rev-matching allows for more precise shifting (RWD only). And aggressive styling cues are exclusive to F SPORT, including a signature grille, genuine aluminum interior trim and strong yet light 19-inch forged-alloy wheels.¹ The design is unrestrained. The feeling, undeniable.

DRIVE MODE SELECT

Optimize the vehicle systems in your LS to match your driving mood. Select from a number of modes, including ECO for enhanced fuel efficiency and Sport S for enhanced performance. On models with air suspension, COMFORT mode provides a smoother ride, and SPORT S+ pushes the engine, transmission, suspension and steering systems to deliver maximum acceleration and responsiveness.



19-IN WHEELS WITH BREMBO BRAKES

Inspired by the world-renowned Lexus LFA supercar, the F SPORT model offers track-tested features such as high-performance Brembo brakes.³ Its exclusive 19-inch forged alloy wheels¹ are elegant and aggressive with a two-tone finish and open design, showcasing your desire for a more complete mastery of the road.

LET YOUR IMPULSES DRIVE.





A BOLD STATEMENT
down to the smallest stitch.



F SPORT EXCLUSIVE STYLING

Exhilaration isn't solely delivered by what's under the hood. And on the LS F SPORT, every detail has to contribute. The exclusive F SPORT front seats are tightly bolstered to help keep you in place during hard cornering. Paddle shifters give you greater control over the transmission. And meticulously crafted touches—from the white and gray stitching to the aluminum interior trim and pedals—elevate the dynamic interior. The F SPORT logo is embossed in both front headrests in a way that speaks boldly and elegantly. So while the dynamic exterior modifications and head-turning performance are getting all the attention outside, the inside is speaking directly to you.



LS 460 / 460 L

Since its inception, the LS has never been shy about making waves. Now, starting with a more dynamic exterior highlighted by the new spindle grille, the LS promises something even greater—a promise fulfilled by all the innovation, exhilaration and thoughtful design you'd expect from an industry leader. The 4.6-liter, 386-hp⁴ V8 engine pairs with an eight-speed automatic transmission on a more agile platform to deliver an invigorating blend of acceleration, seamless shifting, control and fuel efficiency. And to help provide even more traction and command, all-wheel drive is available on every LS, even when you opt for 19-inch wheels.¹ It's not just a sight to behold, but an experience to savor.

AGILITY AND RIGIDITY

To help enhance handling and stability, and to make the ride even more comfortable, the platform of the LS was strengthened in a number of ways. Cabin and panel reinforcements, high-precision welding and other advanced production technologies were all used to increase rigidity and reduce vibration. The result? More control and confidence on the road.



A COMMANDING PRESENCE.
More seen, and more truly felt.





INNOVATIVE. INTELLIGENT. INVITING. IN EVERY DETAIL.

From intuitive technologies that connect you to your destination to purposeful details that connect you to your immediate environment, the new LS is filled with equal parts style and smarts. The instrument panel and center console have been redesigned to have more dimension, evoking a sense of space, sophistication and easy functionality. The focal point is the wide 12.3-inch split-screen high-resolution multimedia display, making it easier than ever to use technologies such as the standard Navigation System⁵ and the available Lexus Enform[®] App Suite,⁶ which helps you with a host of tasks, from making dinner reservations to buying movie tickets.



LEXUS ENFORM APP SUITE

The available Lexus Enform App Suite⁶ uses your compatible smartphone to give you in-vehicle access to your favorite mobile applications. You can connect to Bing,[™] iHeartRadio, MovieTickets.com, OpenTable,[®] Pandora,[®] Yelp[®] and Facebook Places. And, with wireless updates, new apps will be added as they become available. Learn more at lexus.com/LS/enform.

EXCLUSIVE WOOD TRIM

Unlike anything else in the world, the stunning design of the available *Shimamoku* espresso steering wheel and matching trim combines the organic feel of natural wood with a layered look that evokes modern art. The result of 67 steps of craftsmanship in 38 days, the wheel is formed from many layers of thinly cut wood, bonded together and meticulously shaped and buffed to align with the look of the wood on the instrument panel.



INDULGE YOUR SENSES. EXCEED YOUR EXPECTATIONS.

To create an environment of unparalleled comfort and refinement, the atmosphere inside the LS is designed to engage the senses like no other interior. As you approach your LS, the Advanced Illumination System begins an elegant sequence of soft, warm lights—from the puddle lamps outside down to the GPS-linked clock inside—to welcome you into the vehicle. At the push of the start button, the available Climate Concierge automatically monitors the temperature of four separate climate zones and adjusts not just the fans, but also the temperature of the seats and steering wheel individually so that each zone achieves its pre-set level of comfort as quickly as possible. The personalization extends to the broad selection of color and materials options: soft leather trim that is among the finest in the industry and exquisite wood accents that are hand-selected for consistency throughout the cabin. And with the Ultra Luxury Package you enjoy an Alcantara® headliner and power rear-door sunshades.

MARK LEVINSON® PREMIUM SURROUND SOUND AUDIO SYSTEM

Engineers and technicians spent over 2,000 hours tuning this available 19-speaker, 450-watt system so that the sound quality in the LS would rival the finest concert halls. And to audiophiles around the world, it will come as no surprise that the name on the system is Mark Levinson,⁷ whose dedication to quality extends even to the smallest screw in an amplifier.



EXECUTIVE-CLASS SEATING PACKAGE*

To help you make the most of the long wheelbase on the LS 460 L and LS 600h L, this available package replaces the rear bench with two individual seats. The right-rear seat has power-reclining capability and includes amenities such as a swiveling console table, built-in ottoman-style leg rest^{8,9} and an indulgent shiatsu massager. Learn more at lexus.com/LS/exec.



GENERATIONS OF HYBRID LEADERSHIP

With 438 total system horsepower⁴ and a 0-to-60 time of 5.6 seconds,^{4,10} it's no wonder the LS 600h L is a leader among luxury hybrids. After all, from launch it was the world's first prestige luxury and AWD V8 hybrid, and it hasn't slowed since. At Lexus, we have six generations of hybrid technology behind us, which means we are uniquely qualified and completely committed to creating the most advanced hybrid vehicles in the world. This is why the LS 600h L can pair a 5.0-liter V8 gasoline engine with cutting-edge hybrid technology to deliver smooth, seamless power you wouldn't expect from any hybrid.

BAMBOO-TRIMMED INTERIOR

Because it grows more than 10 times faster than conventional wood, bamboo was the smart and sustainable choice for a new interior option in the new LS Hybrid. The plants are handpicked for the perfect age and color, and only highly experienced artisans are qualified to perform the final shaping and polishing by hand. The result is a stimulating visual look contrasted with a comfortable, gentle feeling to the touch.



The
HYBRID THAT FEELS
nothing like one.



BRILLIANCE

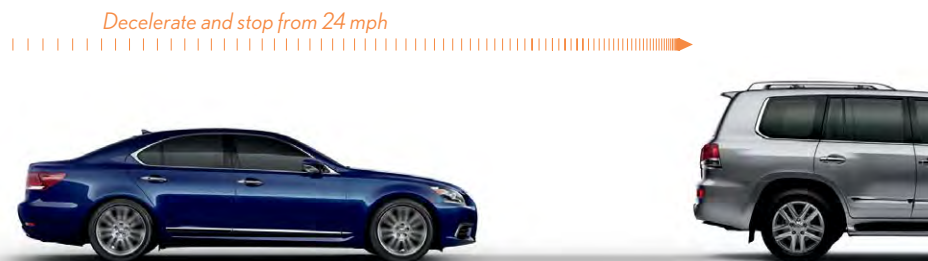
always looks ahead.

Visionary technology requires a total dedication to your peace of mind. This includes systems that are designed to be ready even when you may not be. The Vehicle Dynamics Integrated Management (VDIM) system¹¹ can predict and take steps to help prevent a skid even before it occurs by using a combination of individual-wheel braking, torque modulation and steering torque assistance. The available Driver Attention Monitor¹² is designed to detect if you are not looking forward and will signal an alert if it detects an object ahead. And available Lane Keep Assist¹³ is engineered to use a camera to monitor visible lane markings, warning you if you are drifting and then taking corrective measures to help steer you back into the lane. It's just the beginning of the forward-thinking—and forward-looking—technologies the LS has to offer.



ADVANCED PRE-COLLISION SYSTEM

The available Advanced Pre-Collision System (PCS)² is engineered to detect an imminent frontal collision and, while retracting the front seatbelts, automatically prepares Brake Assist¹⁴ to help provide increased braking pressure the moment you step on the brake pedal. The system is designed to detect pedestrians and other three-dimensional objects in the vehicle's path—even at night—and can apply the brakes to help reduce vehicle speed. And now the system can brake the vehicle to a complete stop at speeds up to 24 mph.



BLIND SPOT MONITOR WITH REAR CROSS-TRAFFIC ALERT

Even at low speeds such as in traffic jams, the available Blind Spot Monitor¹⁵ is designed to alert you if it detects vehicles in your blind spots. And when you're backing out of a parking spot, the new Rear Cross-Traffic Alert¹⁶ is designed to notify you of approaching vehicles that might be out of camera view.



ALL LED LAMPS

A stunning sight to behold, the new LS is the first Lexus to offer energy-efficient LEDs for all exterior lamps, including available headlamps, foglamps, rear combination lamps—even the puddle lamps under the side mirrors. They illuminate faster than conventional bulbs, making it easier for you to be seen when you apply the brakes.

OPTIONS AND PACKAGES

COMFORT PACKAGE (standard on LS LWB, LSh)

- Front-seat Climate Concierge with climate-comfort front seats
- Heated outboard rear seats (AWD only)
- Power rear sunshade
- Power trunk open/close

SEMI-ANILINE LEATHER AND ALCANTARA® UPGRADE PACKAGE (standard on LSh)

- Semi-aniline leather-trimmed interior
- Alcantara headliner (standard on LSF SPORT)
- Wood trim on rear ventilation outlets

ULTRA LUXURY PACKAGE (standard on LSh)

- Four-zone climate control, including rear overhead ducts
- Four-zone Climate Concierge with climate-comfort front and outboard rear seats
- Power rear sunshade (standard on LS LWB)
- Power rear-door sunshades
- Power-adjustable outboard rear seats with memory, two-way power lumbar support and lumbar massage
- Power-adjustable outboard rear butterfly headrests
- Wood-trimmed climate and audio controls in rear-center armrest
- Rear-seat Air Purifier
- Rear-seat cool box (excluding LSh)
- Power trunk open/close (standard on LS LWB)
- Rear seat-mounted side airbags (SRS)¹⁷

EXECUTIVE-CLASS SEATING PACKAGE (LS LWB, LSh)

Includes Semi-Aniline Leather and Alcantara Upgrade Package, plus:

Four-zone climate control, including rear overhead ducts, Air Purifier and infrared rear-passenger temperature sensor; four-zone Climate Concierge and climate-comfort rear seats (standard on LSh)

Power-adjustable rear seats with memory and two-way power lumbar support; power-adjustable outboard rear butterfly headrests (standard on LSh)

Right-rear power recliner with ottoman⁸⁹ and multifunction shiatsu massage

Wood- and leather-trimmed rear-center console with climate and audio controls, and retractable wood-trimmed table

Rear-seat cool box (excluding LSh)

Power rear and rear-door sunshades (standard on LSh)

110-volt AC power outlet

Rear-Seat Entertainment System (RSES) with Blu-ray/DVD player, nine-inch screen, auxiliary A/V inputs and wireless headphones¹⁸

Leather-trimmed instrument panel and glovebox door (standard on LSh)

Rear seat-mounted side airbags (SRS)¹⁷ (standard on LSh)

ADVANCED PRE-COLLISION SYSTEM PACKAGE (LS LWB, LSh)

Pre-Collision System² with all-speed Dynamic Radar Cruise Control

Active Pedestrian Detection System¹⁹ with infrared and stereo-camera technology

Driver Attention Monitor¹² with closed-eye detection

Lane Keep Assist¹³

Low-speed frontal collision avoidance assist

ALL-WEATHER PACKAGE (standard on LS AWD, LSh)

Windshield-wiper deicer and headlamp washers

Enhanced interior heater for faster heat output in cold weather

Higher-capacity vehicle battery

LS F SPORT

Includes all LS standard equipment, plus:

F SPORT exterior styling including front bumper, upper and lower grille inserts, rear diffuser

19-inch split-10-spoke forged alloy wheels by BBS with summer (RWD) or all-season (AWD) tires¹

Brembo opposed six-piston front brake calipers with 14.8-in ventilated discs³

TORSEN® torque-sensing limited-slip rear differential²⁰ (RWD only)

F SPORT-tuned, lowered Adaptive Variable Air Suspension, stabilizer bars and shock absorbers

Variable Gear Ratio Steering (VGRS)

ECO, Normal, Comfort, Sport S and Sport S+ Drive Modes

Black leather-trimmed interior with white perforations

F SPORT shift knob and bolstered front seats with embossed headrests

Paddle shifters

Downshift rev-matching (RWD only)

Black Alcantara headliner

Aluminum pedals and interior trim

Headlamp washers

OPTIONS

Blind Spot Monitor¹⁵ with Rear Cross-Traffic Alert¹⁶ (standard on LSh)

19-inch 15-spoke alloy wheels with summer (RWD) or all-season (AWD) tires¹ (excluding LSh)

19-inch split-seven-spoke alloy wheels with high-gloss finish and summer (RWD) or all-season (AWD) tires¹ (standard on LSh)

Adaptive Variable Air Suspension with Variable Gear Ratio Steering (VGRS), Comfort and Sport S+ Drive Modes (standard on LSh)

Pre-Collision System²¹ with all-speed Dynamic Radar Cruise Control

LED headlamps and intelligent high-beam headlamps²² (standard on LSh)

Mark Levinson 19-speaker 450-watt @ 01% THD, 20-20,000 Hz²³ Reference Surround Sound Audio System⁷ with 71-channel architecture and DVD/CD player (standard on LSh)

Heated wood- and leather-trimmed steering wheel (standard on LS AWD)

Wood- and leather-trimmed steering wheel, with leather center pad (LS RWD)

Heated wood- and leather-trimmed steering wheel, with leather center pad (standard on LSh)

F SPORT steering wheel (LS F SPORT)

F SPORT heated steering wheel (LS F SPORT AWD, LS F SPORT RWD w/All-Weather Package)

EXTERIOR COLORS



STARFIRE PEARL



LIQUID PLATINUM



NEBULA GRAY PEARL



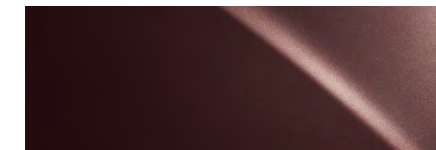
OBSIDIAN



MATADOR RED MICA



SATIN CASHMERE METALLIC



FIRE AGATE PEARL

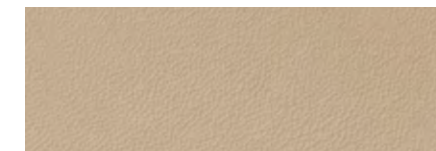


DEEP SEA MICA

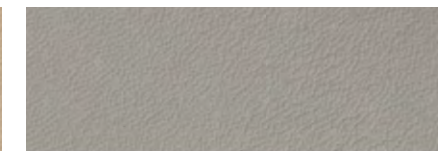


ULTRA WHITE*

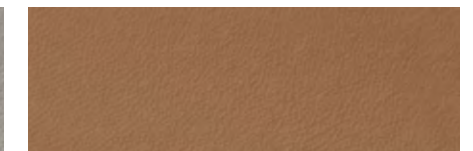
INTERIOR COLORS



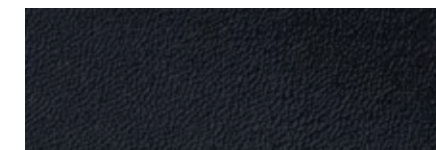
PARCHMENT LEATHER



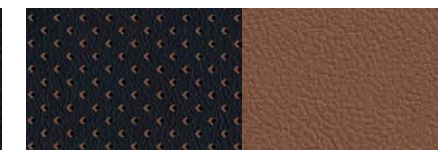
LIGHT GRAY LEATHER



FLAXEN LEATHER



BLACK LEATHER



BLACK AND SADDLE TAN LEATHER



BLACK WITH WHITE PERFORATIONS*

INTERIOR TRIM



DARK BROWN WALNUT



MATTE BAMBOO**



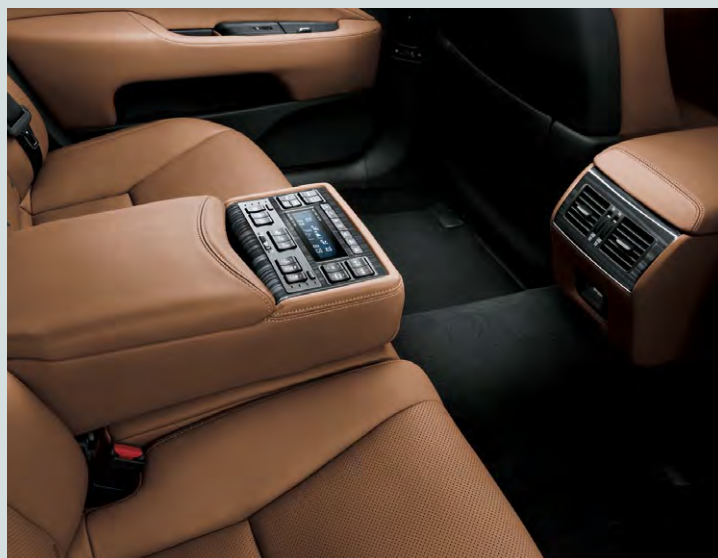
SHIMAMOKU ESPRESSO WOOD



MATTE DARK BROWN ASH BURL



GENUINE ALUMINUM*



REAR-SEAT COMFORT

Four-zone climate control, power-adjustable outboard seats, power rear and rear-door sunshades, and wood-trimmed climate and audio controls are just a few of the conveniences available from the rear seats of your LS.

For a complete list of standard features, options and accessories, please visit: lexus.com/LS/features.

COLOR AVAILABILITY

	STARFIRE PEARL	LIQUID PLATINUM	NEBULA GRAY PEARL	OBSIDIAN	MATADOR RED MICA	SATIN CASHMERE METALLIC	FIRE AGATE PEARL	DEEP SEA MICA	ULTRA WHITE*	DARK BROWN WALNUT	MATTE BAMBOO**	SHIMAMOKU ESPRESSO WOOD	MATTE DARK BROWN ASH BURL	GENUINE ALUMINUM*					
PARCHMENT LEATHER	●●			●●	●●	●●	●●	●●		●●	■								
LIGHT GRAY LEATHER	●●	●●	●●	●●	●●			●●				●●							
FLAXEN LEATHER	●●	●●	●●	●●	●●	●●	●●	●●			■	●●							
BLACK LEATHER	●●	●●	●●	●●	●●	●●	●●	●●			■	●●							
BLACK AND SADDLE TAN LEATHER	●●	●●	●●	●●	●●		●●	●●					●●						
BLACK WITH WHITE PERFORATIONS*		●	●	●	●			●	●					●					
INTERIOR COLOR										EXTERIOR COLOR					INTERIOR TRIM				

● LS ■ LSh

*F SPORT only. **LSh only.

OVERVIEW

Five-passenger luxury sedan (LS)
Five-passenger hybrid prestige luxury sedan (LSH)

ENGINE (LS)

TYPE

90° V8, aluminum block and heads, direct and port fuel injection

DISPLACEMENT

4.6 liters (281 cubic inches)

VALVETRAIN

Four cam, four valves per cylinder, with dual Variable Valve Timing with intelligence and Electronic intake valve timing (VVT-iE)

HORSEPOWER AT RPM

386 hp @ 6,400 (RWD);⁴

360 hp @ 6,400 (AWD)⁴

TORQUE AT RPM

367 lb-ft @ 4,100 (RWD);⁴

347 lb-ft @ 4,100 (AWD)⁴

EMISSION RATING

Certified Ultra-Low Emission Vehicle (ULEV II)

FUEL REQUIREMENT

Premium unleaded, 91 octane

ENGINE (LSH)

TYPE

90° V8, aluminum block and heads, direct and port fuel injection

DISPLACEMENT

5.0 liters (303 cubic inches)

VALVETRAIN

Four cam, four valves per cylinder, with dual Variable Valve Timing with intelligence and Electronic intake valve timing (VVT-iE)

ELECTRIC DRIVE MOTOR

High-output, permanent-magnet, electric-drive motor

TOTAL SYSTEM HORSEPOWER

438 hp⁴

EMISSION RATING

Certified Super Ultra-Low Emission Vehicle (SULEV II)

FUEL REQUIREMENT

Premium unleaded, 91 octane

CHASSIS (LS/LSH)

FRONT SUSPENSION

Independent upper and lower multi-link double joint suspension arms with stabilizer bar. Coil-over monotube shock absorbers (LS); Adaptive Variable Air Suspension with air springs, integrated shock absorbers (LSH, available LS), F SPORT-tuned and lowered (LS F SPORT)

REAR SUSPENSION

Independent multi-link with stabilizer bar. Coil-over monotube shock absorbers (LS); Adaptive Variable Air Suspension with air springs, integrated shock absorbers (LSH, available LS), F SPORT-tuned and lowered (LS F SPORT)

STEERING

Electronic Power Steering (EPS) (LS)

Electronic Power Steering (EPS) with Variable Gear-Ratio Steering (VGRS) (LSH, LS F SPORT, available LS LWB)

BRAKING SYSTEM

Four-wheel power-assisted ventilated disc brakes with Electronic Controlled Braking (ECB), four-sensor, four-channel Anti-lock Braking System (ABS), Electronic Brakeforce Distribution (EBD) and Brake Assist¹⁴

Regenerative braking function (LSH)

FRONT BRAKES

Opposed four-piston calipers (LS, LSH); 13.1-in ventilated discs (LS); 14.0-in ventilated discs (LS AWD, LSH)

Brembo opposed six-piston calipers with 14.9-in ventilated discs³ (LS F SPORT)

REAR BRAKES

Opposed two-piston calipers. 12.3-in ventilated discs (LS); 13.1-in ventilated discs (LS AWD, LSH, LS F SPORT)

WHEELS AND TIRES

18 x 7.5-in split-five-spoke alloy wheels with 235/50VR18 all-season tires¹ (LS)

19 x 8.0-in split-seven-spoke alloy wheels with 245/45VR19 summer or all-season tires^{1†} (LSH, available LS)

19 x 8.0-in 15-spoke alloy wheels with 245/45VR19 summer or all-season tires¹ (available LS)

19 x 8.0-in split-10-spoke forged alloy wheels by BBS with 245/45VR19 summer (RWD) or all-season (AWD) tires¹ (LS F SPORT)

DRIVETRAIN

TRANSMISSION

Eight-speed sequential-shift automatic Electronically Controlled Transmission with intelligence (ECT-i) (LS); paddle shifters (LS F SPORT)

Electronically controlled Continuously Variable Transmission (ECVT-i) (LSH)

DRIVE WHEELS

Rear-wheel drive (RWD) (LS); with TORSEN[®] limited-slip rear differential²⁰ (LS F SPORT RWD)

Full-time all-wheel drive (AWD) with TORSEN[®] limited-slip center differential (LS AWD, LSH, LS F SPORT AWD)

PERFORMANCE

0-60 MPH ACCELERATION

5.4 seconds⁴¹⁰ (LS, LS F SPORT RWD)

6.0 seconds⁴¹⁰ (LS, LS F SPORT AWD)

5.6 seconds⁴¹⁰ (LSH)

1/4-MILE ACCELERATION

13.4 seconds⁴¹⁰ (LS, LS F SPORT RWD)

14.2 seconds⁴¹⁰ (LS, LS F SPORT AWD)

13.7 seconds⁴¹⁰ (LSH)

TOP TRACK SPEED

(electronically limited)

130 mph⁴¹⁰

EPA FUEL ECONOMY ESTIMATES

(city/highway/combined)

16/24/19 mpg²⁴ (LS, LS F SPORT RWD)

16/23/18 mpg²⁴ (LS, LS F SPORT AWD)

19/23/20 mpg²⁴ (LSH)

TURNING CIRCLE

(curb-to-curb)

35.4 ft (LS, LS F SPORT RWD)

37.4 ft (LS, LS F SPORT AWD)

38.8 ft (LSH)

WHEELS



18-in split-five-spoke alloy wheels¹
STANDARD LS



19-in split-10-spoke
forged alloy wheels¹ by BBS
STANDARD LS F SPORT



19-in split-seven-spoke alloy wheels¹
STANDARD LSH
AVAILABLE LS



19-in 15-spoke alloy wheels¹
AVAILABLE LS



19-in 15-spoke chrome-finished
alloy wheels¹

BODY AND DIMENSIONS

HEADROOM

front/rear
38.0/37.9 in (965/964 mm)

HEIGHT

57.3 in (1,445 mm) (LS F SPORT)
58.1 in (1,475 mm) (LS)
57.7 in (1,465 mm) (LS w/air suspension)
58.3 in (1,480 mm) (LS AWD, LSH)

WIDTH

73.8 in (1,875 mm)

SHOULDER ROOM

58.5/56.9 in (1,487/1,446 mm) (LS)
58.5/56.4 in (1,487/1,432 mm) (LS LWB, LSH)

TRUNK CAPACITY

18.0 cu ft (510 L) (LS)
13.0 cu ft (370 L) (LSH)

FUEL-TANK CAPACITY

22.2 gal (84 L)

CURB WEIGHT

4,233 lb (1,920 kg) (LS)
4,277 lb (1,940 kg) (LS LWB RWD)
4,365 lb (1,980 kg) (LS F SPORT RWD)
4,652 lb (2,110 kg) (LS AWD)
4,674 lb (2,120 kg) (LS F SPORT AWD)
4,696 lb (2,130 kg) (LS LWB AWD)

WHEELBASE

116.9 in (2,970 mm) (LS, LS F SPORT)
121.7 in (3,090 mm) (LS LWB, LSH)

OVERALL LENGTH

200.0 in (5,090 mm) (LS, LS F SPORT)
205.0 in (5,210 mm) (LS LWB, LSH)



LS 460



LS 600h L



THE LS ACCESSORY LINE

Whether you're looking for a distinctive style, enhanced capability or added peace of mind, our line of genuine Lexus accessories offers something for every model. Designed and tested exclusively by our engineers for a precise fit and finish, they offer 100% Lexus quality along with a comprehensive, nationwide warranty. Learn more at lexus.com/accessories.

19-in 15-spoke chrome-finished alloy wheels¹

Alloy wheel locks

All-weather floor mats²⁵

Ashtray cup

Cargo net - envelope

Carpet trunk mat

Door edge guards

First aid kit

Paint protection film²⁶

Rear bumper appliqué

Wireless headphones¹⁸

¹Not available on AWD model.

For a complete list of vehicle specifications, please visit:
LS: lexus.com/LS/specs LS F SPORT: lexus.com/LSFSports/specs LSH: lexus.com/LSH/specs

Vehicles shown with available equipment.

STANDARD LUXURY FEATURES

LUXURY AND CONVENIENCE

SmartAccess^{27,28} with push-button Start/Stop; SmartAccess^{27,28} card key (LSH)

Remote-linked window/moonroof opening and closing

Dual-zone automatic climate control with interior air filter, smog sensor and automatic recirculation mode

Lexus Memory System to control power driver's seat (except lumbar), outside mirrors and steering wheel

Power tilt-and-telescopic steering column

Power windows and tilt-and-slide moonroof with one-touch open/close

Electrochromic (auto-dimming) inside rearview mirror and outside mirrors

Power door closers and power trunk open/close (LS LWB, LSh)

HomeLink[®] universal transceiver to operate compatible garage, gate, home lighting and home security systems

Power rear sunshade (LS LWB, LSh); power rear-door sunshades (LSH)

Laminated side glass

Scratch-resistant clearcoat paint

SEATING AND TRIM

Dark brown walnut, matte bamboo, Shimamoku espresso wood, matte dark brown ash burl or genuine aluminum trim

Leather-trimmed interior (LS, LS LWB); semi-aniline leather-trimmed interior with leather-trimmed instrument panel (LSH)

Alcantara headliner (LSH)

Black Alcantara headliner (LS F SPORT)

Heated steering wheel (AWD models, LSh); with leather center pad (LSH)

Wood-trimmed interior assist grips (LSH)

16-way driver's (including dual-function lumbar) with auto slide-away and 12-way front passenger's (including lumbar) power seats

Front seat Climate Concierge with climate-comfort front seats (LS LWB, LSh)

Climate-comfort rear seats and enhanced interior heater (LSH)

Height-adjustable headrests for all seats

COMMUNICATION, AUDIO AND NAVIGATION

Navigation System⁵ with Remote Touch²⁹ device, 12.3-in multimedia center-console display with integrated backup camera³⁰ and Enhanced Bluetooth[®] technology³¹

Lexus Enform App Suite⁹ with Bing, iHeartRadio, MovieTickets.com, OpenTable, Pandora, Yelp and Facebook Places. Subscription required. One-year trial subscription included

Lexus 10-speaker Premium Sound System with Digital Sound Processor, Automatic Sound Levelizer (ASL), HD Radio^{TM32} with iTunes^{®33} tagging and DVD/CD player (LS, LS LWB)

Mark Levinson 450-watt, 19-speaker Reference Surround Sound Audio System⁷ and DVD/CD player (LSH)

SiriusXM Satellite Radio^{5,34} Subscription required. 90-day trial subscription included

NavTraffic^{TM5,34} NavWeather^{TM5,34} Fuel Prices, and Sports and Stocks^{5,34} Subscription required. 90-day trial subscription included

USB iPod^{®33} connectivity

Bluetooth[®] wireless audio³⁵ profile integration of compatible music players and audio system

INSTRUMENTATION AND CONTROLS

Steering-wheel-mounted audio, phone, brake-hold and display controls

Electroluminescent instrumentation with TFT multi-information display

Illuminated interior electronic trunk-lid and fuel-filler door releases

Drive Mode Select with ECO, Normal and Sport modes (LS)

Drive Mode Select with ECO, Normal, Comfort, Sport S and Sport S+ modes (LS F SPORT, LS w/Adaptive Variable Air Suspension)

Drive Mode Select with ECO, Normal, Comfort, Sport S, Sport S+ and EV modes³⁶ (LSH)

Intuitive Parking Assist

GPS-linked analog clock

SAFETY AND SECURITY FEATURES

ACTIVE SAFETY

Vehicle Dynamics Integrated Management (VDIM)¹¹ with Vehicle Stability Control (VSC)¹¹ and Traction Control (TRAC)

Four-wheel ventilated power-assisted disc brakes with Electronic Controlled Braking (ECB); four-sensor, four-channel Anti-lock Braking System (ABS); Brake Assist¹⁴ and Electronic Brakeforce Distribution (EBD)

Smart Stop Technology³⁷

Direct Tire Pressure Monitor System³⁸

Four-wheel ventilated power-assisted disc brakes

Water-repellent front-door glass

Power-adjustable, auto-folding outside mirrors with turn indicators, defoggers, puddle lamps and auto tilt-down in reverse

Rain-sensing intermittent windshield wipers with mist cycle

Rear-window defogger with auto-off timer

High-Intensity Discharge headlamps with dynamic auto leveling (LS)

LED headlamps with dynamic auto leveling and intelligent high-beam headlamps (LSH)

Dual-swivel Adaptive Front Lighting System (AFS)³⁹

LED daytime running lights

LED foglamps

LED taillamps

PASSIVE SAFETY

Driver's and front passenger's advanced airbag system (SRS)¹⁷ with front passenger's twin-chamber airbag (SRS)¹⁷

Front seat-mounted side airbags (SRS)¹⁷

Rear seat-mounted side airbags (SRS)¹⁷ (LSH)

Driver's and front passenger's knee airbags (SRS)¹⁷

Front and rear side curtain airbags (SRS)¹⁷

SECURITY

Available Safety Connect⁴¹ features Automatic Collision Notification, Stolen Vehicle Location, Emergency Assistance Button (SOS) and Enhanced Roadside Assistance⁴² services. Subscription required. One-year trial subscription included

Vehicle theft-deterrent and engine-immobilizer system²⁸

Emergency interior trunk release

First aid kit

Tool kit

Whiplash Injury Lessening (WIL) front seats⁴⁰

Three-point seatbelts for all seating positions, pre-tensioners with force limiters for front and outboard rear seats

Automatic Locking Retractor/Emergency Locking Retractor (ALR/ELR) seatbelts for rear outboard seating positions

Emergency Locking Retractor (ELR) only for driver's seat

Height-adjustable front shoulder belt anchors

Child Restraint Seat (CRS) tether anchor brackets for rear outboard seating positions

Highly rigid body structure with front and rear crumple zones

Side-impact door beams

Reinforcements in pillars and door sills

Impact-dissipating upper interior trim

Collapsible steering column



REMOTE TOUCH

The ergonomic Remote Touch²⁹ device functions similarly to a mouse, providing the driver and front passenger with convenient access to a range of features.



GPS-LINKED CLOCK

The analog clock has self-illuminating hands, and it automatically changes based on your location. It is mounted in two types of genuine aluminum to create an elegant, contrasting look.



LED FOGLEMPS

Accentuating the look of the spindle grille, the new foglamps not only contribute to the exciting new design of the LS, but they also outperform conventional bulbs while being more energy-efficient at the same time.



PURPOSEFUL DESIGN

Each of the textures of the interior was thoughtfully put into place in order to bring out an authentic expression of the material. For example, the shape of the leather trim evokes the tension of leather being stretched. Likewise, the aluminum trim design is inspired by metal being carved and polished.

WARRANTY

Four-year/50,000-mile Lexus Limited Warranty. Eight-year/100,000-mile Hybrid System Warranty. Six-year/70,000-mile Powertrain Warranty. Six-year/unlimited-mileage Corrosion Perforation Warranty. All warranties with zero deductible. See the *LS Warranty and Services Guide* at your Lexus dealer for details.

1. 18- or 19-in performance tires are expected to experience greater tire wear than conventional tires. Tire life may be substantially less than 15,000 miles, depending upon driving conditions. **2.** Advanced Pre-Collision System is designed to help reduce the crash speed and damage in certain frontal collisions only. Driver Attention Monitor is designed to alert the driver if a potential hazard is detected ahead and the driver's face appears to be turned away. They are not collision-avoidance systems and are not substitutes for safe and attentive driving. System effectiveness depends on many factors. See *Owner's Manual* for details. **3.** High-friction brakes require periodic inspection and measurement as outlined in the *Warranty and Services Guide*. The pads and rotors are expected to experience greater wear than conventional brakes. Pad life may be less than 20,000 miles, and brake rotor life may be less than 50,000 miles depending on driving conditions. **4.** Ratings achieved using the required premium unleaded gasoline with an octane rating of 91 or higher. If premium fuel is not used, performance will decrease. **5.** Availability and accuracy of the information provided by the Navigation System or any SiriusXM services mentioned (if installed) are dependent upon many factors. Use common sense when relying on information provided. Services not available in every city or roadway. Periodic Navigation updates available at additional cost. See *Navigation System Owner's Manual* or contact SiriusXM for details. **6.** Always drive safely, obey traffic laws & focus on the road while driving. Apps/services vary by phone/carrier; functionality depends on many factors. Select apps use large amounts of data, you are responsible for charges. Apps/services are subject to change. Apps identified by TM or [®] are trademarks or registered trademarks of their respective companies. For enrollment, cost and more details, see lexus.com/enform. **7.** Mark Levinson is a registered trademark of Harman International Industries, Inc. **8.** Leg rest may not fully recline based on height of rear-seat passenger. Do not allow passengers to sit in a seat that has been fully or severely reclined while driving. This feature is intended for use only when the vehicle is parked. While the vehicle is being driven, all vehicle occupants should have the seatback upright, sit well back in the seat and properly wear the seatbelts provided. In the event of a collision, the more the seat is reclined, the greater the risk of death or personal injury. See *Owner's Manual* for additional information. **9.** If leg rest is in use, seating capacity could be reduced from four to three. **10.** Performance figures are for comparison only and were obtained with prototype vehicles by professional drivers using special safety equipment and procedures. Do not attempt. **11.** Vehicle Stability Control (VSC) and Vehicle Dynamics Integrated Management (VDIM) are electronic systems designed to help the driver maintain control under adverse conditions. They are not substitutes for safe driving practices. Factors including speed, road conditions and driver steering input can all affect whether VSC and VDIM will be effective in preventing a loss of control. See *Owner's Manual* for further details. **12.** The Driver Attention Monitor is designed to alert the driver if a potential hazard is detected ahead and the driver's face appears to be turned away. It is not a collision-avoidance system and is not a substitute for safe and attentive driving. System effectiveness depends on many factors. See *Owner's Manual* for further information. **13.** Lane Keep Assist is designed to read the lane markers under certain conditions. It provides a visual and audible alert and provides slight steering force when lane departure is detected. It is not a collision-avoidance system or a substitute for safe and attentive driving. Effectiveness depends on many factors. See *Owner's Manual* for more information. **14.** Brake Assist is designed to help the driver take full advantage of the benefits of ABS. It is not a substitute for safe driving practices. Braking effectiveness also depends on proper brake-system maintenance, tire and road conditions. **15.** Do not rely exclusively on the Blind Spot Monitor. Always look over your shoulder and use your turn signal. There are several limitations to the function, detection, range and clarity of the monitor. For a complete list of limitations and directions regarding use of the monitor, see *Owner's Manual*. **16.** Do not rely exclusively on the Rear Cross-Traffic Alert system. There are limitations to the function, detection and range of the system. You should also look around outside your vehicle, over your shoulder and use your mirrors to confirm rearward clearance. See *Owner's Manual* for details. **17.** All the airbag (AB) systems are Supplemental Restraint Systems. All ABs (if installed) are designed to inflate only under certain conditions and in certain types of severe collisions: frontal and knee ABs typically inflate in frontal collisions; side and side curtain ABs in side collisions; Roll-Sensing Curtain ABs at a severe tilt degree, roll or lateral G-force. In all other accidents, the ABs will not inflate. To decrease the risk of injury from an inflating AB, always wear seatbelts, sit upright in the middle of the seat as far back as possible and do not lean against the door. Do not put objects in front of an AB or around the seatback. Do not use a rearward-facing child seat in any front passenger seat. The force of an inflating AB may cause serious injury or death. Please see your *Owner's Manual* for further information/warnings. **18.** Headphones are for passenger use only. Do not use while operating vehicle. **19.** The Pedestrian Detection System, part of the Advanced Pre-Collision System, is designed to detect the presence of a pedestrian ahead of the vehicle, to determine if impact with the pedestrian is imminent and to help reduce impact speed. It is not a collision-avoidance system and is not a substitute for safe and attentive driving. System effectiveness depends on many factors, such as speed, size and position of pedestrians, driver input and weather, light and road conditions. See *Owner's Manual* for further information. **20.** TORSEN[®] is a registered trademark of Zexel Torsen, Inc. **21.** The Pre-Collision System is designed to help reduce the crash speed and damage in certain frontal collisions only. It is not a collision-avoidance system and is not a substitute for safe and attentive driving. System effectiveness depends on many factors, such as speed, driver input and road conditions. See *Owner's Manual* for further information. **22.** Intelligent high-beams system operates at speeds above 21 mph. Situations such as a dirty windshield, variable weather, lighting conditions and hilly terrain will limit effectiveness, requiring the driver to manually turn off. See *Owner's Manual* for details. **23.** Continuous average power, all channels driven, at less than 0.1% THD; 20–20,000 Hz. **24.** EPA MPG Estimates. Actual mileage will vary. **25.** To avoid potential interference with pedal operation, do not install a floor mat on top of an existing floor mat, and each mat must be secured with either quarter-turn fasteners or retention hooks (clips). This floor mat was designed specifically for use in this model and model year vehicle and SHOULD NOT be used in any other vehicle. **26.** Lexus Genuine Accessory Warranty will only apply when the installation is performed by a trained Lexus-approved installer. If the film is installed by anyone else, the Lexus "Parts Only" warranty – 12 months – will be applicable instead. See dealer for details. **27.** The SmartAccess system may interfere with some pacemakers or cardiac defibrillators. If you have one of these medical devices, please talk to your doctor to see if you should deactivate this system. **28.** The engine immobilizer is a state-of-the-art anti-theft system. When you insert your key into the ignition switch or bring a SmartAccess fob into the vehicle, the key transmits an electronic code to the vehicle. The engine will only start if the code in the transponder chip inside the key or SmartAccess fob matches the code in the vehicle's immobilizer. Because the transponder chip is embedded in the key or SmartAccess fob, it can be costly to replace. If you lose a key or SmartAccess fob, your Lexus dealer can help. Alternatively, you can find a qualified independent locksmith to perform high-security key services by consulting your local *Yellow Pages* or by contacting www.aloa.org. **29.** Be sure to obey traffic regulations and maintain awareness of road and traffic conditions. **30.** The backup camera does not provide a comprehensive view of the rear area of the vehicle. You should also look around outside your vehicle and use your mirrors to confirm rearward clearance. Cold weather may limit effectiveness and view may become cloudy. **31.** Bluetooth technology phones listed on lexus.com have been tested for compatibility with Lexus vehicles. Performance will vary based on phone software version, coverage and your wireless carrier. Phones are warranted by their manufacturer, not Lexus. The Bluetooth word mark and logos are registered trademarks owned by Bluetooth SIG, Inc. and any use of such marks by Lexus is under license. Other trademarks and trade names are those of their respective owners. **32.** HD Radio[™] Technology manufactured under license from iBiquity Digital Corporation U.S. and Foreign Patents. HD Radio[™] and the HD, HD Radio, and "Arc" logos are proprietary trademarks of iBiquity Digital Corp. **33.** iTunes and iPod are registered trademarks of Apple Inc. All rights reserved. **34.** SiriusXM services require a subscription after trial period. Subscriptions governed by SiriusXM Customer Agreement available at siriusxm.com. **If you decide to continue your SiriusXM service at the end of your complimentary trial, the plan you choose will automatically renew and bill at then-current rates unless you call 1-800-967-2346 to cancel.** Fees and programming subject to change. Available only to those at least 18 years of age in the 48 contiguous United States and DC. **35.** Bluetooth audio device must be enabled with A2DP and AVRCP. **36.** CAUTION! When driving a hybrid vehicle, pay special attention to the area around the vehicle. Because there is little vehicle noise in electric-only mode, pedestrians, people riding bicycles or other people and vehicles in the area may not be aware of the vehicle starting off or approaching them, so take extra care while driving. EV mode works under certain conditions at low speeds for up to a mile. See *Owner's Manual*. **37.** Smart Stop Technology operates only in the event of certain simultaneous brake and gas pedal applications. When engaged, the system will reduce engine power to help the brakes bring the vehicle to a stop. Factors including speed, road conditions and driver input can all impact stopping distance. Smart Stop Technology is not a substitute for safe and attentive driving and does not guarantee instant stopping. See *Owner's Manual* for further details. **38.** The Tire Pressure Monitor System alerts the driver when tire pressure is critically low. For optimal tire wear and performance, tire pressure should be checked regularly with a gauge; do not rely solely on the monitor system. See *Owner's Manual* for details. **39.** The Adaptive Front Lighting System helps improve vision at night. Situations such as dirty windshield, rapidly changing light conditions or hilly terrain will limit effectiveness, requiring the driver to manually turn off. See *Owner's Manual* for details. **40.** Whiplash Injury Lessening front seats can help reduce the severity of whiplash injury in certain rear-end collisions. **41.** Contact with the response center may not be available in all areas. Service Agreements required. A variety of subscription terms available; charges will vary. See lexus.com for details. **42.** Coverage only available in the continental U.S. and Canada. See Lexus dealer for details.

*Lexus strives to build vehicles to match customer interest, and thus they typically are built with popular options and option packages. Not all options/packages are available separately, and some may not be available in all regions of the country. See lexus.com for information about options/packages commonly available in your area. If you would prefer a vehicle without any or with different options, contact your dealer to check for current availability or the possibility of placing a special order. Specifications, features, equipment, technical data, performance figures, options, and color and trim are based upon information available at time of printing, are subject to change without notice, and are for mainland U.S.A. vehicles only. Some vehicles shown with available equipment. See your Lexus dealer for details. Lexus reminds you to wear seatbelts, secure children in rear seat, obey all traffic laws and drive responsibly. For more information, call 800-USA-LEXUS (872-5398) or visit lexus.com. To learn more about your financing options, contact your Lexus dealer or call Lexus Financial Services at 800-874-7050.

