

LEXUS IS 250

Supercharge conversion ... **280Kw & 376Nm**

Engine Code...4GRFSE Model Code...5902

RGMotorsport decided to tackle this supercharge development knowing that Lexus IS 250 was an extremely refined motor vehicle that was hugely lacking in the performance division. After assessing the vehicle the RGM design team decided to do something completely different and the end result was an awesomely smooth and powerful Supercharged Lexus IS 250. As with all RGMotorsport bolt on supercharge conversions Liquid Charge Cooling was the best option as space is limited and we needed to avoid any air flow restrictions to the frontal area of the vehicle where the radiator is situated. The Lexus IS 250 comes in standard at **153Kw@6400rpm** and **252Nm@4800rpm**.

The RGMotorsport Supercharged Lexus IS 250 will give you **280Kw@6500rpm** and **376Nm@5500rpm**

VORTECH V2 SC TRIM POLISHED SUPERCHARGER.

The Vortech centrifugal supercharger unit we use is a V2 SC-Trim straight polished. This unit is renowned for its quiet working operation as well as its reliability. What is extremely unique on this conversion is that the supercharger unit is mounted on the lower right hand side of the engine and is driven by a Poly V-Belt off a newly designed and manufactured water pump pulley. The supercharger will boost is 0.5 bar (7psi). Lubrication is via high pressure oil feed and a gravitational return to the sump.

RGM/MRP LIQUID CHARGE COOLING.

We have, in this state of the art design used a RGM / MRP Liquid charge cooler as opposed to an Air-to-Air intercooler. In extensive testing we have reduced boost air temperature by up to 60 degrees Celsius. The header tank for the charge cooler is situated on the lower right hand side to lower the centre of gravity. An advantage of our installation and design that we utilize a high quality Setrab cooler that mounts on the lower frontal area of the vehicle so that we did not impede on the normal air flow to the radiator. This cooler is also fitted with an additional standalone electric water pump. The total capacity of the liquid cooled system is 6 litres and this is made up of 60% water and 40% Glycol (Anti-freeze). The RGM Liquid Charge Cooling system is a closed loop system and does not interfere with the vehicles cooling system what so ever.

RECIRCULATION VALVE (DUMP VALVE). We utilize the RGM/EXCEL recirculation valve (dump valve) to ensure that this conversion is extremely driveable at light throttle positions as well as to maintain boost when all out performance is required.

ELECTRONICS. The Unichip Q version that is utilized is a piggy back ECU that allows us to take control of the ignition timing and fueling. The road speed governor can be removed on request during the remapping process.



QUICK SPECS FOR LEXUS IS 250

- Vortech V 2 T-Trim centrifugal supercharger (0.5 bar) 7psi
- RGM/MRP Liquid charge cooled (closed loop system)
- **280Kw** as opposed to the standard **153kw**
- **376Nm** as opposed to the standard **252nm** of torque

Conversion
Time
10 Days

Document Info

LEXUS250_SP1
19/10/2009



LEXUS IS 250

Supercharge Conversion ...

RGM STAINLESS STEEL PERFORMANCE EXHAUST SYSTEM

RGM tailor builds a 57mm stainless steel performance exhaust system that gives the Lexus a performance tone but will still be conservative to the ear

This installation is a bolt-on conversion. The engine is not opened or tampered with in any way. No modifications are done to any of the structural components, making this conversion totally reversible. RGMotorsport believes it is the first tuning company to successfully supercharge the Lexus IS 250

This RGM bolt on Supercharge conversion for the is available in kit form .

Cost for bolt on supercharge kit excluding exhaust system... **R56,430.00** inc.vat (Local)

Cost for bolt on supercharge kit excluding exhaust system & shipping costs **R49,500.00** (Export abroad)

Additional Options Available

RGMotorsport has purposely designed and manufactured ceramic coated exhaust manifold branches that when utilized in conjunction with the Supercharge conversion offer all round performance gains

Cost for manifold branches fitted ... **R12643.75** inc.vat

GEROTEK ROAD TEST RGM SUPERCHARGED LEXUS IS 250 9TH APRIL 2009 (7AM)
TESTS CONDUCTED @ 6000 FEET ABOVE SEA LEVEL

Performance Acceleration

RGM S/C Lexus IS 250 (Auto)	Lexus IS 250 (Auto) Standard	
0-60 km/h	3.76	4.92
0-80 km/h	5.59	7.43
0-100 km/h	7.46	10.44
0-120 km/h	10.10	14.65
0 – 400 metres	15.90	17.67
Terminal speed 400m	155.63 km/h	133.12 km/h
0 – 1000 metres	28.47	31.56

Terminal speed over 1000 metres 203.46 km/h 170.40 km/h

Top speed over 5km 271.6 km/h 236 km/h

Overtaking Acceleration

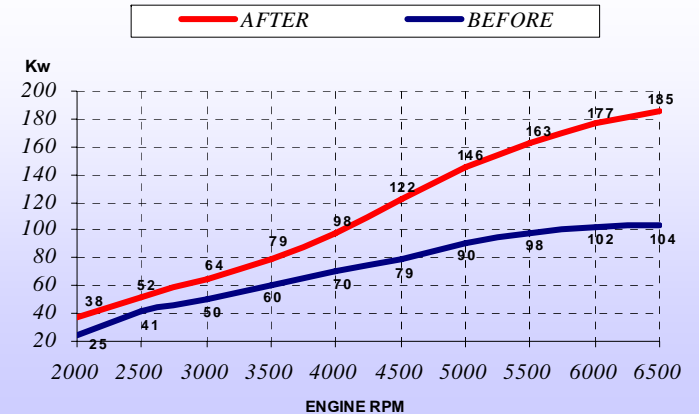
RGM S/C Lexus IS250 (A)	Lexus IS 250 (A) Standard	
60-80 km/h	1.83	2.51
80-100 km/h	1.87	3.01
100-120 km/h	2.64	4.21

Brake upgrades available for the front and rear. Please enquire on + 27-11-7928352

www.rgmotorsport.com

21 Hammer Avenue, Strydom Park, Randburg, South Africa
Tel: +27 11 792-8352 - Fax: +27 11 792-8353
info@rgmotorsport.com—rob@rgmotorsport.com

LEXUS IS 2500 Supercharged
Power measured in kw on the wheels



Installation & Warranty

The cost of the conversion is **R79,800.00** inc.vat including the

RGM 3 Year up to 100,000Km Warranty Policy
from date of first registration