

2008 ACCESSORIES & EQUIPMENT

Exterior - RX 350

FRONT BUMPER

COMPONENTS

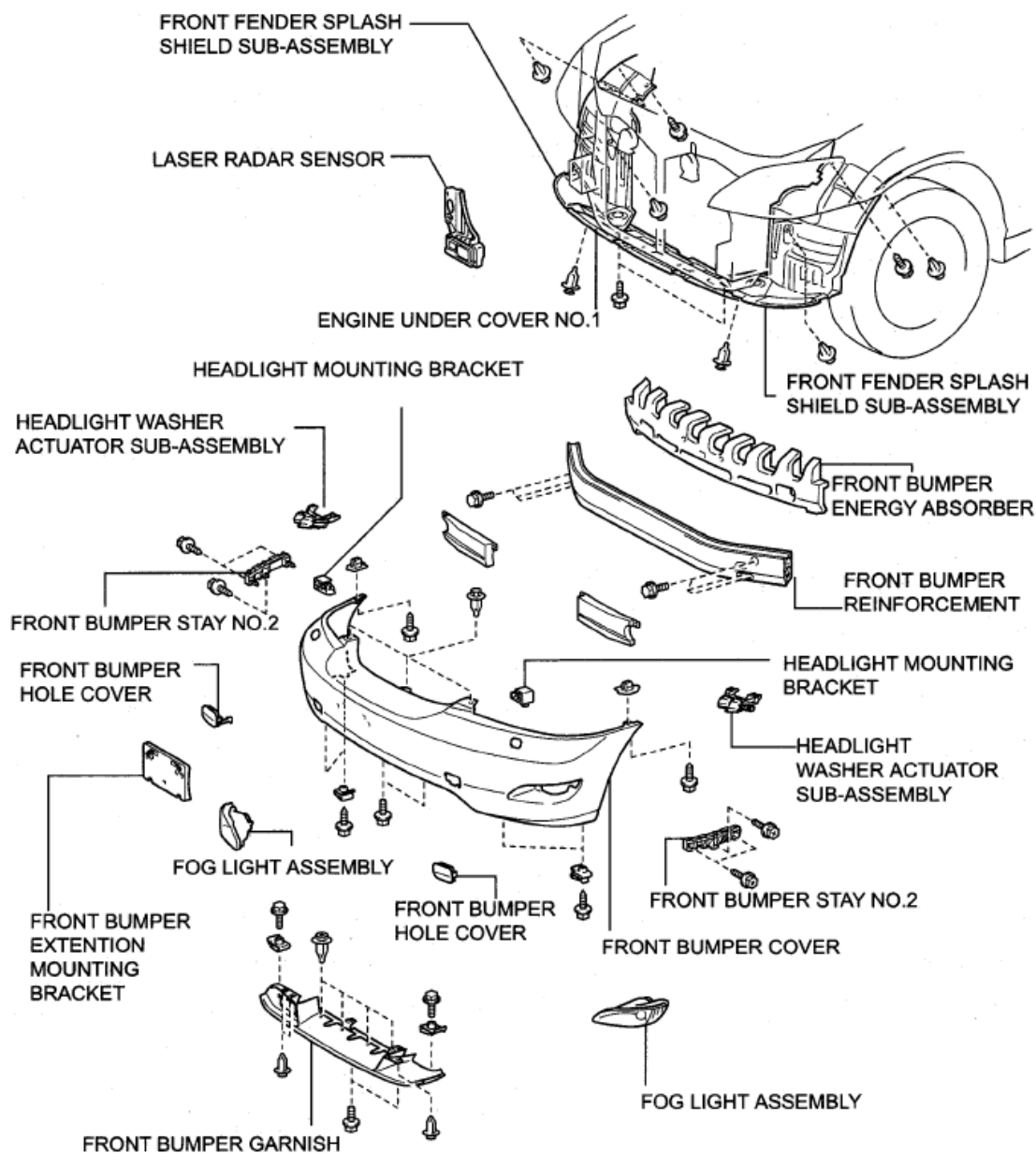


Fig. 1: Identifying Front Bumper Replacement Components

Courtesy of TOYOTA MOTOR SALES, U.S.A., INC.

REMOVAL

1. REMOVE ENGINE UNDER COVER NO.1

- a. Remove the 2 clips and 2 bolts.
- b. Remove the 2 screws and under cover.

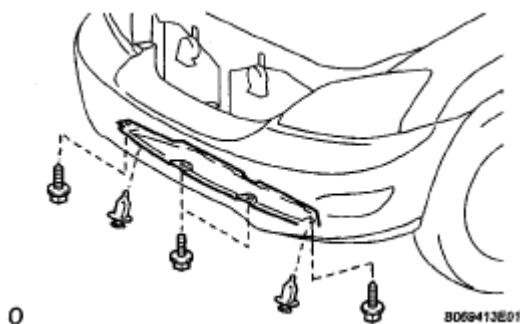


Fig. 2: Identifying Engine Under Cover No. 1

Courtesy of TOYOTA MOTOR SALES, U.S.A., INC.

2. REMOVE FRONT FENDER SPLASH SHIELD SUB-ASSEMBLY

- a. Remove the 2 screws and 2 clips.
- b. Partially remove the splash shield.

HINT:

Do not remove the splash shield completely but partially so that the bumper cover can be removed.

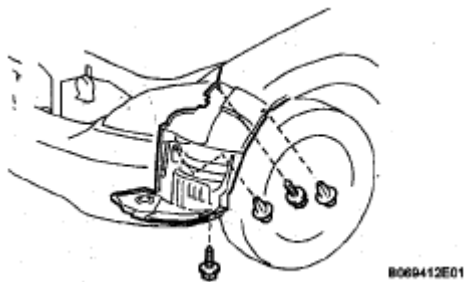


Fig. 3: Identifying Front Fender Splash Shield Screws & Clips

Courtesy of TOYOTA MOTOR SALES, U.S.A., INC.

3. REMOVE FRONT BUMPER COVER

- a. Put protective tape under the front fender.
- b. With Headlight washer:
 1. Remove the washer hose clip.

2. Using a screwdriver, pull out the front washer nozzle.

HINT:

Tape the screwdriver tip before use.

- c. Disconnect the fog light connectors.
- d. Remove the 2 screws and 3 clips.
- e. Using a screwdriver, disengage the 4 claws and remove the bumper cover.

HINT:

Tape the screwdriver tip before use.

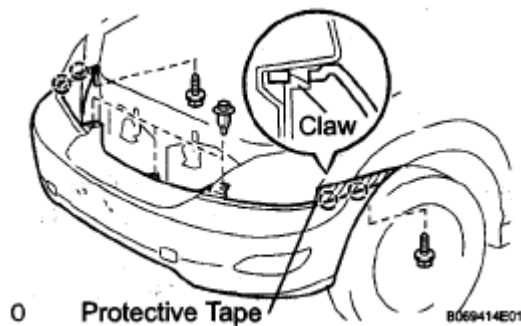


Fig. 4: Identifying Front Bumper Cover Screws & Clips
Courtesy of TOYOTA MOTOR SALES, U.S.A., INC.

DISASSEMBLY

1. **REMOVE HEADLIGHT WASHER ACTUATOR SUB-ASSEMBLY (w/ Headlight Cleaner)**
 - a. Remove the 2 screws and actuator.
2. **REMOVE FRONT BUMPER ENERGY ABSORBER**
3. **REMOVE FRONT BUMPER REINFORCEMENT**
 - a. Remove the 6 bolts and reinforcement.
4. **REMOVE LASER RADAR SENSOR**
 - a. Using a screwdriver, disconnect the wire harness clamp.

HINT:

Tape the screwdriver tip before use.

- b. Disconnect the sensor connector.
- c. Remove the sensor.
5. **REMOVE FRONT BUMPER STAY NO. 2**

- a. Remove the 3 screws and bumper stay.
6. **REMOVE FRONT BUMPER EXTENSION MOUNTING BRACKET**
 - a. Remove the 2 bolts and mounting bracket.
7. **REMOVE FRONT BUMPER GARNISH**
 - a. Remove the 2 bolts.
 - b. Using a screwdriver, remove the 7 clips and bumper garnish.

HINT:

Tape the screwdriver tip before use.

8. **REMOVE FOG LIGHT ASSEMBLY**
 - a. Disengage the 2 claws and remove the fog light.
9. **REMOVE FRONT BUMPER HOLE COVER**
 - a. Using a screwdriver, disengage the 2 claws and remove the hole cover.

HINT:

Tape the screwdriver tip before use.

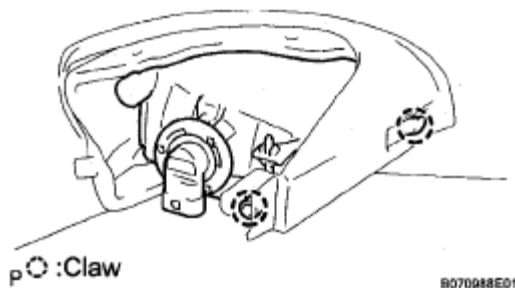


Fig. 5: Identifying Front Bumper Hole Cover Claws
Courtesy of TOYOTA MOTOR SALES, U.S.A., INC.

10. **REMOVE HEADLIGHT MOUNTING BRACKET**

REASSEMBLY

1. **INSTALL HEADLIGHT MOUNTING BRACKET**
2. **INSTALL FRONT BUMPER COVER**
3. **INSTALL FOG LIGHT ASSEMBLY**
4. **INSTALL FRONT BUMPER GARNISH**
5. **INSTALL FRONT BUMPER EXTENSION MOUNTING BRACKET**
6. **INSTALL FRONT BUMPER STAY NO. 2**
7. **INSTALL LASER RADAR SENSOR**

8. INSTALL FRONT BUMPER REINFORCEMENT

- a. Install the reinforcement with the 6 bolts.

Torque: 77 N*m (780 kgf*cm, 57 ft.*lbf)

9. INSTALL FRONT BUMPER ENERGY ABSORBER

10. INSTALL HEADLIGHT WASHER ACTUATOR SUB-ASSEMBLY (w/ Headlight Cleaner)

INSTALLATION

1. INSTALL FRONT BUMPER COVER

- a. Install the bumper cover with the 2 screws and 3 clips.
- b. Connect the fog light connectors.

2. INSTALL FRONT FENDER SPLASH SHIELD SUB-ASSEMBLY

- a. Install the splash shield with the 2 screws and 2 clips.

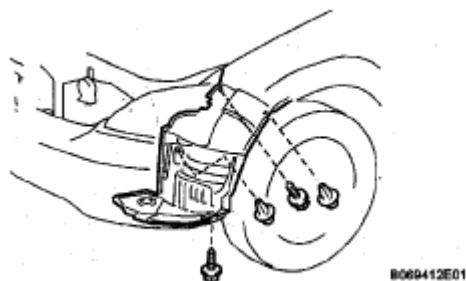
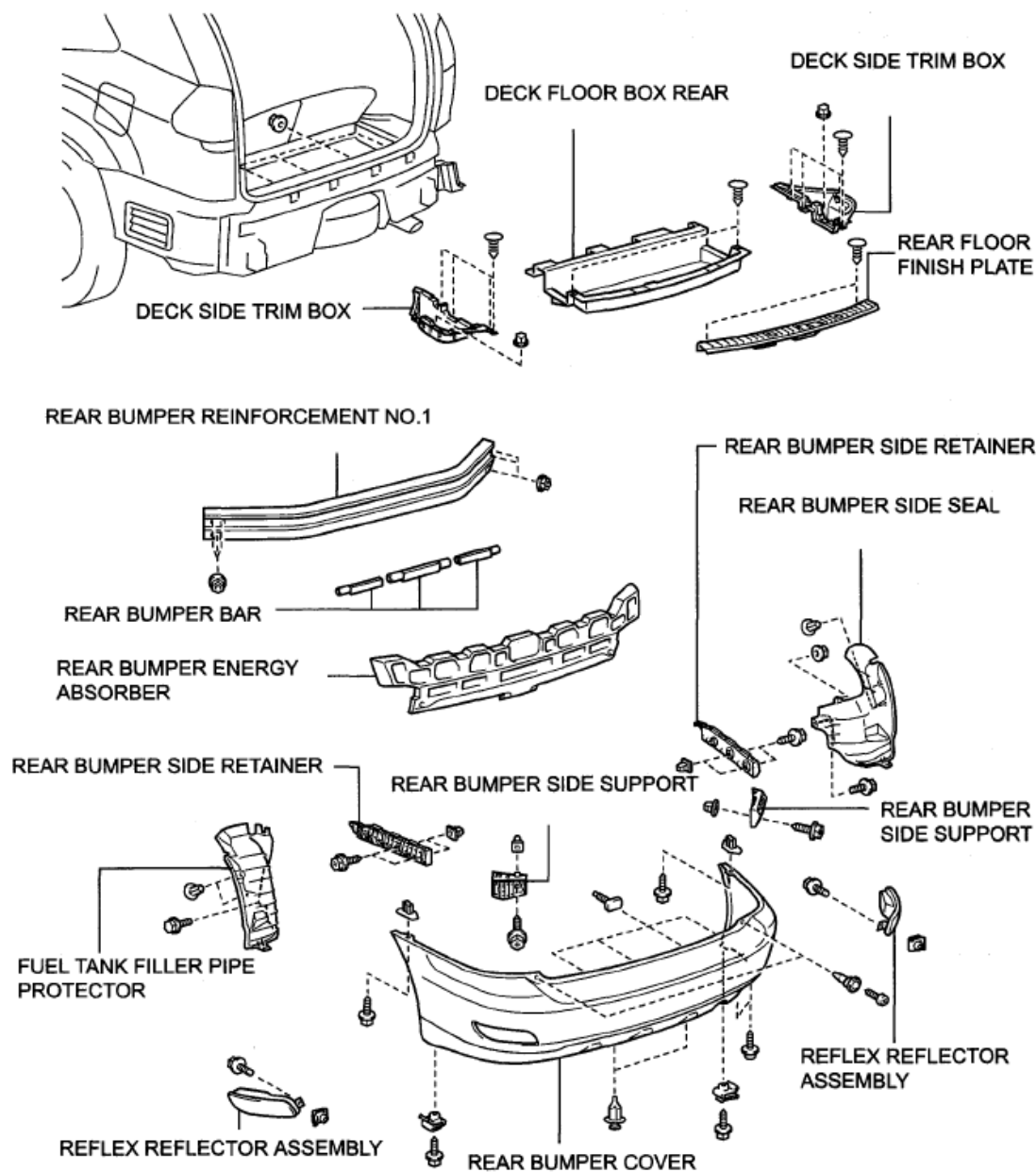


Fig. 6: Identifying Front Fender Splash Shield Screws & Clips
Courtesy of TOYOTA MOTOR SALES, U.S.A., INC.

3. INSTALL ENGINE UNDER COVER NO.1

REAR BUMPER

COMPONENTS



0

8119168E02

Fig. 7: Identifying Rear Bumper Replacement Components
 Courtesy of TOYOTA MOTOR SALES, U.S.A., INC.

REMOVAL

1. REMOVE REAR FLOOR FINISH PLATE

- a. Remove the 2 clips (A).
- b. Using a screwdriver, disengage the 2 claws, 6 clips (B) and remove the finish plate.

HINT:

Tape the screwdriver tip before use.

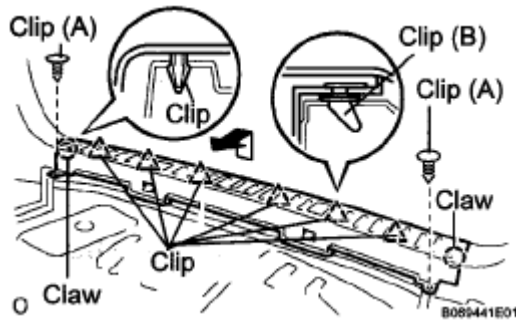


Fig. 8: Identifying Rear Floor Finish Plate Claws & Clips
 Courtesy of TOYOTA MOTOR SALES, U.S.A., INC.

2. **REMOVE DECK FLOOR BOX REAR** (See **REMOVAL**)
3. **REMOVE DECK SIDE TRIM BOX** (See **REMOVAL**)
4. **REMOVE REAR BUMPER SIDE SEAL**
 - a. Remove the clip, nut, bolt and side seal.
5. **REMOVE FUEL TANK FILLER PIPE PROTECTOR**
 - a. Remove the 2 clips, bolt and protector.
6. **REMOVE REAR BUMPER COVER**
 - a. Put protective tape under the quarter panel.
 - b. Remove the 2 clips and nuts.
 - c. With Air suspension system: Remove the 6 screws.
 - d. Without Air suspension system: Remove the 4 screws.
 - e. Using a screwdriver, disengage the 10 claws and remove the bumper cover.

HINT:

Tape the screwdriver tip before use.

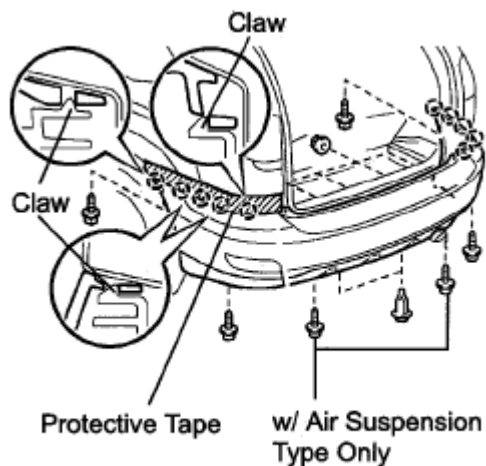


Fig. 9: Identifying Rear Bumper Cover Screws & Claws
 Courtesy of TOYOTA MOTOR SALES, U.S.A., INC.

DISASSEMBLY

1. **REMOVE REAR BUMPER ENERGY ABSORBER**
2. **REMOVE REAR BUMPER BAR**
3. **REMOVE REAR BUMPER REINFORCEMENT NO.1**
 - a. Remove the 6 nuts and reinforcement.
4. **REMOVE REAR BUMPER SIDE SUPPORT**
 - a. Remove the screw and side support.
5. **REMOVE REAR BUMPER SIDE RETAINER**
 - a. Remove the 2 screws and side retainer.
6. **REMOVE REFLEX REFLECTOR ASSEMBLY**
 - a. Remove the bolt and reflector.

REASSEMBLY

1. **INSTALL REFLEX REFLECTOR ASSEMBLY**
2. **INSTALL REAR BUMPER SIDE RETAINER**
3. **INSTALL REAR BUMPER SIDE SUPPORT**
4. **INSTALL REAR BUMPER REINFORCEMENT NO.1**
 - a. Install the reinforcement with the 6 nuts.

Torque: 27 N*m (275 kgf*cm, 20 ft.*lbf)

5. **INSTALL REAR BUMPER BAR**
6. **INSTALL REAR BUMPER ENERGY ABSORBER**

INSTALLATION

- 1. INSTALL REAR BUMPER COVER**
 - a. Engage the 10 claws and install the bumper cover.
 - b. With Air suspension system: Install the 6 screws.
 - c. Without Air suspension system: Install the 4 screws.
 - d. Install the 2 clips and 4 nuts.
- 2. INSTALL FUEL TANK FILLER PIPE PROTECTOR**
- 3. INSTALL REAR BUMPER SIDE SEAL**
- 4. INSTALL DECK SIDE TRIM BOX**
- 5. INSTALL DECK FLOOR BOX REAR**
- 6. INSTALL REAR FLOOR FINISH PLATE**

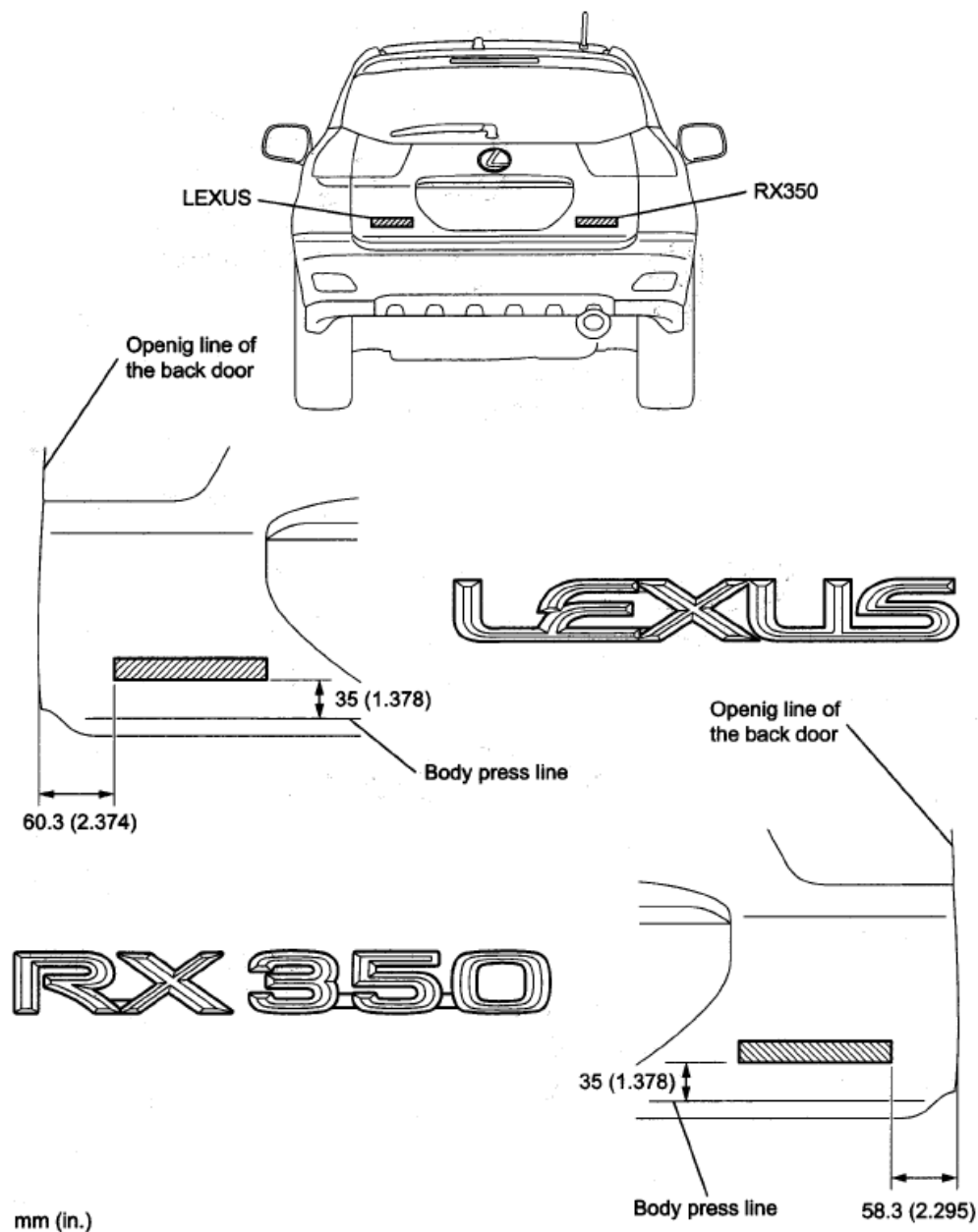
NAME PLATE

REPLACEMENT

- 1. INSTALL NAME PLATE**

2008 Lexus RX 350

2008 ACCESSORIES & EQUIPMENT Exterior - RX 350



P

B136681E01

Fig. 10: Identifying Name Plate Dimension

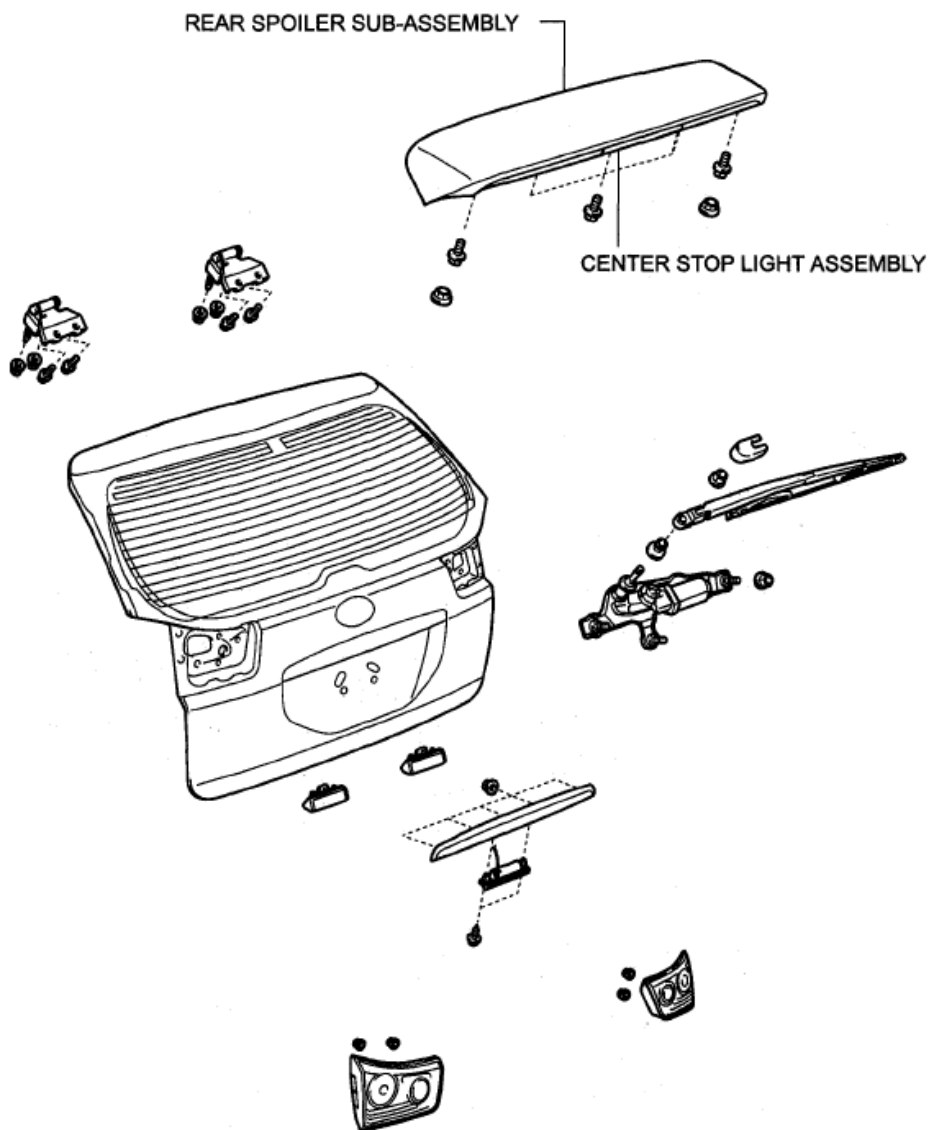
Courtesy of TOYOTA MOTOR SALES, U.S.A., INC.

REAR SPOILER

COMPONENTS

2008 Lexus RX 350

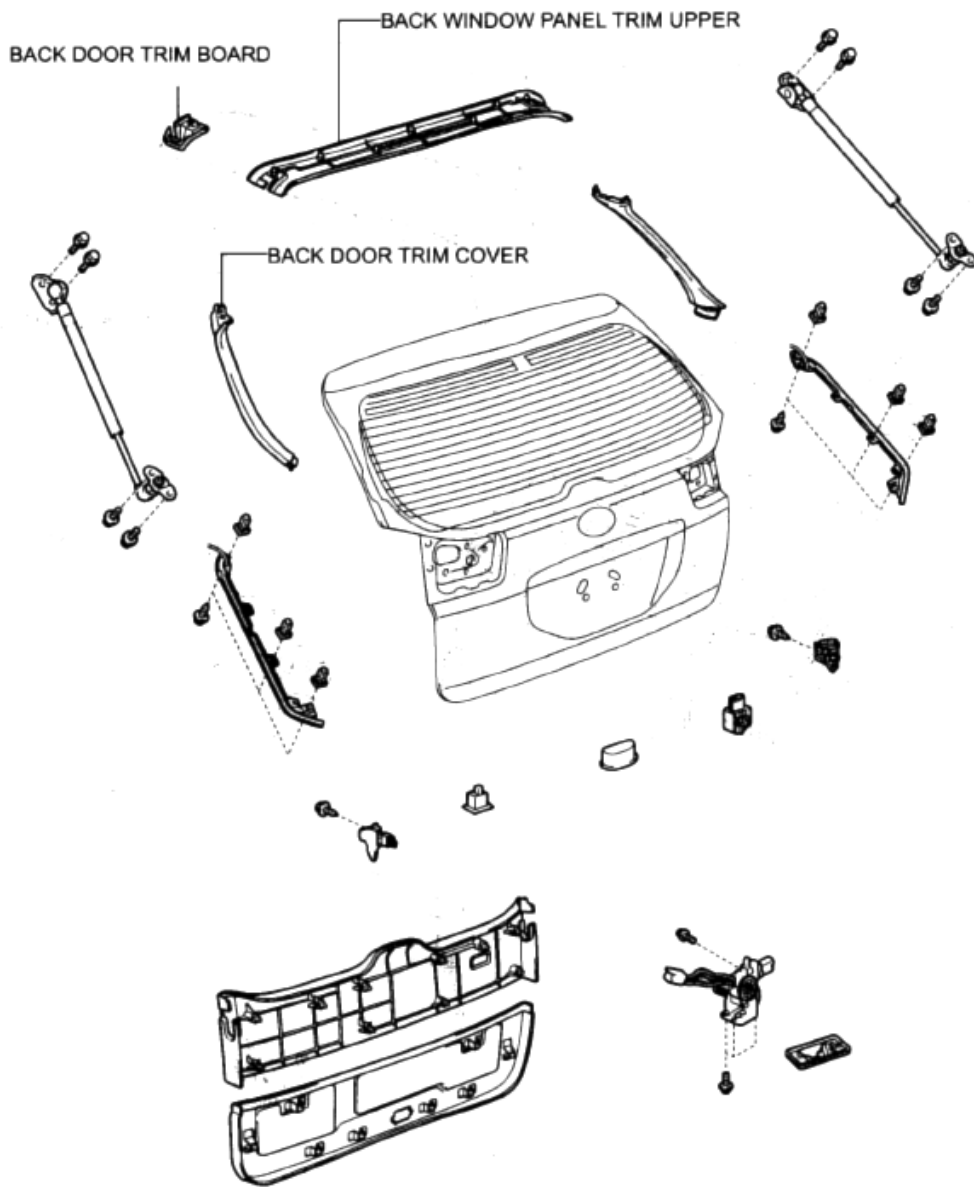
2008 ACCESSORIES & EQUIPMENT Exterior - RX 350



H

B119161E01

Fig. 11: Identifying Rear Spoiler Replacement Components (1 Of 2)
Courtesy of TOYOTA MOTOR SALES, U.S.A., INC.



H

B119162E01

Fig. 12: Identifying Rear Spoiler Replacement Components (2 Of 2)
Courtesy of TOYOTA MOTOR SALES, U.S.A., INC.

REMOVAL

1. REMOVE BACK DOOR TRIM BOARD (w/ Power Back Door)

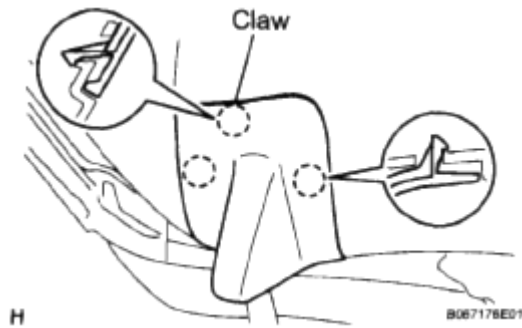


Fig. 13: Identifying Back Door Trim Board Claws
Courtesy of TOYOTA MOTOR SALES, U.S.A., INC.

- a. Using a screwdriver, disengage the 3 claws and remove the trim board.

HINT:

Tape the screwdriver tip before use.

2. REMOVE BACK WINDOW PANEL TRIM UPPER

- a. Using a screwdriver, disengage the 7 clips and remove the trim board.

HINT:

Tape the screwdriver tip before use.

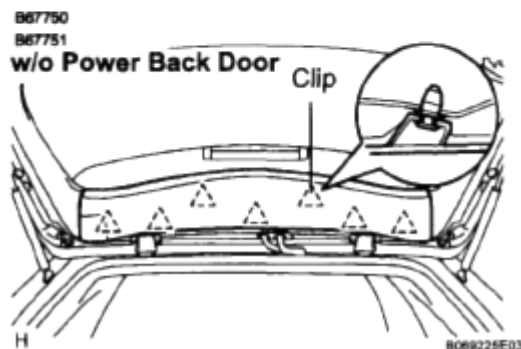
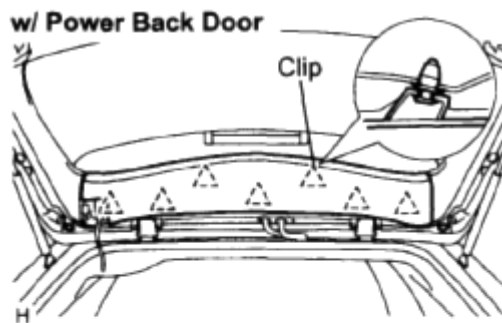


Fig. 14: Identifying Trim Board Clips

Courtesy of TOYOTA MOTOR SALES, U.S.A., INC.

3. REMOVE BACK DOOR TRIM COVER (w/ Power Back Door)

- a. Using a screwdriver, disengage the 3 clips and trim cover.

HINT:

Tape the screwdriver tip before use.

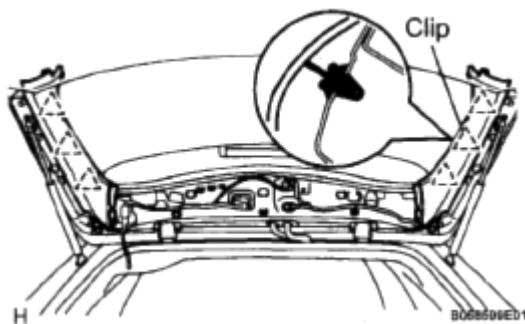
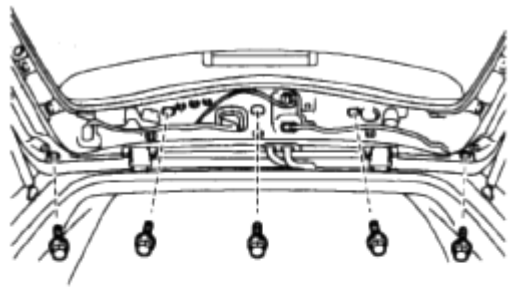


Fig. 15: Identifying Back Door Trim Cover Clips

Courtesy of TOYOTA MOTOR SALES, U.S.A., INC.

4. REMOVE REAR SPOILER SUB-ASSEMBLY

- a. Remove 5 bolts.
- b. Disconnect the stop light connector.
- c. Remove 3 clips and rear spoiler.



H

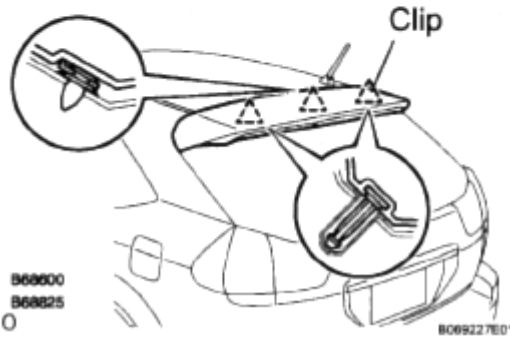


Fig. 16: Identifying Rear Spoiler Clips

Courtesy of TOYOTA MOTOR SALES, U.S.A., INC.

5. REMOVE CENTER STOP LIGHT ASSEMBLY

- a. Remove 2 screws and stop light.

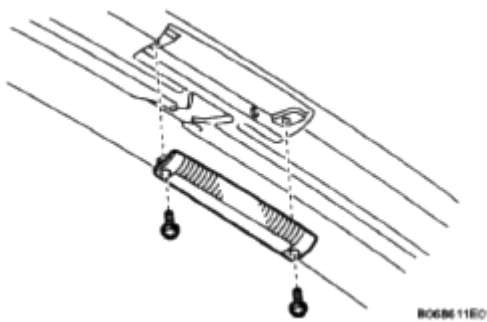


Fig. 17: Identifying Center Stop Light Screws

Courtesy of TOYOTA MOTOR SALES, U.S.A., INC.

INSTALLATION

1. INSTALL CENTER STOP LIGHT ASSEMBLY

2. INSTALL REAR SPOILER SUB-ASSEMBLY

- a. Install the rear spoiler with the 3 clips.
- b. Install the 5 bolts.

Torque: 9.8 N*m (99 kgf*cm, 87 in.*lbf)

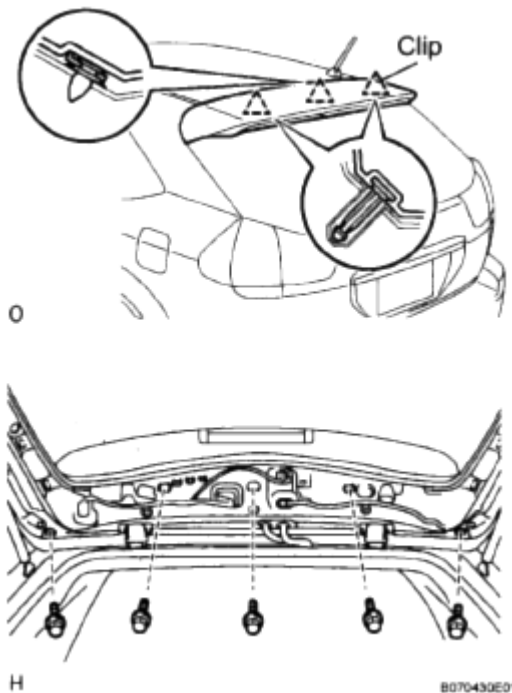


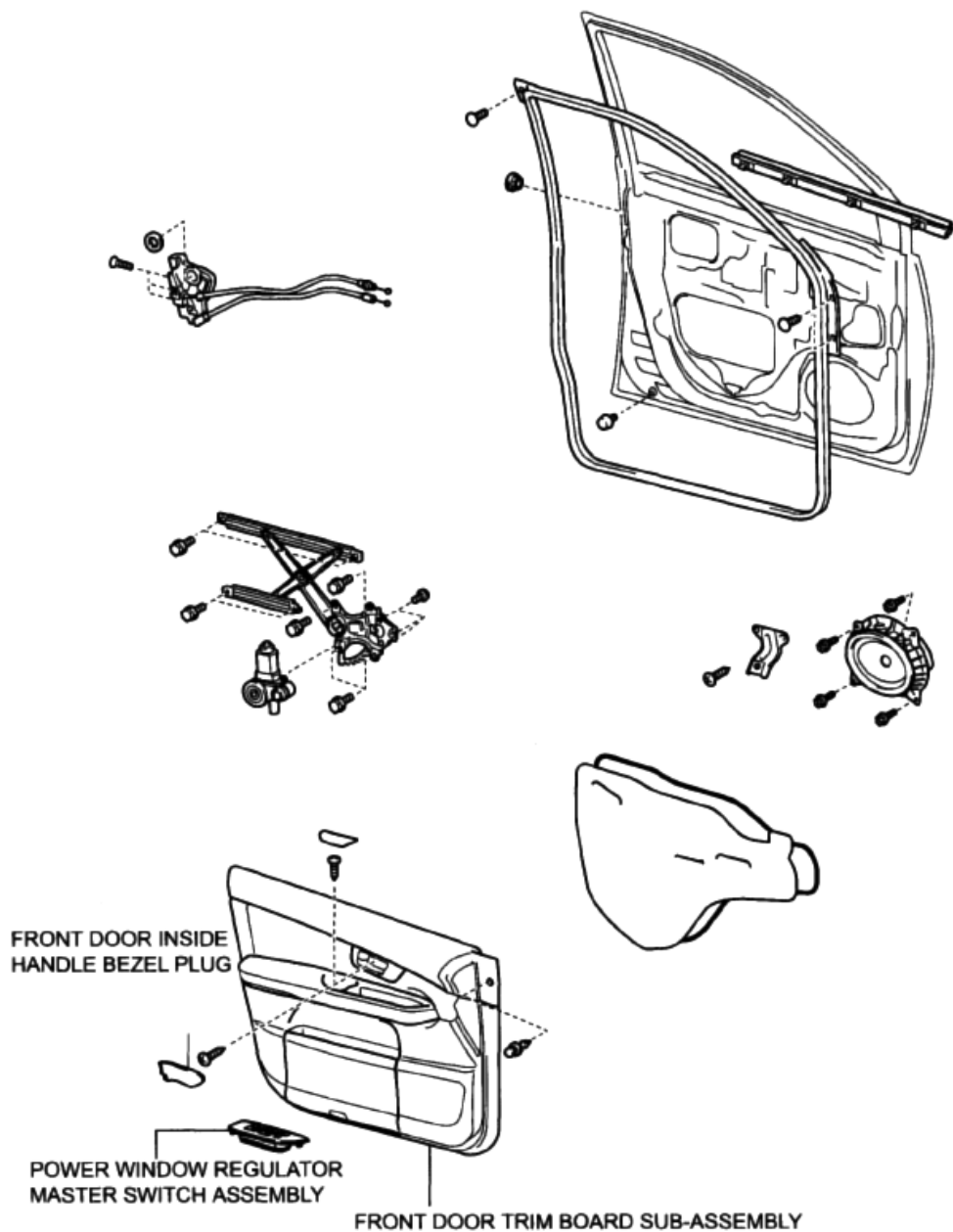
Fig. 18: Identifying Rear Spoiler Bolts

Courtesy of TOYOTA MOTOR SALES, U.S.A., INC.

- c. Connect the stop light connector.
3. **INSTALL BACK DOOR TRIM COVER (w/ Power Back Door)**
4. **INSTALL BACK WINDOW PANEL TRIM UPPER**
5. **INSTALL BACK DOOR TRIM BOARD (w/ Power Back Door)**

FRONT DOOR BELT MOLDING

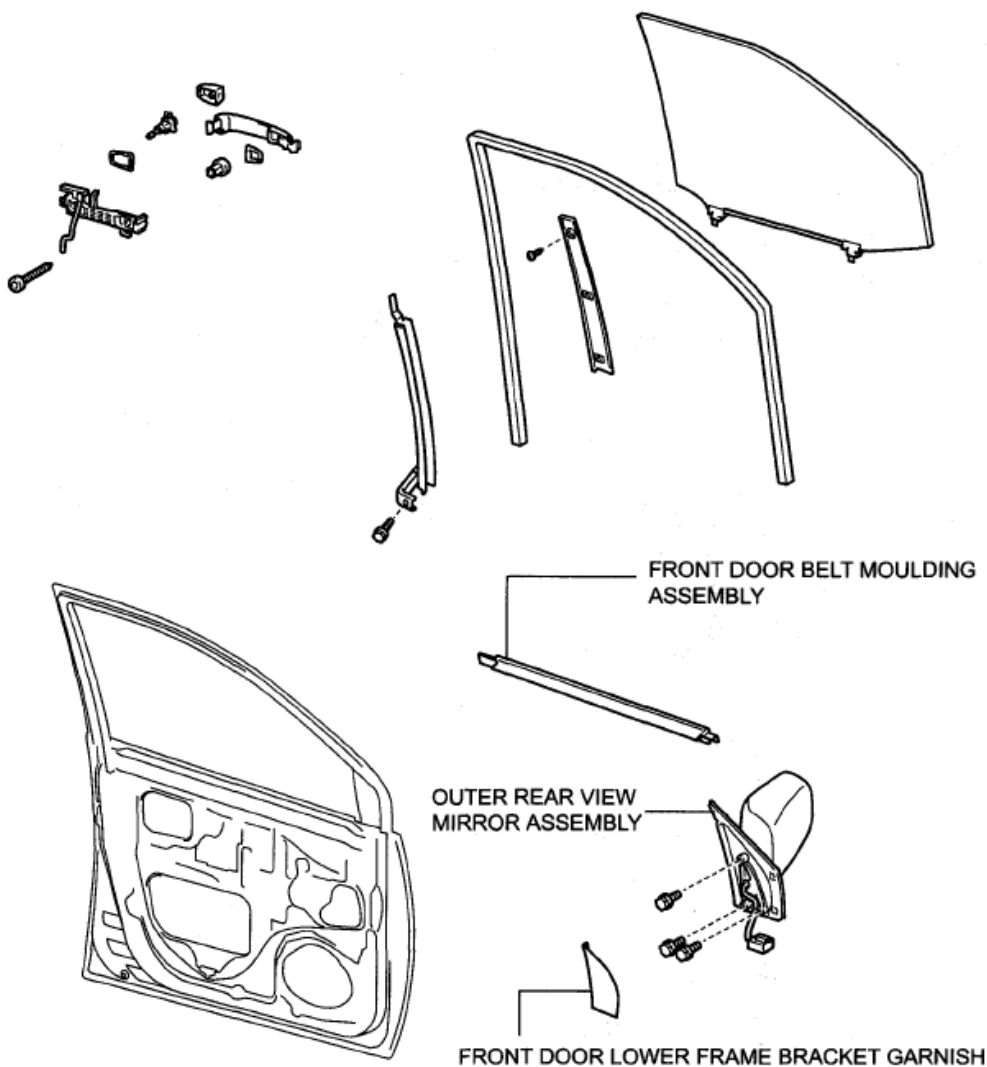
COMPONENTS



H

0110157E04

Fig. 19: Identifying Front Door Belt Molding Replacement Components (1 Of 2)
Courtesy of TOYOTA MOTOR SALES, U.S.A., INC.



H

B119174E01

Fig. 20: Identifying Front Door Belt Molding Replacement Components (2 Of 2)
 Courtesy of TOYOTA MOTOR SALES, U.S.A., INC.

REMOVAL

1. **REMOVE POWER WINDOW REGULATOR MASTER SWITCH ASSEMBLY** (See **DISASSEMBLY**)
2. **REMOVE FRONT DOOR LOWER FRAME BRACKET GARNISH** (See **DISASSEMBLY**)
3. **REMOVE FRONT DOOR INSIDE HANDLE BEZEL PLUG** (See **DISASSEMBLY**)
4. **REMOVE FRONT DOOR TRIM BOARD SUB-ASSEMBLY** (See **DISASSEMBLY**)
5. **REMOVE OUTER REAR VIEW MIRROR ASSEMBLY** (See **REMOVAL**)

6. REMOVE FRONT DOOR BELT MOLDING ASSEMBLY

- a. Put protective tape under the molding.
- b. Using a molding remover, disengage the claws and remove the front door belt molding assembly.

HINT:

Tape the remover tip before use.

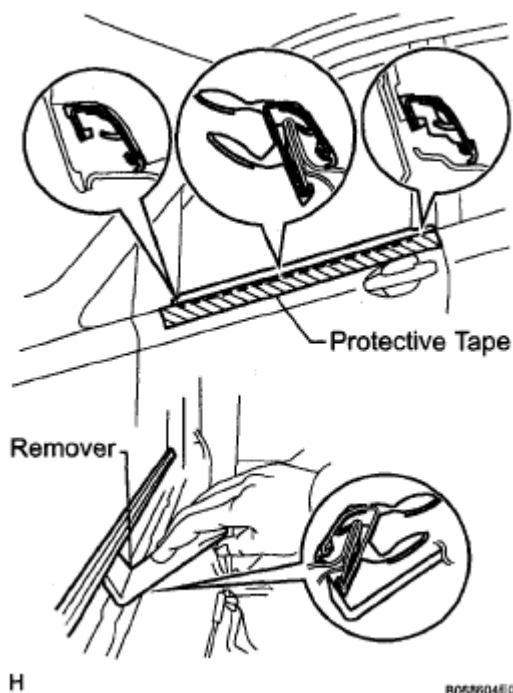


Fig. 21: Identifying Front Door Belt Molding Assembly
 Courtesy of TOYOTA MOTOR SALES, U.S.A., INC.

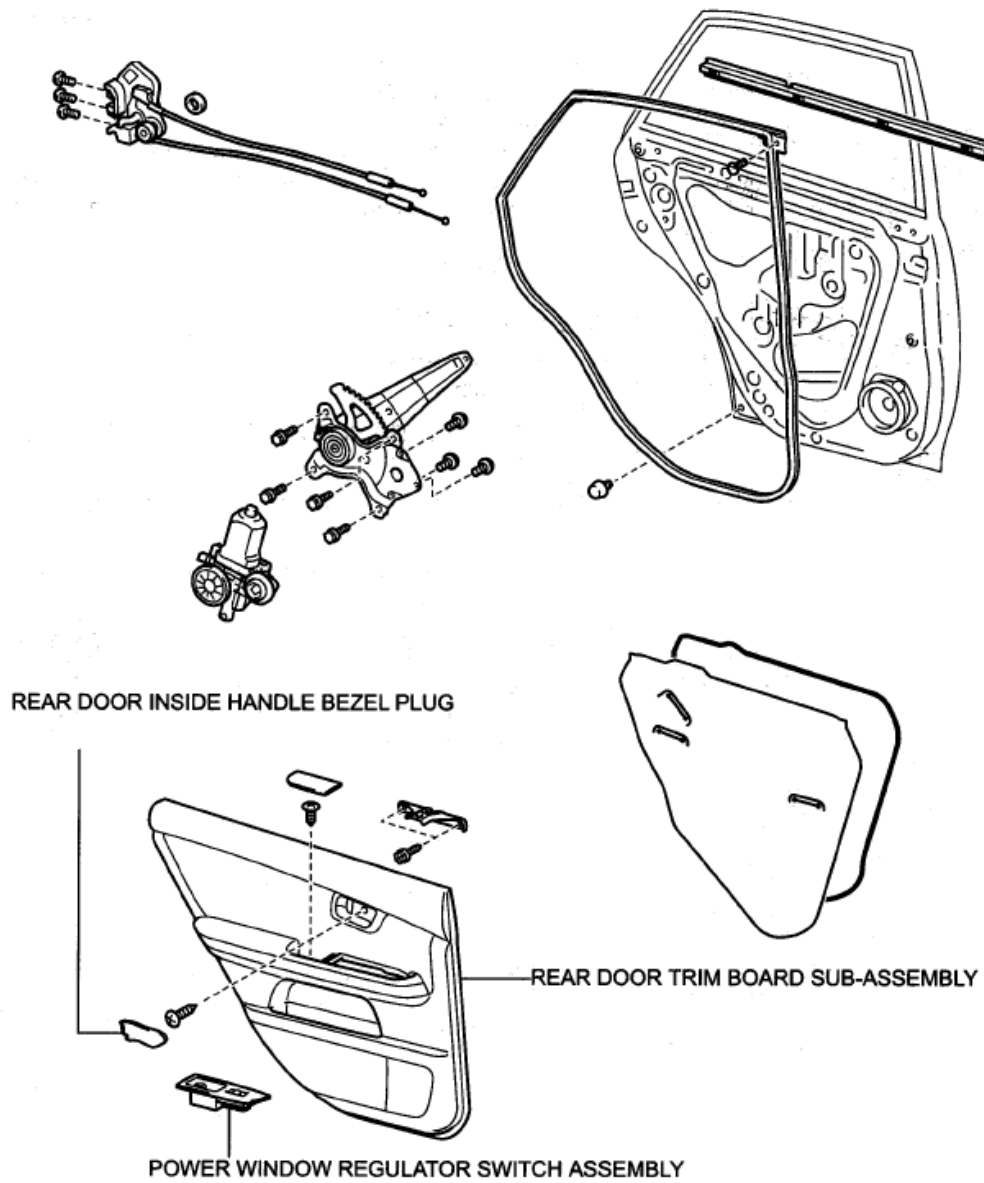
INSTALLATION

1. **INSTALL FRONT DOOR BELT MOLDING ASSEMBLY**
2. **INSTALL OUTER REAR VIEW MIRROR ASSEMBLY** (See **INSTALLATION**)
3. **INSTALL FRONT DOOR TRIM BOARD SUB-ASSEMBLY LH**
4. **INSTALL FRONT DOOR INSIDE HANDLE BEZEL PLUG**
5. **INSTALL FRONT DOOR LOWER FRAME BRACKET GARNISH**
6. **REMOVE POWER WINDOW REGULATOR MASTER SWITCH ASSEMBLY**

REAR DOOR BELT MOLDING**COMPONENTS**

2008 Lexus RX 350

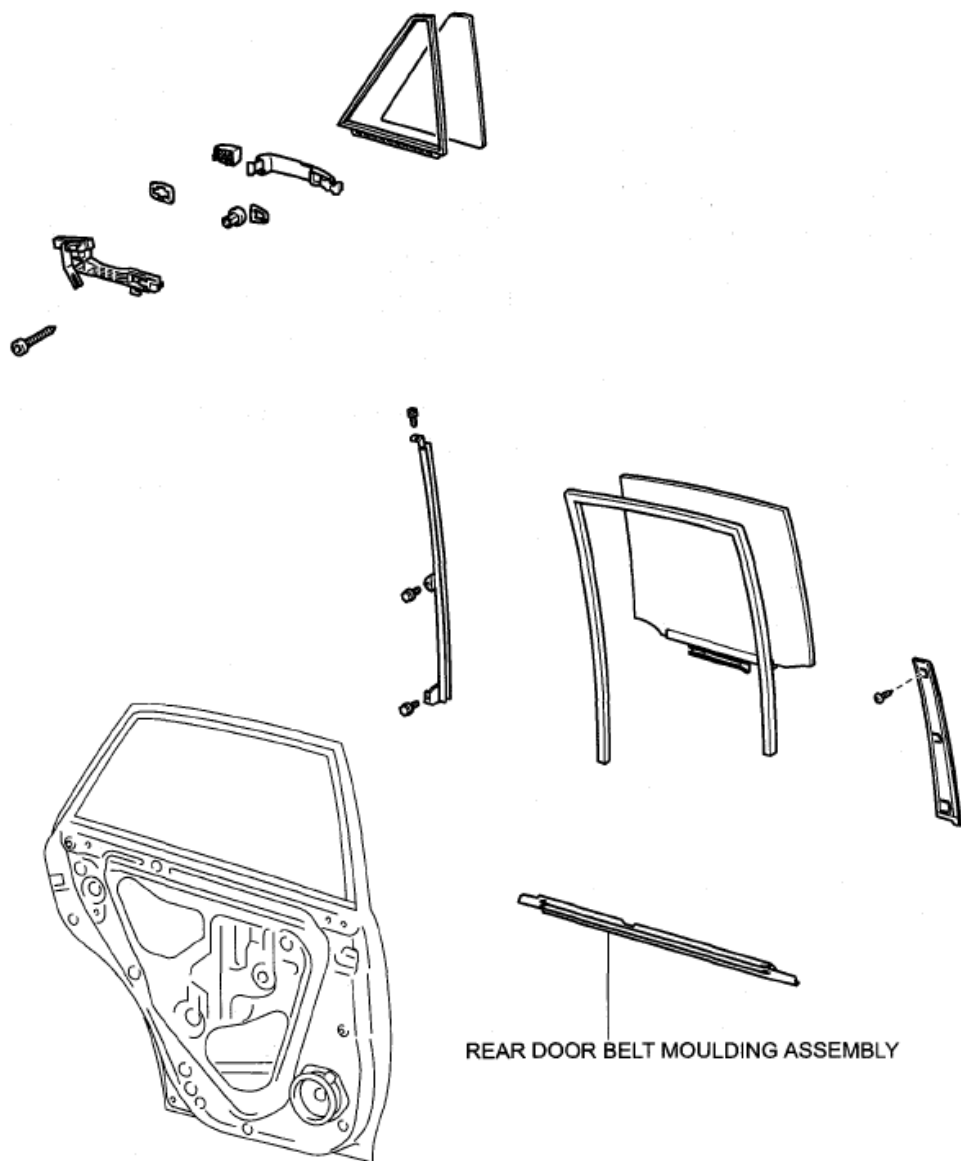
2008 ACCESSORIES & EQUIPMENT Exterior - RX 350



H

8119158E02

Fig. 22: Identifying Rear Door Belt Molding Replacement Components (1 Of 2)
Courtesy of TOYOTA MOTOR SALES, U.S.A., INC.



REAR DOOR BELT MOULDING ASSEMBLY

H

0160175E01

Fig. 23: Identifying Rear Door Belt Molding Replacement Components (2 Of 2)
 Courtesy of TOYOTA MOTOR SALES, U.S.A., INC.

REMOVAL

1. REMOVE POWER WINDOW REGULATOR SWITCH ASSEMBLY (See DISASSEMBLY)
2. REMOVE REAR DOOR INSIDE HANDLE BEZEL PLUG (See DISASSEMBLY)
3. REMOVE REAR DOOR TRIM BOARD SUB-ASSEMBLY (See DISASSEMBLY)
4. REMOVE REAR DOOR BELT MOLDING ASSEMBLY
 - a. Put protective tape under the molding.

- b. Using a molding remover, disengage the claws and remove the rear door belt molding assembly LH.

HINT:

Tape the remover tip before use.

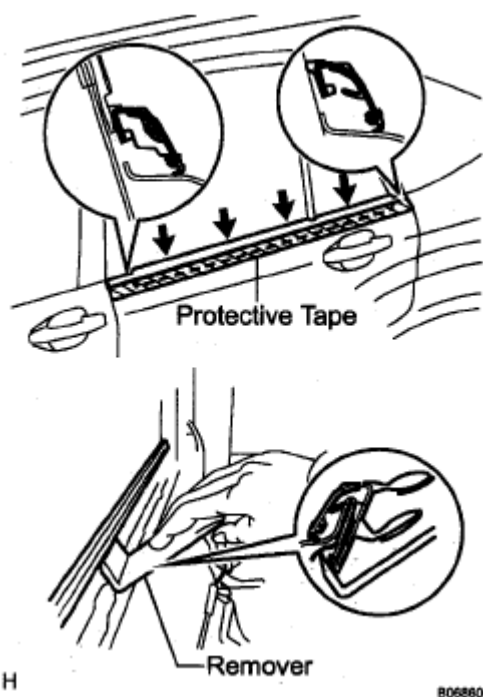


Fig. 24: Identifying Rear Door Belt Molding Assembly
Courtesy of TOYOTA MOTOR SALES, U.S.A., INC.

INSTALLATION

1. INSTALL REAR DOOR BELT MOLDING ASSEMBLY
2. INSTALL REAR DOOR TRIM BOARD SUB-ASSEMBLY
3. INSTALL LOWER WINDOW REGULATOR SWITCH ASSEMBLY
4. INSTALL REAR DOOR INSIDE HANDLE BEZEL PLUG

FRONT PILLAR UPPER COVER

COMPONENTS

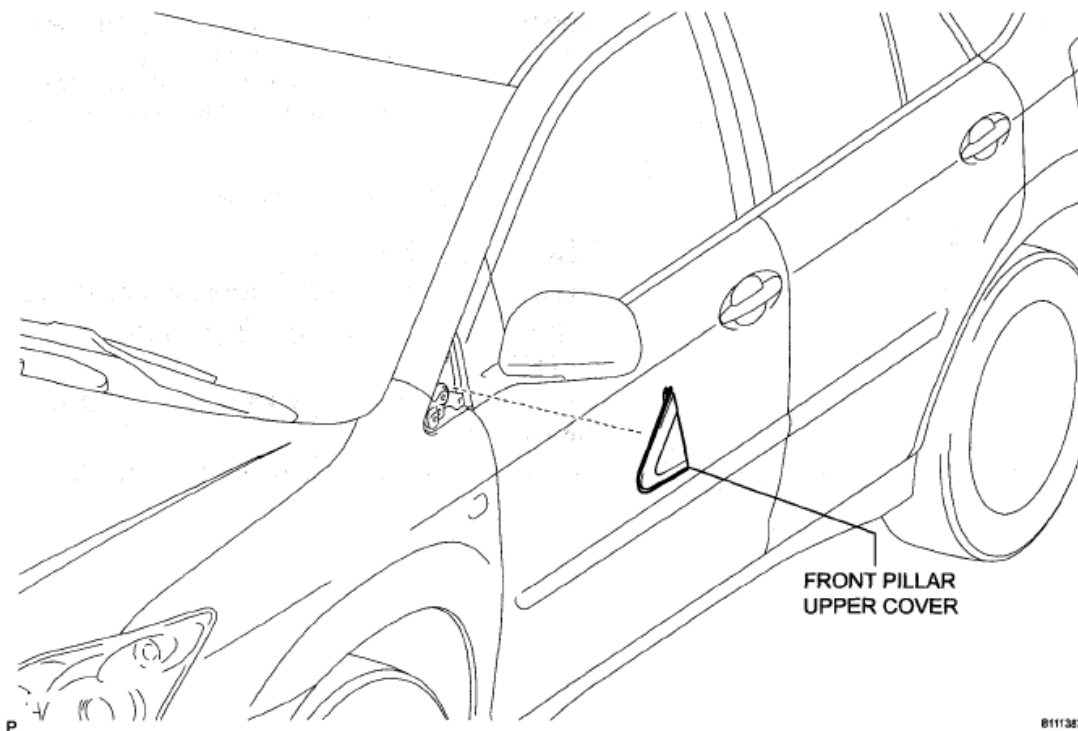


Fig. 25: Identifying Front Pillar Upper Cover Replacement Components
Courtesy of TOYOTA MOTOR SALES, U.S.A., INC.

REMOVAL

1. REMOVE FRONT PILLAR UPPER COVER

- a. Using a screwdriver, disengage the 2 clips and remove the front pillar upper cover.

HINT:

Tape the screwdriver tip before use.

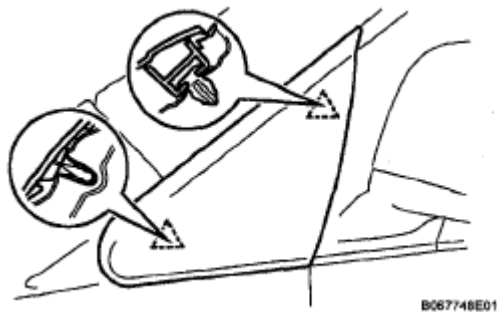


Fig. 26: Identifying Front Pillar Upper Cover Clips
Courtesy of TOYOTA MOTOR SALES, U.S.A., INC.

INSTALLATION

1. INSTALL FRONT PILLAR UPPER COVER

ROOF DRIP SIDE FINISH MOLDING (W/ SLIDING ROOF)

COMPONENTS

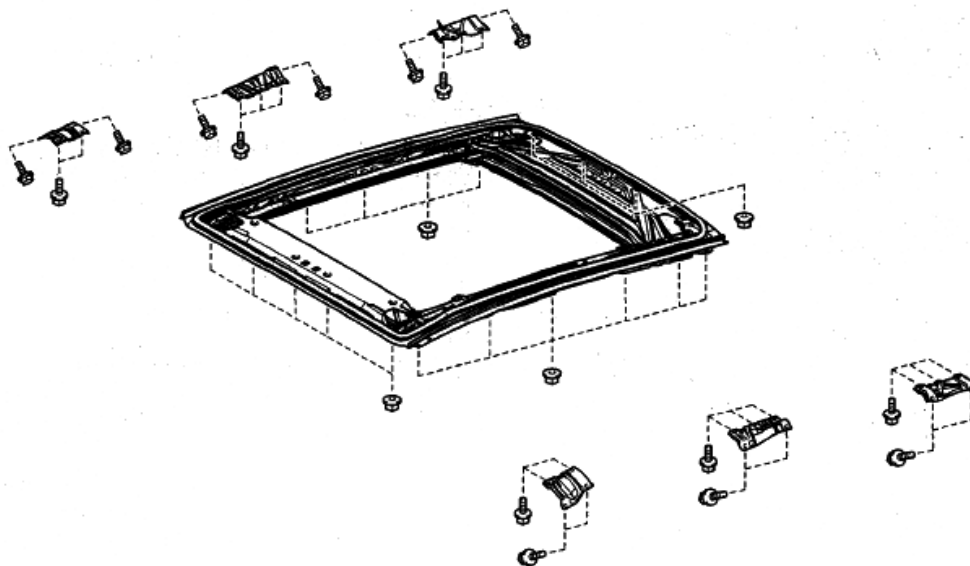
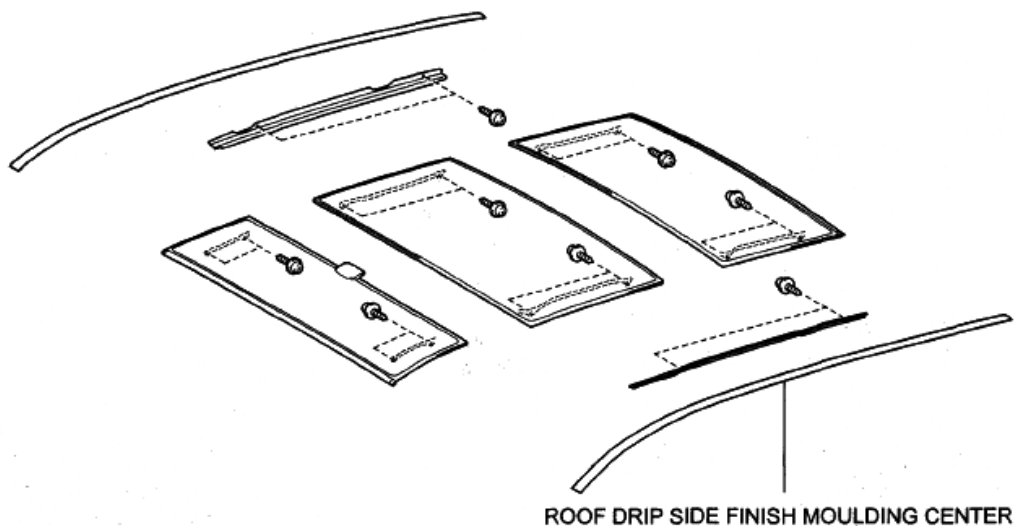


Fig. 27: Identifying Roof Drip Side Finish Molding Replacement Components
Courtesy of TOYOTA MOTOR SALES, U.S.A., INC.

REMOVAL

1. REMOVE ROOF DRIP SIDE FINISH MOLDING CENTER

- Tape the circumference of the molding for protection.
- Using a remover for the roof molding, release the engagements of the clips both in the front and rear end of the molding and then remove the roof drip side finish molding.

NOTE:

- Do not remove the clips.
- In case that the clips are damaged or removed accidentally, exchange them for supplied clips.

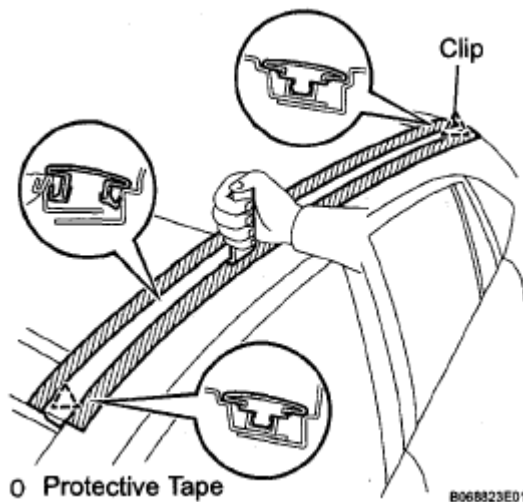


Fig. 28: Identifying Roof Drip Side Finish Molding Center
Courtesy of TOYOTA MOTOR SALES, U.S.A., INC.

INSTALLATION

1. REMOVE ROOF DRIP SIDE FINISH MOLDING CENTER

NOTE: Only when exchanging clips.

- Remove the tape that remains on the mounting surface of the body and then clean the surface with white gasoline.
- Using a heat light, heat up the clip installation surfaces of the body and molding.

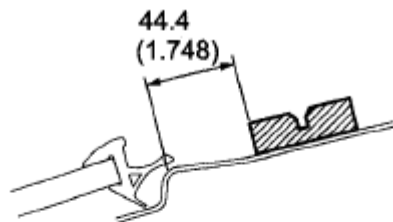
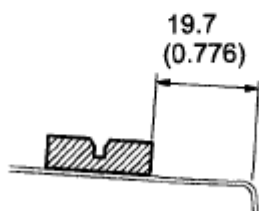
Heating temperature

HEATING TEMPERATURE SPECIFICATION

Body	Molding
40 - 60°C (104 - 140°F)	20 - 30°C (68 - 86°F)

NOTE: Do not heat the molding and body excessively.

- c. Set the supplied clips in the positions shown below and press-fit those clips by hand to install them.

Front Side**Rear Side**

mm (in.)

0

B050678E03

Fig. 29: Identifying Clips Installation Positions

Courtesy of TOYOTA MOTOR SALES, U.S.A., INC.

NOTE: The installation of the molding should be carried out when 30 minutes or more have passed after press-fitting the clips.

HINT:

- Initial hardening time: 30 minutes
- Required time for complete hardening time: 24 hours

ROOF DRIP SIDE FINISH MOLDING (W/O SLIDING ROOF)

COMPONENTS

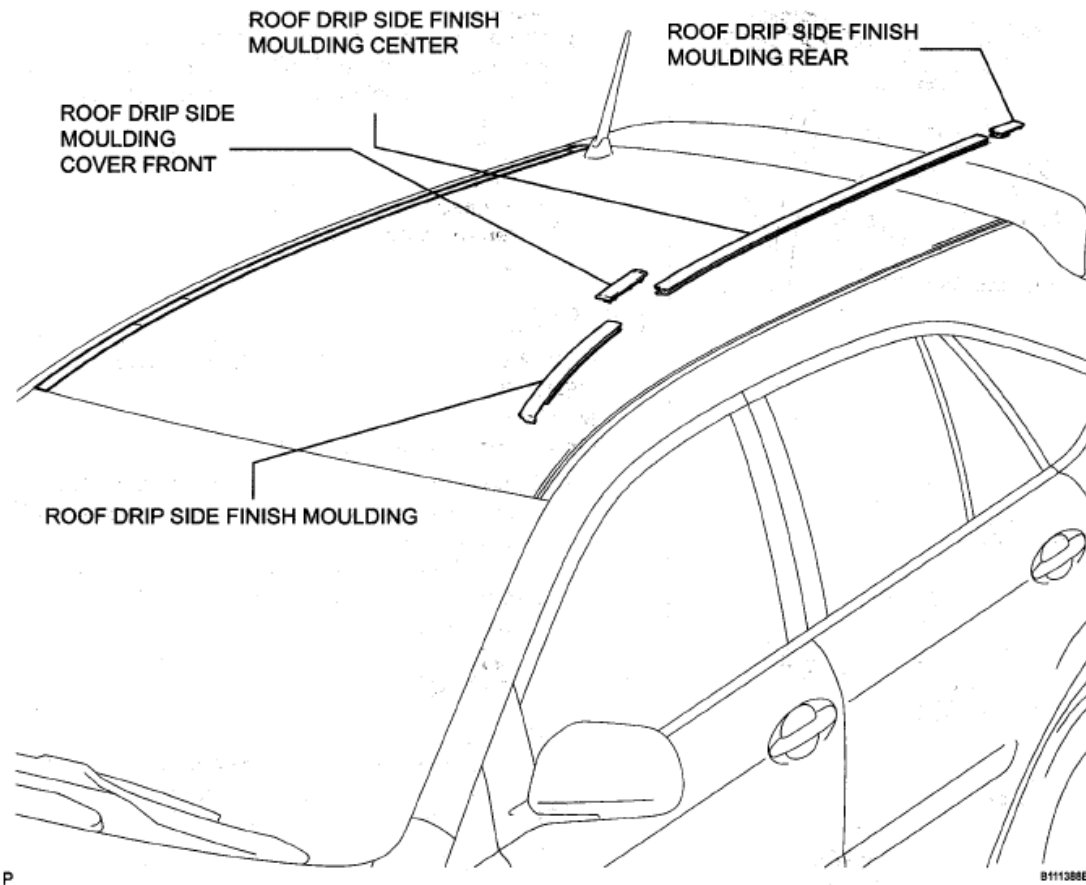


Fig. 30: Identifying Roof Drip Side Finish Molding Replacement Components (W/O Sliding Roof)
Courtesy of TOYOTA MOTOR SALES, U.S.A., INC.

REMOVAL

1. REMOVE ROOF DRIP SIDE MOULDING COVER FRONT

- a. Using a remover for the molding cover, disengage the clip and claw, and remove the molding cover.

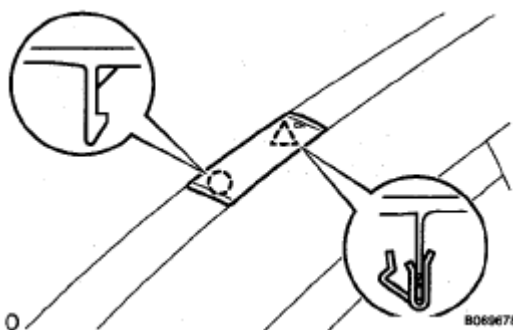


Fig. 31: Identifying Front Roof Drip Side Molding Cover Clip & Claw
Courtesy of TOYOTA MOTOR SALES, U.S.A., INC.

2. REMOVE ROOF DRIP SIDE FINISH MOLDING

- a. Tape the circumference of the molding for protection.
- b. Using a remover for the roof molding, release the engagements of the clips and remove the molding.

NOTE:

- Do not remove the clips.
- In case that the clips are damaged or removed accidentally, replace them with new ones.

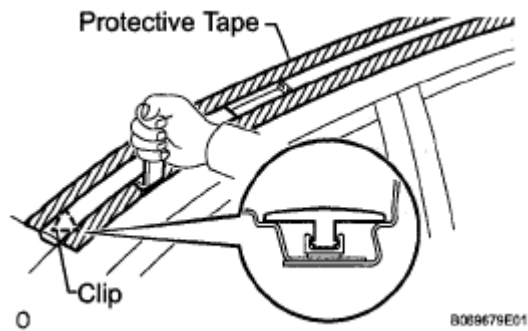


Fig. 32: Identifying Roof Drip Side Finish Molding
Courtesy of TOYOTA MOTOR SALES, U.S.A., INC.

3. REMOVE ROOF DRIP SIDE FINISH MOLDING CENTER

- a. Tape the circumference of the molding for protection.
- b. Using a remover for the roof molding, release the engagements of the clips and remove the molding.

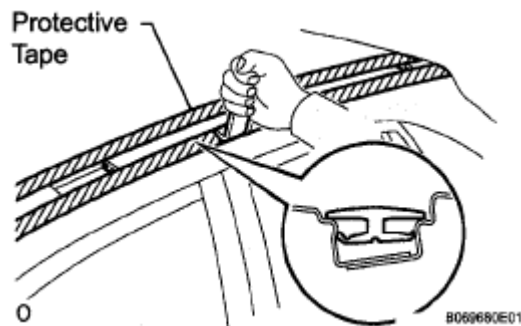


Fig. 33: Identifying Roof Drip Side Finish Molding Center
Courtesy of TOYOTA MOTOR SALES, U.S.A., INC.

4. REMOVE ROOF DRIP SIDE FINISH MOLDING REAR

- a. Tape the circumference of the molding for protection.
- b. Using a remover for the roof molding, release the engagements of the clips and remove the molding.

NOTE:

- Do not remove the clips,
- In case that the clips are damages or removed accidentally, replace them with new ones.

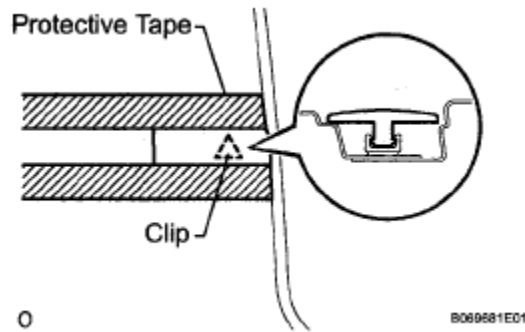


Fig. 34: Identifying Rear Roof Drip Side Finish Molding Clip
 Courtesy of TOYOTA MOTOR SALES, U.S.A., INC.

INSTALLATION**1. INSTALL ROOF DRIP SIDE FINISH MOLDING CLIP NO.1**

NOTE: Only when replacing the clips.

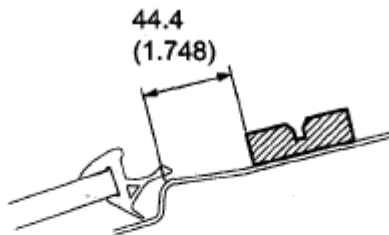
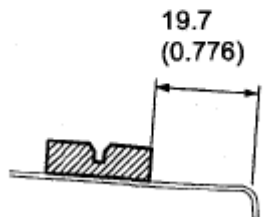
- Remove the tape that remains on the mounting surface of the body and then clean the surface with white gasoline.
- Using a heat light, heat up the clip installation surfaces of the body and molding.

Heating temperature**HEATING TEMPERATURE SPECIFICATION TABLE**

Body	Molding
40 - 60°C (104 - 140°F)	20 - 30°C (68 - 86°F)

NOTE: Do not heat them excessively.

- Set the new clips into the positions shown below, and press-fit those clips by hands to install them.

Front Side**Rear Side**

0

mm (in.)

B050678E01

Fig. 35: Identifying Clips Installation Positions

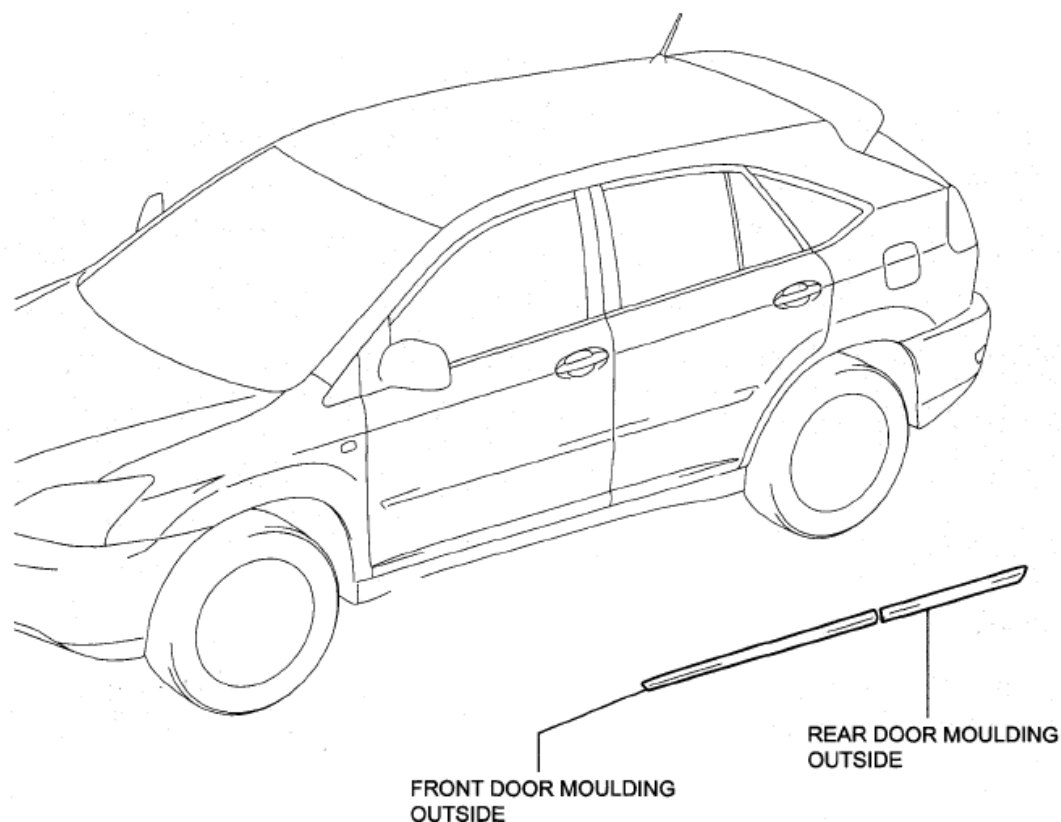
Courtesy of TOYOTA MOTOR SALES, U.S.A., INC.

- d. The installation of the molding should be carried out when 30 minutes or more have passed after press-fitting the clips.

HINT:

- Initial hardening time is 30 minutes
 - Hardening completes after 24 hours
2. **INSTALL ROOF DRIP SIDE FINISH MOLDING REAR**
 3. **INSTALL ROOF DRIP SIDE FINISH MOLDING CENTER**
 4. **INSTALL ROOF DRIP SIDE FINISH MOLDING**
 5. **INSTALL ROOF DRIP SIDE MOLDING COVER FRONT**

OUTSIDE MOLDING**COMPONENTS**



P

B112789E03

Fig. 36: Identifying Outside Molding Replacement Components
Courtesy of TOYOTA MOTOR SALES, U.S.A., INC.

REMOVAL

1. REMOVE OUTSIDE MOLDING

- a. Using a heat light, heat the molding.

Heating temperature:

40-60°C (104-140°F)

NOTE: Do not heat the molding excessively.

- b. Tie both the piano wire ends to wooden blocks or equivalents.
- c. Scrape tape off by pulling the piano wire and remove the molding with reference pins remaining on the molding.

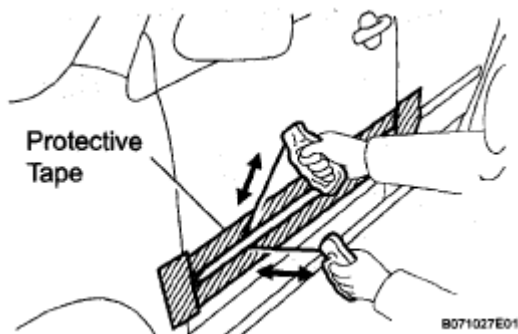


Fig. 37: Removing Molding Using Piano Wire
Courtesy of TOYOTA MOTOR SALES, U.S.A., INC.

- NOTE:**
- If reusing the molding, take care not to damage the molding.
 - Do not damage the body.

d. Remove the molding.

INSTALLATION

1. INSTALL OUTSIDE MOLDING

a. Using a heat light, heat the molding surface.

Heating temperature:

40-60°C (104-140°F)

NOTE: Do not heat the body excessively.

b. Remove the tape from the body.

c. Wipe off the stains with cleaner.

d. If reusing molding:

Clean the molding.

1. Using a heat light, heat the molding.

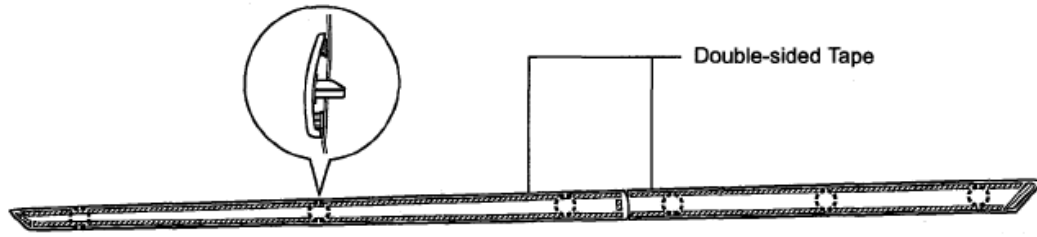
Heating temperature:

20 - 30°C (68 - 86°F)

NOTE: Do not heat the molding excessively.

2. Remove the tape from the molding.

3. Wipe off the stains with cleaner.
4. Apply new double-sided tape to the molding as shown below



T

8068502E01

Fig. 38: Identifying Double-Sided Tape Applying Area Of Outside Molding
 Courtesy of TOYOTA MOTOR SALES, U.S.A., INC.

- e. Match the reference pins on the molding with the reference holes on the body.
- f. Using a heat light, heat the body and molding.

Heat temperature

HEATING TEMPERATURE SPECIFICATION

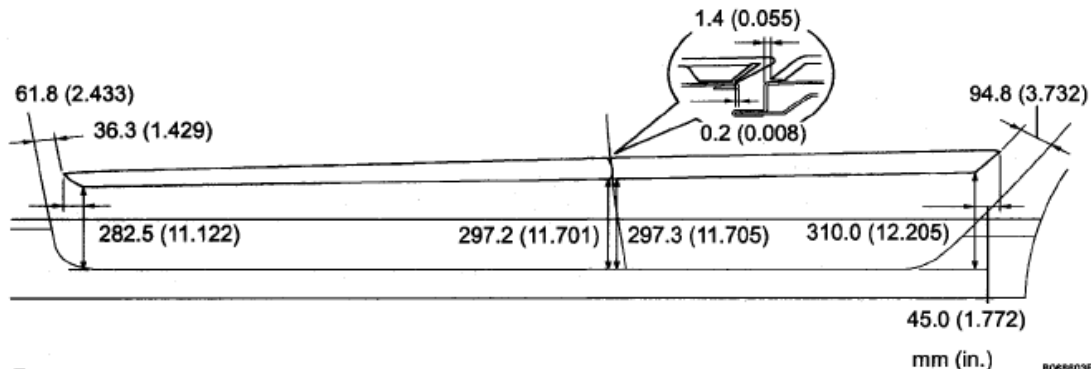
Body	Molding
40 - 60°C (104 - 140°F)	20 - 30°C (68 - 86°F)

NOTE: Do not heat the body and molding excessively.

- g. Remove the release paper from the molding face.

NOTE: When the release paper is removed, take care that dirt or dust do not stick to the adhesive area.

- h. Attach the molding securely to the body.



T

8068603E01

Fig. 39: Identifying Outside Molding Dimension

Courtesy of TOYOTA MOTOR SALES, U.S.A., INC.

NOTE: Do not apply excessive force onto the molding, but apply steady pressure with your thumbs.

ROCKER PANEL MOLDING

COMPONENTS

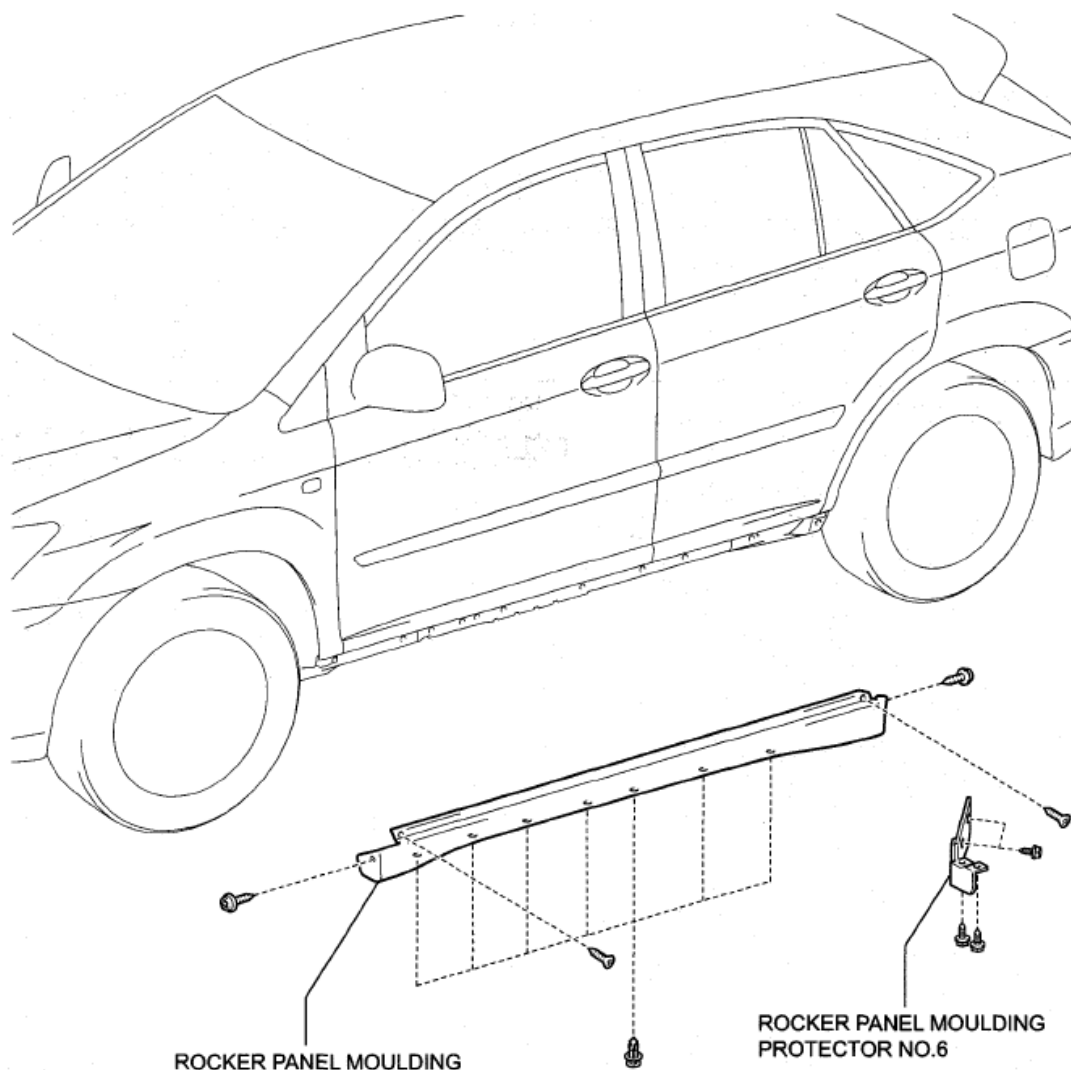


Fig. 40: Identifying Rocker Panel Molding Replacement Components
Courtesy of TOYOTA MOTOR SALES, U.S.A., INC.

REMOVAL

1. **REMOVE ROCKER PANEL MOLDING PROTECTOR NO. 6**
 - a. Remove the 4 screws and rocker panel molding protector.

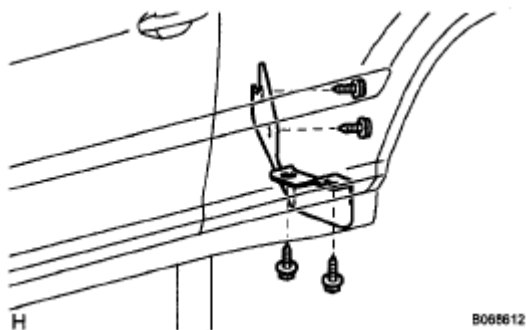


Fig. 41: Identifying Rocker Panel Molding Protector Screws
 Courtesy of TOYOTA MOTOR SALES, U.S.A., INC.

2. **REMOVE ROCKER PANEL MOLDING**
 - a. Using a screwdriver, remove the 7 clips.

HINT:

Tape the screwdriver tip before use.

- b. Remove the 2 screws.
- c. Using a hexagon wrench, remove the 2 screws.
- d. Disengage the 2 clips and remove the rocker panel molding.

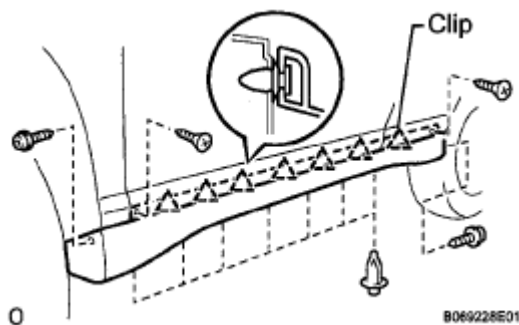


Fig. 42: Identifying Rocker Panel Molding Clips & Screws
 Courtesy of TOYOTA MOTOR SALES, U.S.A., INC.

INSTALLATION

1. **INSTALL ROCKER PANEL MOLDING**

2. INSTALL ROCKER PANEL MOLDING PROTECTOR NO.6

FRONT DOOR WINDOW FRAME MOLDING

COMPONENTS

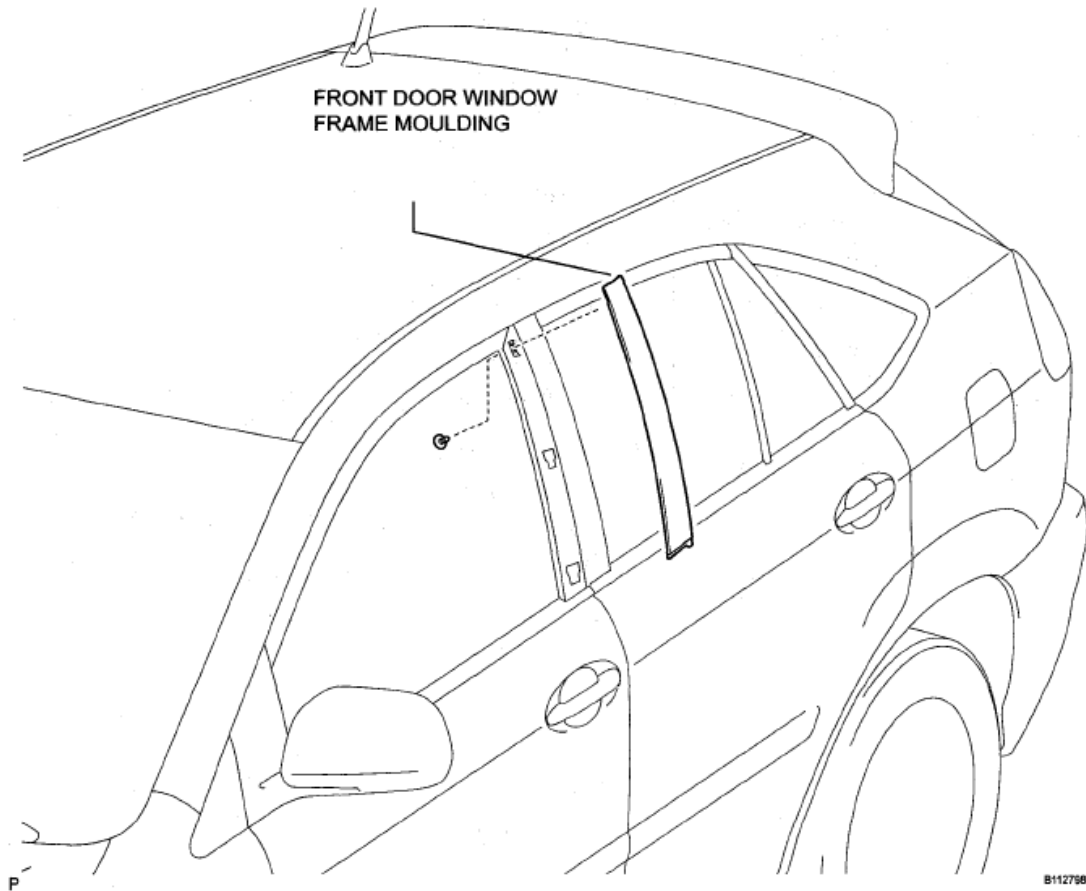


Fig. 43: Identifying Front Door Window Frame Molding Replacement Components
Courtesy of TOYOTA MOTOR SALES, U.S.A., INC.

REMOVAL

1. REMOVE FRONT DOOR WINDOW FRAME MOLDING

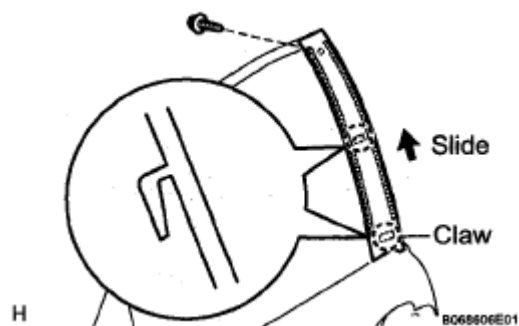


Fig. 44: Identifying Front Door Window Frame Molding
Courtesy of TOYOTA MOTOR SALES, U.S.A., INC.

- a. Remove the screw.
- b. Using a heat light, heat the molding.

Heating temperature:

40-60°C (104-140°F)

NOTE: Do not heat the molding excessively.

- c. Slide the molding upward to remove the it.

NOTE: If reusing the molding, take care not to damage the molding.

INSTALLATION

1. INSTALL FRONT DOOR WINDOW FRAME MOLDING

- a. Remove the tape from the molding.
- b. Clean the contact surface of the body with white gasoline.
- c. Clean the outer circumference of the molding with white gasoline.
- d. Apply new double-sided tape to the molding.

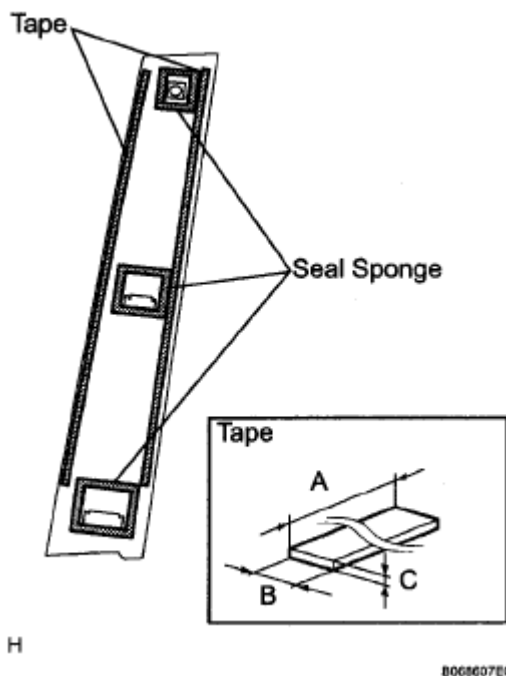


Fig. 45: Identifying Double-Sided Tape Applying Area Of Front Door Window Frame Molding

Courtesy of TOYOTA MOTOR SALES, U.S.A., INC.

Dimension

FRONT DOOR WINDOW FRAME MOLDING DIMENSION SPECIFICATION

A	B	C
400.0 mm (15.748 in.)	5.0 mm (0.197 in.)	1.2 mm (0.047 in.)

- e. Using a heat light, heat the body and molding.

Heating temperature

HEATING TEMPERATURE SPECIFICATION

Body	Molding
40 - 60°C (104 - 140°F)	20 - 30°C (68 - 86°F)

NOTE: Do not heat the body and molding excessively.

- f. Remove the release paper from the molding face.

HINT:

Be careful that dirt or foreign objects do not stick to the adhesive part when removing the release paper.

- g. Engage the 2 claws and install the molding with the screw.

NOTE: Do not apply excessive force onto the molding, but apply steady pressure with your thumbs.

REAR DOOR WINDOW FRAME MOLDING

COMPONENTS

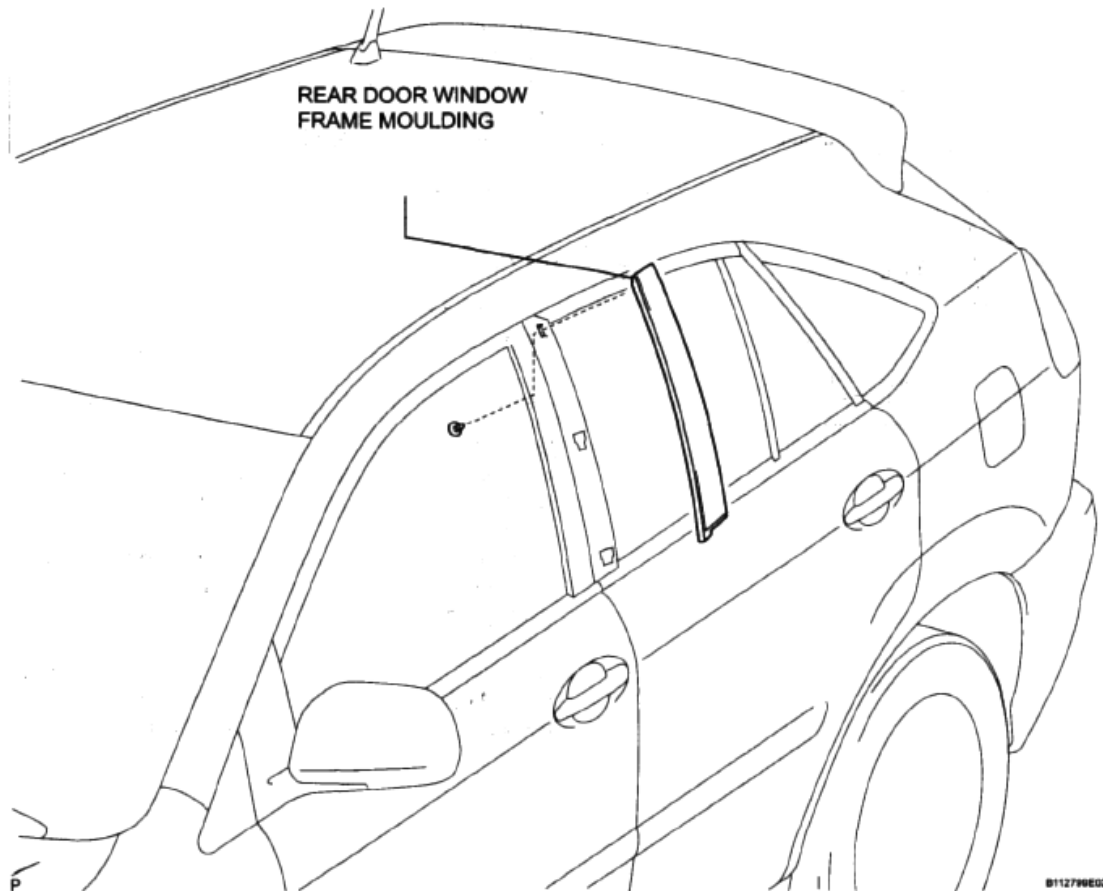


Fig. 46: Identifying Rear Door Window Frame Molding Replacement Components
Courtesy of TOYOTA MOTOR SALES, U.S.A., INC.

REMOVAL

1. REMOVE REAR DOOR WINDOW FRAME MOLDING

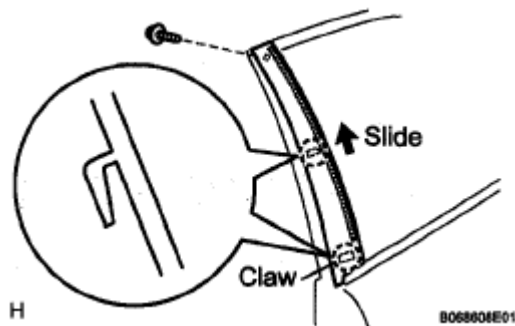


Fig. 47: Identifying Rear Door Window Frame Molding
Courtesy of TOYOTA MOTOR SALES, U.S.A., INC.

- a. Remove the screw.
- b. Using a heat light, heat the molding.

Heating temperature:

40 - 60°C (104 - 140°F)

NOTE: Do not heat the molding excessively.

- c. Slide the molding upward to remove it.

NOTE: If reusing the molding, take care not to damage the molding.

INSTALLATION

1. INSTALL REAR DOOR WINDOW FRAME MOLDING

- a. Remove the tape from the molding.
- b. Clean the contact surface of the body with white gasoline.
- c. Clean the outer circumference of the molding with white gasoline.

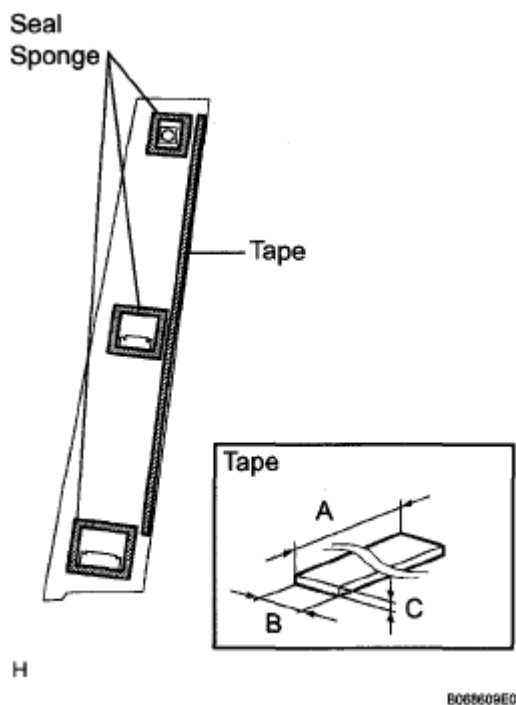


Fig. 48: Identifying Double-Sided Tape Applying Area Of Rear Door Window Frame Molding

Courtesy of TOYOTA MOTOR SALES, U.S.A., INC.

- d. Apply new double-sided tape to the molding.

Dimension

REAR DOOR WINDOW FRAME MOLDING DIMENSION SPECIFICATION

A	B	C
400.0 mm (15.748 in.)	5.0 mm (0.197 in.)	1.2 mm (0.047 in.)

- e. Using a heat light, heat the body and molding.

Heating temperature

HEATING TEMPERATURE SPECIFICATION TABLE

Body	Molding
40 - 60°C (104 - 140°F)	20 - 30°C (68 - 86°F)

NOTE: Do not heat the body and molding excessively.

- f. Remove the release paper from the molding face.

HINT:

2008 Lexus RX 350

2008 ACCESSORIES & EQUIPMENT Exterior - RX 350

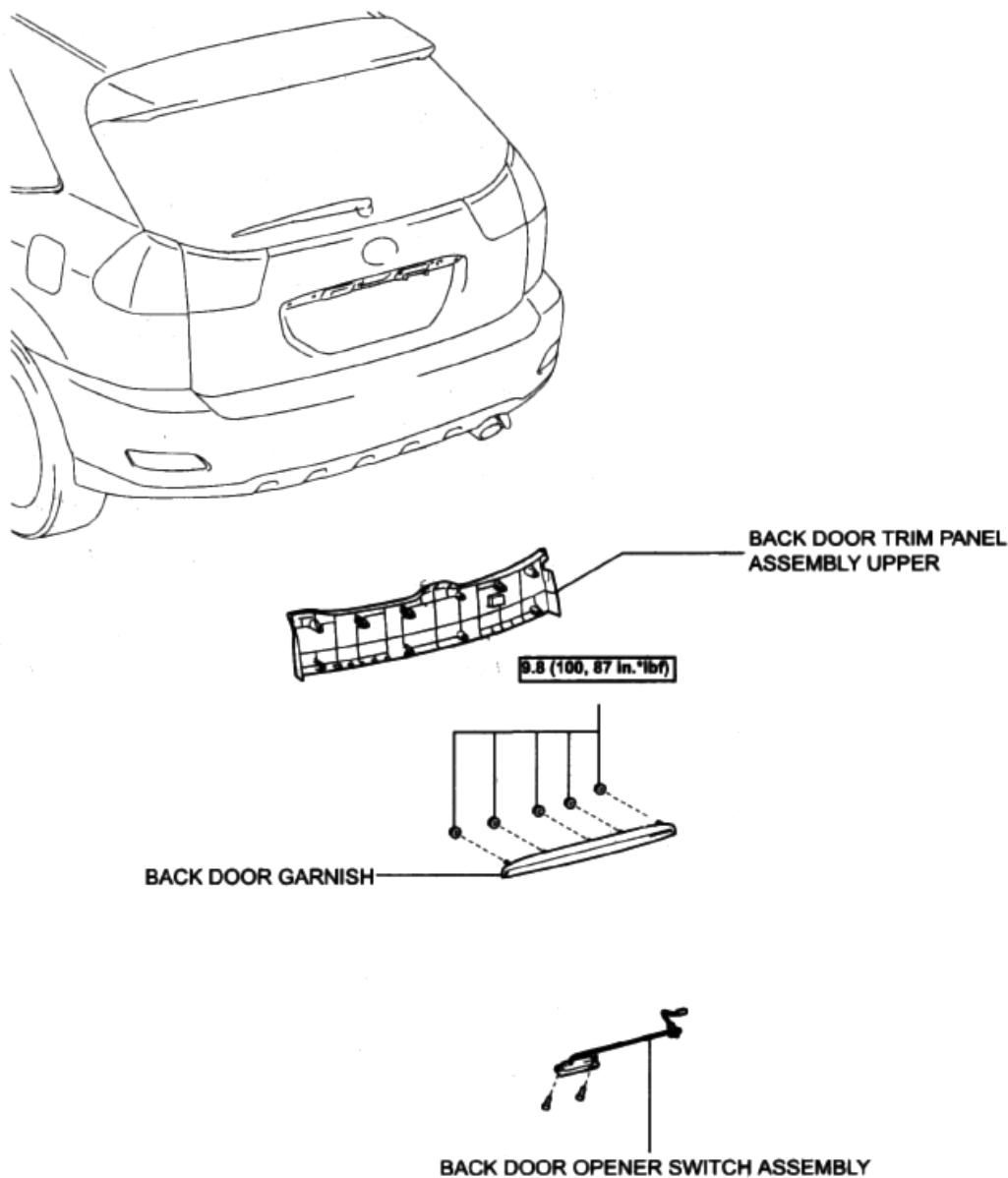
Be careful that dirt or foreign objects do not stick to the adhesive part when removing the peeling paper.

- g. Engage the 2 claws and install the molding with the screw.

NOTE: **Do not apply excessive force onto the molding, but apply steady pressure with your thumbs.**

BACK DOOR GARNISH

COMPONENTS



[N*m (kg*cm, ft.*lbf)]: Specified torque

P

0112000E01

Fig. 49: Identifying Back Door Garnish Replacement Components With Torque Specification
Courtesy of TOYOTA MOTOR SALES, U.S.A., INC.

REMOVAL

1. REMOVE BACK DOOR TRIM PANEL ASSEMBLY UPPER (See DISASSEMBLY)
2. REMOVE BACK DOOR GARNISH
 - a. Disengage the back door opener switch connector.

- b. Remove the 5 bolts, clip and garnish.

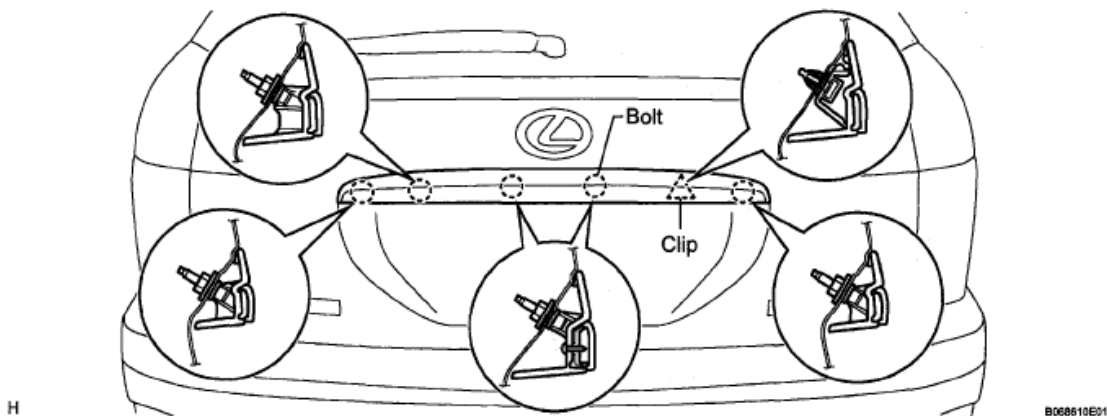


Fig. 50: Identifying Back Door Garnish Bolts & Clip
Courtesy of TOYOTA MOTOR SALES, U.S.A., INC.

3. REMOVE BACK DOOR OPENER SWITCH ASSEMBLY

- a. Remove the 2 screws and back door opener switch assembly.

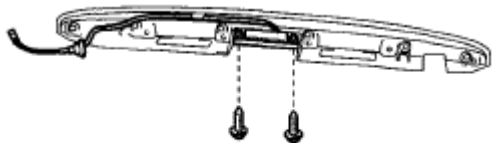


Fig. 51: Identifying Screws And Back Door Opener Switch Assembly

INSTALLATION

- 1. **INSTALL BACK DOOR OPENER SWITCH ASSEMBLY**
- 2. **INSTALL BACK DOOR GARNISH**
 - a. Install the 5 bolts, clip and garnish.

Torque: 9.8 N*m (99 kgf*cm, 87 in.*lbf)

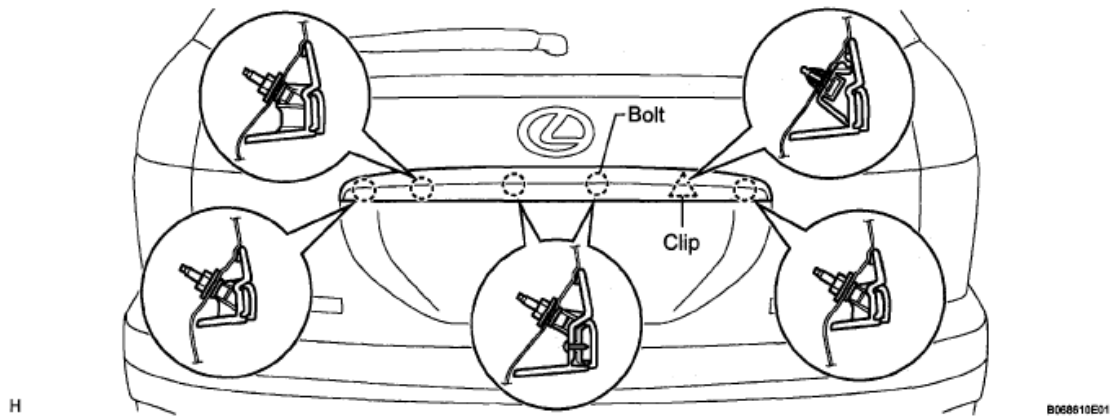


Fig. 52: Identifying Back Door Garnish Bolts & Clip
Courtesy of TOYOTA MOTOR SALES, U.S.A., INC.

b. Connect the back door opener switch connector.

3. INSTALL BACK DOOR TRIM PANEL ASSEMBLY UPPER