

INSTALLATION INSTRUCTIONS

LuxLink® SC430 Remote Control System

TOOLS NEEDED

Masking Tape	Razor Blade	Wire Grabbing Tool	Dull Flat Screwdriver
Phillips Screwdriver	Test Light	Wire Crimper	Door Panel Tool
Double Sided Tape	Electrical Tape	10MM Socket	Soldering Iron & Solder
Optional: Cordless Drill with 10mm & Phillip Attachment			

NOTE: BEFORE BEGINNING INSTALLATION, MAKE SURE TOP IS OPEN & WINDOWS ARE DOWN.

SCUFF PLATE

REMOVING SCUFF PLATE

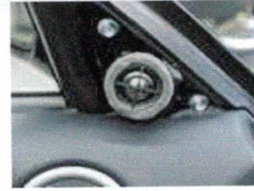
- a. Remove drivers scuff plate by gently Pulling up and unplugging connector.



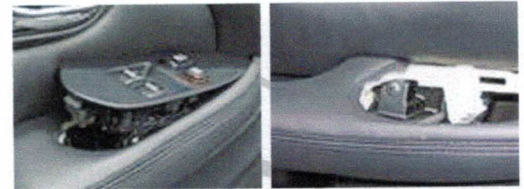
DRIVERS DOOR PANEL

REMOVING DRIVERS DOOR PANEL

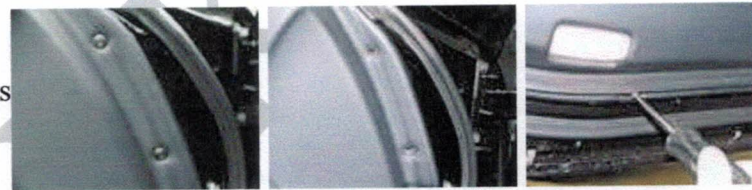
- a. Remove drivers door tweeter. (Pops off)



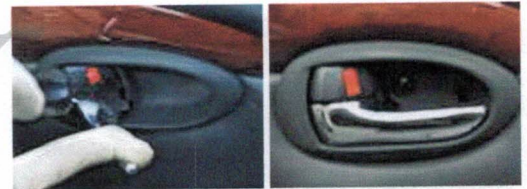
- b. Remove power window master switch. (note) use extreme care when removing switch. Door panel leather tares easily. Using a dull flat head screwdriver or putty knife, lift back side of switch enough to use another small screwdriver to push on clip on back side of switch. Lift switch up and out and unplug connector. Remove screw behind master window switch.



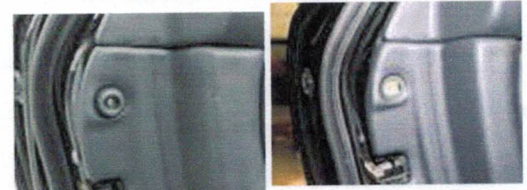
- c. Remove the eight screws and two plastic plugs (push in center of plug and pop out).



- d. Remove door handle cover and screw. (Gently pry cover off to access screw)



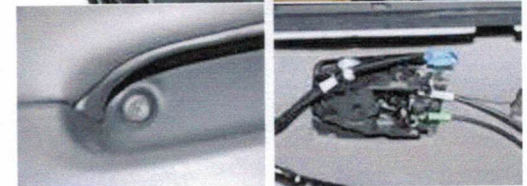
- e. Remove screw for door cushion stop on outer side of door panel.



- f. Remove screw for door courtesy switch bezel.



- g. Remove screw under drivers arm rest and remove door handle cables.



- h. Pull out on bottom of door panel and push up to remove. Disconnect remaining connectors and set door panel off to the side for future installation.

LOWER KICK PANEL

REMOVING LOWER KICK PANEL

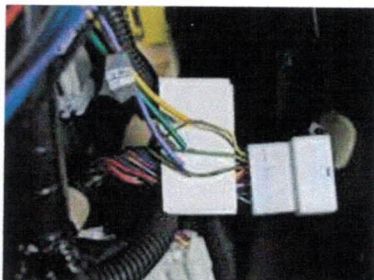
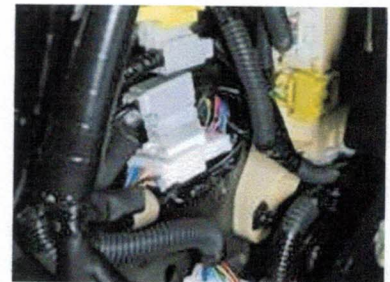
- a. Remove all three 10mm bolts holding kick panel on. Disconnect 3 connectors, Hood Cable, Hose and courtesy light.
- b. Remove lower kick panel.



Drivers floor carpet L/H kick panel

REMOVING DRIVERS FLOOR CARPET L/H KICK PANEL

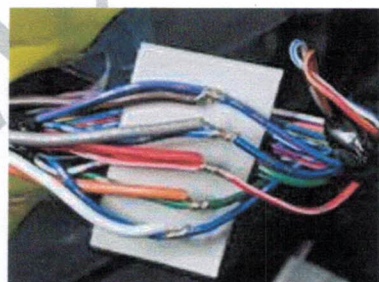
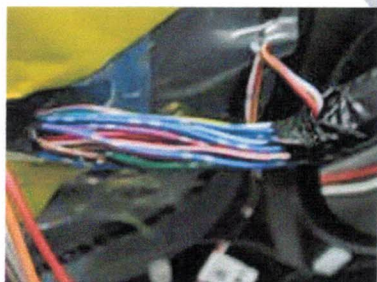
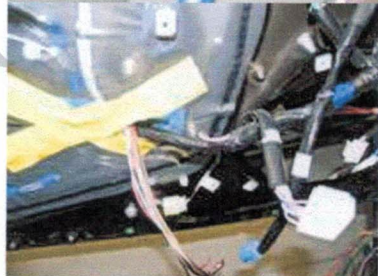
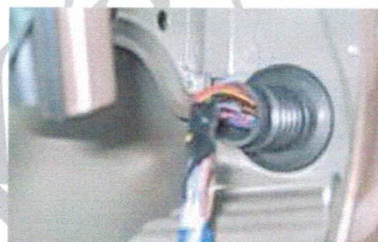
- a. Pull drivers floor carpet back towards brake pedal and gas pedal to allow for as much room as possible to access L/H junction block.
- b. Locate larger IC1 24 pin connector behind L/H carpet kick panel to access convertible top wires.
- c. Remove harness protective cover to access wires.
- d. Connect J1.3 Yellow wire from LuxLink to IC1.2 Yellow and Black wire to vehicle, J1.9 Green wire from LuxLink to IC1.3 Green with Yellow wire to vehicle, J1.6 Violet wire from LuxLink to IC1.15 Black with Yellow wire.
- e. Solder all three wires and shield with electrical tape. Reinstall harness protector.



LUXLINK WIRES TO DOOR COMPUTER

INSTALLING WIRES FROM LUXLINK TO DOOR COMPUTER

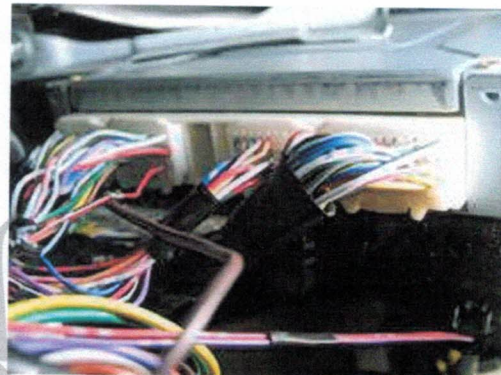
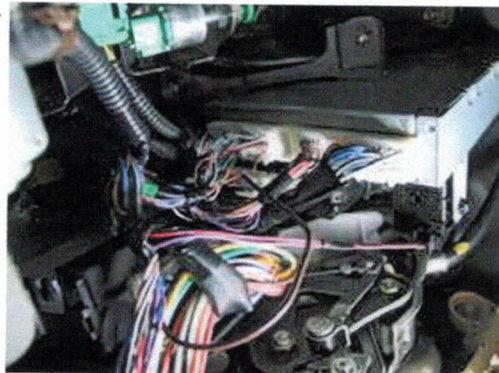
- a. Remove door speaker to access rubber door boot.
- b. Pull back a portion of the clear door plastic behind door panel..
- c. Locate J1.1 Red / White, J1.5 Brown, J1.7 Orange, J1.10 Grey, and J1.16 White wires on Lux Link. Route wires to L/H rubber boot going into drivers door.
- d. Make sure wires do not interfere with window glass moving up and down.
- e. Pull wires through wire harness area near center of door.
- f. Remove electrical tape around large group of wires. Locate proper wires and connect (See Photos)
- g. Strip $\frac{1}{4}$ " of insulation from all five wires.
- h. Attach brown wire from Lux Link to blue with red stripe power door lock wire. (Power when locking door)
- i. Attach grey wire from LuxLink to blue with Black power door unlock wire. (Power when unlocking door)
- j. Attach Red with White stripe wire from Lux Link to red with white stripe door courtesy switch. (Ground with drivers door open)
- k. Attach Orange wire from LuxLink to Green power window down wire. (Power with drivers window down)
- l. Attach White wire from LuxLink to Blue power window up wire.(Power with drivers window up)
- m. Solder all five wires and install electrical tape on all five wires **individually**.
- n. Reinstall speaker and door panel.



PARKING BRAKE WIRE

INSTALLING PARKING BRAKE WIRE

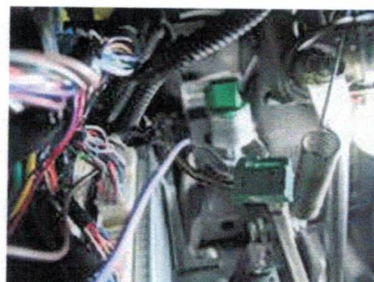
- a. Locate skid control ECU under drivers side kick panel next to brake pedal assembly. Locate connector B pin 8 Red with Black wire. Connect J1.2 Brown wire from LuxLink to Red with Black wire. Solder and tape.



BRAKE LIGHT SWITCH WIRE

REMOVING BRAKE LIGHT SWITCH CONNECTOR

- a. Locate brake light switch under drivers side dash.
- b. Locate green with white stripe wire pin 1.
- c. Connect J1.15 Violet with white wire from Lux Link to Green with white wire pin 1.
- d. Remove ¼" insulation from green with white stripe wire from brake light switch and connect Violet with White wire.
- e. Solder wires and install electrical tape.



ENGINE HOOD COURTESY SWITCH WIRE

LOCATE AND INSTALL HOOD PIN WIRE FROM LUXLINK

- a. Locate Drivers side junction block ECU.
- b. Connect J1.4 Blue wire from LuxLink to Connector A pin 16 Red wire behind Drivers side junction block.

Note: This is not an easy task. The connector is behind the junction block and is difficult to see and get to.



GROUND INSTALLATION

LOCATE AND INSTALL GROUND FROM LUXLINK

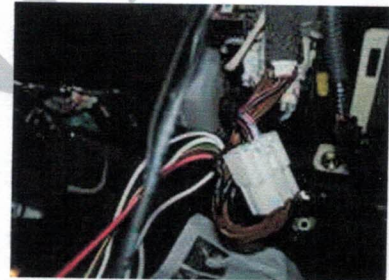
- c. Locate black wire from LuxLink and attach to ground.
- d. Install ground on known good chassis ground.
- e. Failure to provide a good ground could result in abnormal operation from LuxLink.



INSTALLING LUX LINK TO IGNITION CONNECTOR

LOCATE IGNITION SWITCH CONNECTOR (located under driver's side dash)

- a. Disconnect 8 pin white ignition switch connector.
- b. Connect LuxLink "T" connector harness between male and female ignition connectors.



MOUNTING LUX LINK

LOCATE & MOUNT LUXLINK IN A SUITABLE SPACE

- f. Mount LuxLink and wires in an inconspicuous place where it will not interfere with any moving parts. (Double sided tape recommended)



IMMOBILISER INSTALLATION

NOTE:

Before trying to remotely start vehicle the by pass transponder kit needs to be installed in vehicle.
 The black key sense wire on bypass kit gets connected to J1.8 Blue with white wire from LuxLink.
 See installation instructions in TBK111 By pass kit. (Yellow wire is not used)

WIRING SHEMATIC

Red with white stripe wire	J1.1	Connects to driver's door courtesy switch. (Continuity to ground with drivers door open)
Brown wire	J1.2	Connects to vehicle emergency brake (Continuity to ground with emergency brake on) <i>(Does not have to be installed, used for turbo timer only)</i>
Yellow wire	J1.3	Connects to convertible top close wire.
Blue wire	J1.4	Connects to hood courtesy switch. (Continuity to ground with hood open) <i>(Must be installed for remote starter to work)</i>
Brown wire	J1.5	Connects to driver's door lock wire. (Battery voltage when locking drivers door)
Violet wire	J1.6	Connects to convertible top L/H limit switch.
Orange wire	J1.7	Connect to driver's power window down wire. (Battery voltage when rolling drivers window down)
Blue with white stripe wire	J1.8	Connect to engine immobilizer switch wire. (Connect to black wire on immobilizer by pass box) <i>(Only used on remote starters)</i>
Green wire	J1.9	Connect to Convertible top open wire.
Grey wire	J1.10	Connect to drivers door unlock wire. (Battery voltage when unlocking drivers door)
Yellow with white stripe wire	J1.11	Connects to parking light wire (+,-)
Orange with white stripe wire	J1.12	Connects to parking light source (+,-) <i>(Does not have to be installed)</i>
Grey with white stripe wire	J1.13	Connects to rear window control module yellow wire. <i>(See smart window module WR-24 instruciones) (Optional)</i>
Black with white stripe wire	J1.14	Connects to rear window control module yellow/white wire. <i>(See smart window module WR-24 instruciones) (Optional)</i>
Violet with white stripe wire	J1.15	Connects to vehicle brake light switch. (Battery voltage with brake on)
White wire	J1.16	Connect to driver's power window up wire. (Battery voltage when rolling drivers window up)